



## MECHANICAL RENOVATION NOTES:

THESE NOTES APPLY TO ALL MECHANICAL SHEETS AND TRAVERS, INCLUDING BUT NOT LIMITED TO VENTILATION, PIPING.

1. EXISTING CONDITIONS ARE SHOWN BASED ON INFORMATION OBTAINED FROM FIELD SURVEYS, EXISTING BUILDING DOCUMENTS, AND STAFF. VERIFY EXISTING CONDITIONS AND REPORT ANY CONFLICTS BEFORE PROCEEDING.
2. NOT ALL EXISTING DUCTWORK AND PIPING IS SHOWN. VERIFY EXISTING CONDITIONS AND REPORT ANY CONFLICTS WITH PIPING OR DUCTWORK BEFORE PROCEEDING.
3. FIELD VERIFY THE AVAILABLE CLEARANCES FOR DUCTWORK AND PIPING BEFORE FABRICATION. RISERS AND DROPS MAY BE NECESSARY BECAUSE OF EXISTING FIELD CONDITIONS.
4. EACH CONTRACTOR SHALL FIELD VERIFY ACCESSIBILITY TO THE AREA OF THEIR WORK AND REPORT ANY CONFLICTS TO THE PROJECT MANAGER. FIELD VERIFY ACCESSIBILITY TO THE AREA REQUIRED TO BE REMOVED OR RELOCATED TO ALLOW ACCESS TO THEIR AREA OF WORK, WHERE EXISTING MECHANICAL SYSTEMS ARE LOCATED IN AREAS THAT CONFLICT WITH THE NEW PIPING, PIPING, OR DUCTWORK. FIELD VERIFY ACCESSIBILITY TO THE AREA WHERE EITHER ARRANGE NEW EQUIPMENT, PIPING, OR DUCTWORK IN SUCH A FASHION THAT IT DOES NOT CONFLICT WITH EXISTING SYSTEMS, OR REWORK EXISTING MECHANICAL SYSTEMS TO ALLOW FOR INSTALLATION OF NEW EQUIPMENT, PIPING, OR DUCTWORK.
5. PROVIDE TEMPORARY CONNECTIONS TO MAINTAIN EXISTING SYSTEMS IN SERVICE DURING CONSTRUCTION. MAINTAIN ACCESS TO EXISTING MECHANICAL INSTALLATIONS THAT REMAIN IN PLACE.
6. OBTAIN PERMISSION FROM OWNER BEFORE SHUTTING DOWN ANY SYSTEM FOR ANY REASON. MAINTAIN SERVICE TO ALL COMPONENTS THAT ARE TO REMAIN UNTIL NEW EQUIPMENT IS INSTALLED.
7. MAINTAIN EXISTING SYSTEM IN SERVICE UNTIL NEW SYSTEM IS COMPLETE AND READY FOR TESTING AND COMMISSIONING. FIELD VERIFY ACCESSIBILITY TO THE AREA WHERE NEW CONNECTIONS. OBTAIN PERMISSION FROM OWNER BEFORE PARTIALLY OR COMPLETELY DRAINING SYSTEM. MAKE CHANGEOVER TO NEW SYSTEMS WITH MINIMUM OUTAGE.
8. FIELD VERIFY ACCESSIBILITY TO THE AREA WHERE NEW MECHANICAL DEVICES AND EQUIPMENT SERVING EQUIPMENT HAS BEEN REMOVED.

## MECHANICAL GENERAL NOTES:

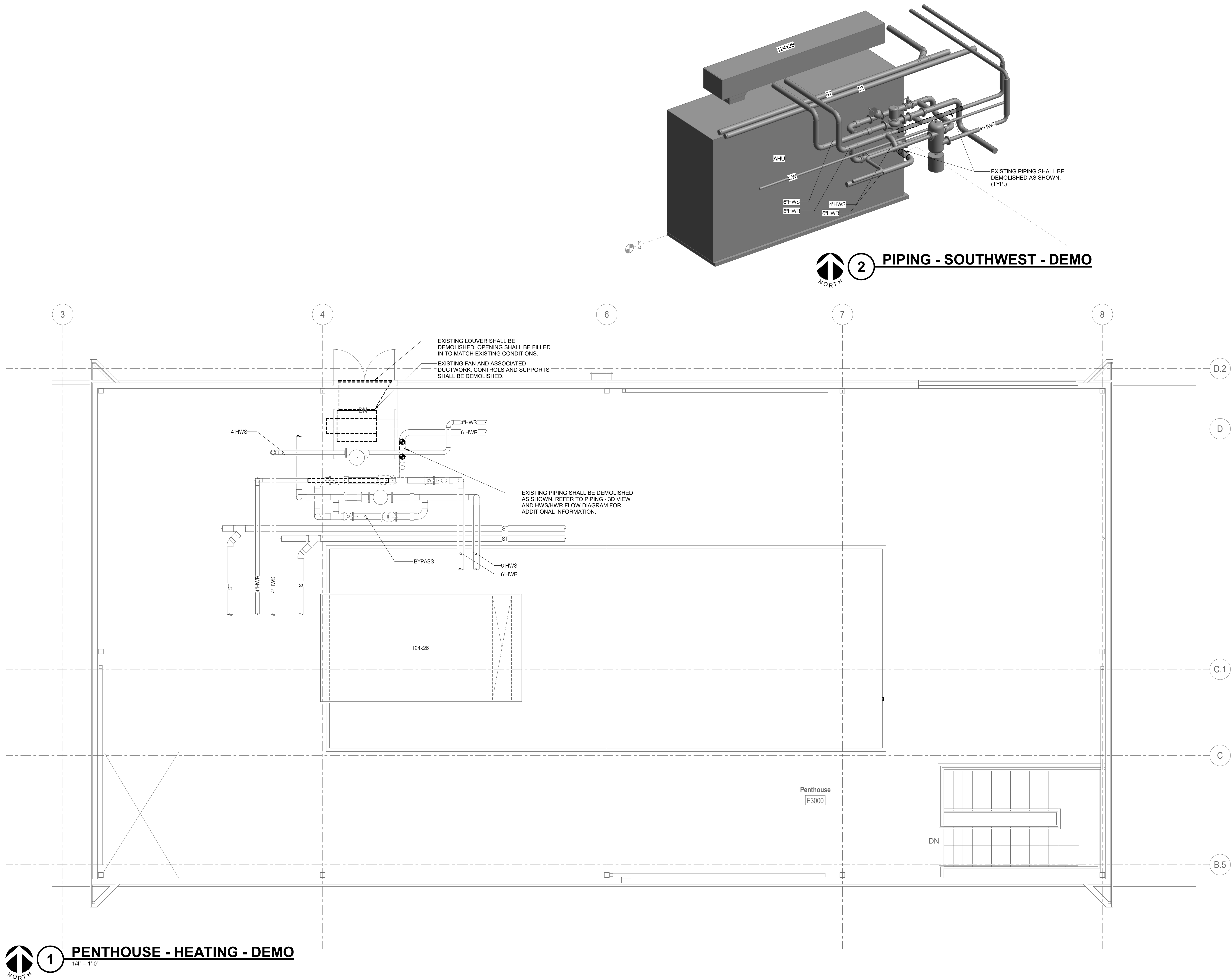
THESE NOTES APPLY TO ALL MECHANICAL SHEETS AND TRADES, INCLUDING BUT NOT LIMITED TO VENTILATION, PIPING.

1. DRAWINGS SHOWING LOCATIONS OF EQUIPMENT, DUCTWORK, PIPING, ETC., ARE DIAGRAMMATIC AND MAY NOT ALWAYS REFLECT EXACT INSTALLATION CONDITIONS. DRAWINGS SHOW THE GENERAL ARRANGEMENT OF DUCTWORK, PIPING, EQUIPMENT, ETC., BUT DO NOT INCLUDE ALL DETAILS AND DIMENSIONS. CONTRACTOR SHALL VERIFY ALL INSTALLATIONS. THE DRAWINGS SHALL BE FOLLOWED AS CLOSELY AS POSSIBLE FOR BUILDING CONSTRUCTION AND THE WORK OF OTHERS WILL PERMIT.
2. IN THE EVENT OF ANY QUANTITY DISCREPANCIES, THE CONTRACTOR SHALL BE REQUIRED TO BE MADE BY THE CONTRACTOR FROM THE DOCUMENTS, WHERE MATERIAL AND/OR QUANTITY DISCREPANCIES ARISE BETWEEN DRAWINGS, SCHEDULES AND/OR SPECIFICATIONS, THE CONTRACTOR SHALL BE REQUIRED TO OBTAIN APPROVAL FROM THE ARCHITECT.
3. DO NOT SCALE DRAWINGS. VERIFY ALL DIMENSIONS AND CLEARANCES FROM ARCHITECTURAL, STRUCTURAL, SUBMITTALS, AND OTHER APPROPRIATE DRAWINGS OR SPECIFICATIONS. VERIFY ALL SIZES, WEIGHTS, AND MATERIALS.
4. COORDINATE ALL WORK WITH ALL OTHER TRADES PRIOR TO INSTALLATION TO PROVIDE CLEARANCES REQUIRED FOR OPERATION, MAINTENANCE, CODE COMPLIANCE, AND TO AVOID INTERFERENCE. THE CONTRACTOR SHALL BE RESPONSIBLE FOR OBTAINING VERIFICATION OF NECESSARY CLEARANCES FOR ALL TRADES. BRING ANY INTERFERENCES TO THE ATTENTION OF THE ARCHITECT/ENGINEER BEFORE PROCEEDING WITH FABRICATION OR FIELD ERECTION.
5. REVIEW SPACE REQUIREMENTS OF EQUIPMENT SPECIFIED OR SUBSTITUTED AND MAKE NECESSARY ACCOMMODATIONS IN LAYOUT AND POSITIONING TO PROVIDE PROPER ACCESS.
6. ANY CHANGES REQUIRED TO ELIMINATE CONFLICTS OR THAT RESULT FROM A FAILURE TO COORDINATE SHALL BE MADE BY THE CONTRACTOR WITHOUT ADDITIONAL COST OR EXPENSE TO OTHERS.
7. EACH CONTRACTOR IS RESPONSIBLE FOR ALL COSTS ASSOCIATED WITH ELECTRICAL CHANGES REQUIRED FOR EQUIPMENT PLACEMENT THAT DIFFERS FROM THE BASIS OF DESIGN.
8. EACH CONTRACTOR IS RESPONSIBLE FOR DAMAGE CAUSED BY THEIR ACTIONS TO WALLS, CEILING, FLOORS, AND ROOF. THE CONTRACTOR WHOSE WORK CAUSED DAMAGE IS RESPONSIBLE FOR PATCHING TO MATCH ORIGINAL CONSTRUCTION, FIRE RATING, AND FINISH.
9. EQUIPMENT SIZES AND SERVICE CLEARANCE REQUIREMENTS VARY AMONG DIFFERENT MANUFACTURERS. CONSULT APPROVED SHOP DRAWINGS FOR EQUIPMENT SIZES AND SERVICE CLEARANCES. COORDINATE WITH LAYOUT OF EQUIPMENT, PIPING, DUCTWORK, ETC.
10. DO NOT BLOCK TUBE PULP OR EQUIPMENT SERVICE CLEARANCES.
11. MAINTAIN MINIMUM WORKING CLEARANCE OF 36" FROM ALL ELECTRICAL EQUIPMENT REQUIRING MAINTENANCE, INSPECTION, AND TESTING INCLUDING BUT NOT LIMITED TO PANELS, DISTRIBUTION PANELS, SWITCHBOARDS, MOTOR CONTROL CENTERS, AND TRANSFORMERS.
12. MAINTAIN THE DEDICATED ELECTRICAL EQUIPMENT SPACE DEFINED BY THE WIDTH / DEPTH OF ELECTRICAL EQUIPMENT MEASURED FROM THE FLOOR TO A HEIGHT 6'-0" ABOVE THE EQUIPMENT. THE CLEARANCE FROM THE HANGER AND 18" FROM THE EQUIPMENT FOREIGN TO THE ELECTRICAL DISTRIBUTION SYSTEM ARE NOT ALLOWED IN THE DEDICATED ELECTRICAL SPACE INCLUDING DUCTWORK, PIPING, ETC.
13. MAINTAIN THE DEDICATED ELECTRICAL EQUIPMENT SPACE INCLUDING 2'-0" ON CENTER WHEN ATTACHING TO METAL HOOK BECKING. LIMITATION NOT REQUIRED WITH CONCRETE ON WALLS AND THIS LIMITATION DOES NOT APPLY TO CONCRETE WALLS AND ARCHITECTURAL ITEMS HANGING FROM DECK. IF THE HANGER RESTRICTIONS CANNOT BE ACHIEVED, SUPPLEMENTAL FRAMING OF STEEL FRAMING SHALL BE ADDED. ANCHORS EMBEDDED IN CONCRETE SHALL BE CRACKED CONCRETE APPROVED IN ACCORDANCE WITH SPECIFICATIONS.

MECHANICAL SHEET INDEX	
A.2-000	MECHANICAL COVERSHEET
A.2-100	PENTHOUSE – MECHANICAL – DEMO
A.2-100	PENTHOUSE – VENTILATION
GRAND TOTAL: 3	

MECHANICAL SHEET INDEX	
A.2-000	MECHANICAL COVERSHEET
A.2-100	PENTHOUSE – MECHANICAL – DEMO
A.2-100	PENTHOUSE – VENTILATION
GRAND TOTAL: 3	

MECHANICAL SHEET INDEX	
A.2-000	MECHANICAL COVERSHEET
A.2-100	PENTHOUSE – MECHANICAL – DEMO
A.2-100	PENTHOUSE – VENTILATION
GRAND TOTAL: 3	



Piping Upgrades

1215 Houbolt Road  
Joliet, IL 60431

Joilet Junior College

**IMEG**  
The FUTURE. Built Smarter. [www.imegcorp.com](http://www.imegcorp.com)  
263 SHUMAN BOULEVARD  
SUITE 550  
NAPERVILLE, IL 60563  
P: 630.527.2320

PROFESSIONAL SEAL

KEY PLAN

AGENCY APPROVAL

**PRELIMINARY  
NOT FOR  
CONSTRUCTION**

DISCLAIMER

IMEG RESERVES PROPRIETARY RIGHTS, INCLUDING COPYRIGHTS, TO THIS DRAWING AND THE DATA SHOWN THEREON. SAID DRAWING AND/OR DATA ARE THE EXCLUSIVE PROPERTY OF IMEG AND SHALL NOT BE USED OR REPRODUCED FOR ANY OTHER PROJECT WITHOUT THE EXPRESS WRITTEN APPROVAL AND PARTICIPATION OF IMEG.  
©2025 IMEG CONSULTANTS CORP.

Imec Design Firm Registration #10600976-0014

REF. SCALE IN INCHES PROJECT #25003009.00

REVISIONS

No.	Date	Revision / Issue
-----	------	------------------

SHEET INFORMATION

Issue	<b>BID SET</b>
Date	<b>08/01/2025</b>
Project #	<b>25003009.00</b>
Drawn	<b>DVE</b>
Checked	<b>BLH</b>
Approved	<b>BLH</b>

SHEET TITLE

**PENTHOUSE - MECHANICAL - DEMO**

SCALE

Scale: **1/4" = 1'-0"**

SHEET NUMBER

**MD.2-100**

Piping Upgrades

1215 Houbolt Road  
Joliet, IL 60431

Joliet Junior College



PROFESSIONAL SEAL

KEY PLAN

AGENCY APPROVAL

PRELIMINARY  
NOT FOR  
CONSTRUCTION

DISCLAIMER

IMEG RESERVES PROPRIETARY RIGHTS, INCLUDING COPYRIGHTS, TO THIS DRAWING AND THE DATA SHOWN THEREON. SAID DRAWING AND/OR DATA ARE THE EXCLUSIVE PROPERTY OF IMEG AND SHALL NOT BE USED OR REPRODUCED FOR ANY OTHER PROJECT WITHOUT THE EXPRESS WRITTEN APPROVAL AND PARTICIPATION OF IMEG.  
©2025 IMEG CONSULTANTS CORP.

IMEG Design Firm Registration #18400976-0014

REF. SCALE IN INCHES PROJECT #25003009.00

REVISIONS

No. Date Revision / Issue

SHEET INFORMATION

Issue BID SET

Date 08/01/2025

Project # 25003009.00

Drawn DVE

Checked BLH

Approved BLH

SHEET TITLE

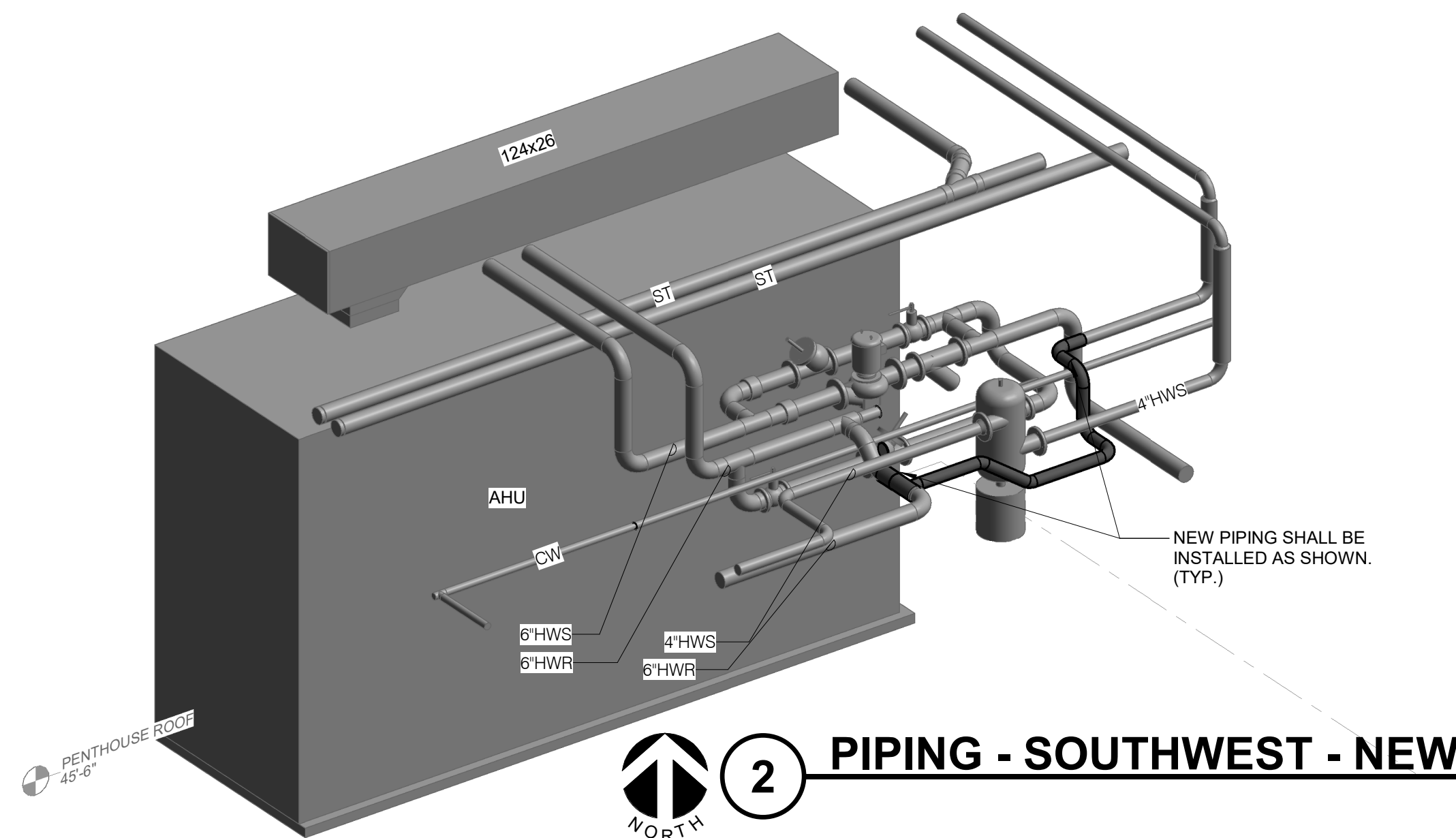
PENTHOUSE – VENTILATION

SCALE

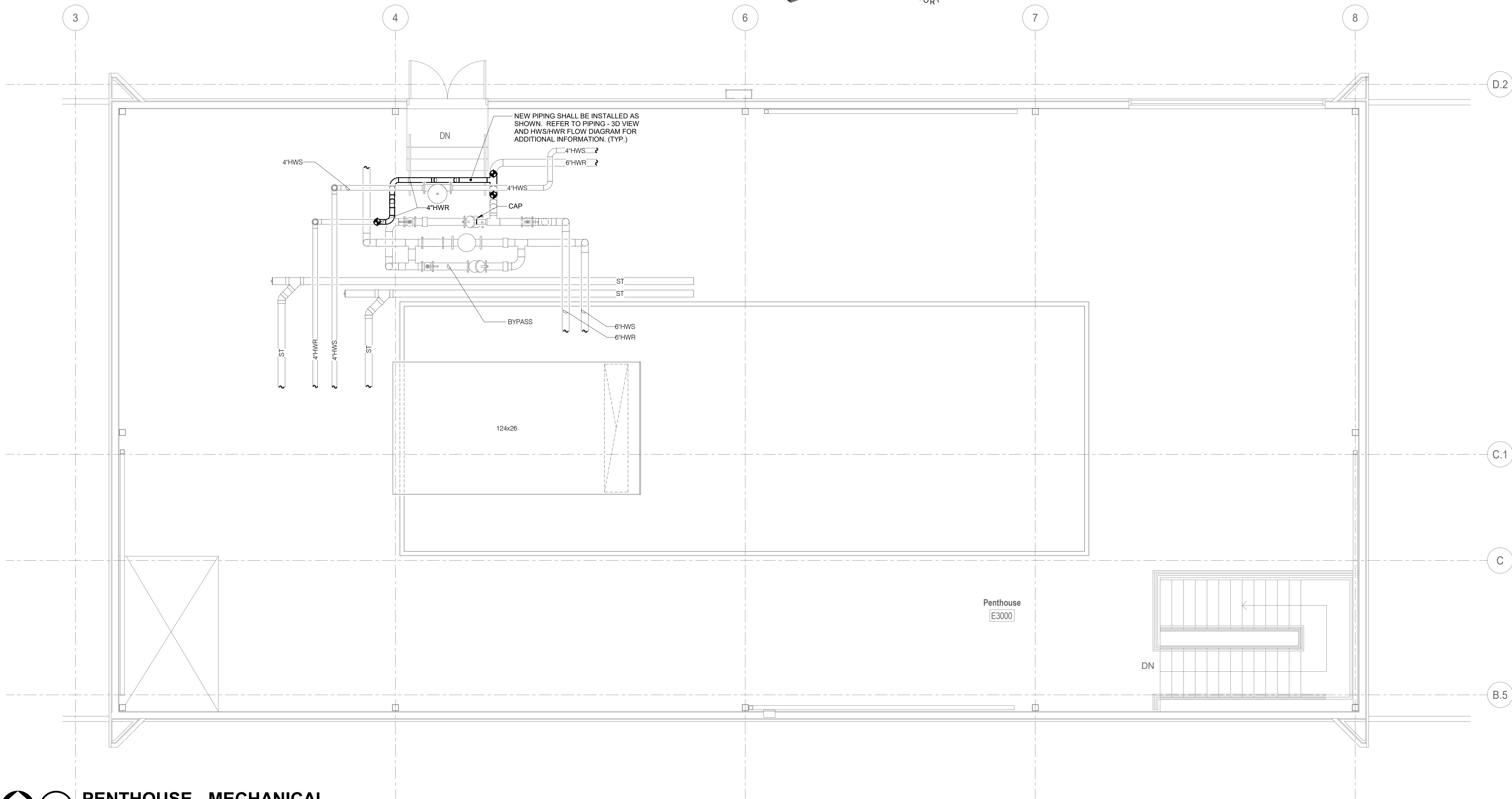
Scale: 1/4" = 1'-0"

SHEET NUMBER

M.2-100



2 PIPING - SOUTHWEST - NEW



1 PENTHOUSE - MECHANICAL  
1/4" = 1'-0"