

**1 UNDERFLOOR SUB-VAULT D DEMOLITION PLAN - PLUMBING**  
 1/4" = 1'-0"

PROFESSIONAL SEAL  
 CONSULTANT  
 KEY PLAN  
 AGENCY APPROVAL

**DISCLAIMER**  
 IMEG CORP. RESERVES PROPRIETARY RIGHTS, INCLUDING COPYRIGHTS, TO THIS DRAWING AND THE DATA SHOWN THEREON. THIS DRAWING AND/OR DATA ARE THE EXCLUSIVE PROPERTY OF IMEG CORP. AND SHALL NOT BE USED OR REPRODUCED FOR ANY OTHER PROJECT WITHOUT THE EXPRESS WRITTEN APPROVAL AND PARTICIPATION OF IMEG CORP. ©2023 IMEG CORP.  
 Illinois Design Firm Registration #184-07021-0014  
 REF. SCALE IN INCHES PROJECT #23001895.00

| No. | Date | Revision / Issue |
|-----|------|------------------|
|     |      |                  |

**SHEET INFORMATION**

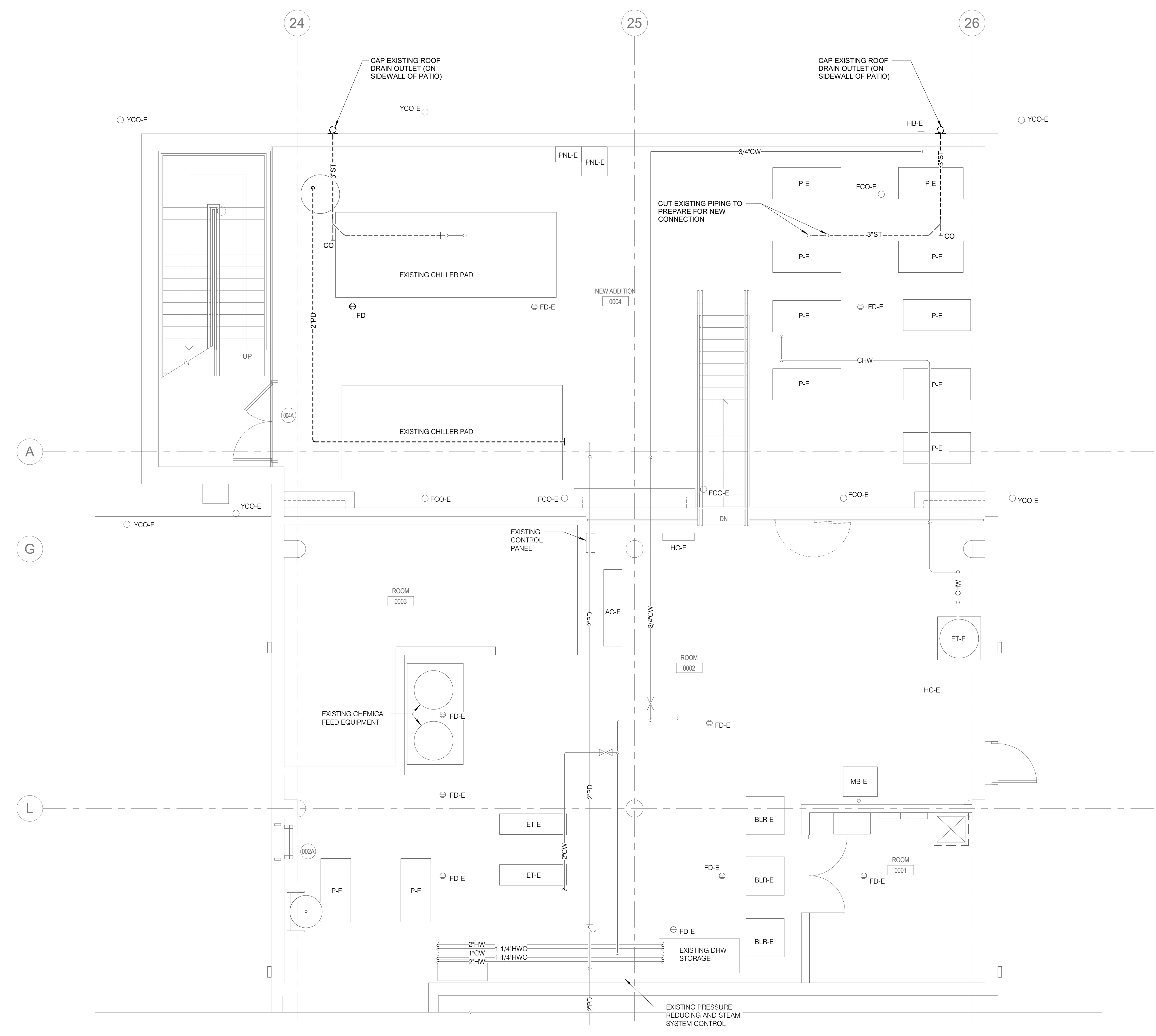
|           |                                    |
|-----------|------------------------------------|
| Issue     | <b>ISSUED FOR BID/CONSTRUCTION</b> |
| Date      | 5/19/2023                          |
| Project # | 23001895.00                        |
| Drawn     | MB                                 |
| Checked   | JO                                 |
| Approved  | JO                                 |

**SHEET TITLE**  
 UNDERFLOOR SUB-VAULT D  
 DEMOLITION PLAN - PLUMBING

SCALE  
 1/4" = 1'-0"

SHEET NUMBER

**PD100**



**1 SUB-VAULT D DEMOLITION PLAN - PLUMBING**  
 1/4" = 1'-0"

PROFESSIONAL SEAL

CONSULTANT

KEY PLAN

AGENCY APPROVAL

DISCLAIMER

IMEG CORP. RESERVES PROPRIETARY RIGHTS, INCLUDING COPYRIGHTS, TO THIS DRAWING AND THE DATA SHOWN THEREON. SAID DRAWING AND/OR DATA ARE THE EXCLUSIVE PROPERTY OF IMEG CORP. AND SHALL NOT BE USED OR REPRODUCED FOR ANY OTHER PROJECT WITHOUT THE EXPRESS WRITTEN APPROVAL AND PARTICIPATION OF IMEG CORP. ©2023 IMEG CORP.  
 Meck Design Firm Registration #184-00761-0014  
 REF. SCALE IN INCHES PROJECT #23001895.00

| No. | Date | Revision / Issue |
|-----|------|------------------|
|     |      |                  |

SHEET INFORMATION

|           |                             |
|-----------|-----------------------------|
| Issue     | ISSUED FOR BID/CONSTRUCTION |
| Date      | 5/19/2023                   |
| Project # | 23001895.00                 |
| Drawn     | MB                          |
| Checked   | JO                          |
| Approved  | JO                          |

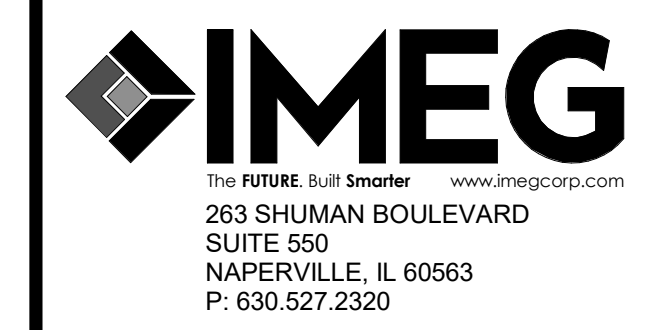
SHEET TITLE  
**SUB-VAULT D DEMOLITION PLAN - PLUMBING**

SCALE  
 1/4" = 1'-0"

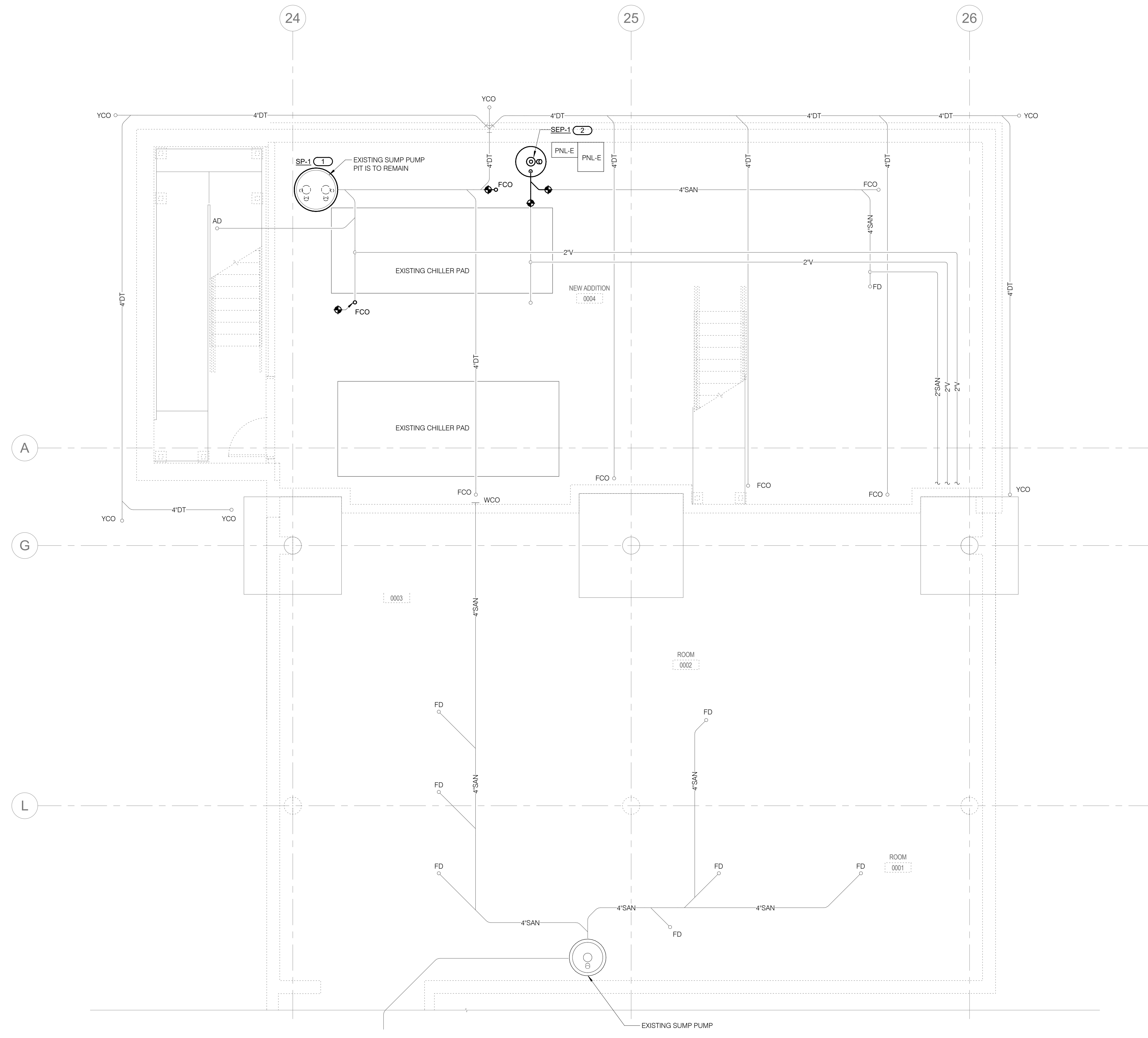
SHEET NUMBER

**PD101**

KEYNOTES: ( # )  
 1. REFER TO DETAIL ON 1/P300 FOR MORE INFORMATION.  
 2. REFER TO DETAIL ON 2/P300 FOR MORE INFORMATION.



**JOLIET JUNIOR COLLEGE**  
**SUB-VAULT D -**  
**PLUMBING REVISIONS**  
 1215 Houbolt Rd  
 Joliet, IL 60431



**1 UNDERFLOOR SUB-VAULT D PLAN - PLUMBING**  
 1/4" = 1'-0"

PROFESSIONAL SEAL  
 CONSULTANT  
 KEY PLAN  
 AGENCY APPROVAL

DISCLAIMER  
 IMEG CORP. RESERVES PROPRIETARY RIGHTS, INCLUDING COPYRIGHTS, TO THIS DRAWING AND THE DATA SHOWN THEREON. SAID DRAWING AND/OR DATA ARE THE EXCLUSIVE PROPERTY OF IMEG CORP. AND SHALL NOT BE USED OR REPRODUCED FOR ANY OTHER PROJECT WITHOUT THE EXPRESS WRITTEN APPROVAL AND PARTICIPATION OF IMEG CORP. ©2023 IMEG CORP.  
 0 1 2 3  
 REF. SCALE IN INCHES PROJECT #23001895.00

| REVISIONS |      |                  |
|-----------|------|------------------|
| No.       | Date | Revision / Issue |
|           |      |                  |
|           |      |                  |

SHEET INFORMATION  
 Issue: **ISSUED FOR BID/CONSTRUCTION**  
 Date: **5/19/2023**  
 Project #: **23001895.00**  
 Drawn: **MB**  
 Checked: **JO**  
 Approved: **JO**

SHEET TITLE  
**UNDERFLOOR SUB-VAULT D PLAN - PLUMBING**

SCALE  
 Scale: **1/4" = 1'-0"**

SHEET NUMBER

**P100**

23001895.00 6/28/2023 2:51:35 PM SUB-VAULT D - PLUMBING REVISIONS

PROFESSIONAL SEAL

CONSULTANT

KEY PLAN

AGENCY APPROVAL

DISCLAIMER

IMEG CORP. RESERVES PROPRIETARY RIGHTS, INCLUDING COPYRIGHTS, TO THIS DRAWING AND THE DATA BROWN THEREON. SAID DRAWING AND/OR DATA ARE THE EXCLUSIVE PROPERTY OF IMEG CORP. AND SHALL NOT BE USED OR REPRODUCED FOR ANY OTHER PROJECT WITHOUT THE EXPRESS WRITTEN APPROVAL AND PARTICIPATION OF IMEG CORP. ©2023 IMEG CORP.  
 IMEG Design Firm Registration #184-00761-0014  
 REF. SCALE IN INCHES PROJECT #23001895.00

| No.       | Date | Revision / Issue |
|-----------|------|------------------|
| REVISIONS |      |                  |

SHEET INFORMATION

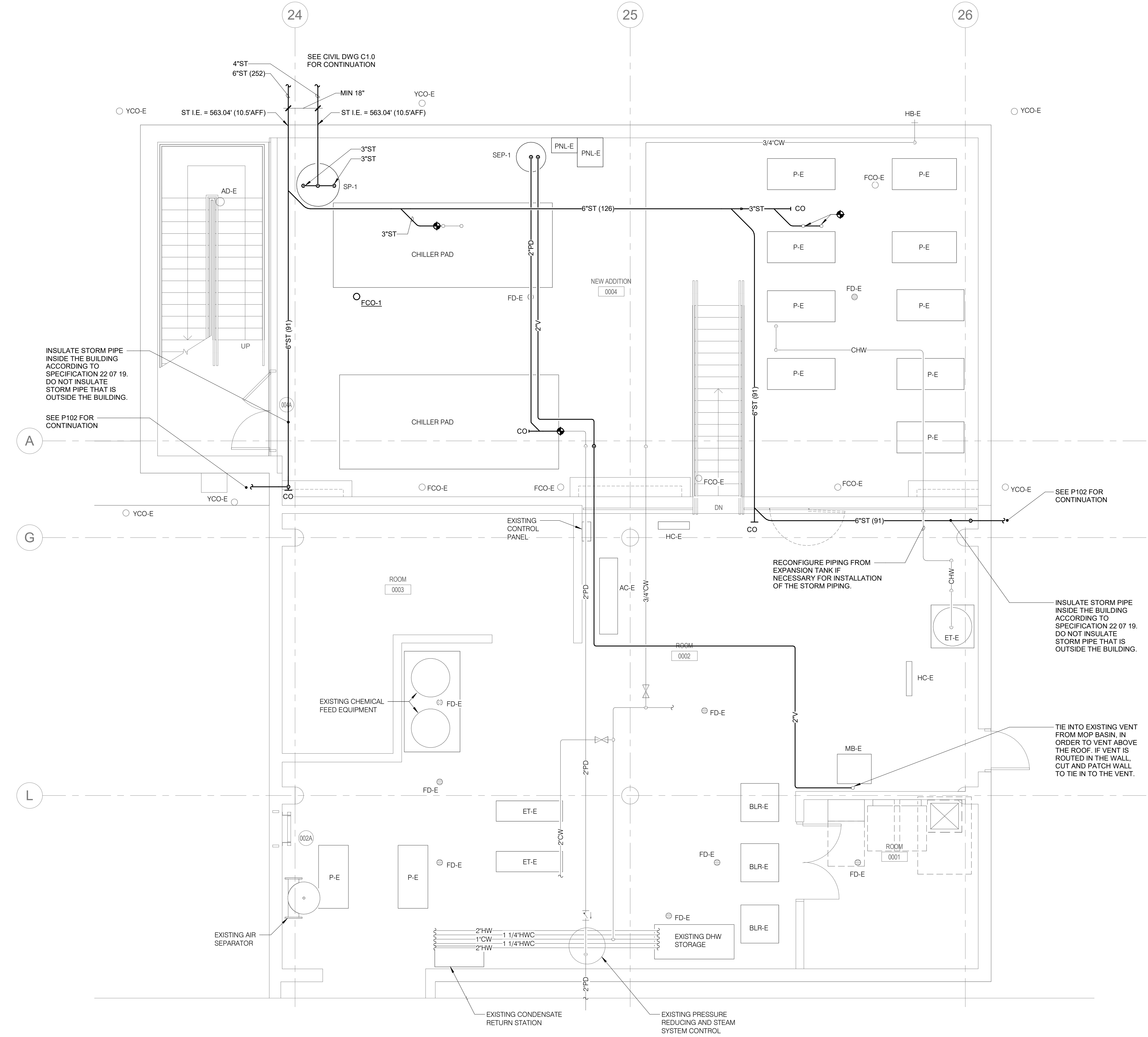
|           |                                    |
|-----------|------------------------------------|
| Issue     | <b>ISSUED FOR BID/CONSTRUCTION</b> |
| Date      | 5/19/2023                          |
| Project # | 23001895.00                        |
| Drawn     | MB                                 |
| Checked   | JO                                 |
| Approved  | JO                                 |

SHEET TITLE  
**SUB-VAULT D PLAN - PLUMBING**

SCALE  
 Scale: 1/4" = 1'-0"

SHEET NUMBER

**P101**



**1 SUB-VAULT D PLAN - PLUMBING**  
 1/4" = 1'-0"

PROFESSIONAL SEAL

CONSULTANT

KEY PLAN

AGENCY APPROVAL

DISCLAIMER

IMEG CORP. RESERVES PROPRIETARY RIGHTS, INCLUDING COPYRIGHTS, TO THIS DRAWING AND THE DATA SHOWN THEREON. SAID DRAWING AND/OR DATA ARE THE EXCLUSIVE PROPERTY OF IMEG CORP. AND SHALL NOT BE USED OR REPRODUCED FOR ANY OTHER PROJECT WITHOUT THE EXPRESS WRITTEN APPROVAL AND PARTICIPATION OF IMEG CORP. ©2023 IMEG CORP.  
 Illinois Design Firm Registration #18A-07021-0014  
 PROJECT #23001895.00

REVISIONS

| No. | Date | Revision / Issue |
|-----|------|------------------|
|     |      |                  |

SHEET INFORMATION

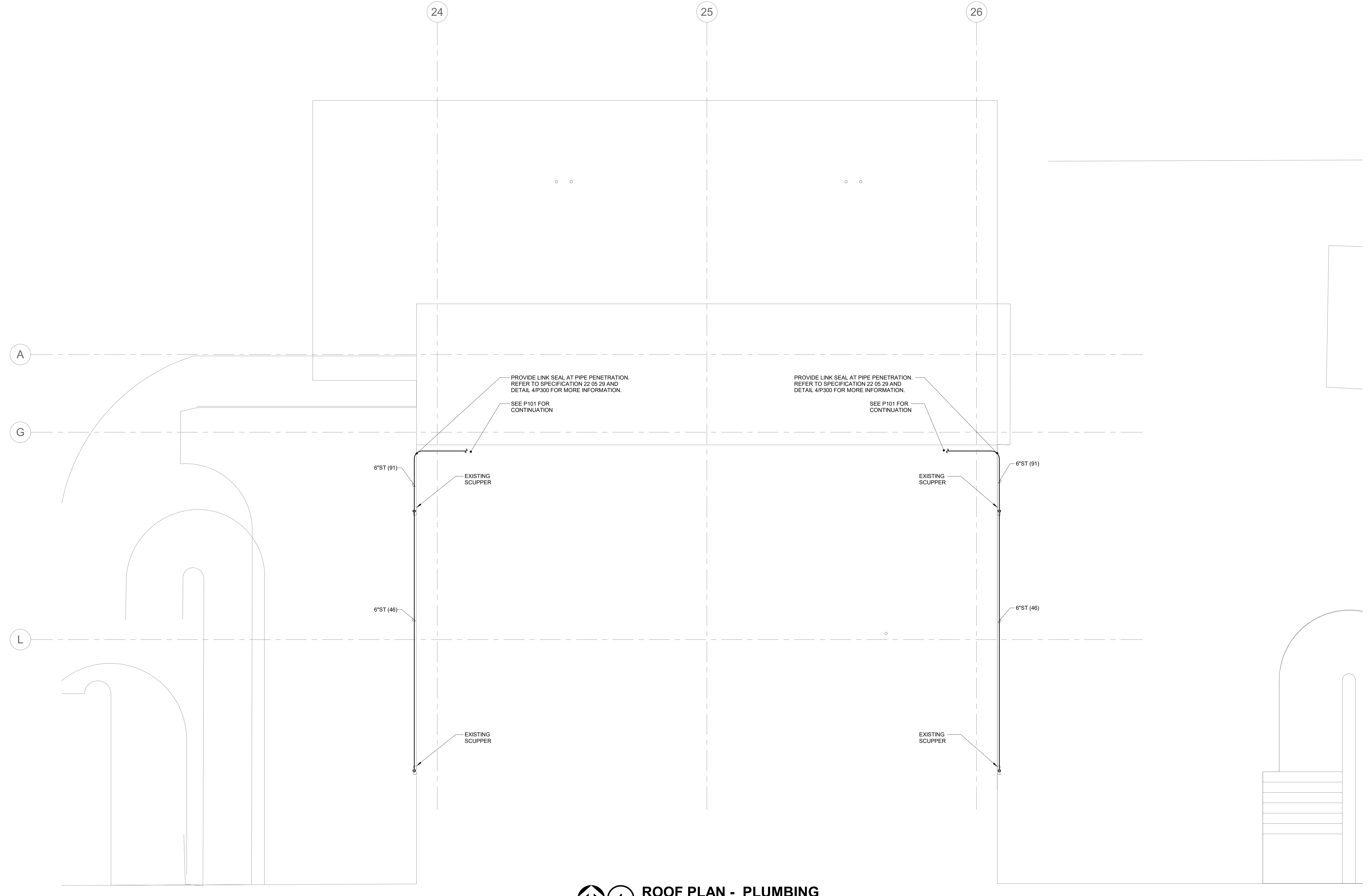
|           |                                    |
|-----------|------------------------------------|
| Issue     | <b>ISSUED FOR BID/CONSTRUCTION</b> |
| Date      | 5/19/2023                          |
| Project # | 23001895.00                        |
| Drawn     | MB                                 |
| Checked   | JO                                 |
| Approved  | JO                                 |

SHEET TITLE  
**ROOF PLAN - PLUMBING**

SCALE  
 Scale: 1/4" = 1'-0"

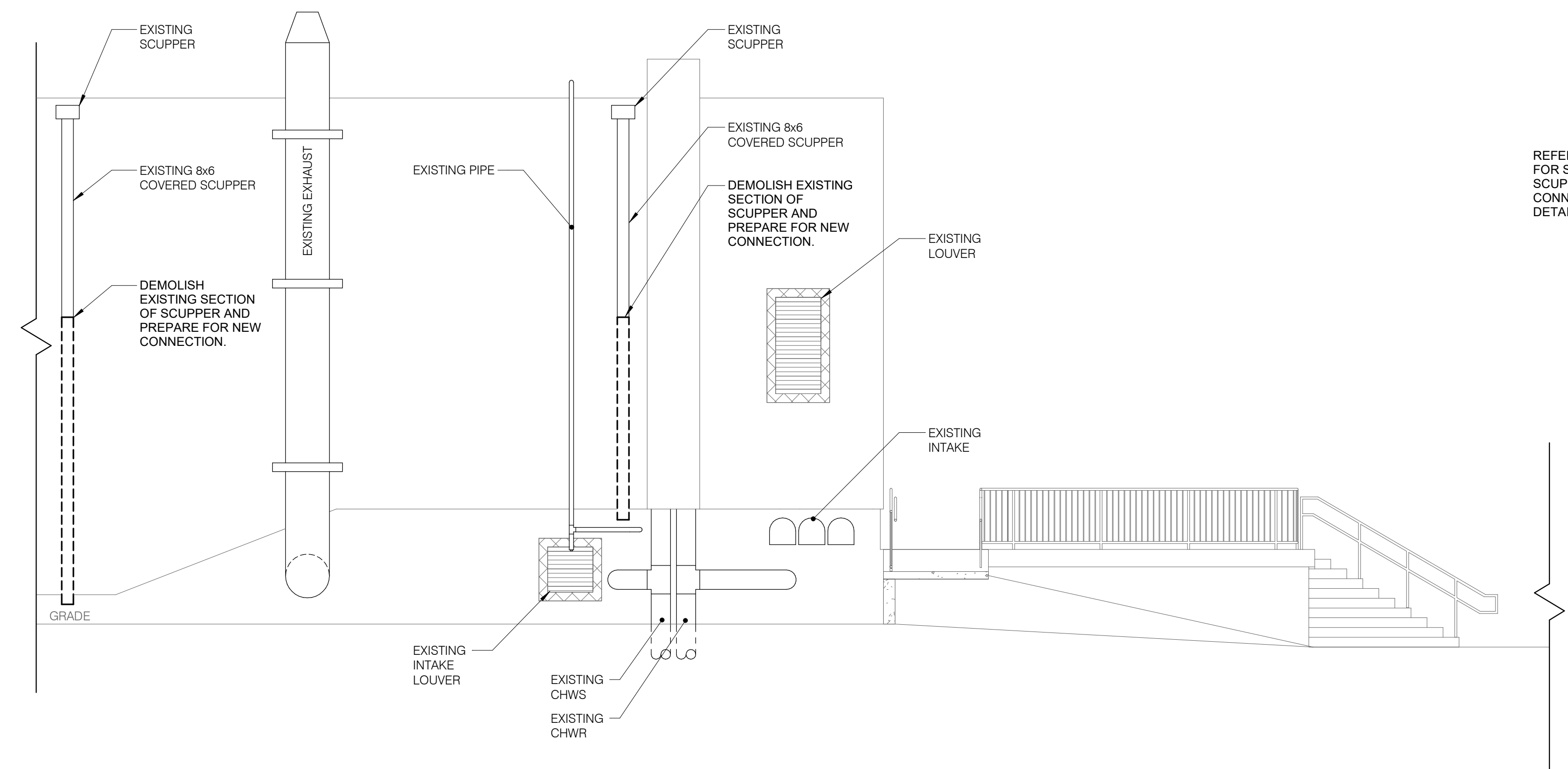
SHEET NUMBER

**P102**

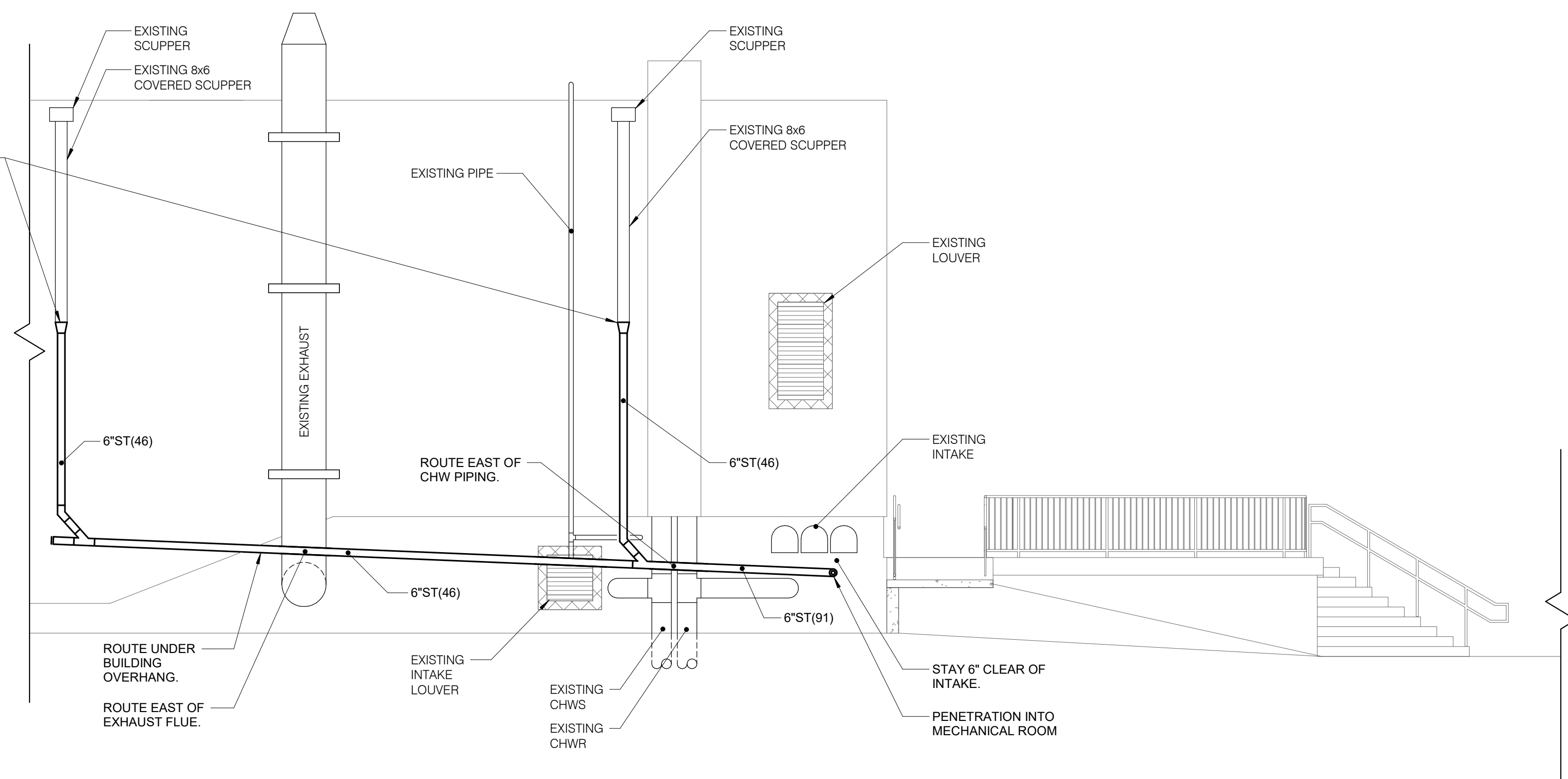


**1** ROOF PLAN - PLUMBING  
 1/4" = 1'-0"

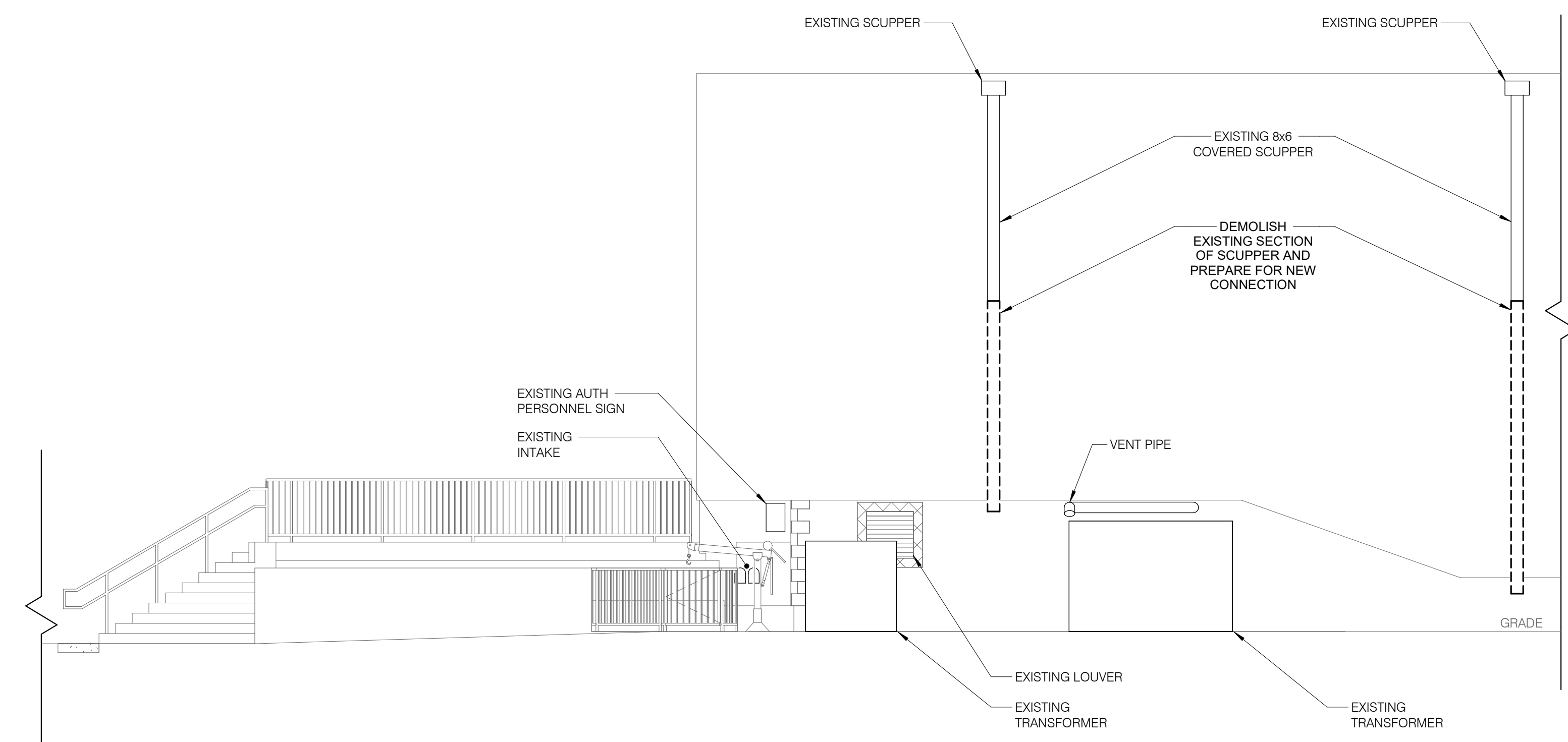
23001895.00 6/28/2023 2:51:37 PM SUB-VAULT D - PLUMBING REVISIONS



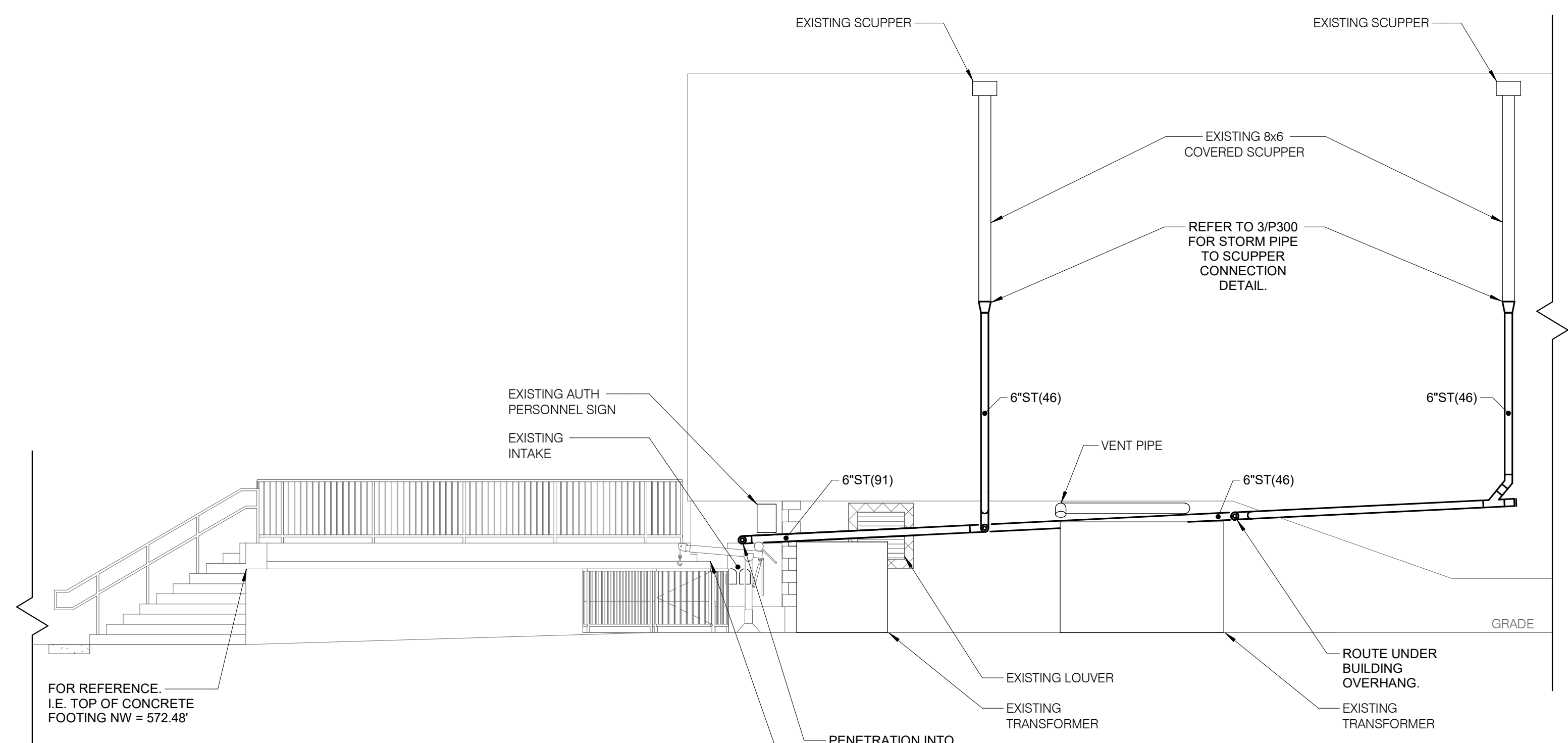
**1 EAST DEMOLITION ELEVATION**  
 NO SCALE



**2 EAST ELEVATION**  
 NO SCALE



**3 WEST DEMOLITION ELEVATION**  
 NO SCALE



**4 WEST ELEVATION**  
 NO SCALE

PROFESSIONAL SEAL

CONSULTANT

KEY PLAN

AGENCY APPROVAL

DISCLAIMER  
 IMEG CORP. RESERVES PROPRIETARY RIGHTS, INCLUDING COPYRIGHTS, TO THIS DRAWING AND THE DATA SHOWN THEREON. SAID DRAWING AND/OR DATA ARE THE EXCLUSIVE PROPERTY OF IMEG CORP. AND SHALL NOT BE USED OR REPRODUCED FOR ANY OTHER PROJECT WITHOUT THE EXPRESS WRITTEN APPROVAL AND PARTICIPATION OF IMEG CORP. ©2023 IMEG CORP.  
 0 1 2 3  
 REF. SCALE IN INCHES PROJECT #23001895.00

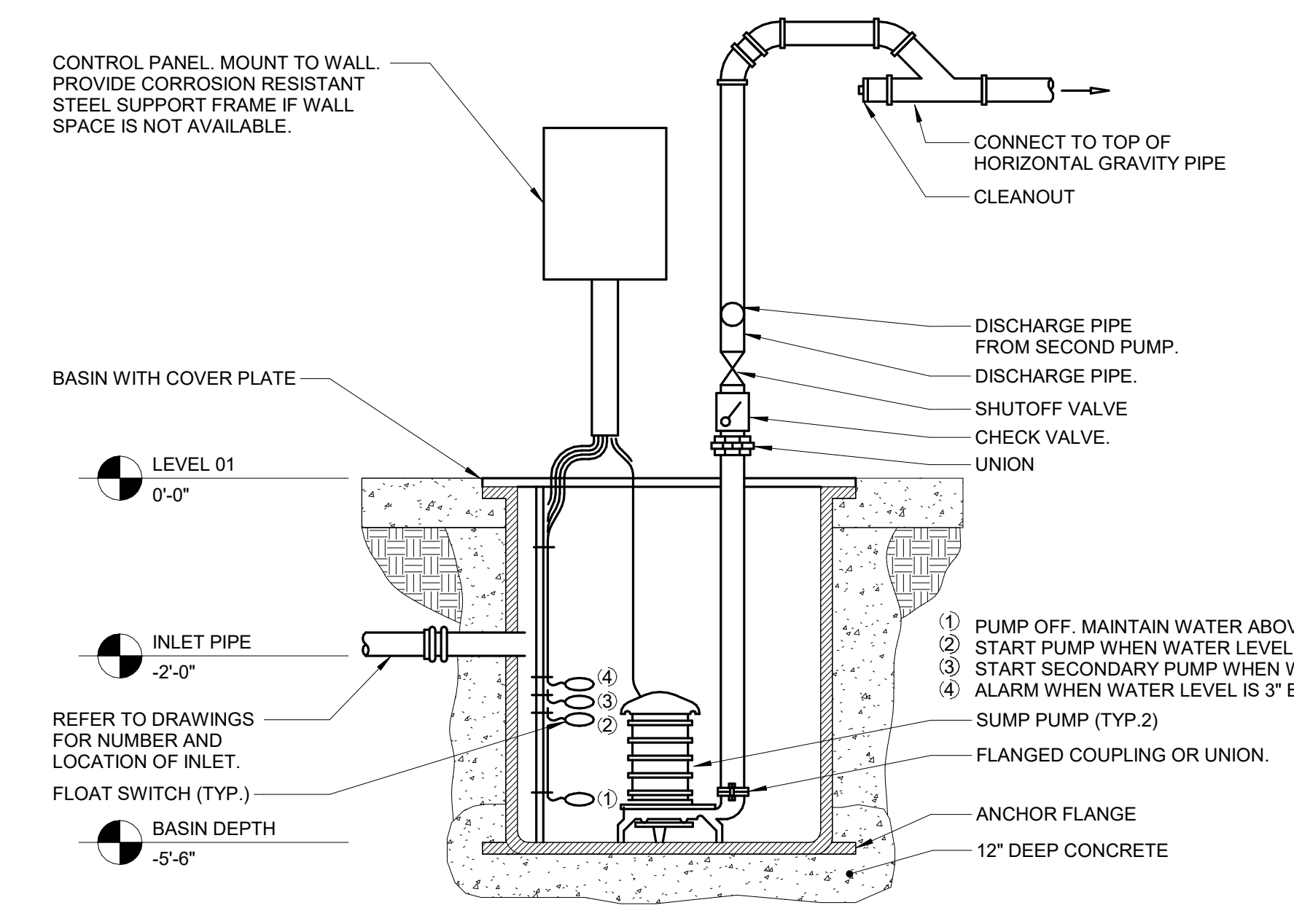
| No. | Date | Revision / Issue |
|-----|------|------------------|
|     |      |                  |

SHEET INFORMATION  
 Issue **ISSUED FOR BID/CONSTRUCTION**  
 Date **5/19/2023**  
 Project # **23001895.00**  
 Drawn **MB**  
 Checked **JO**  
 Approved **JO**

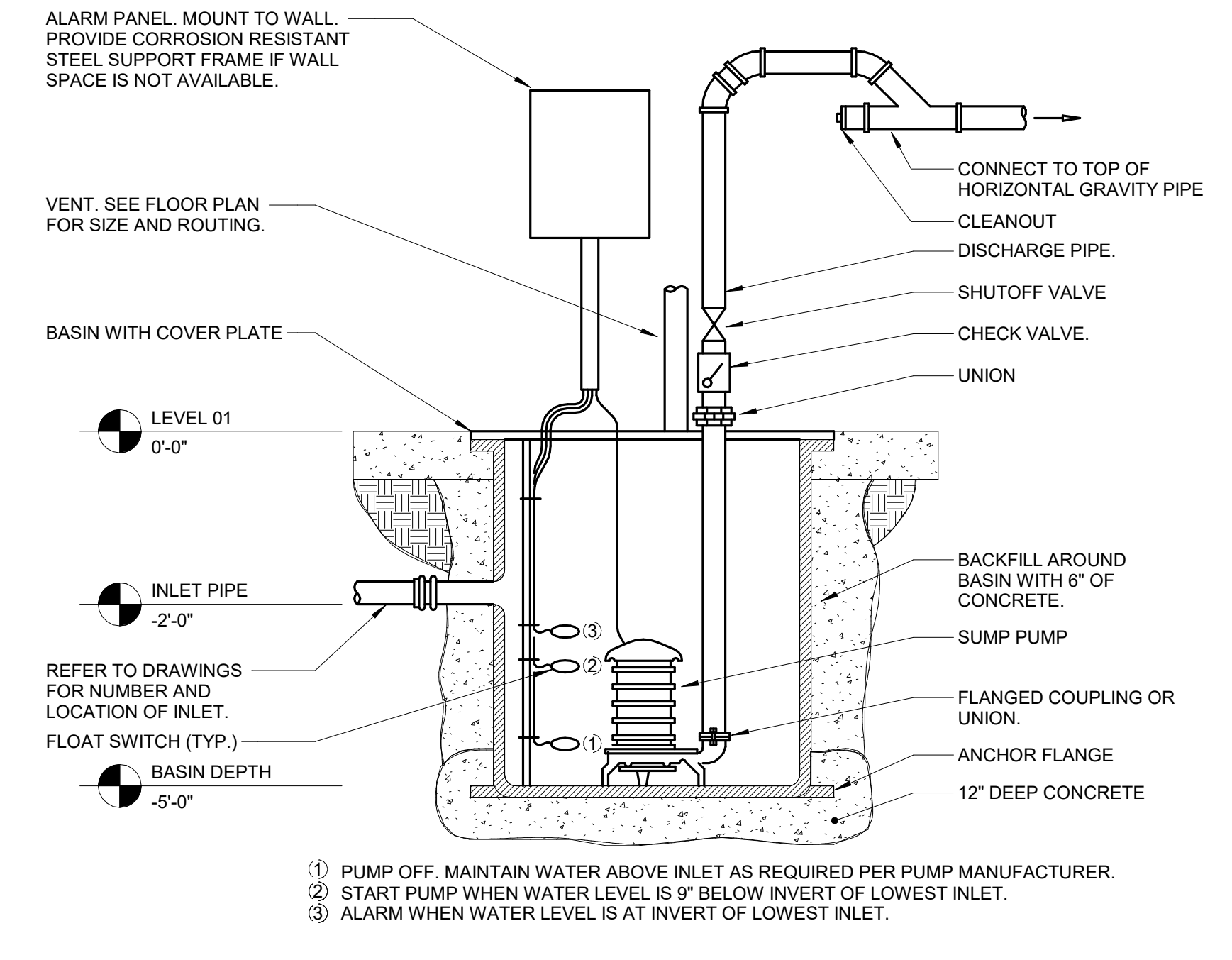
SHEET TITLE  
**PLUMBING ELEVATIONS**

SCALE  
**3/16" = 1'-0"**

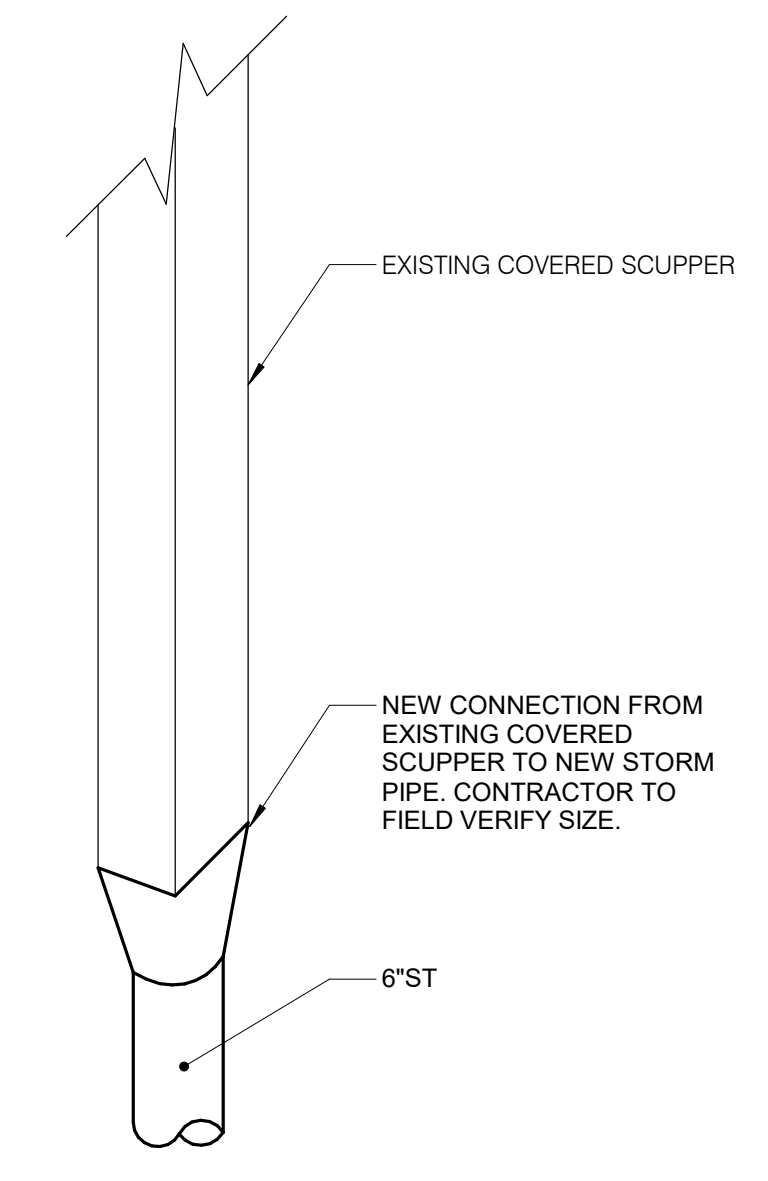
SHEET NUMBER



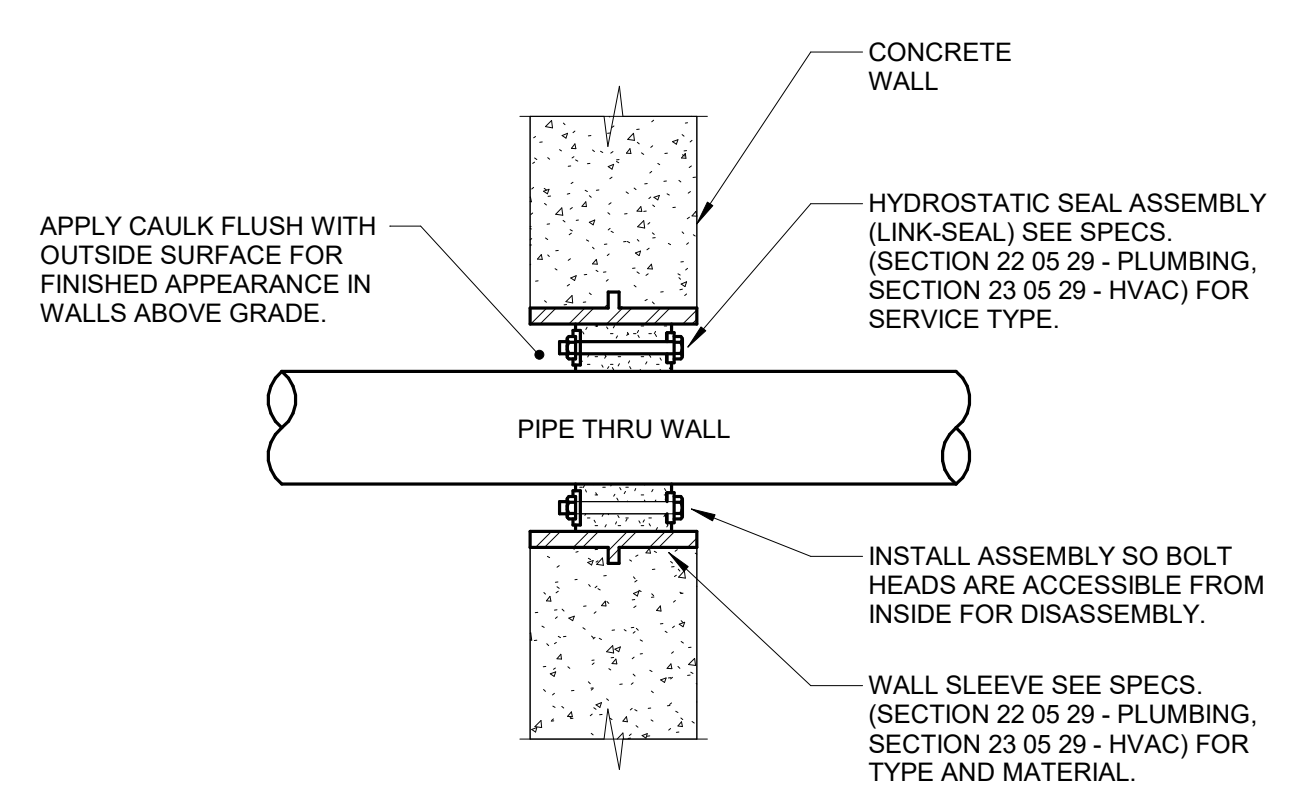
**1 SUMP PUMP - SUBMERSED DUPLEX**  
 NO SCALE



**2 SEWAGE PUMP - SUBMERSED SIMPLEX**  
 NO SCALE

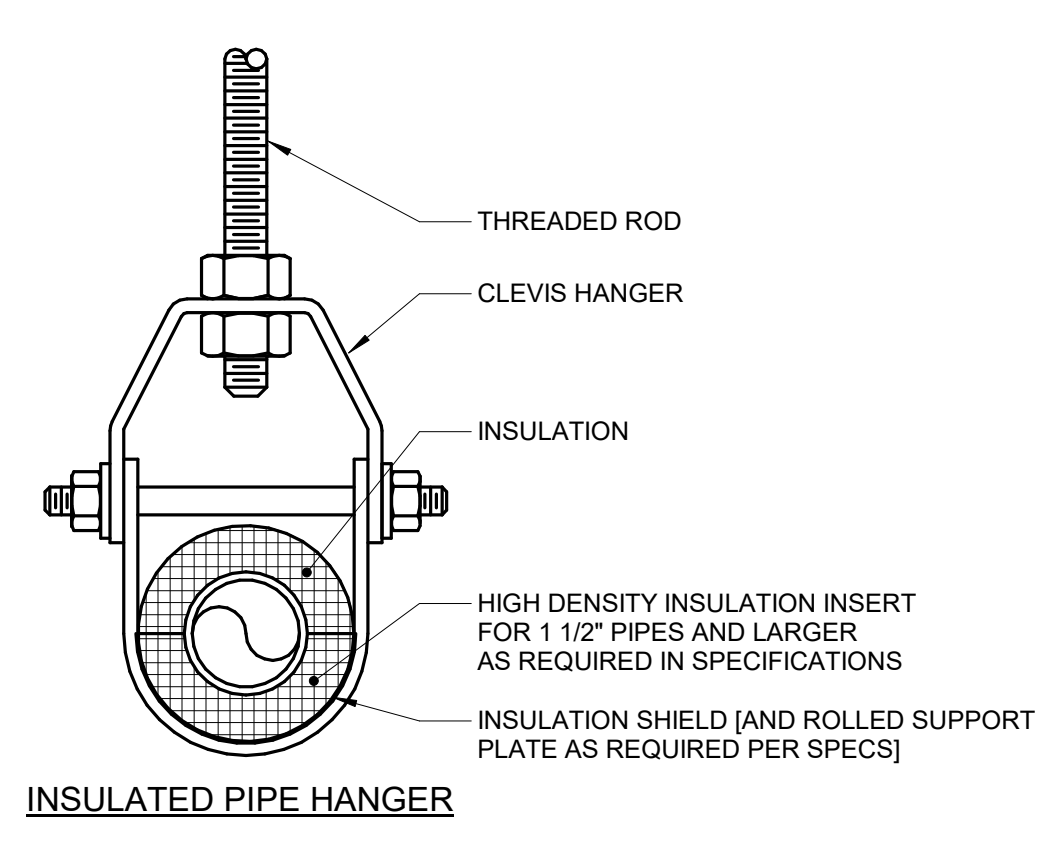


**3 SCUPPER TO PIPE DETAIL**  
 NO SCALE



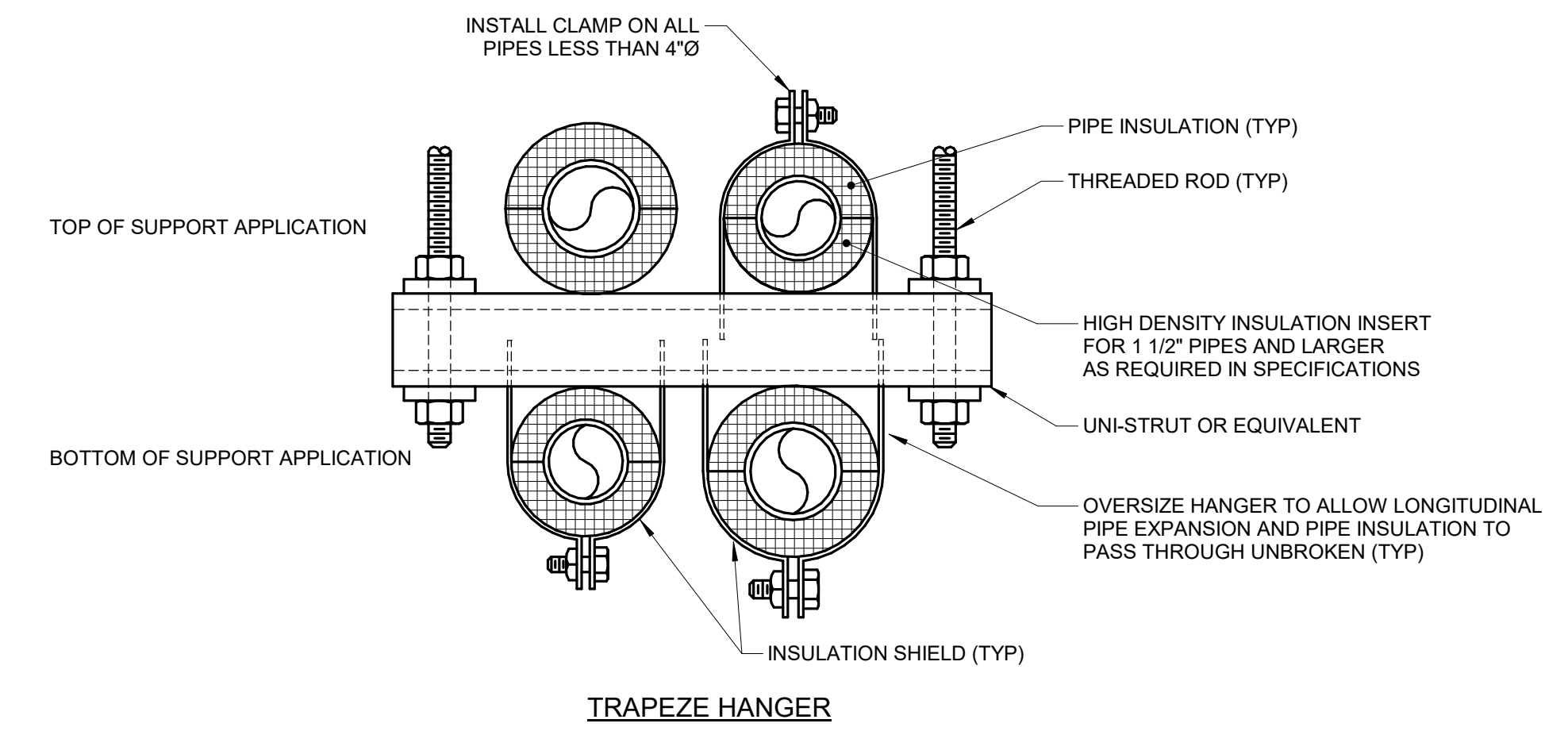
**4 WALL PENETRATION - EXTERIOR - PIPING**  
 NO SCALE

- NOTES:
1. CONTRACTOR MAY FABRICATE PIPE SLEEVE.
  2. SEAL SELECTION BASED ON O.D. OF PIPE THRU WALL AND I.D. OF SLEEVE.
  3. SLEEVE NOT REQUIRED FOR CORE DRILLED PENETRATIONS.



**5 PIPE - HANGERS AND SUPPORTS**  
 NO SCALE

- NOTES:
1. REFER TO SPECIFICATION SECTIONS 22 05 29-PLUMBING, SECTION 22 07 19-PLUMBING.



PROFESSIONAL SEAL

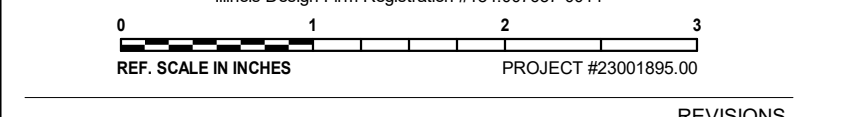
CONSULTANT

KEY PLAN

AGENCY APPROVAL

DISCLAIMER

IMEG CORP. RESERVES PROPRIETARY RIGHTS, INCLUDING COPYRIGHTS, TO THIS DRAWING AND THE DATA, DESIGN, THEORY, AND DRAWING. ALL RIGHTS ARE THE EXCLUSIVE PROPERTY OF IMEG CORP. AND SHALL NOT BE USED OR REPRODUCED FOR ANY OTHER PROJECT WITHOUT THE EXPRESS WRITTEN APPROVAL AND PARTICIPATION OF IMEG CORP. ©2023 IMEG CORP.  
MECA Design Firm Registration #104-00701-0014



| No. | Date | Revision / Issue |
|-----|------|------------------|
|     |      |                  |

SHEET INFORMATION

|           |                             |
|-----------|-----------------------------|
| Issue     | ISSUED FOR BID/CONSTRUCTION |
| Date      | 5/19/2023                   |
| Project # | 23001895.00                 |
| Drawn     | MB                          |
| Checked   | JO                          |
| Approved  | JO                          |

SHEET TITLE  
**PLUMBING DETAILS**

SCALE  
 12" = 1'-0"

SHEET NUMBER

**P300**