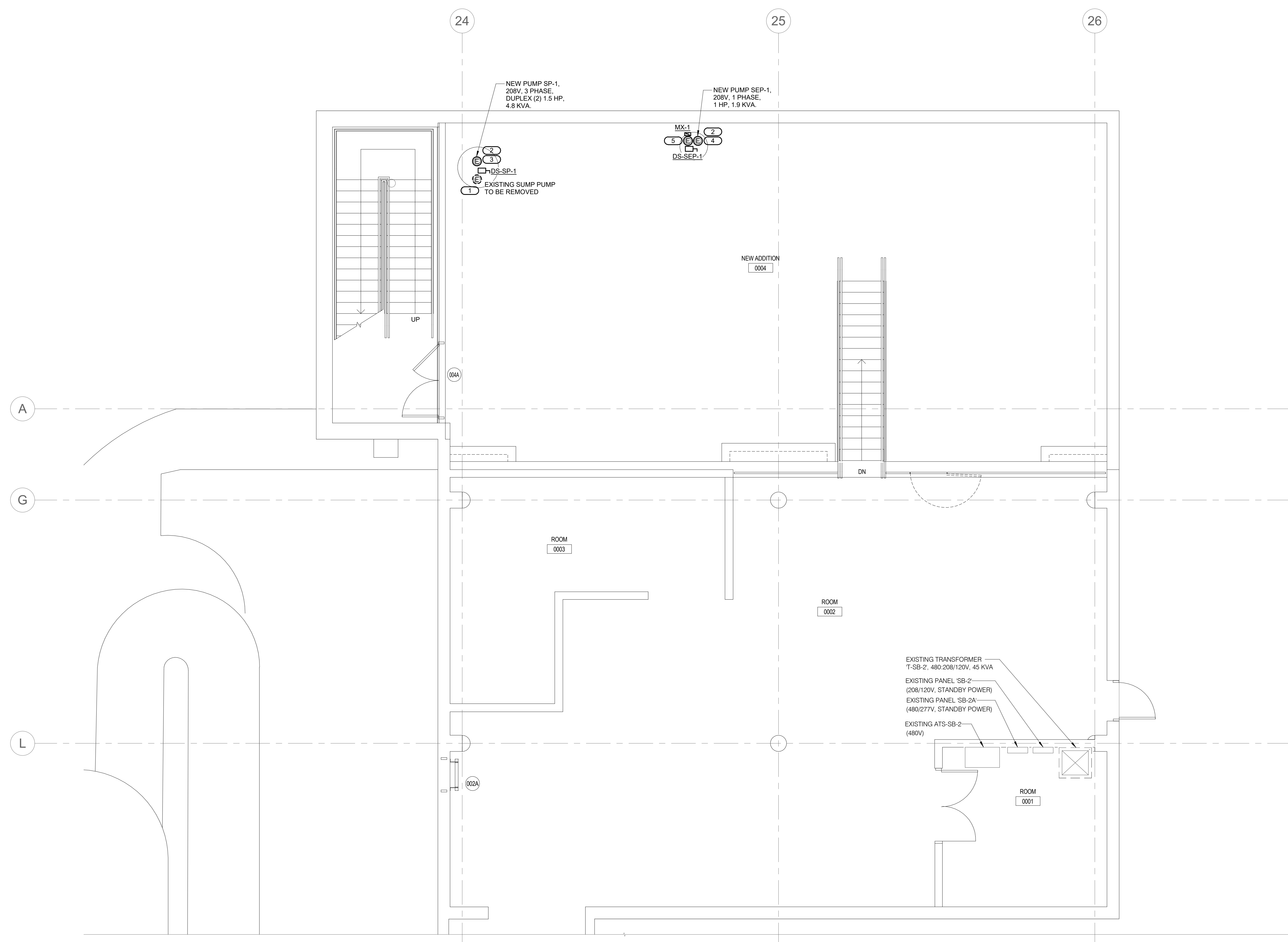


SHEET NOTES:
 1. REFER TO SHEET E000 FOR GENERAL ELECTRICAL NOTES, ELECTRICAL INSTALLATION NOTES, ELECTRICAL RENOVATION NOTES, ELECTRICAL SPECIFICATION NOTES.

KEYNOTES:
 1. REMOVE CONDUIT AND WIRING FOR ONE 208V, SINGLE PHASE CIRCUIT BACK TO EXISTING PANEL 'SB-2'. ONE EXISTING 208V, 20A SINGLE PHASE CIRCUIT TO REMAIN. CIRCUIT TO BE USED FOR NEW SEP-1 PUMP. REFER TO KEYNOTE 4.
 2. REMOVE CONTROL PANEL AND ASSOCIATED CABLES BETWEEN CONTROL PANEL AND PUMPS. THE 120V, 20A CIRCUIT FOR CONTROLS TO REMAIN. CIRCUITS TO BE INTERCEPTED AND USED FOR NEW SEP-1 HIGH WATER ALARM PANEL. REFER TO KEYNOTE 5.
 3. CONNECT TO MANUFACTURER PROVIDED CONTROL PANEL. ROUTE CABLES FROM CONTROL PANEL TO THE PUMPS.
 4. ROUTE BRANCH CIRCUIT (3#12 & 1#12 GND IN 3/4" C.) TO EXISTING PANEL 'SB-2'. PROVIDE NEW 20A/3P, 208V CIRCUIT BREAKER. PROVIDE ALL REQUIRED HARDWARE AND ACCESSORIES TO MAKE COMPLETE AND FUNCTIONAL SYSTEM. NEW CIRCUIT BREAKER SHALL MATCH EXISTING TYPE AND RATING.
 5. INTERCEPT EXISTING 208V SINGLE PHASE, 20A CIRCUIT AND EXTEND TO NEW SEP-1 PUMP. MATCH CONDUIT AND WIRING MINIMUM (2#12 & 1#12 GND IN 3/4" C.)
 6. INTERCEPT EXISTING 120V, 20A CIRCUIT AND EXTEND TO NEW PUMP HIGH WATER ALARM PANEL. MATCH EXISTING CONDUIT AND WIRING MINIMUM (2#12 & 1#12 GND IN 3/4" C.)



PROFESSIONAL SEAL

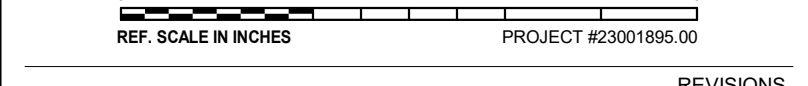
CONSULTANT

KEY PLAN

AGENCY APPROVAL

DISCLAIMER

IMEG CORP. RESERVES PROPRIETARY RIGHTS, INCLUDING COPYRIGHTS, TO THIS DRAWING AND THE DATA SHOWN THEREON. SAID DRAWING AND/OR DATA ARE THE EXCLUSIVE PROPERTY OF IMEG CORP. AND SHALL NOT BE USED OR REPRODUCED FOR ANY OTHER PROJECT WITHOUT THE EXPRESS WRITTEN APPROVAL AND PARTICIPATION OF IMEG CORP. ©2023 IMEG CORP.
Imeg Design Firm Registration #184-00761-0014



REVISIONS

No.	Date	Revision / Issue

SHEET INFORMATION

Issue: **ISSUED FOR BID/CONSTRUCTION**
 Date: **5/19/2023**
 Project #: **23001895.00**
 Drawn: **TB**
 Checked: **JML**
 Approved: **JML**

SHEET TITLE

SUB-VAULT D PLAN - ELECTRICAL

SCALE

Scale: **1/4" = 1'-0"**

SHEET NUMBER

E101

1 SUB-VAULT D PLAN - ELECTRICAL
1/4" = 1'-0"

23001895.00 6/28/2023 2:59:43 PM SUB-VAULT D - PLUMBING REVISIONS