

# Boiler House

## KEYNOTES

KEYNOTES ARE NOT ALWAYS REPEATED ACROSS ALL DRAWINGS ON THIS SHEET. AN UN-KEYNOTED ITEM ON THIS SHEET IS THE SAME AS A KEYNOTED ITEM ON THIS SHEET HAVING THE SAME GRAPHIC APPEARANCE.

- 26.100 DEMOLISH EXISTING UNDERGROUND DISTRIBUTION SWITCHGEAR TO BE REMOVED AND REPLACED.
- 26.200 PROVIDE NEW UNDERGROUND DISTRIBUTION SWITCHGEAR. S&C VISTA  
- CATALOG NUMBER 934222R1-L20P4T2.

NOTES:  
1. SEE SKETCH ESK003 FOR MORE DETAILS.

# KLUBER

Architects + Engineers

Chicago, Illinois 60606  
tel. 312.667.5670  
Aurora, Illinois 60506  
tel. 630.406.1213

## MISC. ELECTRICAL PROJECTS

JOLIET JUNIOR COLLEGE  
1215 HOUBOLT ROAD  
JOLIET, ILLINOIS 60431

100% OWNER REVIEW

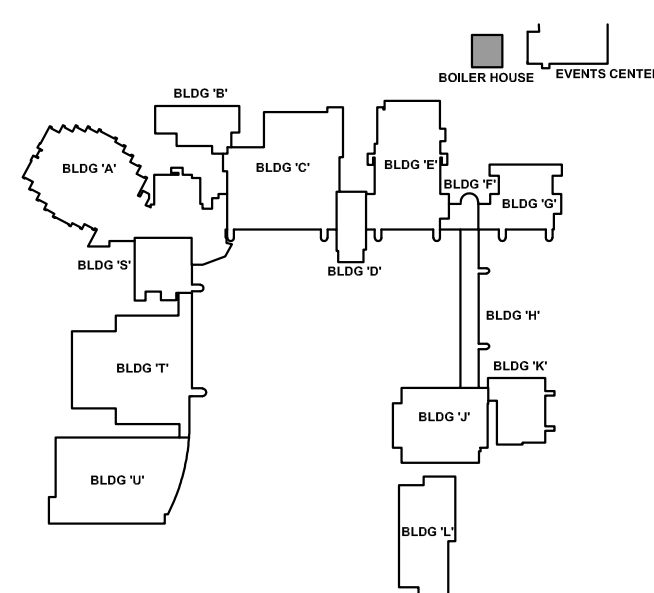
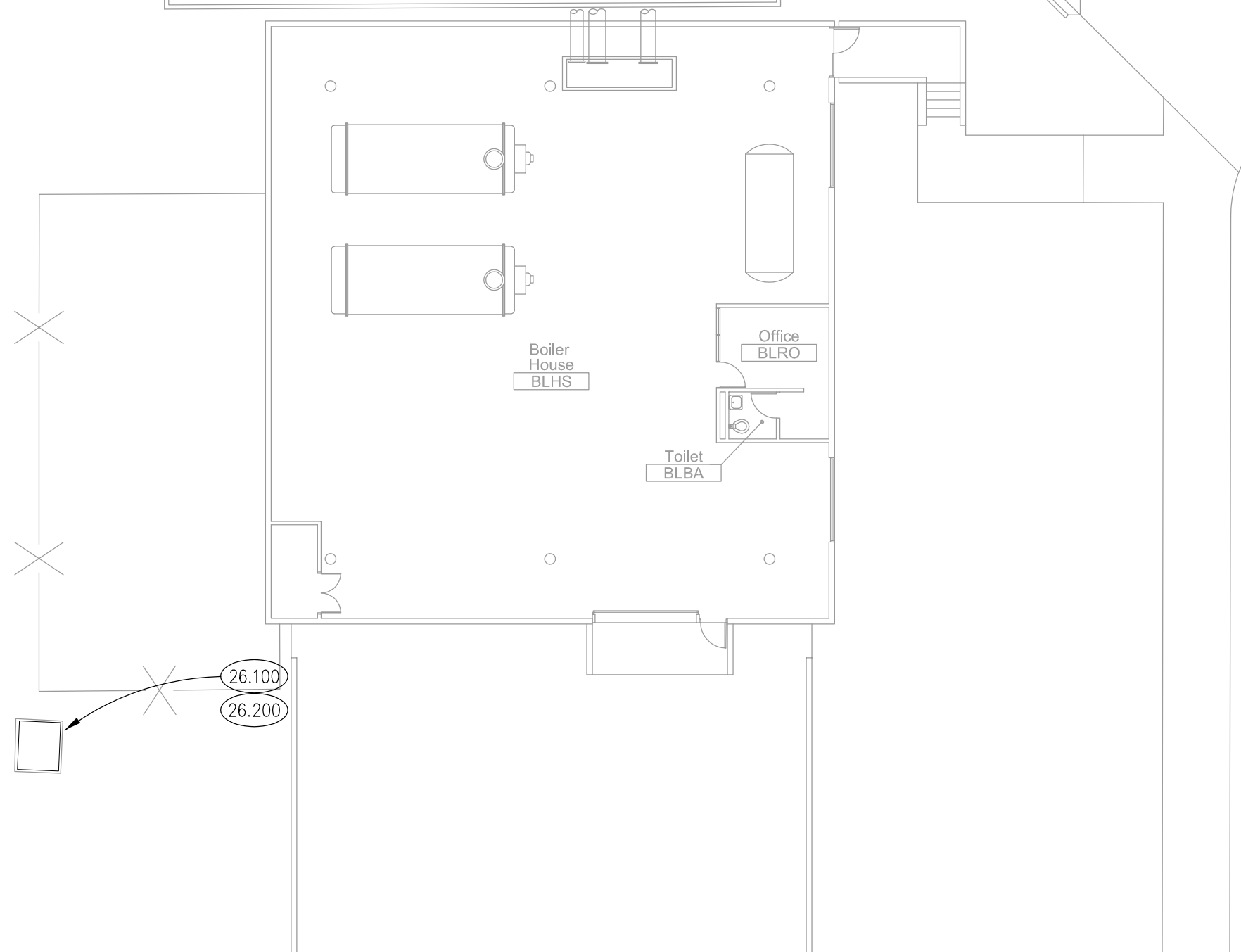
JOB NO. 22-292-1437

DRAWN ATR

DATE 10/28/22

DRAWING NUMBER

# E001



## ELECTRICAL PLAN - SWITCHGEAR

SCALE: 1/16" = 1'-0"

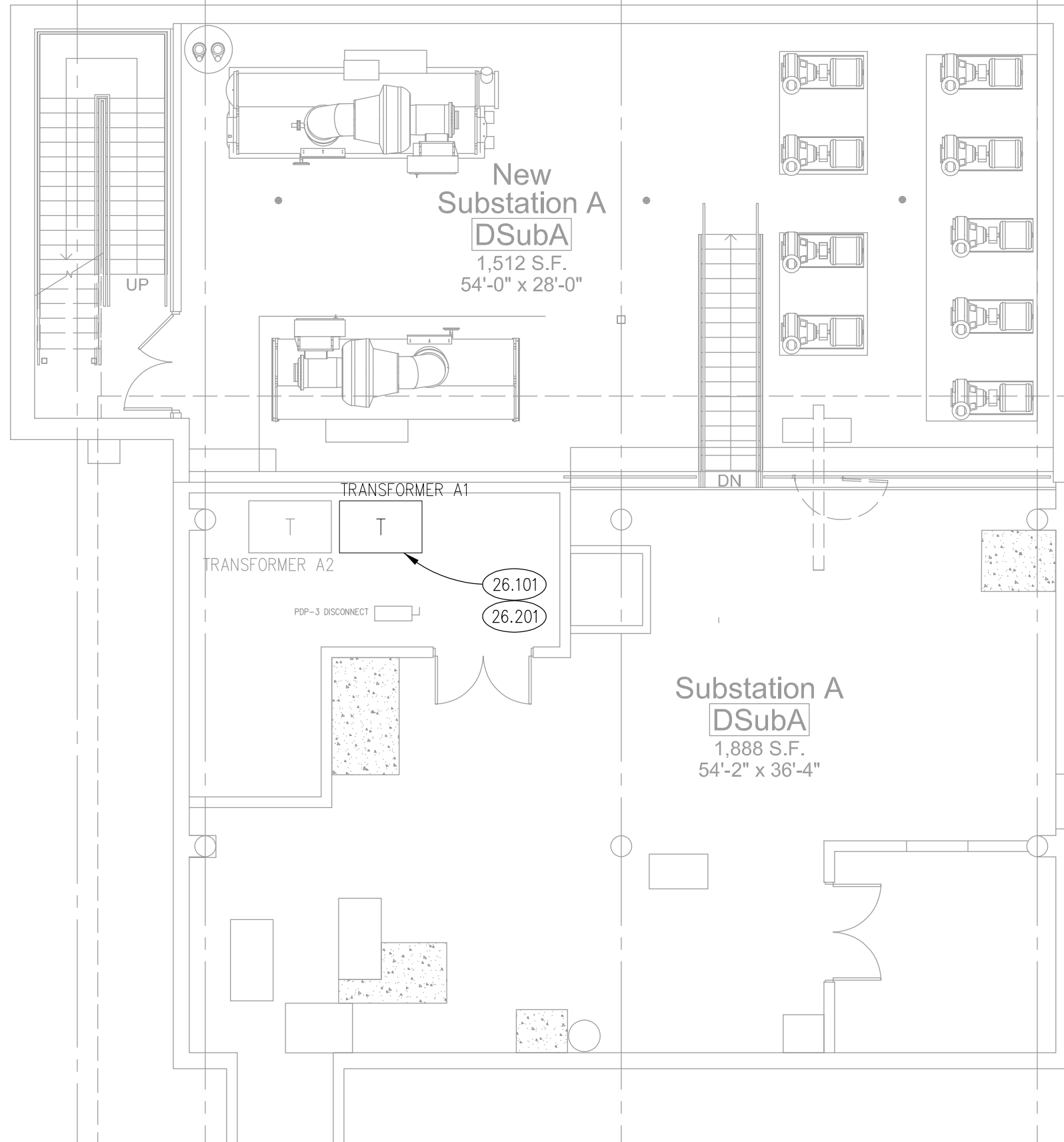
1

P:\1437 - Joliet Junior College - Misc. Electrical Projects\30\_Design\Drawings\DD-CD\60\_Elec\1437E001.dwg, 11/7/2022 12:24:14 PM, imtk

family  
toilet  
1107

men's  
toilet  
1104

P:\1437 - Joliet Junior College - Misc. Electrical Projects\30\_Design\Drawings\DD-CD\60\_Elec\1437E0002.dwg, 11/17/2022 12:31:08 PM, mtk

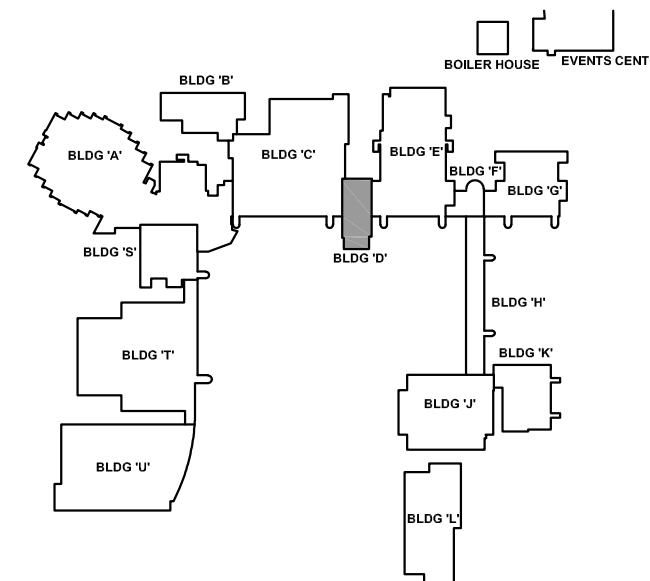


**KEYNOTES**

KEYNOTES ARE NOT ALWAYS REPEATED ACROSS ALL DRAWINGS ON THIS SHEET. AN UN-KEYNOTED ITEM ON THIS SHEET IS THE SAME AS A KEYNOTED ITEM ON THIS SHEET HAVING THE SAME GRAPHIC APPEARANCE.

- 26.101 DEMOLISH EXISTING 500kVA TRANSFORMER.
- 26.201 PROVIDE NEW 500 kVA DRY TYPE MEDIUM VOLTAGE TRANSFORMER: PRIMARY VOLTAGE 12,470V DELTA, SECONDARY

NOTES:  
1. SEE SKETCH ESK004,5 FOR MORE DETAILS.



**ELECTRICAL PLAN - TRANSFORMER - ALT NO. 1**

SCALE: 1/8" = 1'-0"

1

NOTE: SCALES DERICTED ON THIS DRAWING ARE NOT CORRECT UNLESS PLOTTED SHEET SIZE IS 11 X 17 INCHES.

**Kluber**  
Architects + Engineers  
Chicago, Illinois 60606  
tel. 312.667.5670  
Aurora, Illinois 60506  
tel. 630.406.1213

**MISC. ELECTRICAL PROJECTS**  
  
JOLIET JUNIOR COLLEGE  
1215 HOUBOULT ROAD  
JOLIET, ILLINOIS 60431

100% OWNER REVIEW

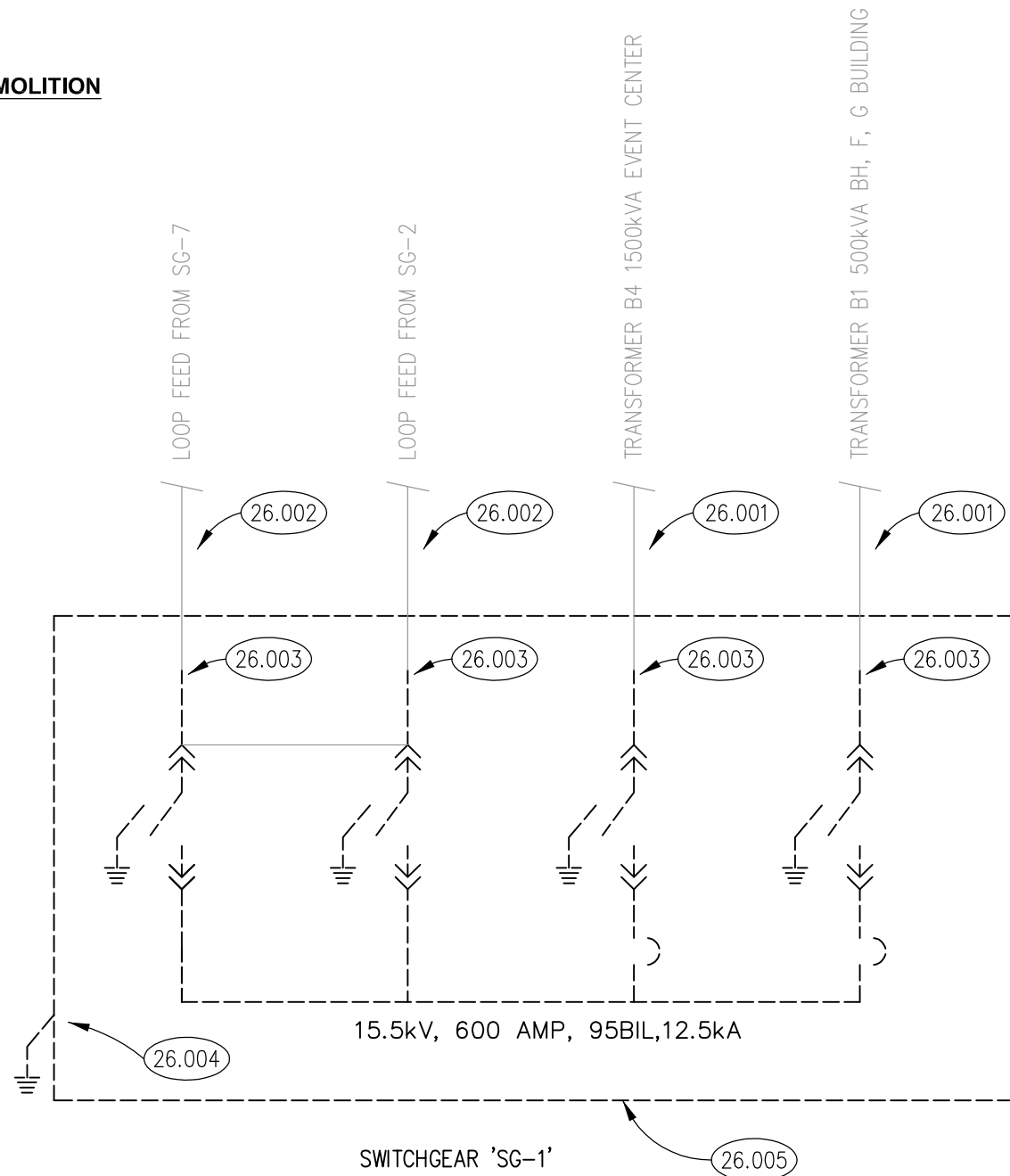
JOB NO. 22-292-1437  
DRAWN ATR  
DATE 10/28/22

DRAWING NUMBER  
**E002**

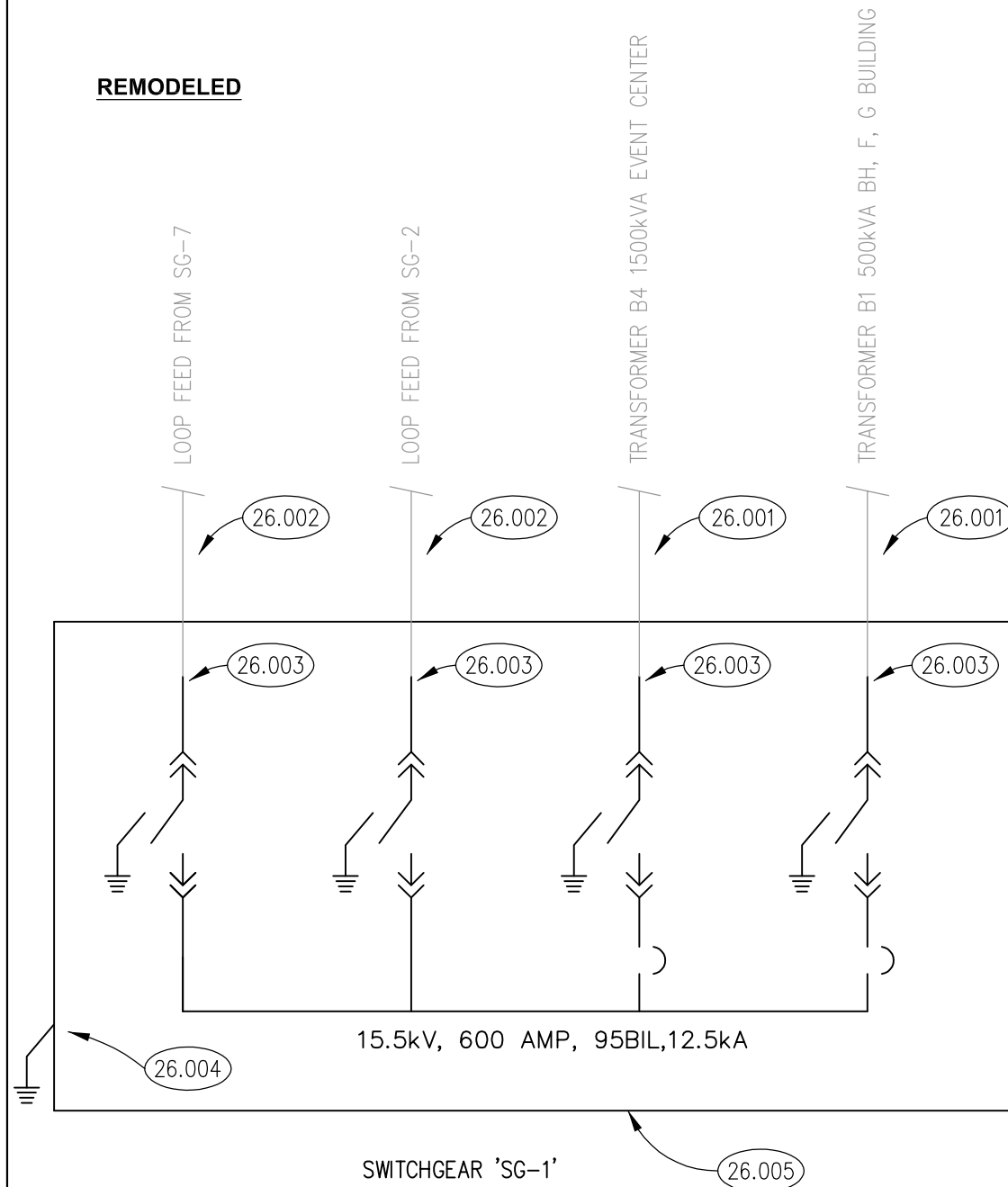
**MISC. ELECTRICAL PROJECTS**

JOLIET JUNIOR COLLEGE  
1215 HOUBOULT ROAD  
JOLIET, ILLINOIS 60431

**DEMOLITION**



**REMODELED**



**ONE LINE RISER DIAGRAM - SWITCHGEAR 'SG1'**

SCALE: N.T.S

1

**KEYNOTES**

- 26.001 CONTRACTOR: DE-ENERGIZE AND RE-ENERGIZE CAMPUS SECONDARY LOADS AT BUILDINGS.
- 26.002 OWNER: DE-ENERGIZE 15kV LOOP AFTER CAMPUS SECONDARY LOADS HAVE BEEN DISCONNECTS. RE-ENERGIZE 15kV LOOP PRIOR TO CAMPUS SECONDARY BEING RECONNECTED.
- 26.003 DISCONNECT AND RECONNECT 15KV LOAD BREAK ELBOWS. VERIFY COMPATIBILITY WITH NEW EQUIPMENT.
- 26.004 DISCONNECT AND RECONNECT GROUNDING CONDUCTORS AT EACH GROUND PAD. VERIFY LOCATION OF GROUND CONDUCTORS AND PAD LOCATIONS.

KEYNOTES ARE NOT ALWAYS REPEATED ACROSS ALL DRAWINGS ON THIS SHEET. AN UN-KEYNOTED ITEM ON THIS SHEET IS THE SAME AS A KEYNOTED ITEM ON THIS SHEET HAVING THE SAME GRAPHIC APPEARANCE.

- 26.005 VERIFY ANCHOR BOLT LOCATIONS PRIOR TO REMOVAL AND VERIFY COMPATILITY WITH NEW EQUIPMENT. CAULK NEW EQUIPMENT AS RECOMMENDED BY MFR.
- 26.100 DEMOLISH EXISTING UNDERGROUND DISTRIBUTION SWITCHGEAR TO BE REMOVED AND REPLACED.
- 26.200 PROVIDE NEW UNDERGROUND DISTRIBUTION SWITCHGEAR. S&C VISTA UNDERGROUND DISTRIBUTION SWITCHGEAR - CATALOG NUMBER 934222R1-L20P4T2.

100% OWNER REVIEW

JOB NO. 22-292-1437

DRAWN ATR

DATE 10/28/22

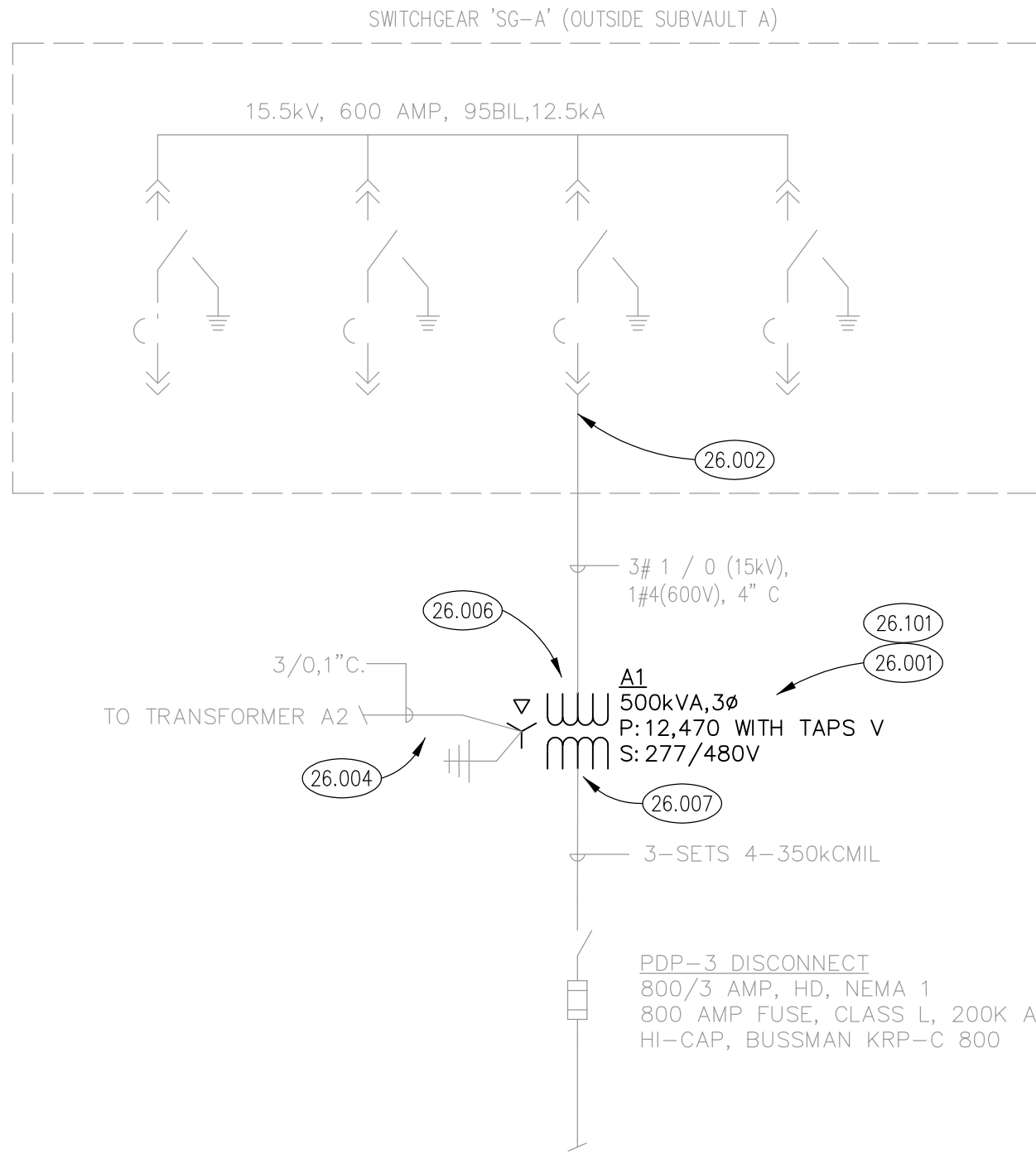
DRAWING NUMBER

**E003**

# KEYNOTES

KEYNOTES ARE NOT ALWAYS REPEATED ACROSS ALL DRAWINGS ON THIS SHEET. AN UN-KEYNOTED ITEM ON THIS SHEET IS THE SAME AS A KEYNOTED ITEM ON THIS SHEET HAVING THE SAME GRAPHIC APPEARANCE.

- 26.001 CONTRACTOR: DE-ENERGIZE AND RE-ENERGIZE CAMPUS SECONDARY LOADS AT BUILDINGS.
- 26.002 OWNER: DE-ENERGIZE 15kV LOOP AFTER CAMPUS SECONDARY LOADS HAVE BEEN DISCONNECTS. RE-ENERGIZE 15kV LOOP PRIOR TO CAMPUS SECONDARY BEING RECONNECTED.
- 26.004 DISCONNECT AND RECONNECT GROUNDING CONDUCTORS AT EACH GROUND PAD. VERIFY LOCATION OF GROUND CONDUCTORS AND PAD LOCATIONS.
- 26.006 DISCONNECT AND RECONNECT 15kV CABLES. RE-USE TERMINATION KIT. VERIFY COMPATIBILITY WITH NEW EQUIPMENT.
- 26.007 DISCONNECT AND RECONNECT SECONDARY 600V CONDUCTOROS. RE-USE TERMINAL LUGS.
- 26.101 DEMOLISH EXISTING 500kVA TRANSFORMER.
- 26.201 PROVIDE NEW 500 kVA DRY TYPE MEDIUM VOLTAGE TRANSFORMER: PRIMARY VOLTAGE 12,470V DELTA, SECONDARY VOLTAGE: 277/480V WYE.



**Klubber**  
Architects + Engineers

Chicago, Illinois 60606  
tel. 312.667.5670  
Aurora, Illinois 60506  
tel. 630.406.1213

**MISC. ELECTRICAL PROJECTS**

JOLIET JUNIOR COLLEGE  
1215 HOUBOULT ROAD  
JOLIET, ILLINOIS 60431

100% OWNER REVIEW

JOB NO. 22-292-1437

DRAWN ATR

DATE 10/28/22

DRAWING NUMBER

**E004**

## DEMOLITION ONE LINE RISER DIAGRAM - TRANSFORMER 'A1'

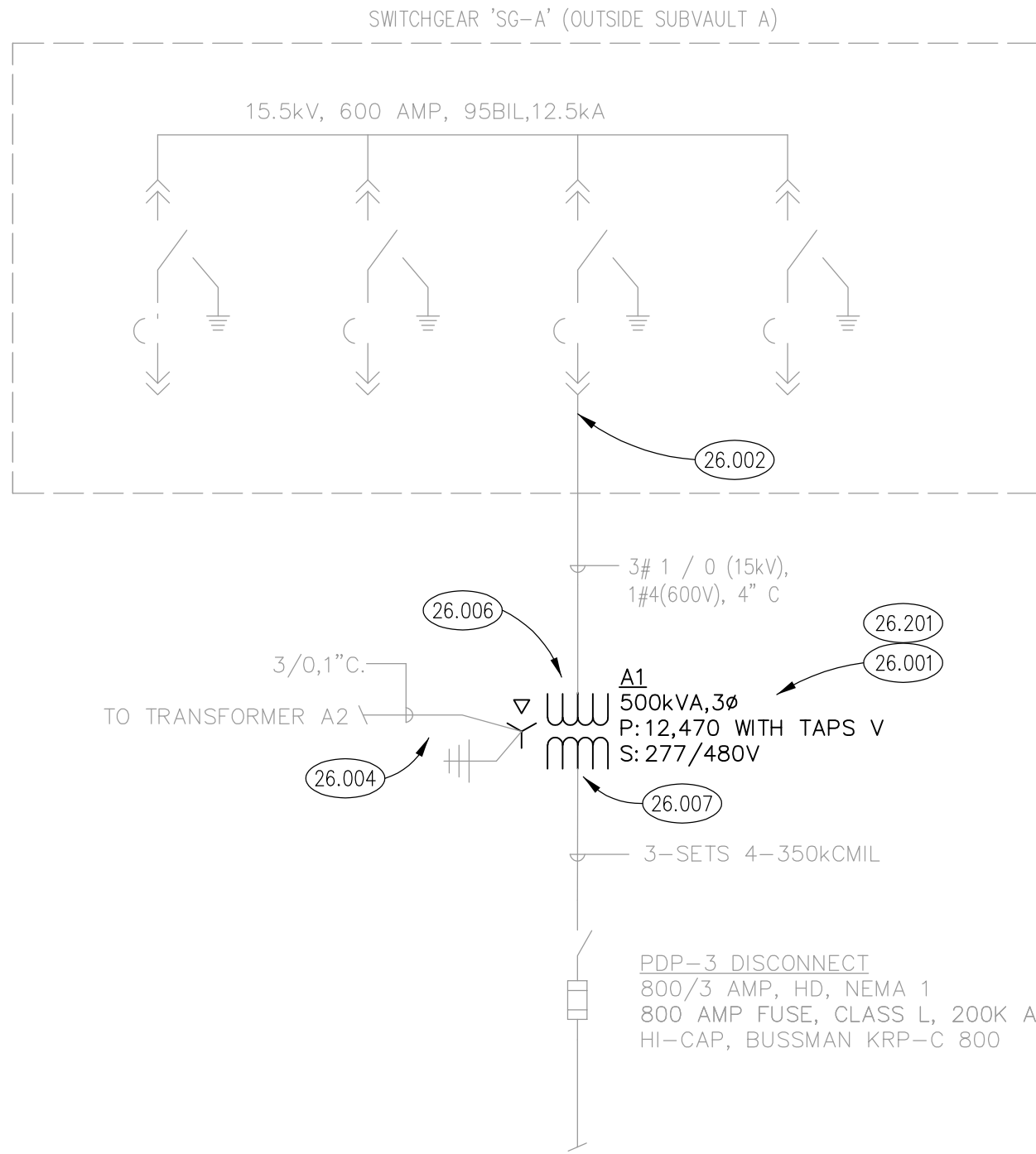
SCALE: N.T.S

1

# KEYNOTES

KEYNOTES ARE NOT ALWAYS REPEATED ACROSS ALL DRAWINGS ON THIS SHEET. AN UN-KEYNOTED ITEM ON THIS SHEET IS THE SAME AS A KEYNOTED ITEM ON THIS SHEET HAVING THE SAME GRAPHIC APPEARANCE.

- 26.001 CONTRACTOR: DE-ENERGIZE AND RE-ENERGIZE CAMPUS SECONDARY LOADS AT BUILDINGS.
- 26.002 OWNER: DE-ENERGIZE 15kV LOOP AFTER CAMPUS SECONDARY LOADS HAVE BEEN DISCONNECTS. RE-ENERGIZE 15kV LOOP PRIOR TO CAMPUS SECONDARY BEING RECONNECTED.
- 26.004 DISCONNECT AND RECONNECT GROUNDING CONDUCTORS AT EACH GROUND PAD. VERIFY LOCATION OF GROUND
- 26.006 DISCONNECT AND RECONNECT 15kV CABLES. RE-USE TERMINATION KIT. VERIFY COMPATIBILITY WITH NEW
- 26.007 DISCONNECT AND RECONNECT SECONDARY 600V CONDUCTOROS. RE-USE TERMINAL LUGS.
- 26.101 DEMOLISH EXISTING 500kVA TRANSFORMER.
- 26.201 PROVIDE NEW 500 kVA DRY TYPE MEDIUM VOLTAGE TRANSFORMER: PRIMARY VOLTAGE 12,470V DELTA, SECONDARY



**Klubber**  
Architects + Engineers

Chicago, Illinois 60606  
tel. 312.667.5670  
Aurora, Illinois 60506  
tel. 630.406.1213

**MISC. ELECTRICAL PROJECTS**

JOLIET JUNIOR COLLEGE  
1215 HOUBOULT ROAD  
JOLIET, ILLINOIS 60431

100% OWNER REVIEW

JOB NO. 22-292-1437

DRAWN ATR

DATE 10/28/22

DRAWING NUMBER

**E005**

## REMODELED ONE LINE RISER DIAGRAM - TRANSFORMER 'A1'

SCALE: N.T.S

1