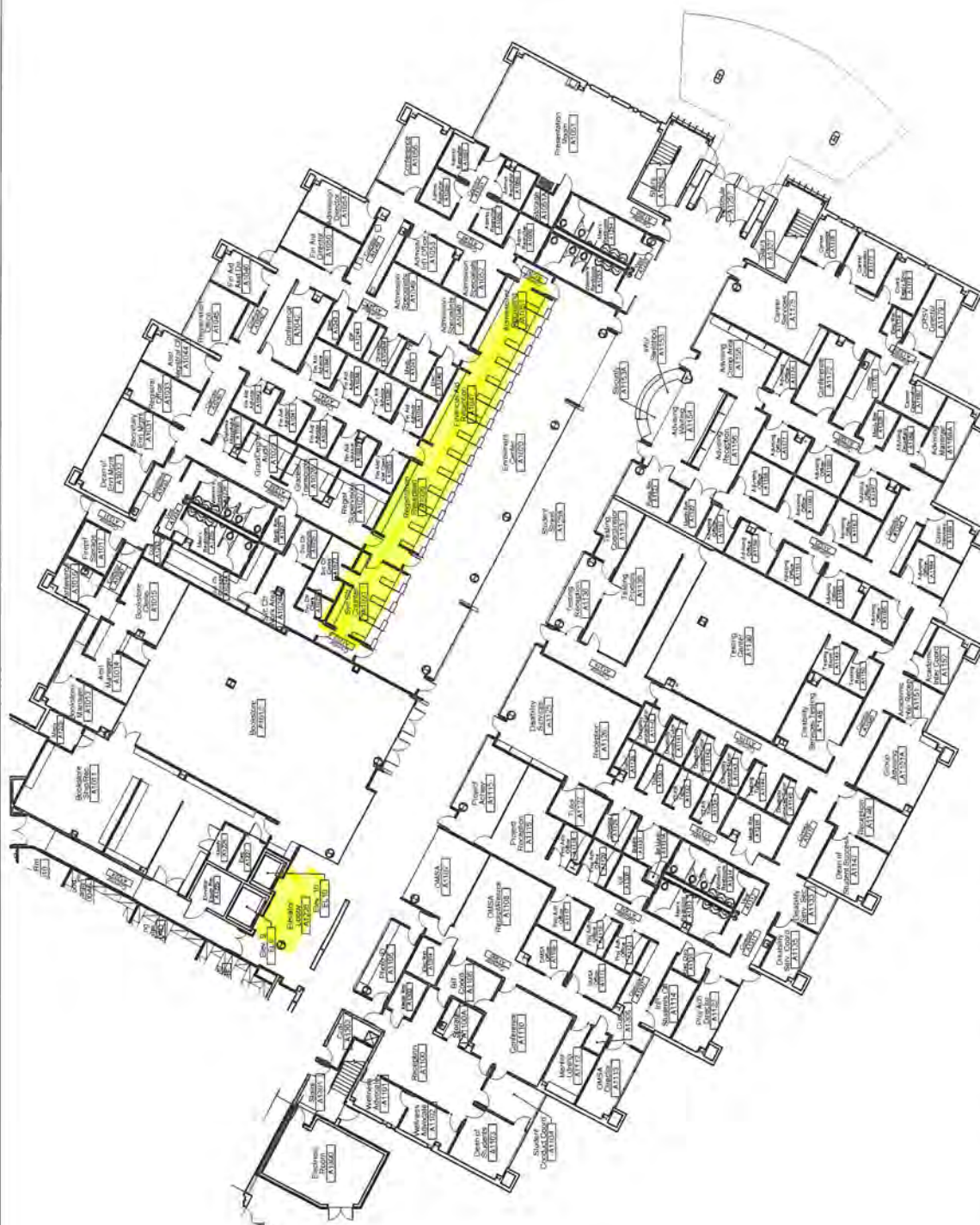
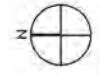
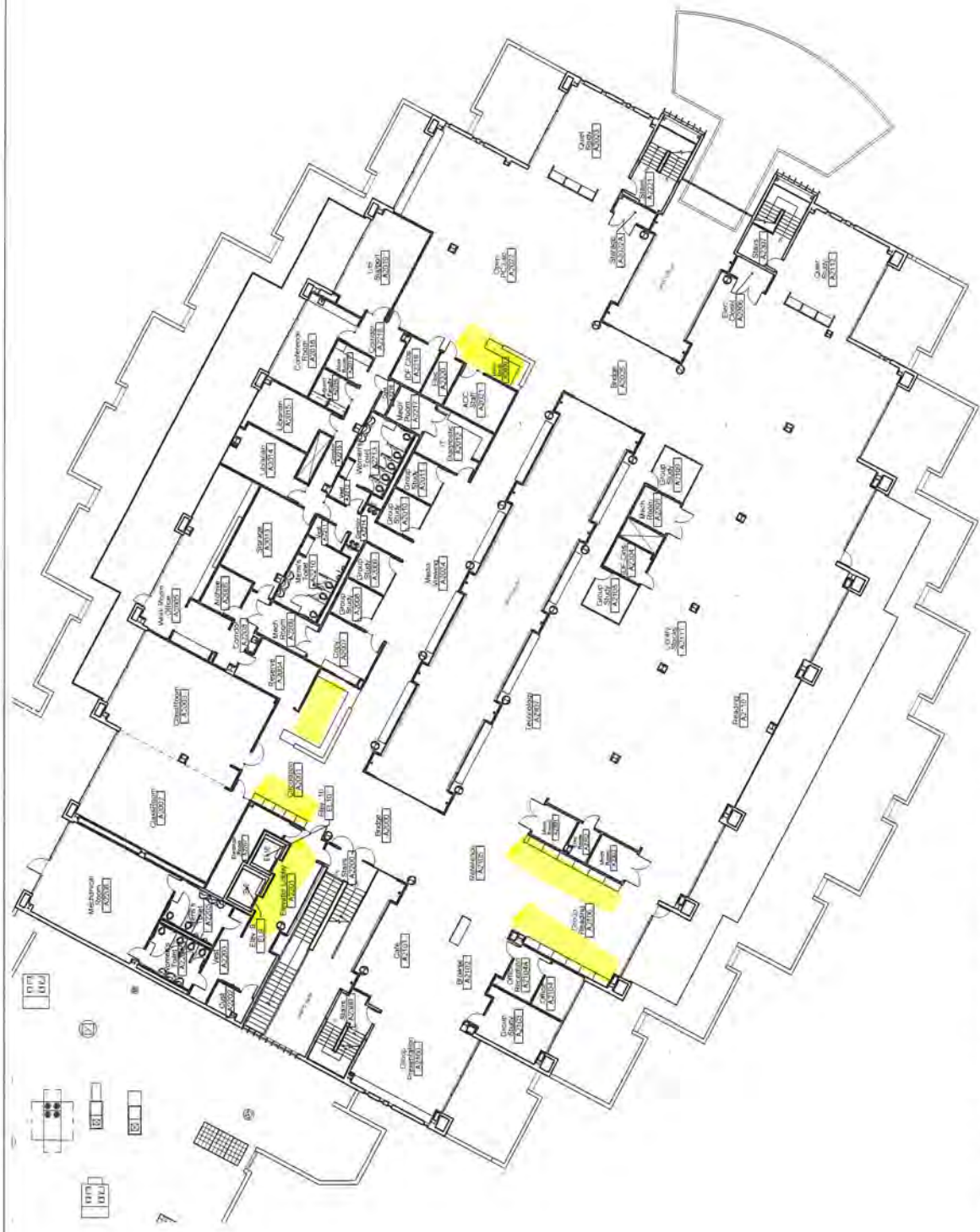


a. All acoustical glass ceiling tiles (Enrollment Center, Library and Elevator lobbies 1<sup>st</sup> and 2<sup>nd</sup> floors)



A BUILDING FIRST FLOOR PLAN (EAST)

NTS



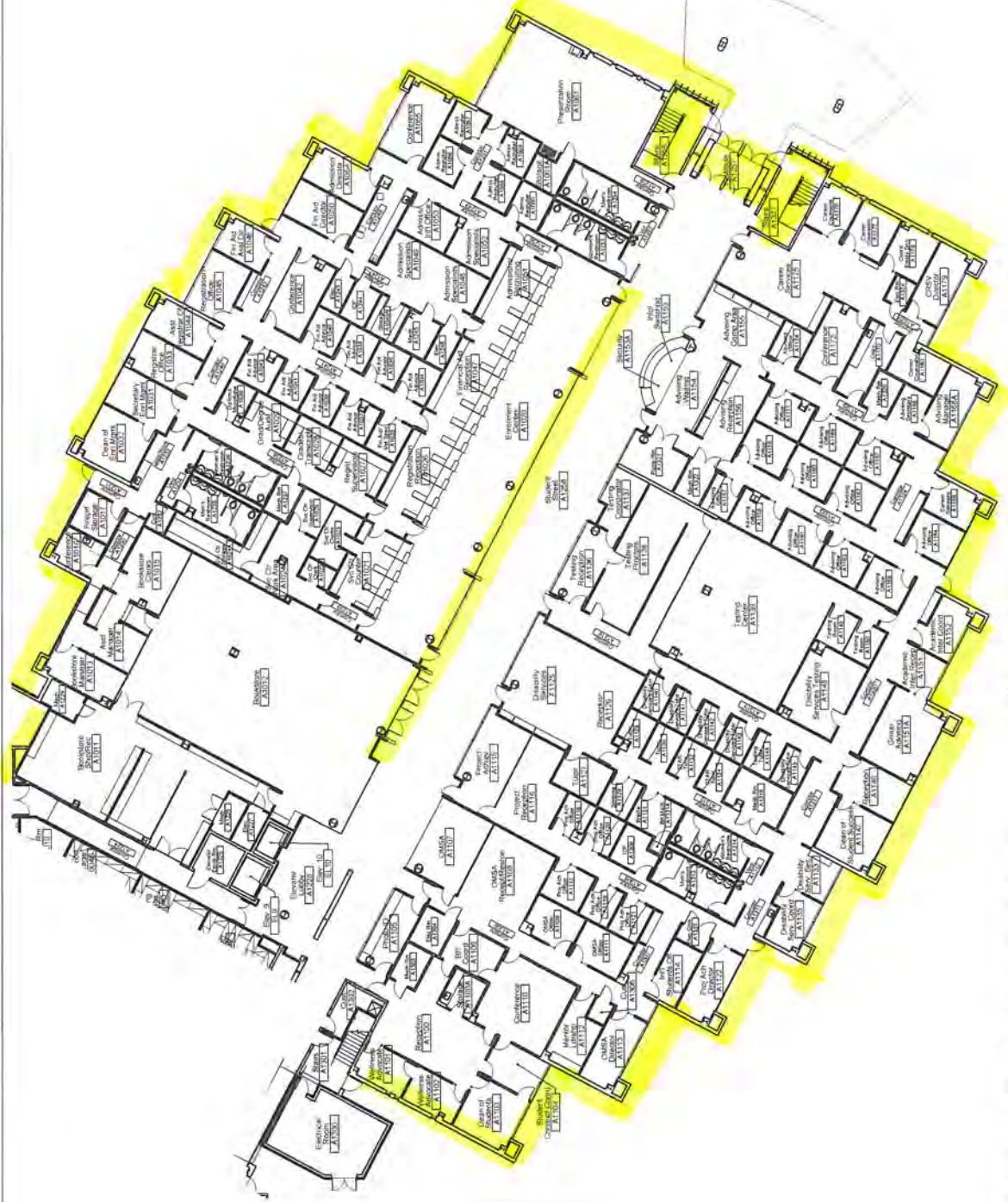
A BUILDING SECOND FLOOR PLAN (EAST)

NTS



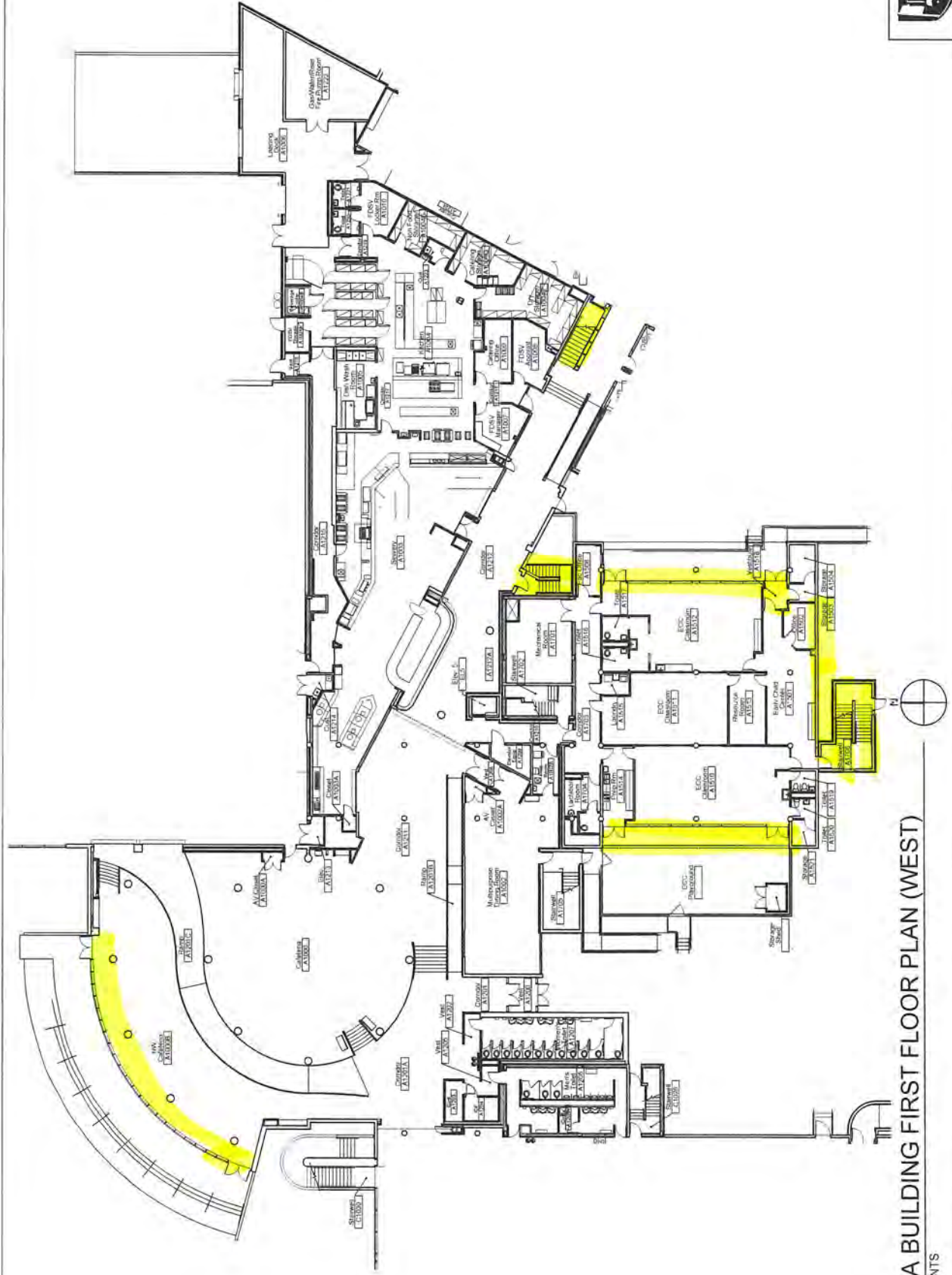
A-Building (Main Campus): The Contractor will wash:

- a. All exterior windows (campus center and child care)
- b. All interior windows (student street side only) 2<sup>nd</sup> & 3<sup>rd</sup> floors, including horizontal protruding accent glazing and 2<sup>nd</sup> floor crossover bridge domes (top only)
- c. All interior vestibule glass (campus center and child care)
- d. Cafeteria interior curved windows and doors
- e. All interior stairwell glass



A BUILDING FIRST FLOOR PLAN (EAST)

NTS



A BUILDING FIRST FLOOR PLAN (WEST)

NTS





A BUILDING SECOND FLOOR PLAN (EAST)

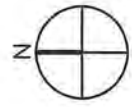
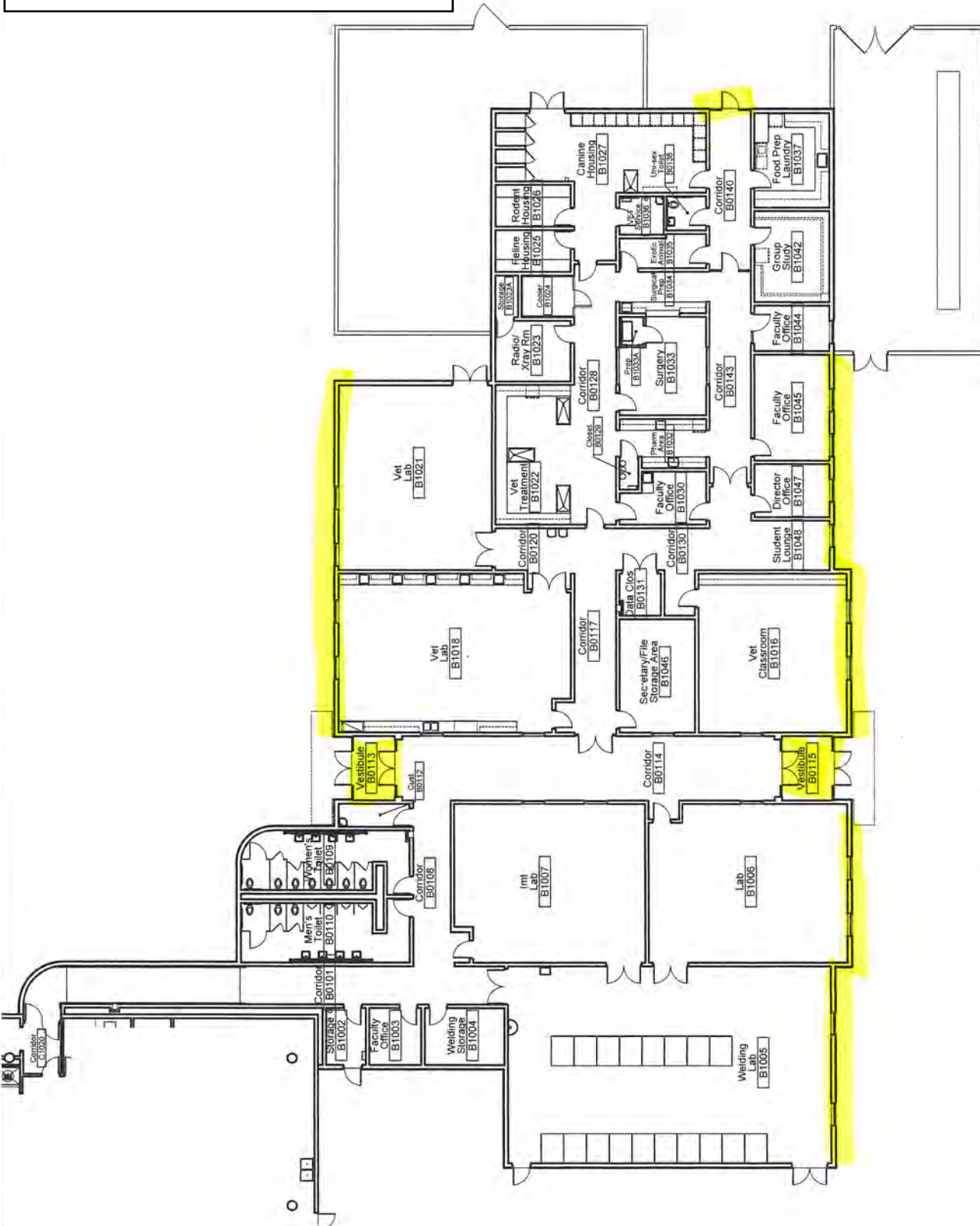
NTS





B-Building (Main Campus): The Contractor will wash:

- All exterior windows
- All interior vestibule glass



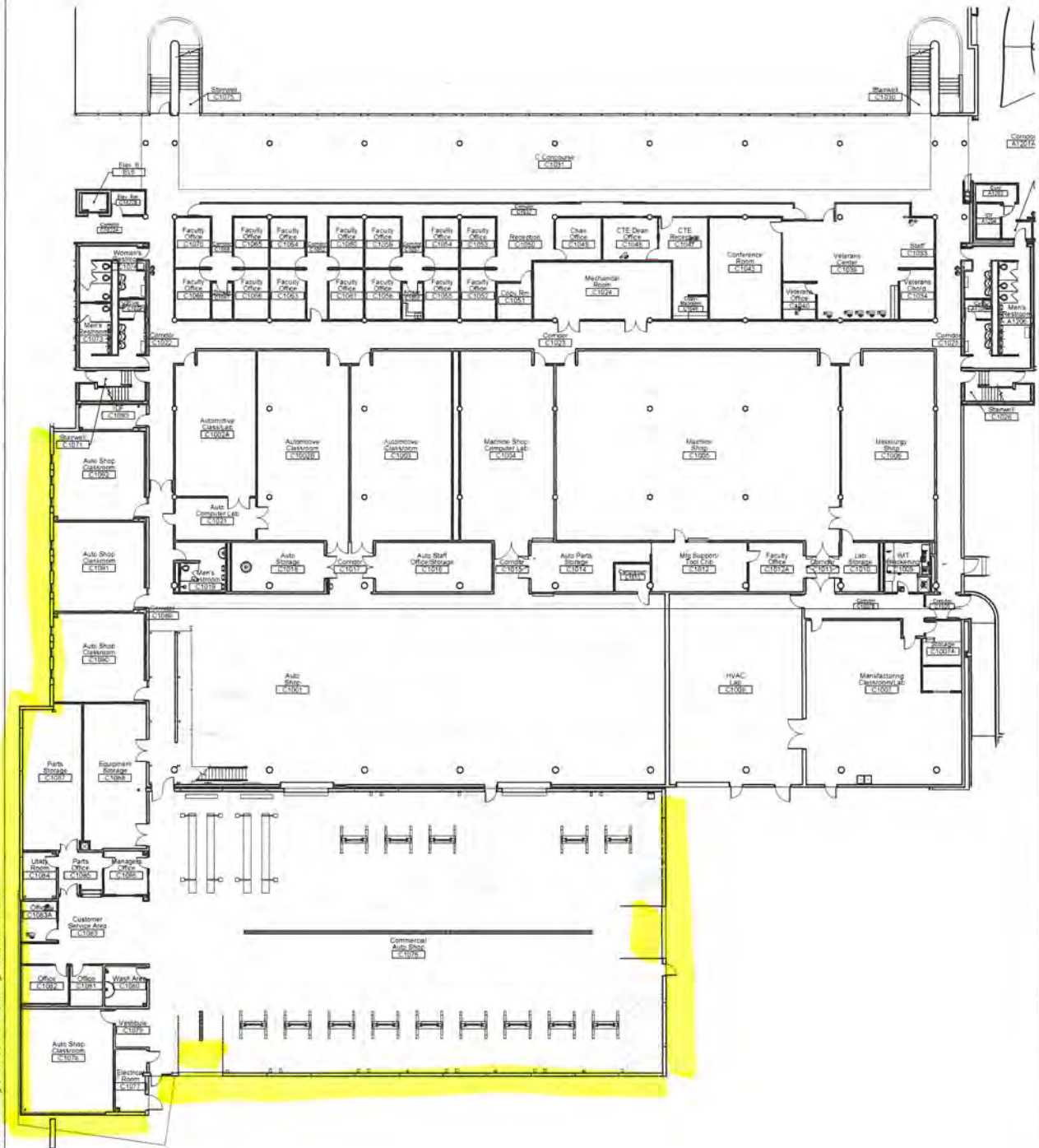
# B BUILDING FIRST FLOOR PLAN

NTS



C-Building (Main Campus): The Contractor will wash:

- All exterior windows
- EXCLUDING exterior concourse windows
- Interior and exterior of overhead garage doors



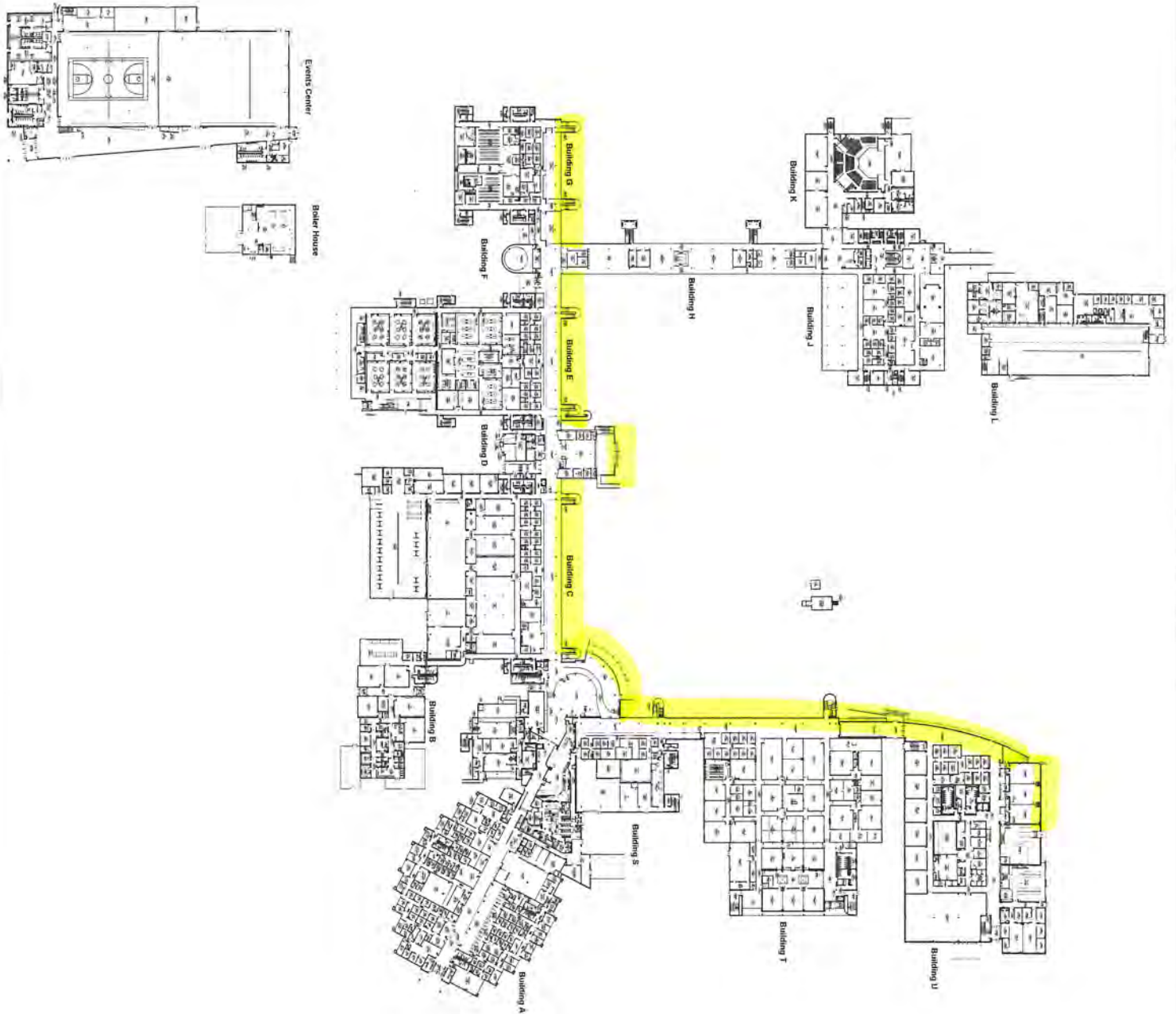
C BUILDING FIRST FLOOR PLAN  
NTS





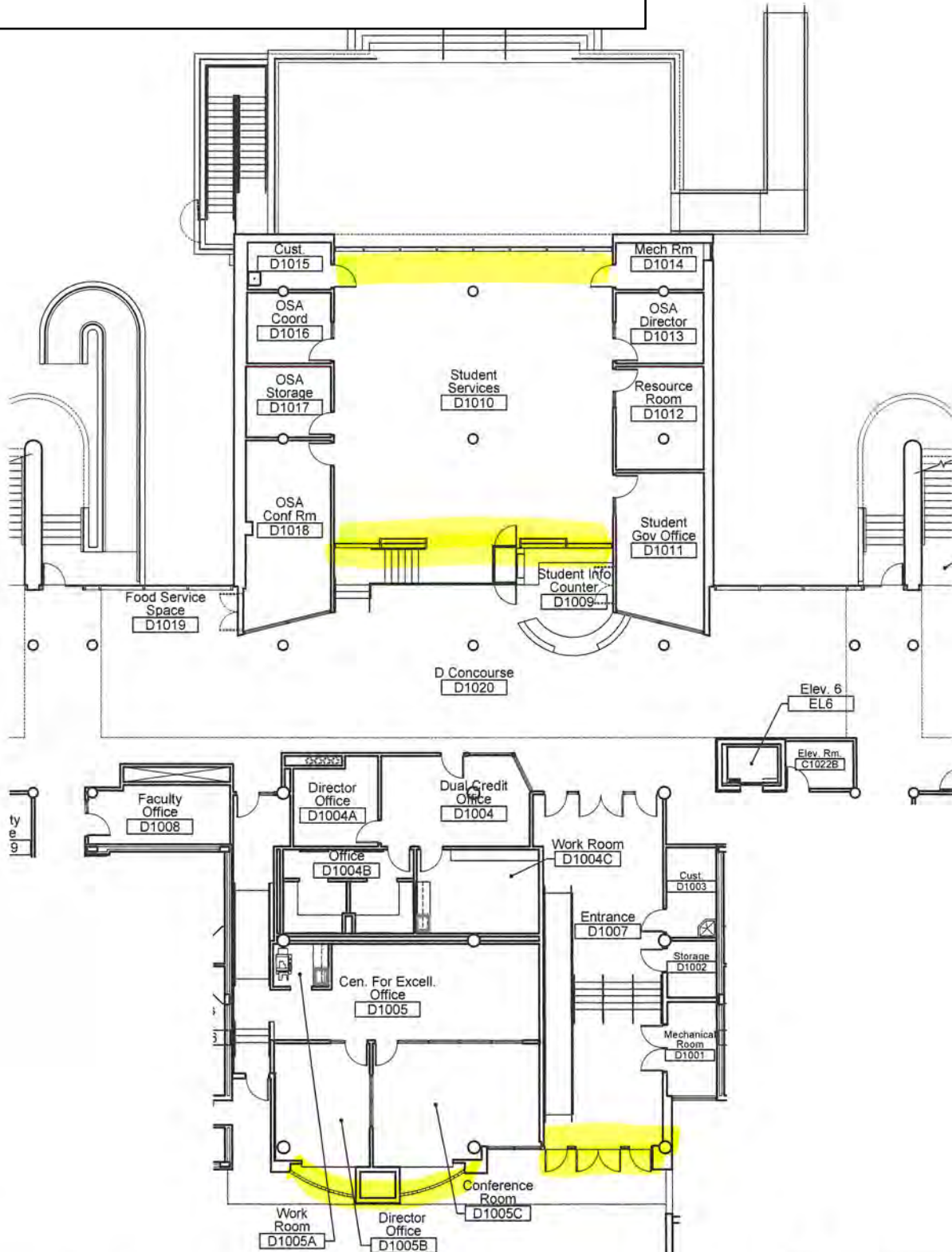
Concourse (Main Campus): The Contractor will wash:

- a. All exterior concourse windows for buildings A, C, D, E, F, G, S, T, & U  
U-building to include exterior Auditorium windows



D-Building (Main Campus): The Contractor will wash:

- All interior windows to office D-1010
- Exterior and interior exit doors and vestibule
- Exterior glass bricks
- EXCLUDING exterior D-1010 windows



## D BUILDING FIRST FLOOR PLAN

NTS

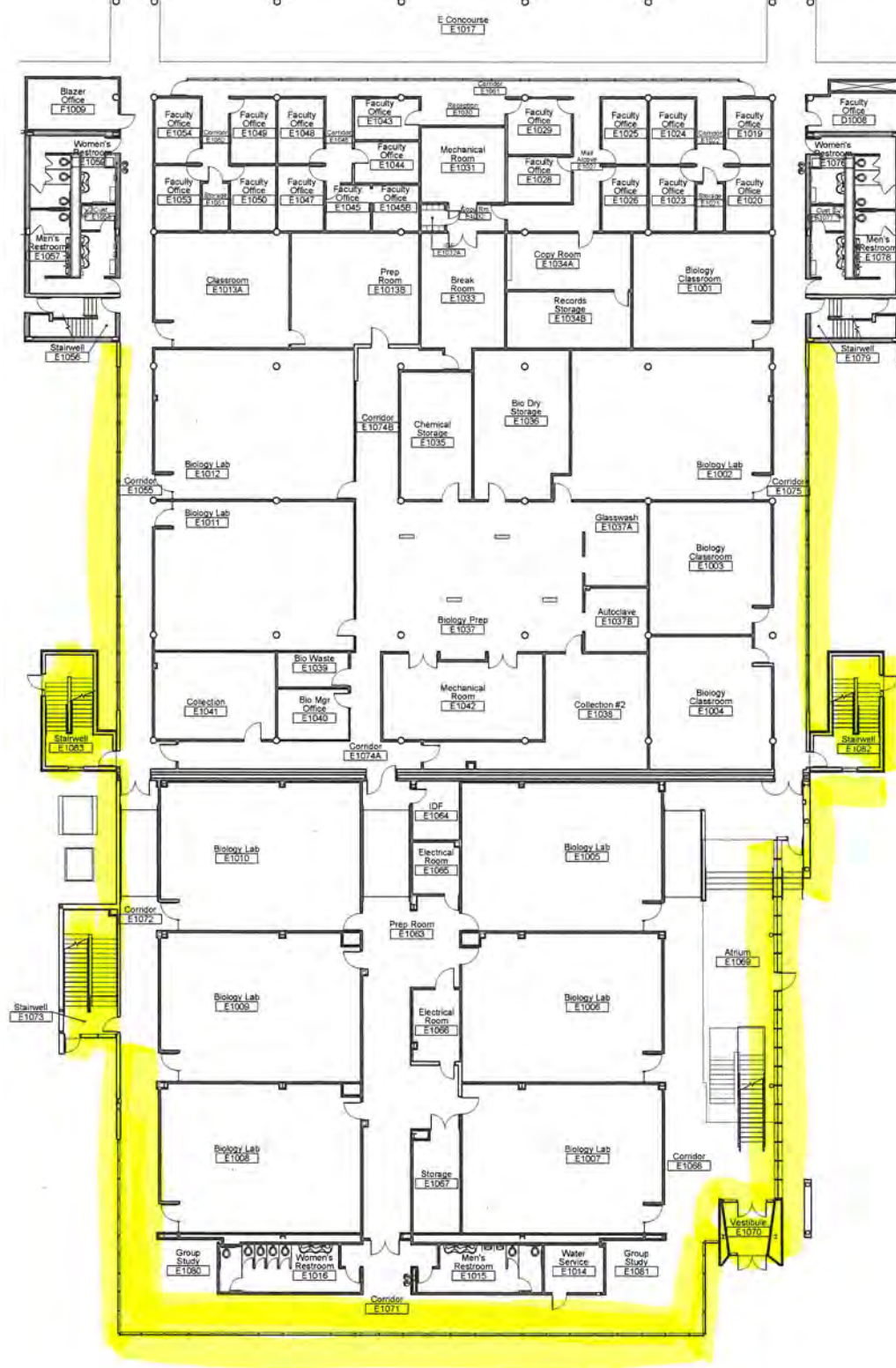


**JOLIET**  
JUNIOR COLLEGE  
1901-



E-Building (Main Campus): The Contractor will wash:

- a. All exterior windows
- b. EXCLUDING exterior concourse windows
- c. All interior windows main atrium and vestibule (1<sup>st</sup> and 2<sup>nd</sup> floor), south corridor 1<sup>st</sup> floor, west corridor 1<sup>st</sup> floor to stairwell, ESW stairwell, ECW stairwell, ECE stairwell



## E BUILDING FIRST FLOOR PLAN



- a. All exterior windows
- b. All entrance and interior vestibule windows
- c. Main concourse interior windows
- d. Conditioning rooms interior and concourse facing windows
- e. Rooms 2010, 2007, 2004, 2003, 2002, 2001 interior and hallway windows to include display cabinets
- f. Fieldhouse interior windows
- g. All interior stairwell windows



NTS







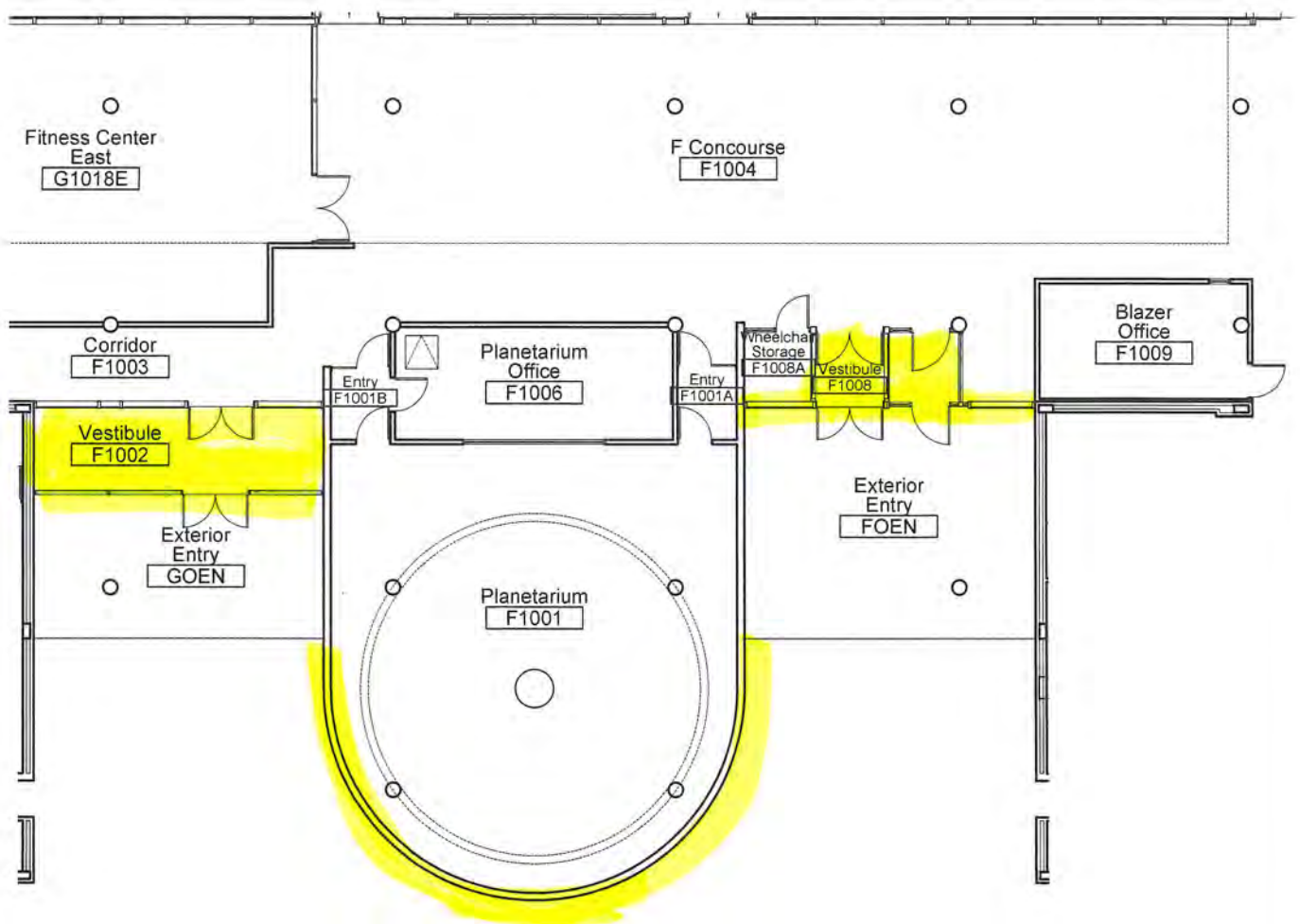
# G-Building & F-Building (Main Campus): The Contractor will wash:

## a. G-Building

- i. All interior Fitness Center windows
- ii. All exterior windows
- iii. EXCLUDING exterior concourse windows
- iv. Interior entrance and vestibule
- v. GSE and GSW interior stairwells

## b. F-Building

- i. All exterior windows/glass bricks
- ii. EXCLUDING exterior concourse windows
- iii. Interior entrance and vestibule

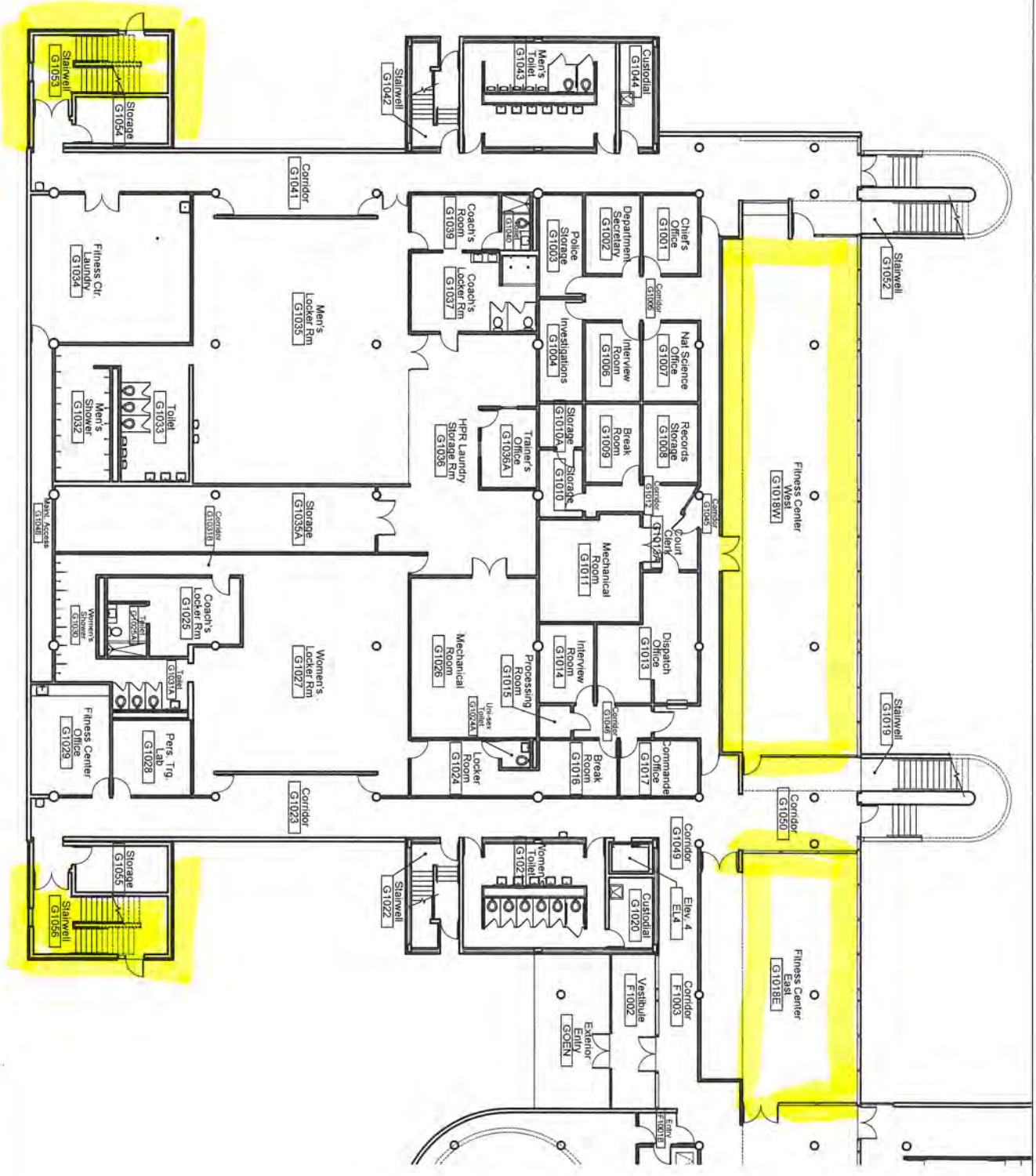


## F BUILDING FIRST FLOOR PLAN

NTS







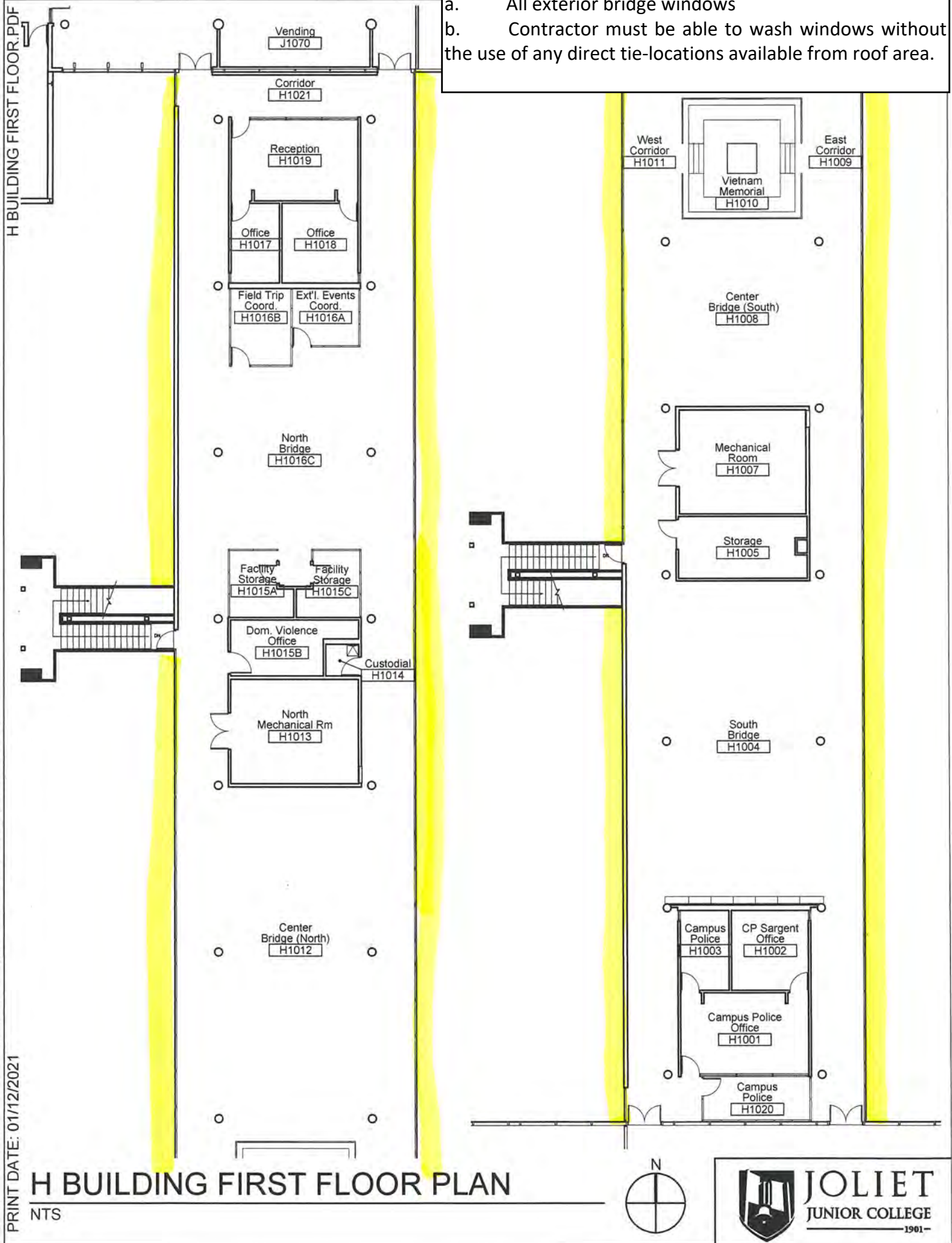
# G BUILDING FIRST FLOOR PLAN

NTS



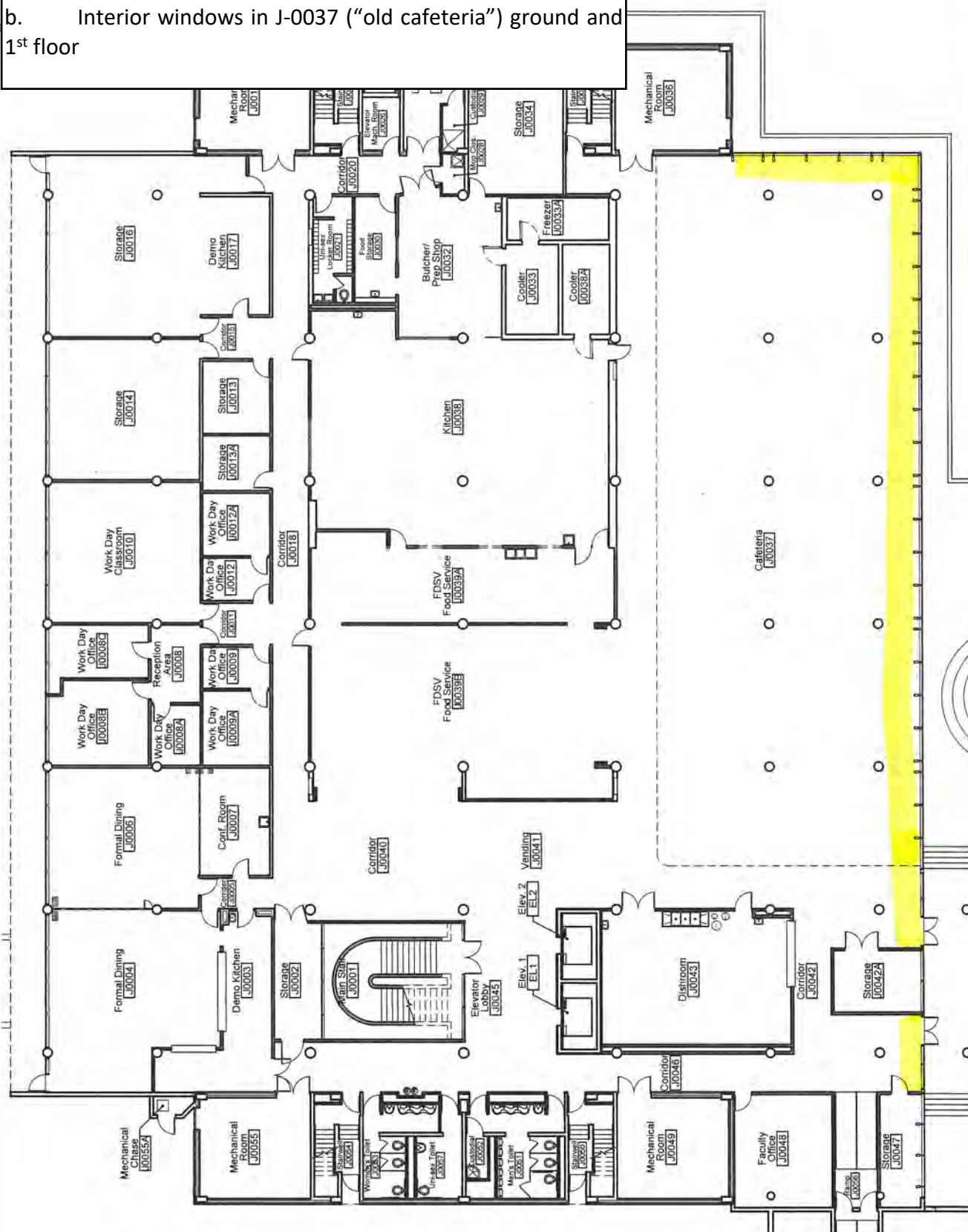
H-Bridge (Main Campus): The Contractor will wash:

- All exterior bridge windows
- Contractor must be able to wash windows without the use of any direct tie-locations available from roof area.





- a. All exterior windows accessible from ground, 2<sup>nd</sup> floor walk-outs and 3<sup>rd</sup> floor walk-outs
- b. Interior windows in J-0037 ("old cafeteria") ground and 1<sup>st</sup> floor



## J BUILDING GROUND FLOOR PLAN

WTS

## NTS





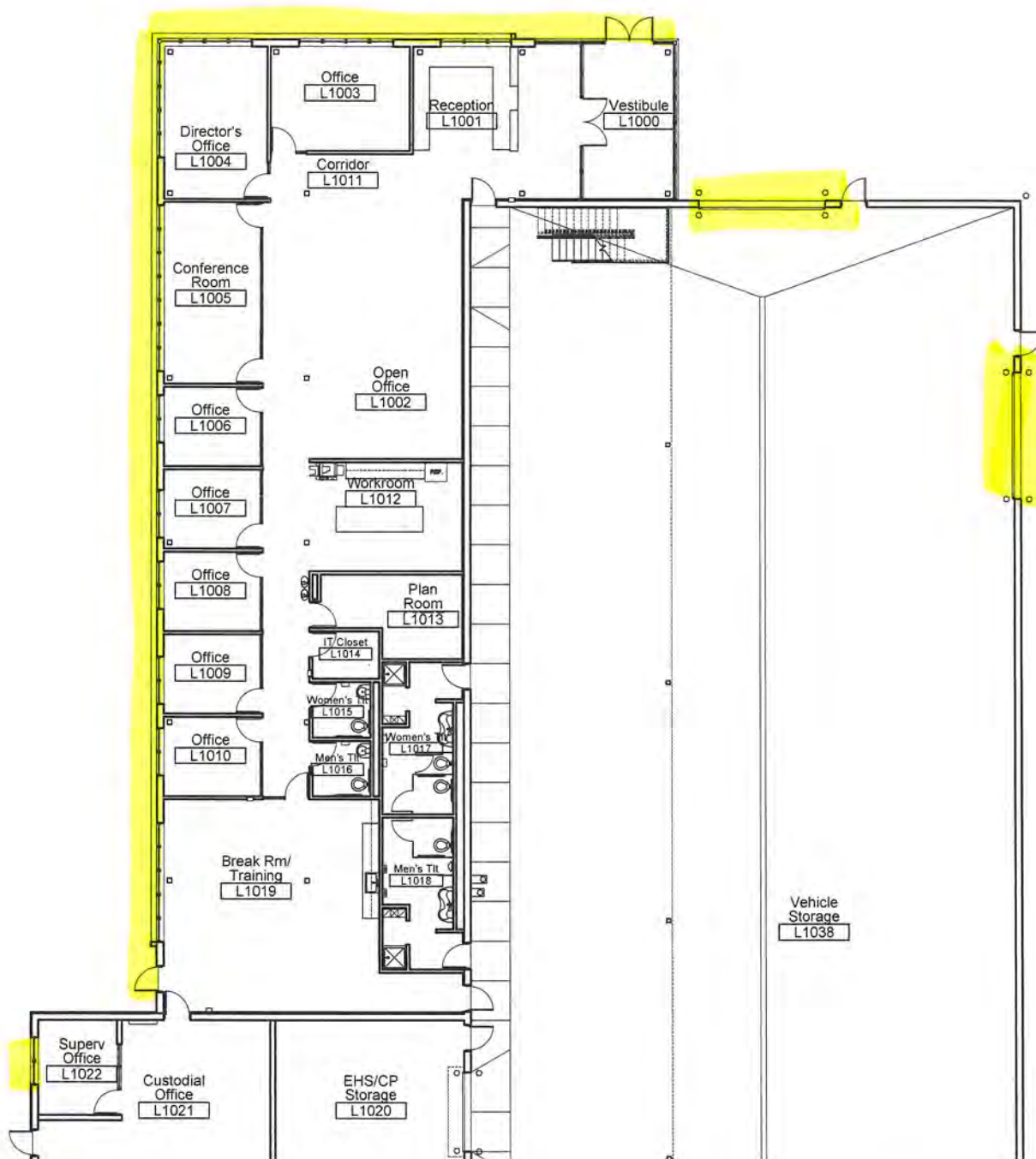
## NTS





L-Building (Main Campus): The Contractor will wash:

- All exterior windows
- Interior and exterior of overhead garage door windows

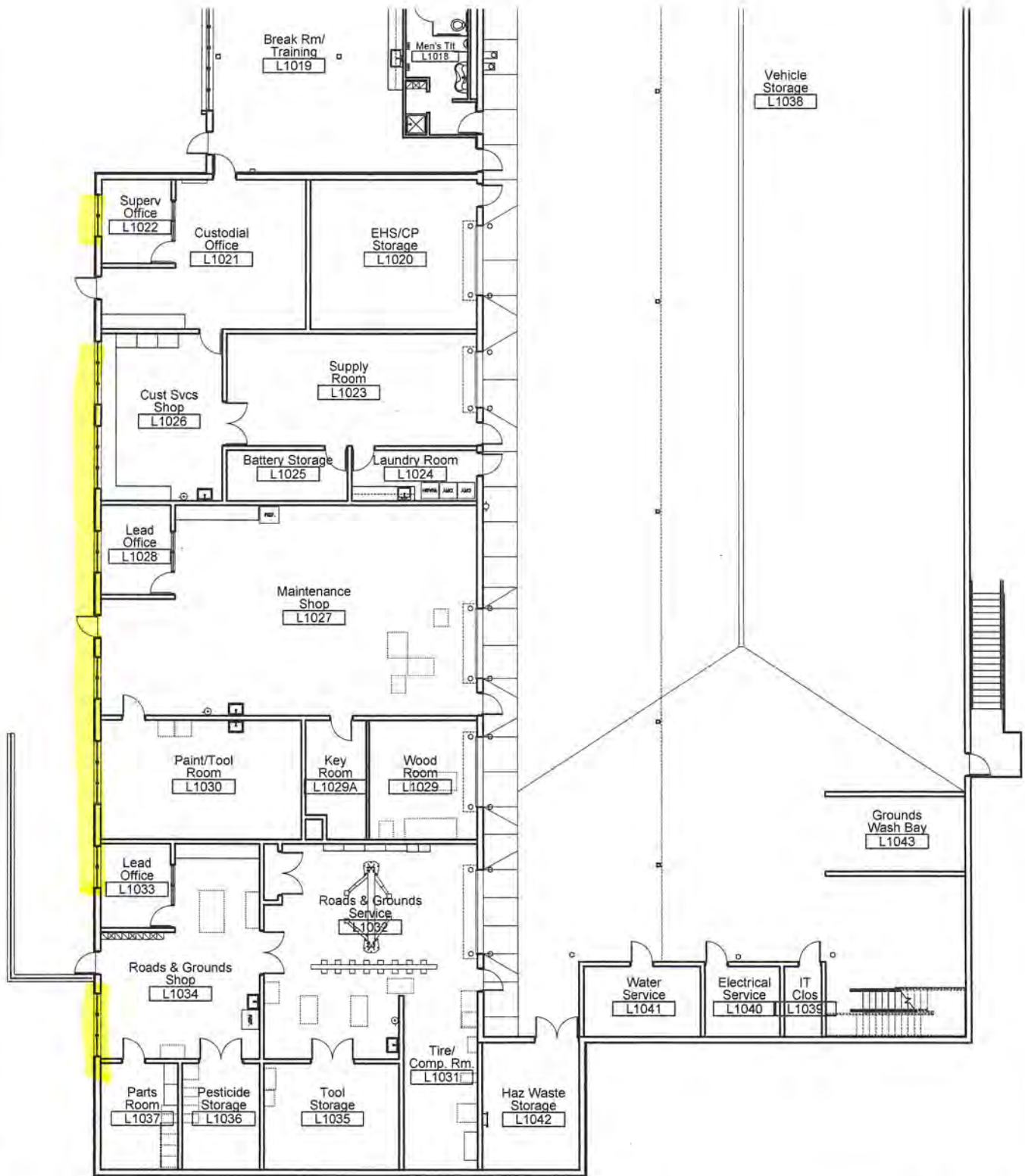


# L BUILDING FIRST FLOOR PLAN (NORTH)

NTS



**JOLIET**  
JUNIOR COLLEGE  
1901-

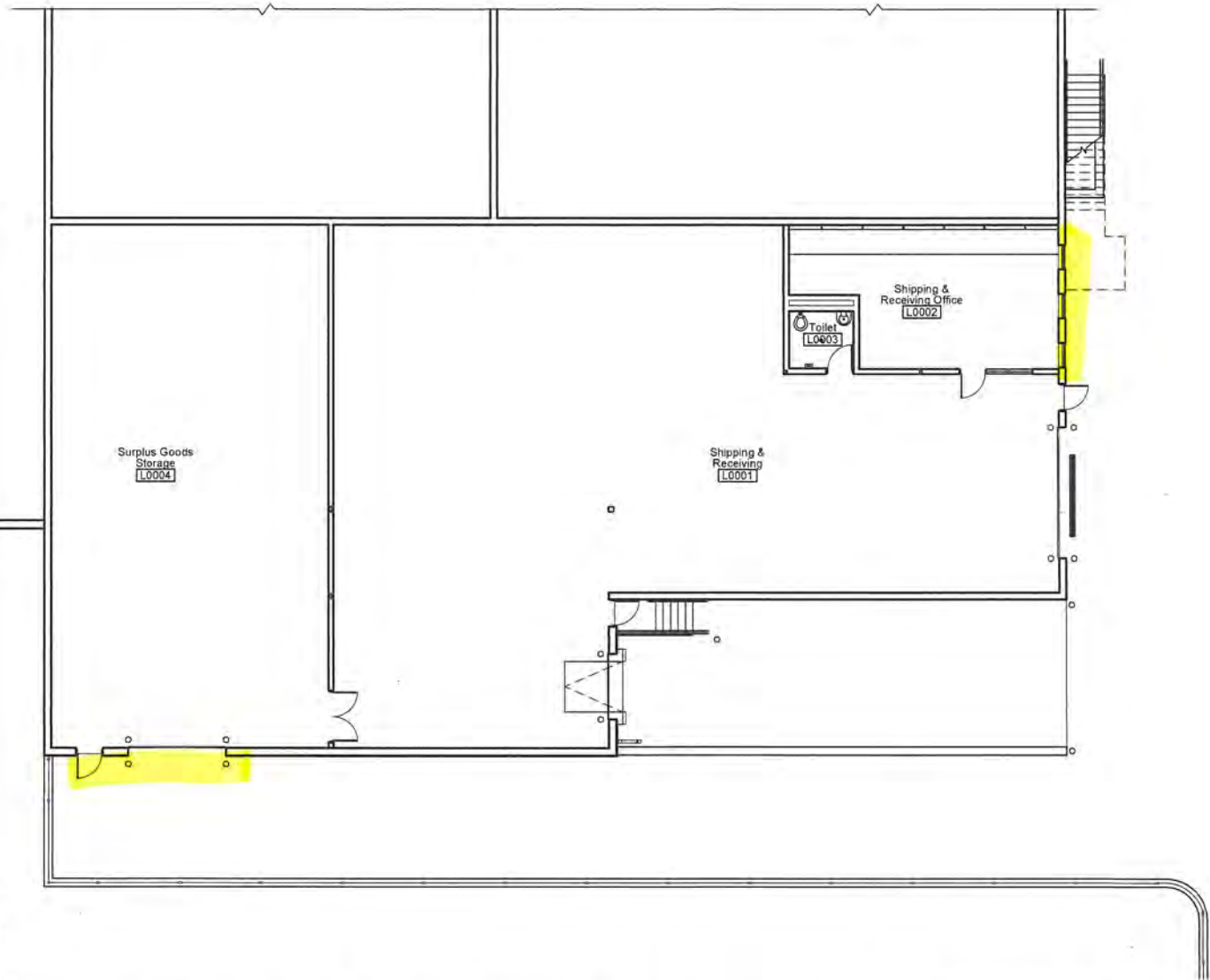


# L BUILDING FIRST FLOOR PLAN (SOUTH)

NTS



**JOLIET**  
JUNIOR COLLEGE  
1901-



# L BUILDING GROUND FLOOR PLAN

NTS





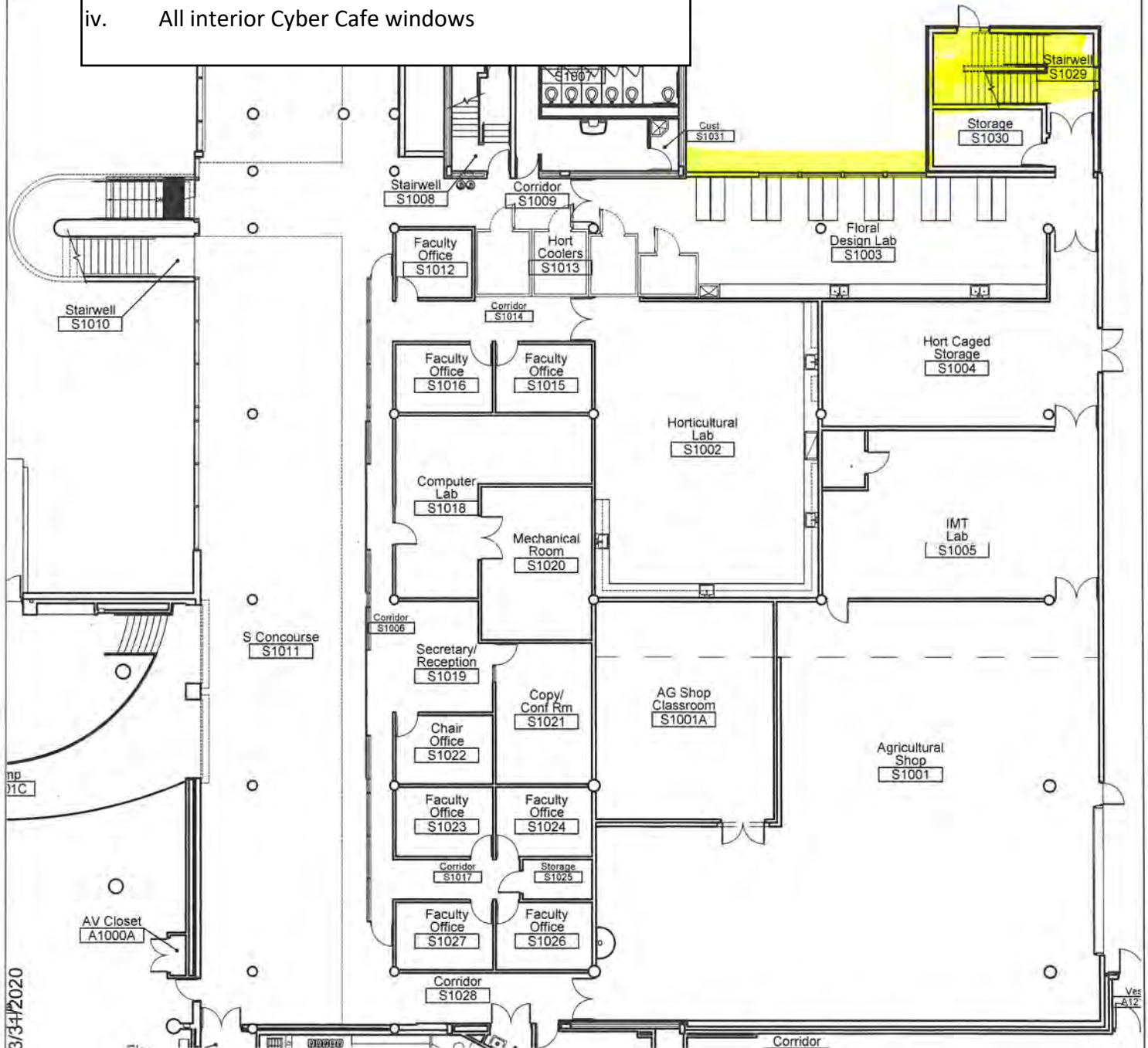
## S &amp; T-Buildings (Main Campus): The Contractor will wash:

## a. S-Building

- i. All exterior windows
- ii. EXCLUDING exterior concourse windows
- iii. Interior of SNE Stairwell

## b. T-Building

- i. All exterior windows
- ii. EXCLUDING exterior concourse windows
- iii. All interior Conference Center windows
- iv. All interior Cyber Cafe windows



## S BUILDING FIRST FLOOR PLAN

NTS



**JOLIET**  
JUNIOR COLLEGE  
—1901—

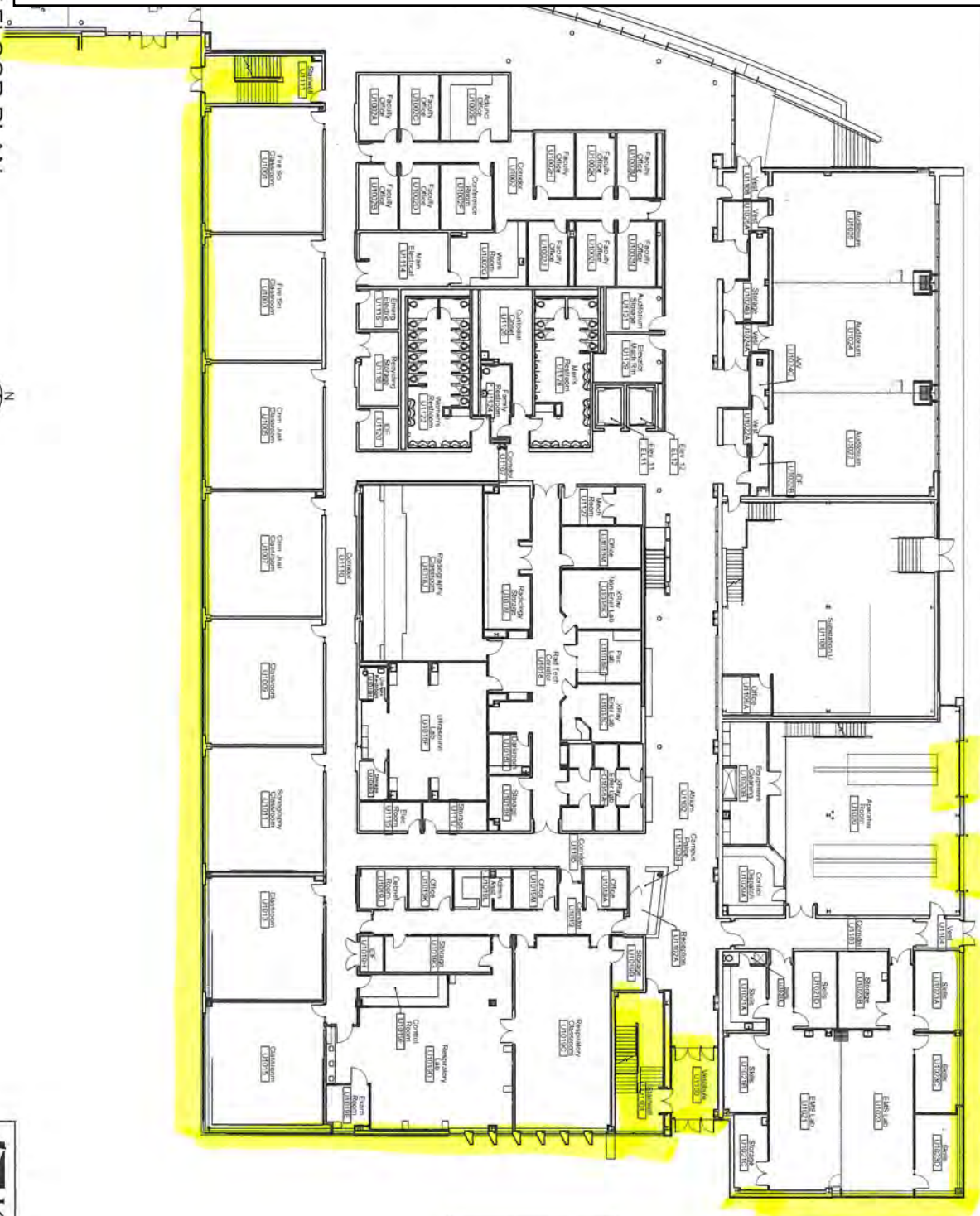
**T BUILDING FIRST FLOOR PLAN**



U-Building (Main Campus): The Contractor will wash:

- All exterior windows
- Interior vestibule entrance windows
- Interior UNE and USW stairwells
- EXCLUDING exterior concourse windows and U-auditorium exterior windows
- Interior and exterior overhead garage doors
- Interior windows to including U-auditorium (U-1022, U-1024 and U-1026)

NTS  
U BUILDING FIRST FLOOR PLAN





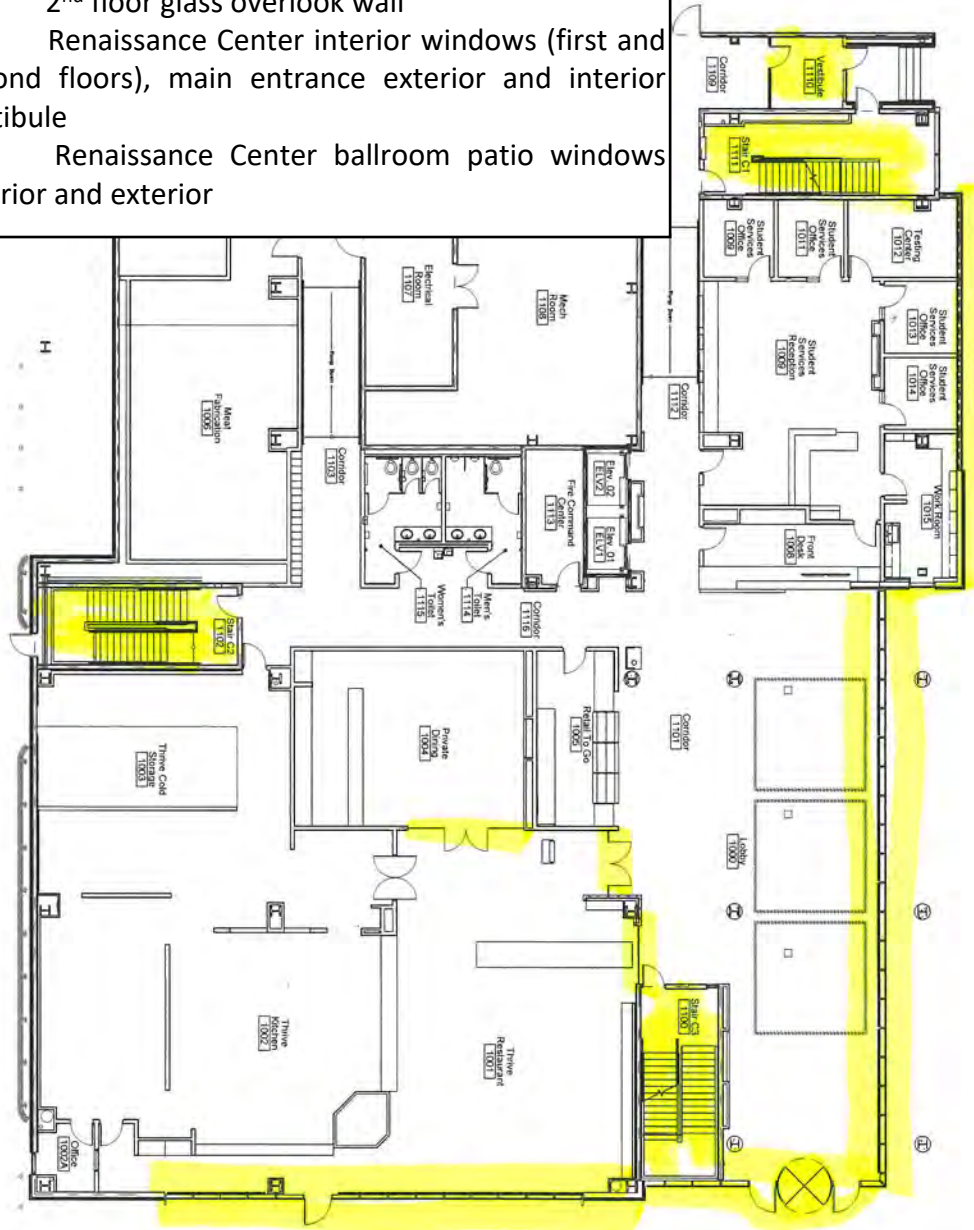
### U BUILDING THIRD FLOOR PLAN



NTS  
JCTR BUILDING FIRST FLOOR PLAN

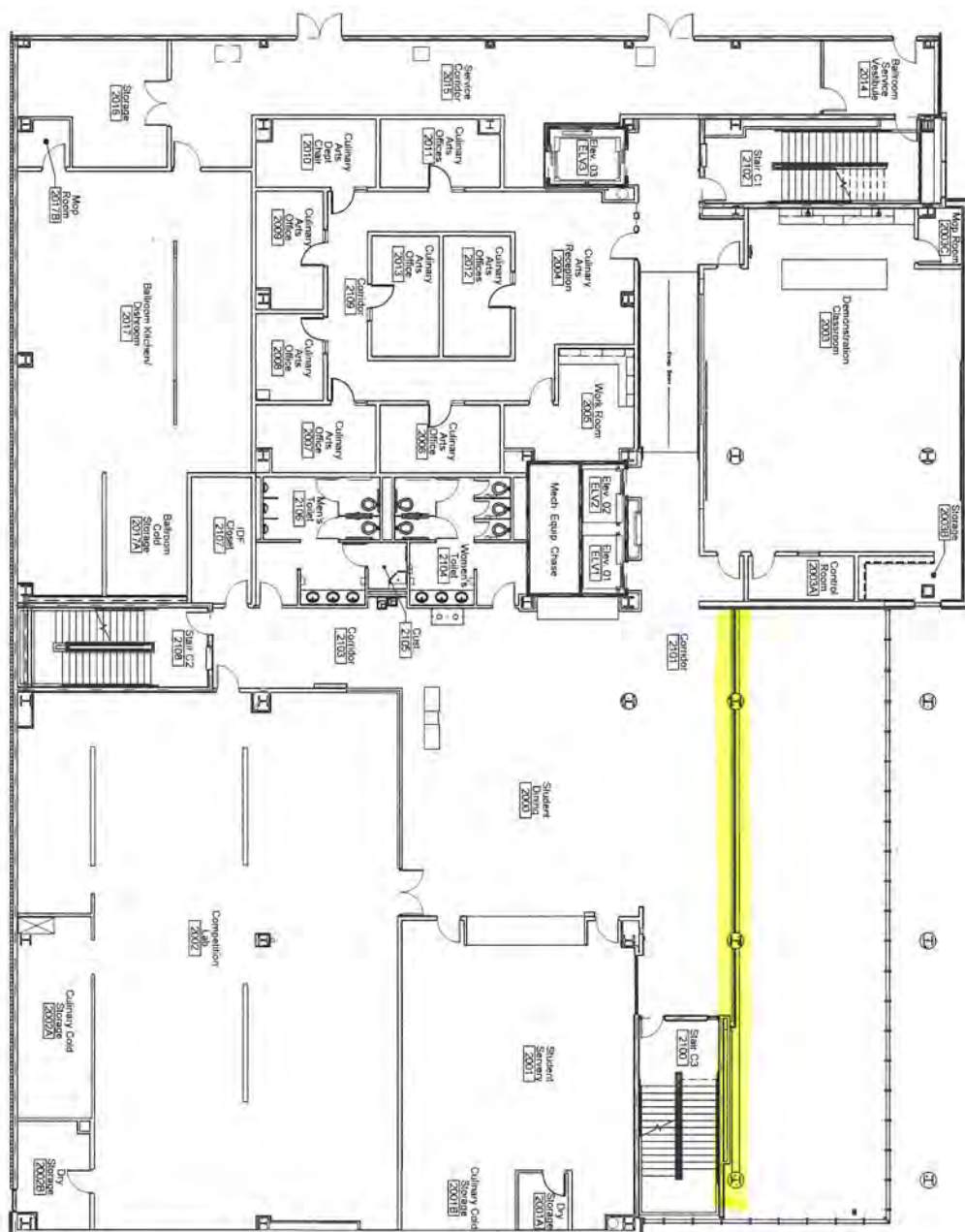


- Joliet City Center Campus: The Contractor will wash:
- All exterior windows
  - All stairwell interior windows (3)
  - Main lobby entrance and all interior windows
  - 1<sup>st</sup> floor dining entrance doors/windows, bar doors/windows, east Chicago St. interior windows
  - 2<sup>nd</sup> floor glass overlook wall
  - Renaissance Center interior windows (first and second floors), main entrance exterior and interior vestibule
  - Renaissance Center ballroom patio windows interior and exterior





## NTS

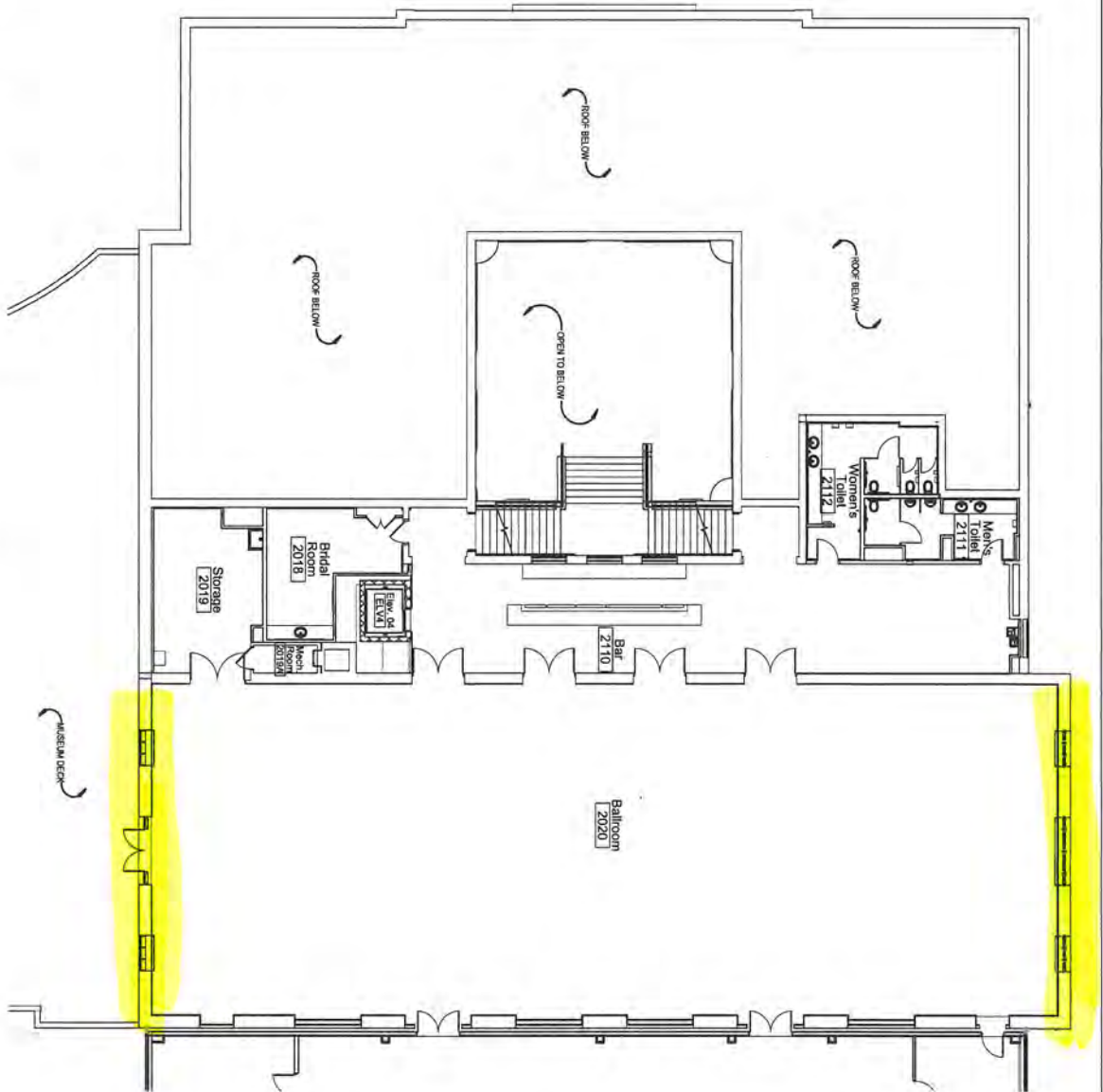


A circle with a horizontal radius line drawn from the center to the right edge, labeled with the letter 'r'.



RCEN BUILDING SECOND FLOOR PLAN

NTS





NTS  
RM ALL BUILDING'S FIRST FLOOR PLAN

Romeoville Campus: The Contractor will wash:

RMA

- i. All exterior windows
- ii. Cafateria and Multipurpose interior windows
- iii. Interior public area windows, 1<sup>st</sup> and 2<sup>nd</sup> floor
- iv. All interior entrance windows and vestibule
- v. All interior stairwell windows

RMA - 1st Floor

RMB:

- i. All exterior windows
- ii. Interior windows to include Student Lounge, Library, RMB-1002, RMB-1004, RMB-1006, RMB-1005, RMB-1008, RMB-1008A and all entrance and vestibule glass

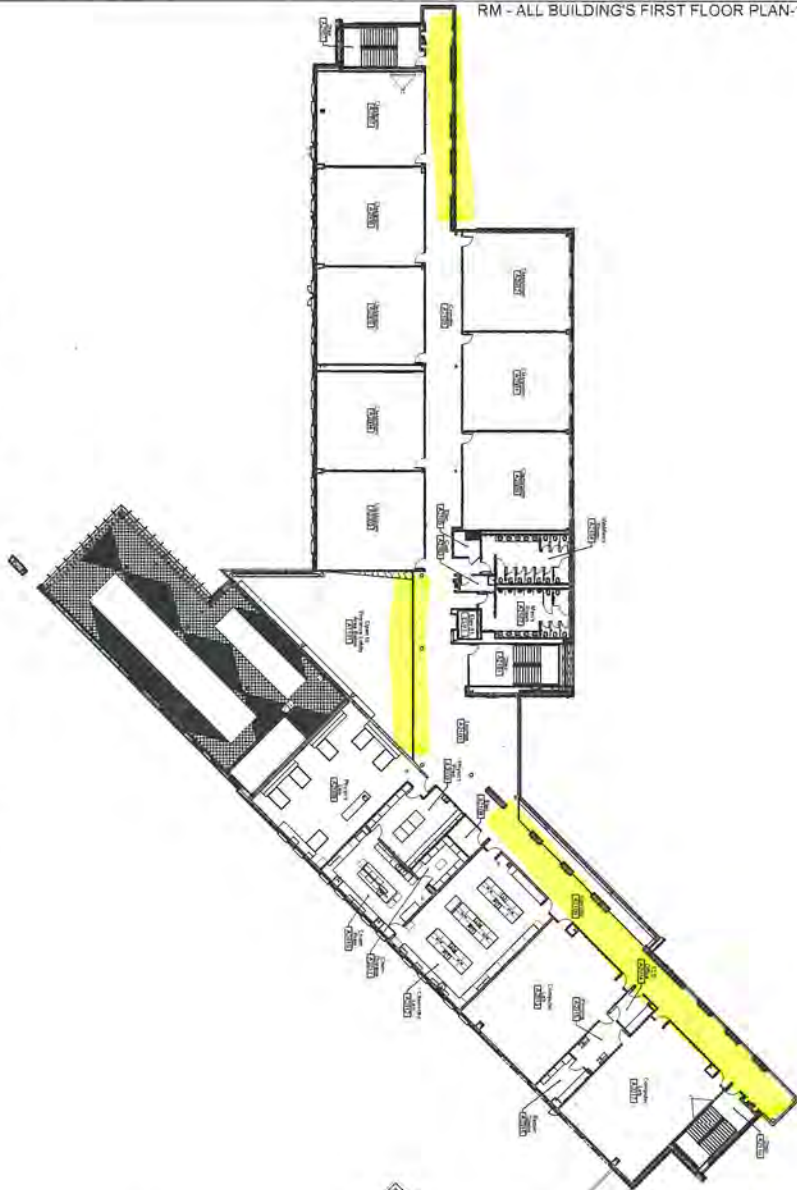
Romeoville - RMB - 1st Floor

RM ALL BUILDING'S SECOND FLOOR PLAN

NTS



Romeoville - RMA - 2nd Floor



Romeoville - RMB - Roof

