

10. ARCHITECT SHALL BE NAMED AS ADDITIONAL INSURED ON ALL REQUIRED INSURANCE POLICIES.

3. GENERAL CONTRACTOR TO PROVIDE A \$7,500 ALLOWANCE IN HIS/HER BID FOR UNFORESEEN/MISCELLANEOUS CONDITIONS. WHEN FIGURING THIS ALLOWANCE IN THE BID, CONTRACTOR IS TO INCLUDE ALL NECESSARY OVERHEAD AND PROFIT. THIS ALLOWANCE IS NOT FOR THE CONTRACTOR'S BENEFIT, AND IS ONLY AUTHORIZED TO CHARGE AGAINST THIS ALLOWANCE WHEN DIRECTED AND APPROVED BY JOLIET JUNIOR COLLEGE. THE CONTRACTOR WILL BE ALLOWED TO INVOICE FOR MATERIAL AND RAW LABOR COST ONLY.

A	- AT	EXP	- EXPANSION	PL	- PLATE
ABR	- ANCHOR BOLT	EXP CONST	- EXPOSED CONSTRUCTION	PL LAM	- PLASTIC LAMINATE
AT-(1)	- ABRASIVE	FD	- FLOOR DRAIN	PL	- PLASTER
APF	- ACOUSTIC TILE CEILING (TYPE)	FDN	- FOUNDATION	PLB'G	- PLUMBING
AFG	- ABOVE FINISH FLOOR	FE	- FIRE EXTINGUISHER	PLB'G CONTR	- PLUMBING CONTRACTOR
ACOUS	- ABOVE FINISH GRADE	FEC	- FIRE EXTINGUISHER CABINET	PLYWD	- PLYWOOD
ADDN	- ACOUSTIC	FHC	- FIRE HOSE CABINET	PNT	- PAINT
ADDL	- ADDITION	FIN	- FINISH	PVC	- POLYVINYL CHLORIDE
ADJ	- ADDITIONAL	FLR	- FLOOR	PL-(1)	- GYPSUM PLASTER (TYPE)
ADJ	- ADJACENT	FRT	- FIRE RETARDANT TREATED (RATED)	R OR RAD	- RADIUS
ADJUST	- ADJUSTABLE	FUR CHN'L	- FURRING CHANNEL	R	- RISE
AL	- ALUMINUM	FTG	- FOOTING	RO	- ROOF DRAIN
ALT	- ALTERNATE	GA	- GAUGE	RO	- ROUGH OPENING
ANCH	- ANCHOR	GALV	- GALVANIZED	RF (1)	- RUBBER FLOORING (TYPE)
AP	- ACCESS PANEL	GEN CONTR	- GENERAL CONTRACTOR	RH	- RIGHT HAND
APPROX	- APPROXIMATE	GC	- GENERAL CONTRACTOR	REF	- REFERENCE
ASPH	- ASPHALT	GL	- GLASS	REIN	- REINFORCING
AUTO	- AUTOMATIC	GYP DB-(1)	- GYPSUM WALL BOARD (DRYWALL)(TYPE)	REQ'D	- REQUIRED
AVG	- AVERAGE	GYP PL-(1)	- GYPSUM PLASTER (TYPE)	RM	- ROOM
BSMT	- BASEMENT	H	- HIGH	SF	- SQUARE FOOT
BD	- BOARD	HD	- HEAVY DUTY	SI	- SQUARE INCH
BITUM	- BITUMINOUS/BITUMASTIC	HD	- HARD	SINK	- SINK
BLDG	- BUILDING	HDR	- HARDENER	SS	- STAINLESS STEEL
BLK'G	- BLOCKING (WOOD)	HD WD-(1)	- HARD WOOD (TYPE)	SSK	- SERVICE SINK
BW	- BEAM	HDWR	- HARDWARE	SO	- SQUARE
B.M.	- BENCH MARK	HGT	- HEIGHT	SCHED	- SCHEDULE
BT STL PL	- BENT STEEL PLATE	HM	- HOLLOW METAL	SEAL/HDRN	- SEALER/HARDENER
BRG	- BEARING	HP	- HIGH POINT	SEC	- SECTION
BRKT	- BRACKET	HORIZ	- HORIZONTAL	SHT	- SHEET
BRK	- BRICK	HTG	- HEATING	SM	- SIMILAR
BTM	- BOTTOM	HVAC	- HEATING/VENTILATING/AIR CONDITIONING	SOG	- SLAB ON GRADE
BTWN	- BETWEEN	INCH	- INCH	SPEC	- SPECIFICATION(S)
CJ	- CONSTRUCTION/CONTRACTION JOINT	ID	- INSIDE DIAMETER	SPC'G	- SPACING
CAB	- CABINET	INCLUDE (D)	- INCLUDE (D)	SPK'R	- SPEAKER
CEM PL-(1)	- CEMENT PLASTER (TYPE)	INSUL	- INSULATION OR INSULATING	STN	- STIN
CT PLAV-(1)	- CERAMIC PAVET TILE (TYPE)	JT	- JOINT	STD	- STANDARD
QIPC	- CAST- IN- PLACE CONCRETE	KD	- KNOCK DOWN	STD WGT	- STANDARD WEIGHT
CLG	- CEILING	L	- LONG	STL	- STEEL
CLR	- CLEAR	LAM	- LAMINATED	STRUCT	- STRUCTURAL OR STRUCTURE
CO	- CLEAN OUT	LAV	- LAVATORY	SUSP	- SUSPENDED
CMU	- CONCRETE MASONRY UNIT	LH	- LEFT HAND	SYMM	- SYMMETRICAL
COL	- COLUMN	LP	- LOW POINT	TREAD	- TREAD
COMB	- COMBINATION	LGT WGT	- LIGHTWEIGHT	T&G	- TONGUE AND GROOVE
COMP	- COMPRESSION	LL	- LIVE LOAD	T/B	- TOP OF BEAM
COMPTD	- COMPACTED	LLH	- LONG LEG HORIZONTAL	T/C	- TOP OF CURB
CONC	- CONCRETE	LLV	- LONG LEG VERTICAL	T/F	- TOP OF FOUNDATION
CONC OPNG	- CONCRETE OPENING	LVR	- LOUVER	T/S	- TOP OF SLAB
COND	- CONDITION	MO	- MASONRY OPENING	T/STL	- TOP OF STEEL
CONT	- CONTINUOUS	MT	- METAL THRESHOLD	T/W	- TOP OF WALL
CONTR	- CONTRACT (OR)	MAS'Y	- MASONRY	TB (4)	- TACKBOARD (LENGTH)
CPT-(1)	- CARPET (TYPE)	MAT'L	- MATERIAL	TM	- TOP OF MASONRY
CT-(1)	- CERAMIC TILE (TYPE)	MAX	- MAXIMUM	TYP	- TYPICAL
CTR	- COUNTER	MB-(16)	- MARKERBOARD- (LENGTH)	UNO	- UNLESS NOTED OTHERWISE
CTR SK	- COUNTER SINK	MECH	- MECHANICAL	VBC	- VINYL BASE COVERED
CTS	- CENTER(S)	MECH CONTR	- MECHANICAL CONTRACTOR	VBS	- VINYL BASE STRAIGHT
CUH	- CABINET UNIT HEATER	MFR	- MANUFACTURER	VCT	- VINYL COMPOSITION TILE
CUV	- CABINET UNIT VENTILATOR	MIN	- MINIMUM	VEN PL (1)	- VENER PLASTER (TYPE)
DIA	- DIAMETER	MISC	- MISCELLANEOUS	VERT	- VERTICAL
DIM	- DIMENSION	MSB	- MOP SERVICE BASIN (SINK)	W	- WIDE OR WIDTH
DN	- DOWN	MT(D)	- MOUNT(ED)	W/	- WITH
DR	- DOOR	MTL	- METAL	W/O	- WITHOUT
DWG'S	- DRAWINGS	NIC	- NOT IN CONTRACT	WCG	- WALL CORNER GUARD
DTL	- DETAIL	NOM	- NOMINAL	WO	- WOOD
DWL'S	- DOWELS	NTS	- NOT TO SCALE	WDN	- WINDOW
E	- EACH	NO	- NUMBER	WGT	- WEIGHT
EJ	- EXPANSION JOINT	OA	- OVERALL	WP	- WATER PROOF
EL	- ELEVATION	OC	- ON CENTER	WWF	- WELDED WIRE FABRIC
ELEC	- ELECTRIC/ELECTRICAL	OD	- OUTSIDE DIAMETER	WSB	- WALL SERVICE BASIN
ELEC CONTR	- ELECTRICAL CONTRACTOR	OF	- OUTSIDE FACE		
ELEV	- ELEVATOR	OPN'G	- OPENING		
EMBED	- EMBEDMENT	OPP	- OPPOSITE		
EMER	- EMERGENCY	OPP HD	- OPPOSITE HAND		
EP PNT	- EPOXY PAINT	PSF	- POUNDS PER SQUARE FOOT		
EQ	- EQUAL	PSI	- POUNDS PER SQUARE INCH		
EW	- EACH WAY	PT	- PRESSURE TREATED		
EWG	- ELECTRIC WATER COOLER	PN	- PARTITION		
EWI	- ELECTRIC WATER HEATER	PAVT	- PAVEMENT		
EP-(26)	- EXHIBIT RAIL (LENGTH)	PC	- PIECE		
EXIST	- EXISTING	PEM	- PERMANENT FLOOR MAT		

	UNDISTURBED EARTH
---	-------------------

**www.kluberinc.com**

KLUBER, INC. ILLINOIS PROFESSIONAL  
DESIGN FIRM LICENSE #184-001284

ARCHITECT'S SEAL
---------------------

"G" SERIES  
"M" SERIES

MECHANICAL ENGINEER'S SEAL

"G" SERIES  
"M" SERIES

ELECTRICAL ENGINEER'S SEAL	

"G" SERIES  
"E" SERIES

NOTE: SCALES DEPICTED ON THIS DRAWING ARE NOT CORRECT UNLESS PLOTTED SHEET SIZE IS 30 X 42 INCHES

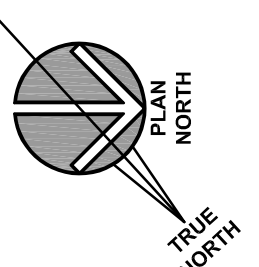


COMPUTER ROOM A/C SCHEDULE											
CAP (T)	TOTAL CAP (MBH)	COIL ROWS/ FACE VEL (IN WG)	REHEAT CAPACITY (KW)	FILTER TYPE EFFICIENCY (MERV)	SUPPLY FAN (HP)	EXTERNAL STATIC PRESS (IN WG)	ELECTRICAL		MODEL	AREA SERVED	NOTES
							V/PHHZ	MCA			
	51.0	4/ 320	6.0	8	1.0	0.5	460/3/60	15.5	DAPA-04	ROOM 107	1

## KEYNOTES

KEYNOTES ARE TYPICALLY NOT DUPLICATED WITHIN A GIVEN DETAIL.  
AN UN-KEYNOTED ITEM IN A DETAIL IS THE SAME AS A KEYNOTED  
ITEM HAVING THE SAME APPEARANCE WITHIN THE SAME DETAIL.

## KEY PLAN

[illegible]

OB NO.	18-292-1391
DRAWN	BWG
CHECKED	DDW
APPROVED	DDW

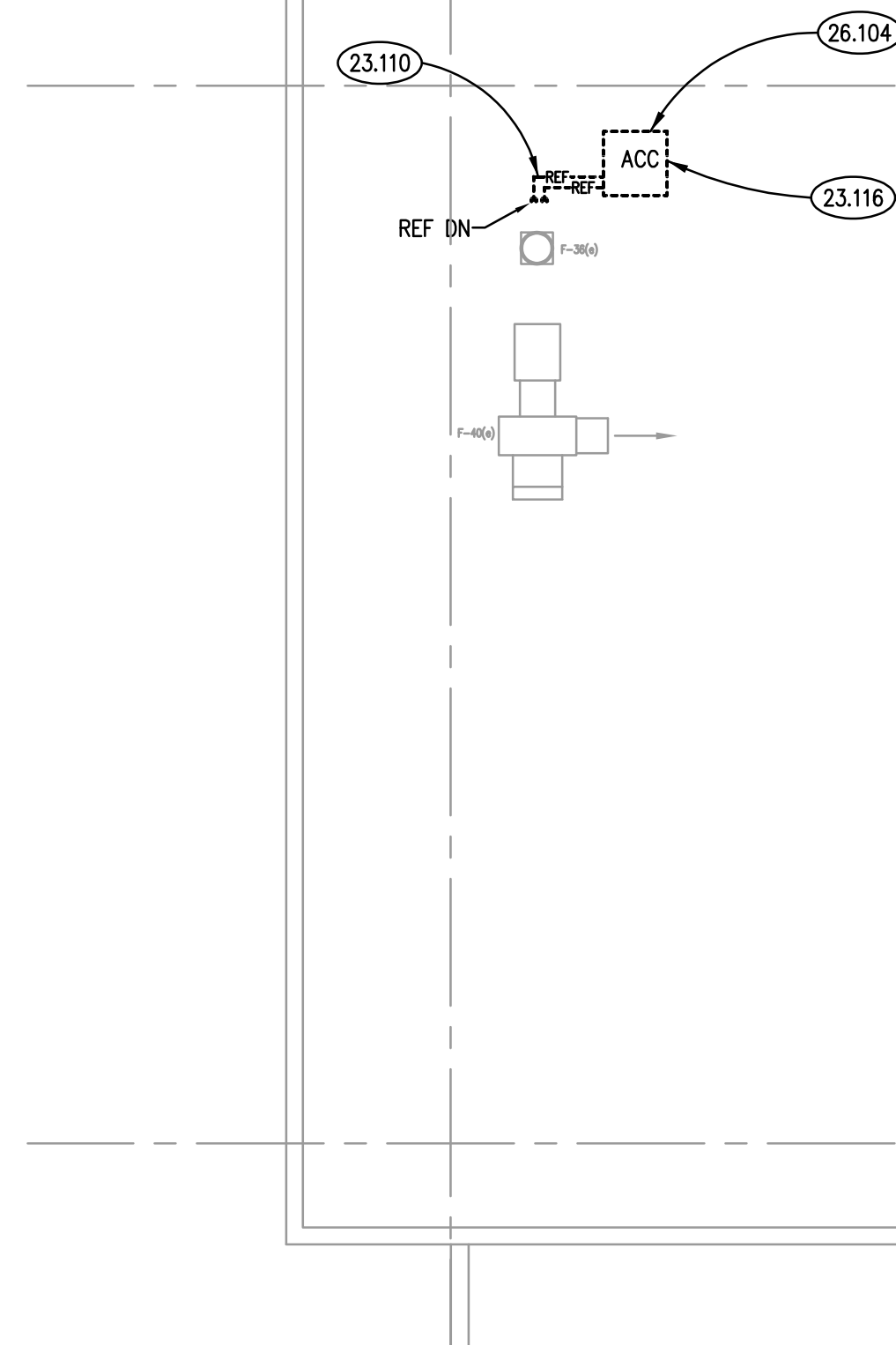
SHEET TITLE									
-------------	--	--	--	--	--	--	--	--	--

MECHANICAL PLANS -  
DOMEVILLE CAMPUS

SHEET NUMBER

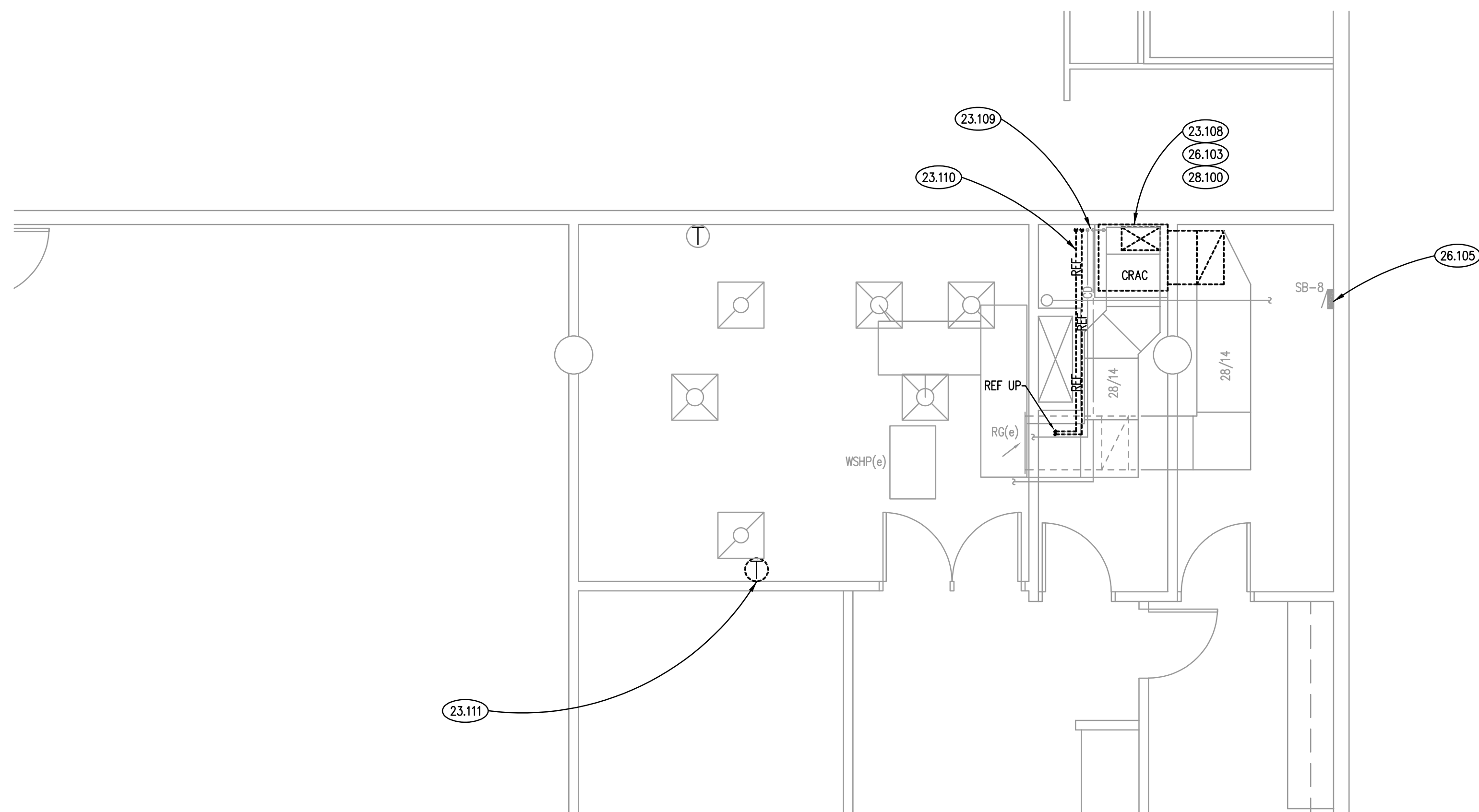
# M310




**PARTIAL ROOF MECHANICAL DEMOLITION PLAN**

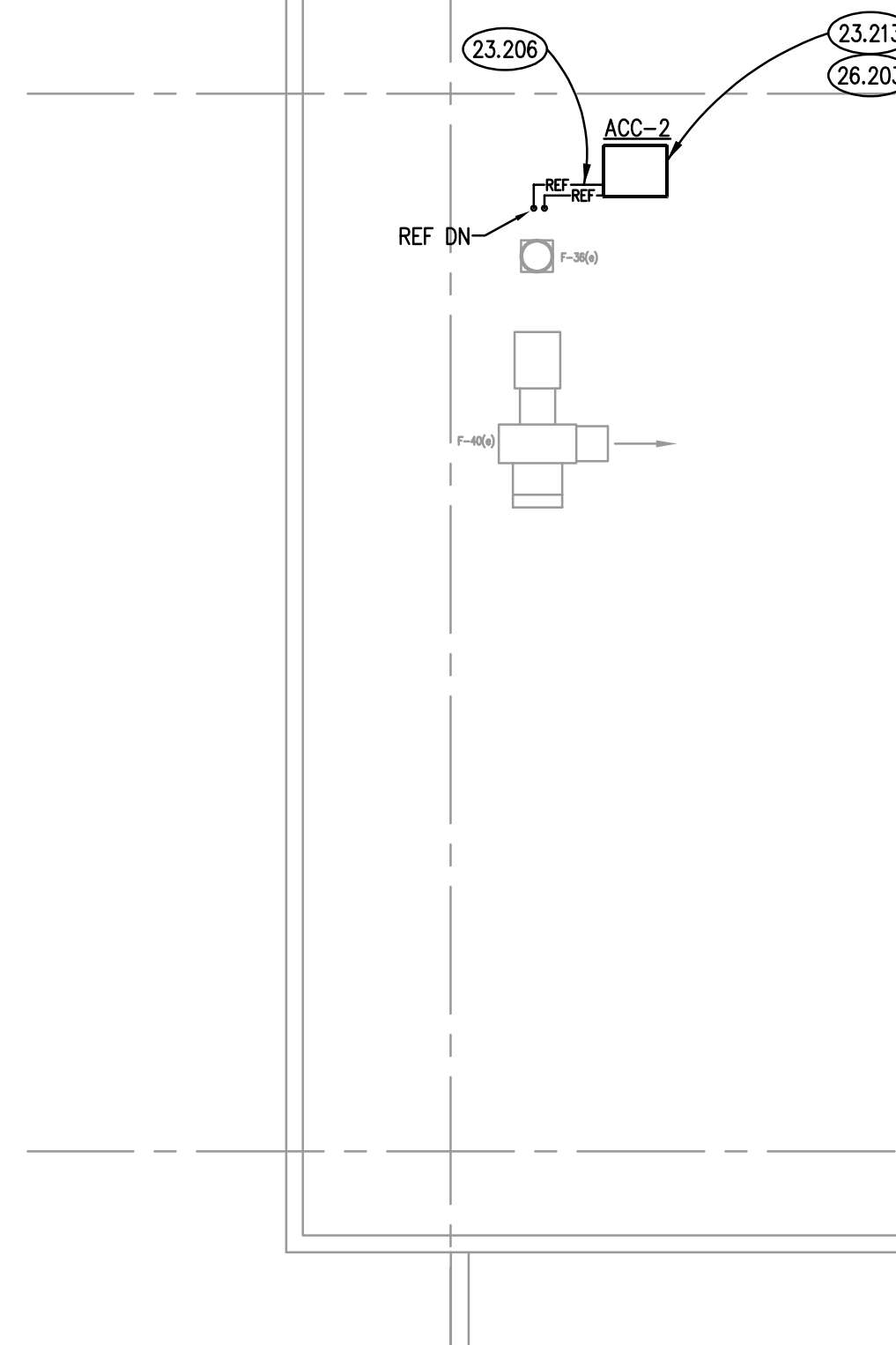
SCALE: 1/8" = 1'-0"

3


**C2021 DEMOLITION PLAN**

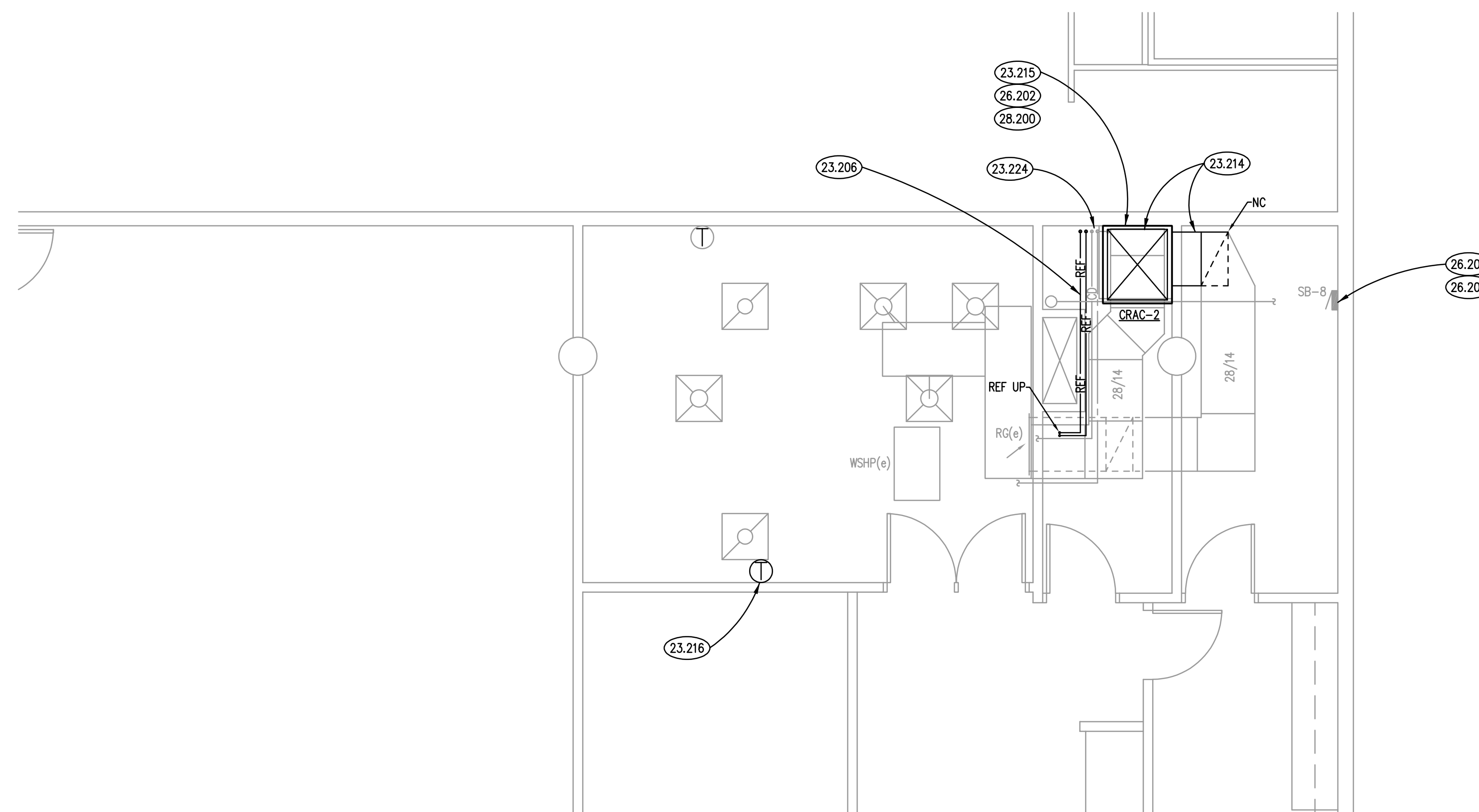
SCALE: 1/4" = 1'-0"

1


**PARTIAL ROOF MECHANICAL PLAN**

SCALE: 1/8" = 1'-0"

4


**C2021 NEW WORK PLAN**

SCALE: 1/4" = 1'-0"

2

**COMPUTER ROOM A/C SCHEDULE**

MARK	AIR FLOW (CFM)	ENT AIR TEMP (db / wb °F)	LVG AIR TEMP (db / wb °F)	REFRIGERANT TYPE	SENS CAP (MBH)	TOTAL CAP (MBH)	COIL ROWS/ FACE VEL (IN WG)	REHEAT CAPACITY (KW)	HUMIDIFIER TYPE/CAP (LBS/HR)	FILTER TYPE EFFICIENCY (MERV)	SUPPLY FAN (HP)	EXTERNAL STATIC PRESS (IN WG)	COMPRESSOR TYPE	COMPRESSOR (NO.)	ELECTRICAL V/PH/Hz	MCA	MODEL	AREA SERVED	NOTES
CRAC-2	1,900	75.0 / 61.0	56.9 / 53.8	R-410A	40.2	40.8	3 / 452.4	5.4	10.0	8	1.3	0.5	SCROLL	1	208/3/60	43.9	GTAU	RM C2021	1

**NOTES**

1. MODEL BASED ON DATA AIRE.

**AIR-COOLED CONDENSER SCHEDULE**

MARK	NO. OF FANS	AMBIENT OAT (°F)	REFRIGERANT TYPE	ELECTRICAL V/PH/Hz	MCA	MODEL	UNIT SERVED	NOTES
ACC-2	1	95	R-410A	208/3/60	4.0	GHRC-01	CRAC-1	1

**NOTES**

1. MODEL BASED ON DATA AIRE.

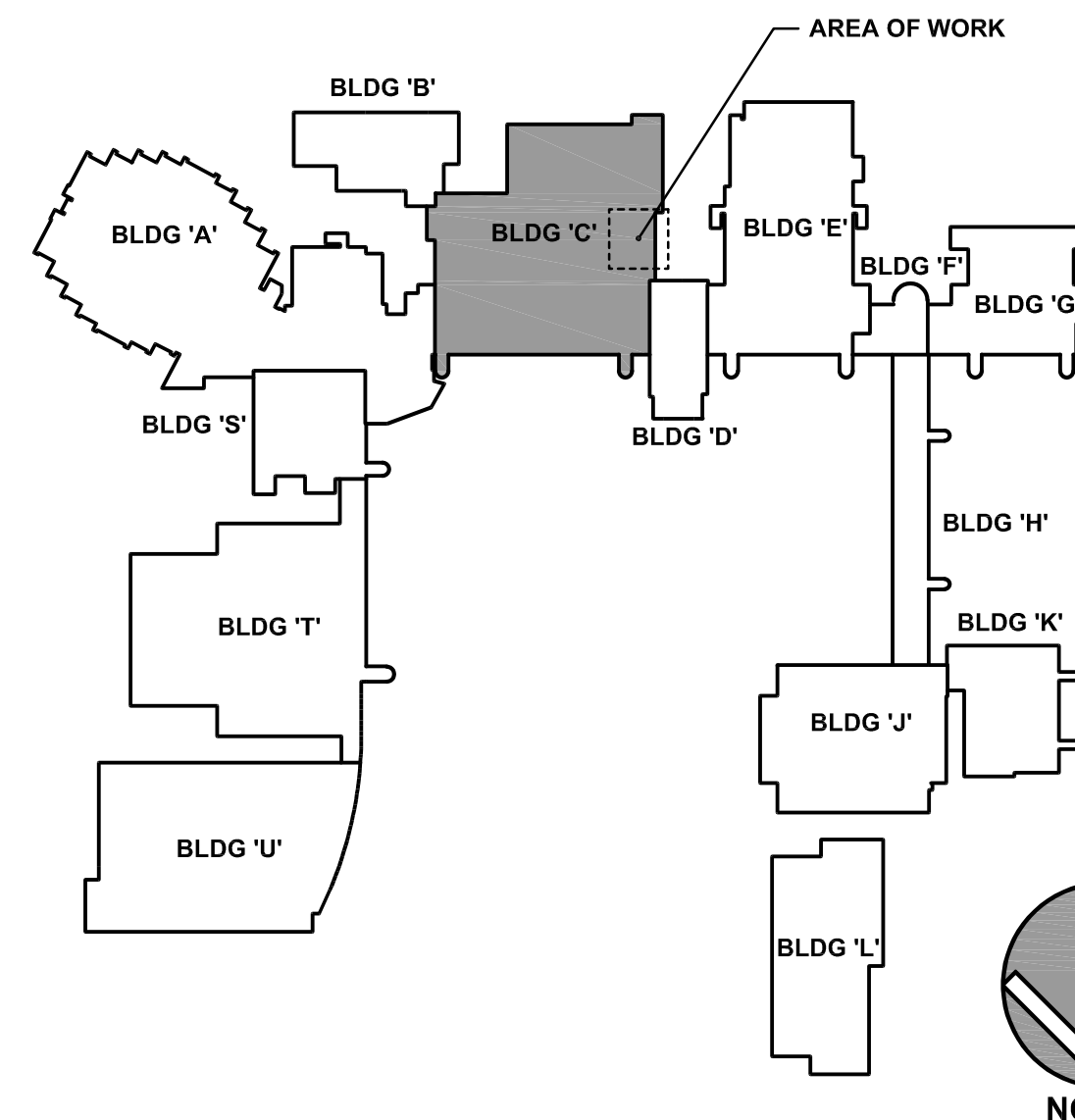
**BUILDING AUTMATION SYSTEM POINTS LIST**

COMPUTER ROOM AIR CONDITIONING UNIT	HARDWARE				SOFTWARE			
	AI	AO	DI	DO	SCHED	TREND	ALARM	GRAPH
SYSTEM STATUS			X					X
SUPPLY FAN STATUS			X					X
COOLING STATUS			X					X
AIR COOLED CONDENSING UNIT STATUS			X					X
SPACE TEMPERATURE SETPOINT		X				X		X
SPACE TEMPERATURE	X					X		X
SPACE HUMIDITY	X					X	X	X
SPACE HIGH TEMPERATURE ALARM			X			X	X	
SPACE LOW TEMPERATURE ALARM			X			X	X	
FILTER STATUS			X			X	X	

**KEYNOTES**

KEYNOTES ARE TYPICALLY NOT DUPLICATED WITHIN A GIVEN DETAIL. AN UN-KEYNOTED ITEM IN A DETAIL IS THE SAME AS A KEYNOTED ITEM HAVING THE SAME APPEARANCE WITHIN THE SAME DETAIL.

- 23.108 REMOVE CRAC UNIT. REMOVE SUPPLY AND RETURN DUCT BACK AS REQUIRED FOR INSTALLATION OF NEW CRAC UNIT.
- 23.109 REMOVE CONDENSATE LINE AND COLD WATER LINE BACK AS REQUIRED FOR INSTALLATION OF NEW CRAC UNIT. PROVIDE TEMPORARY CAP FOR NEW CONNECTION.
- 23.110 REMOVE REFRIGERANT PIPING AND SPECIALTIES IN ITS ENTIRETY.
- 23.111 REMOVE THERMOSTAT FOR CRAC UNIT. FIELD VERIFY THERMOSTAT SERVES CRAC UNIT PRIOR TO REMOVAL.
- 23.116 REMOVE AIR COOLED CONDENSER AND ASSOCIATED REFRIGERANT PIPING.
- 23.206 PROVIDE REFRIGERANT PIPING, SIZED AND CONFIGURED IN ACCORDANCE WITH MANUFACTURER'S REQUIREMENTS, BETWEEN INDOOR EVAPORATOR AND OUTDOOR CONDENSING UNIT.
- 23.213 PROVIDE NEW AIR COOLED CONDENSING UNIT. PROVIDE ALL MATERIALS AND LABOR TO MOUNT NEW UNIT ON EXISTING ROOF RAILS.
- 23.214 PROVIDE ALL MATERIALS AND LABOR TO RECONFIGURE EXISTING DUCTWORK TO CONNECT TO NEW CRAC UNIT.
- 23.215 PROVIDE INTERFACE OF NEW CRAC UNIT INTO EXISTING JOHNSON CONTROLS BUILDING AUTOMATION SYSTEM.
- 23.216 REMOVE POINTS AND GRAPHICS FROM EQUIPMENT REMOVED AND PROVIDE NEW POINTS AND GRAPHICS.
- 23.224 PROVIDE NEW THERMOSTAT FOR CRAC UNIT.
- 23.224 PROVIDE NEW CONNECTION BETWEEN NEW CRAC UNIT AND EXISTING WATER AND CONDENSATE LINES.
- 26.103 DEMOLISH ELECTRICAL CONNECTION TO FLOOR-MOUNTED AIR CONDITIONING UNIT TO BE REMOVED. DEMOLISH BRANCH CIRCUITRY TO SOURCE.
- 26.104 DEMOLISH ELECTRICAL CONNECTION TO AIR-COOLED CONDENSER TO BE REPLACED. DEMOLISH BRANCH CIRCUITRY TO SOURCE.
- 26.105 DEMOLISH QTY. 3, 20 AMPERE, SINGLE POLE CIRCUIT BREAKERS FROM PANEL SB-8(OXTS 19,21,23). RETURN CIRCUIT BREAKERS TO OWNER'S STOCK.
- 26.202 PROVIDE ELECTRICAL CONNECTION TO NEW COMPUTER ROOM AIR CONDITIONER (CRAC-2). HOMERUN 3#8, #10G, 3/4" TO PANEL SP-8. PROVIDE NEW 50 AMPERE, 3 POLE CIRCUIT BREAKER (SP-8-19/21/23).
- 26.203 PROVIDE ELECTRICAL CONNECTION TO NEW AIR COOLED CONDENSER (ACC-2). HOMERUN 3#12, #12G, 1/2" TO PANEL SP-8. REUSE EXISTING 20 AMPERE, 3 POLE CIRCUIT BREAKER (SP-8-13/15/17).
- 28.100 DISCONNECT AND PROTECT EXISTING SIGNALLING LINE CIRCUIT TO CRAC UNIT SMOKE DETECTOR.
- 28.200 EXTEND EXISTING SIGNALLING LINE CIRCUIT TO NEW CRAC UNIT SMOKE DETECTOR TO ENSURE A COMPLETE AND OPERATIONAL SYSTEM.

**KEY PLAN**


ISSUED

CONSTRUCTION DOCUMENTS

 JOB NO. 18-292-1391  
 DRAWN BWG  
 CHECKED DDW  
 APPROVED DDW

SHEET TITLE

 MECHANICAL PLANS -  
 MAIN CAMPUS

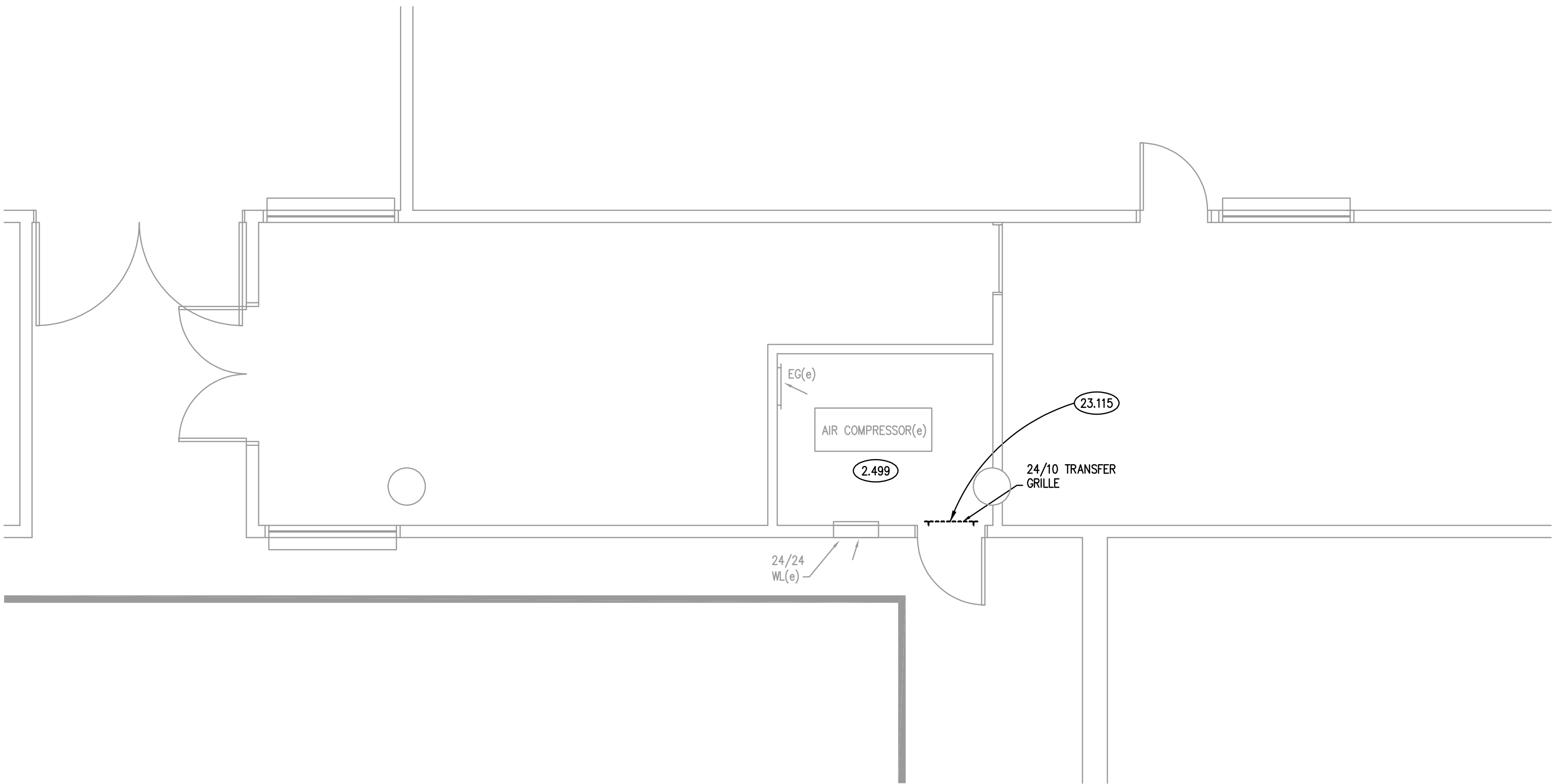
SHEET NUMBER

**M311**

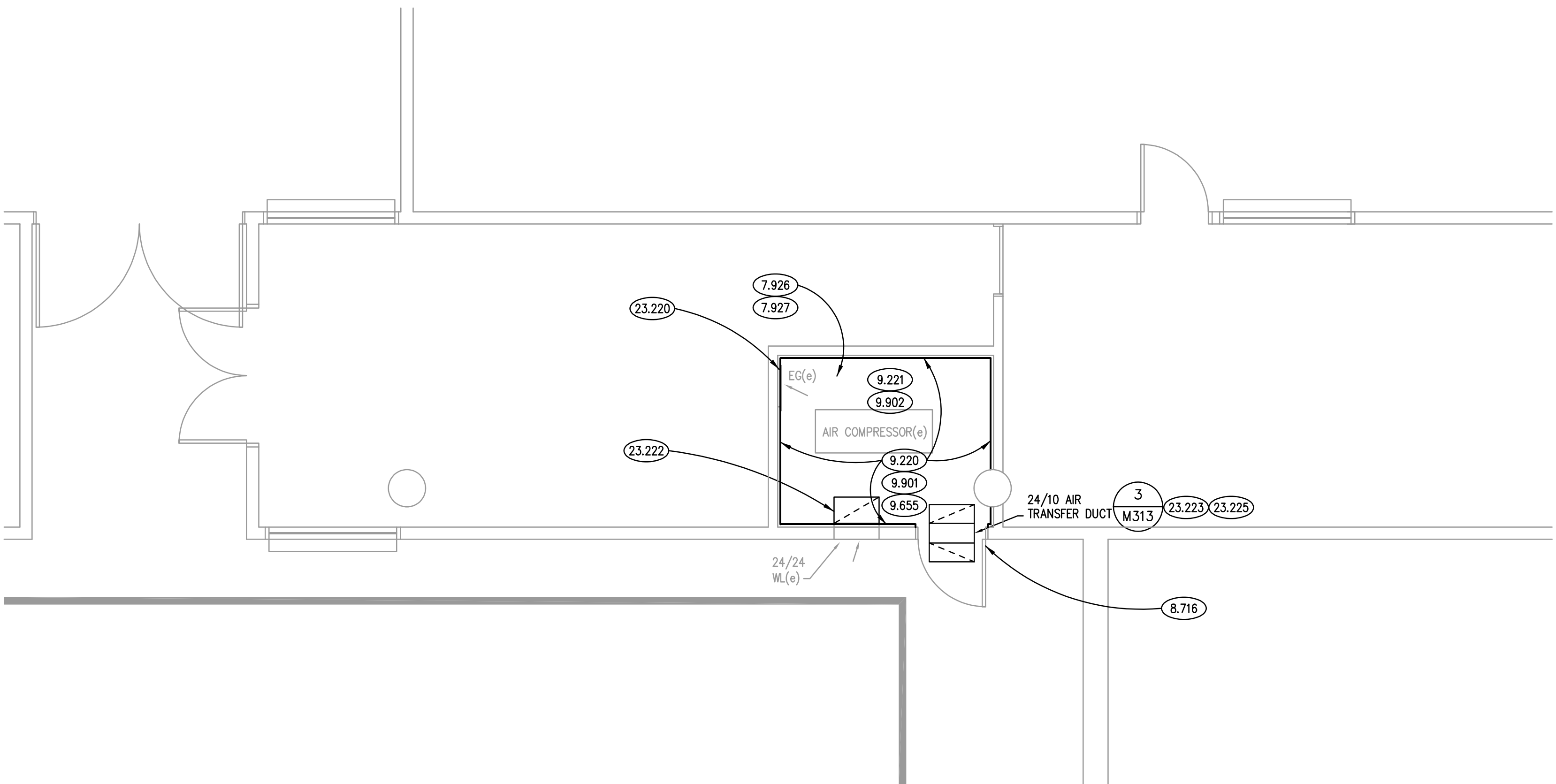
KEYNOTES ARE TYPICALLY NOT DUPLICATED WITHIN A GIVEN DETAIL. AN UN-KEYNOTED ITEM IN A DETAIL IS THE SAME AS A KEYNOTED ITEM HAVING THE SAME APPEARANCE WITHIN THE SAME DETAIL.

- ## C1013 - DEMOLITION PLAN

**SCALE: 1/4" = 1'-0"**



**SCALE: 1/4" = 1'-0"**



**NORTH**

A circular compass rose with a white arrow pointing upwards, labeled 'NORTH' above it. The rose is divided into four quadrants by a vertical and a horizontal line. The top half is white, and the bottom half is grey. The left and right halves are also divided by a vertical line, with the outer edges being white and the inner edges being grey.

## INSTRUCTION DOCUMENTS

[illegible]

OB NO.	18-292-1391
DRAWN	BWG
CHECKED	DDW
APPROVED	DDW

SHEET TITLE

## MECHANICAL PLANS - MAIN CAMPUS

SHEET NUMBER

# M313

**SCALE: NTS**

