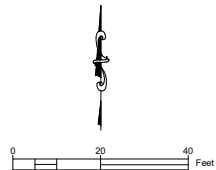
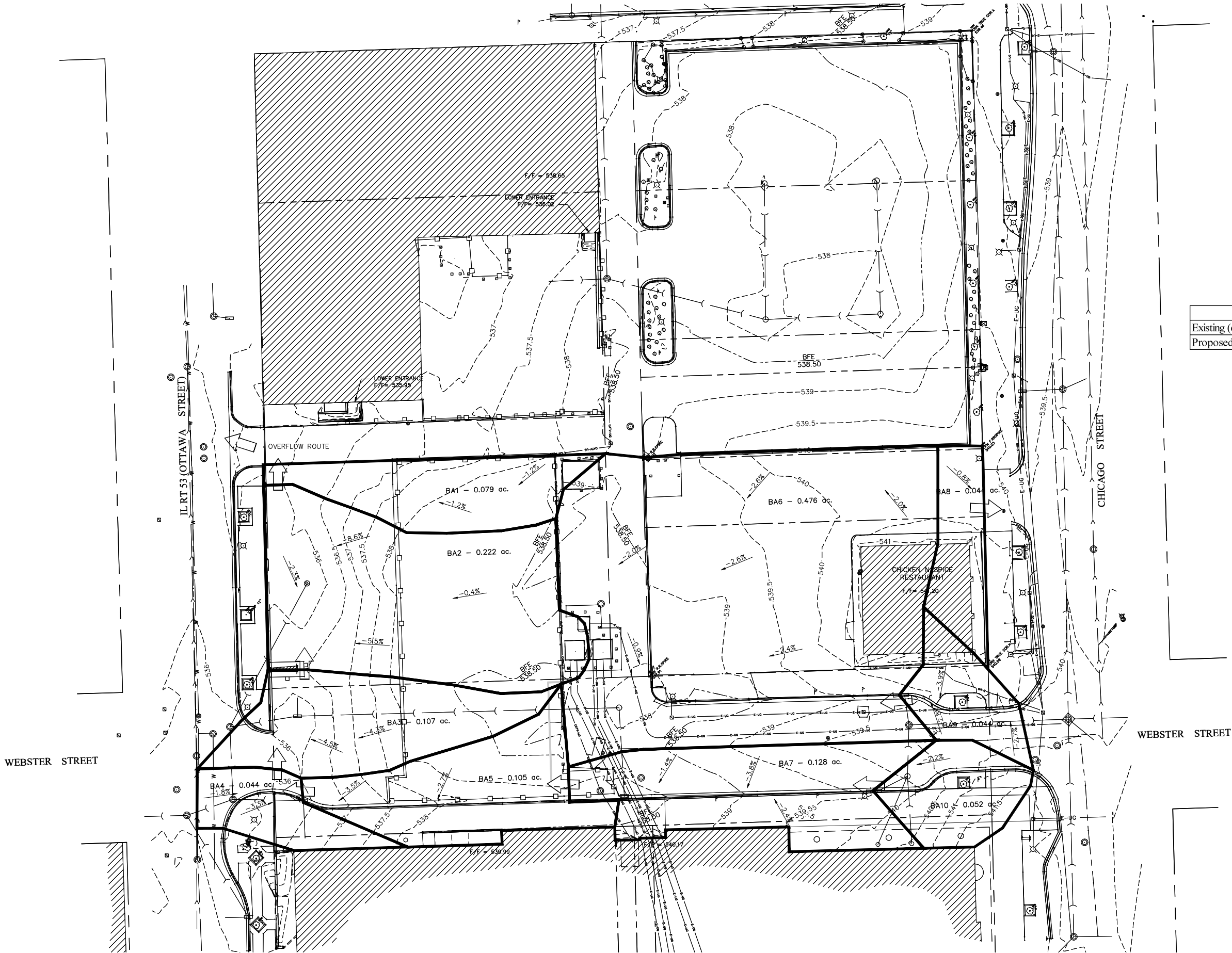


F:\Projects\Miscellaneous\20904\CAD\20904_LIC-Ex-ConstructionPlans.dwg
2/25/2021 1:12 PM
DWS



SYMBOL LEGEND

OVERFLOW ROUTE

NOTE:
SITE RUNOFF EXISTS AT CITY OF
JOLIET ALLEY NORTH OF PROJECT TO
OTTAWA STREET.

Existing Flows Table

	10yr-15Min	50yr-15min	100yr-15min
Existing (cfs)	9.35	15.00	17.56
Proposed (cfs)	8.67	14.23	16.72

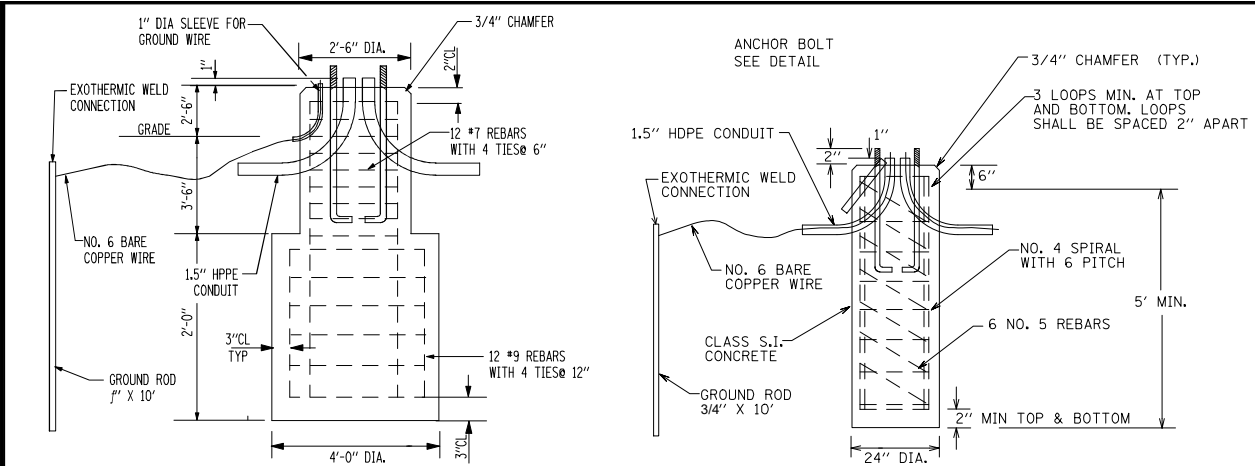
CITY CENTER CAMPUS
PARKING LOT AND PLAZA
EXISTING DRAINAGE PLAN

JOLIET JUNIOR COLLEGE
1215 HOUBOLT RD
JOLIET, IL 60431

SCALE	1"=20'
DATE	2-1-2021
DESIGN	JTS
CHECKED	HJH
DRAWN	DWS
PROJECT NO.	20904

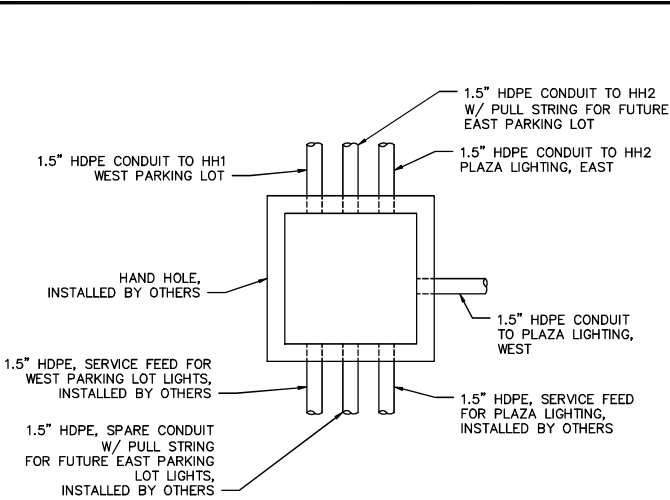
uplandDesign Ltd
Park Planning and Landscape Architecture
1250 W 18th St, Chicago, Illinois 60608
24042 Lockport St, Plainfield, Illinois 60544
815-254-0091 www.uplanddesign.com

HAMILTON CONSULTING
ENGINEERS, INC.
3230 Executive Drive, Joliet, Illinois 60431
Ph: (815) 730-3444 Fax: (815) 730-6703
ILL. LICENSE NO. 184-003205
© 2021 HAMILTON CONSULTING ENGINEERS, INC.

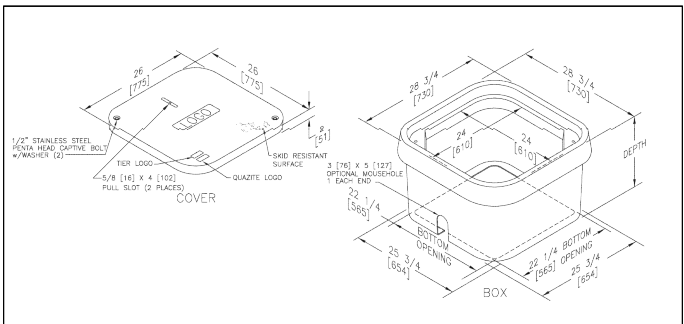


**TRAFFIC POLE FOUNDATION (TPF)
FOR LIGHTING**

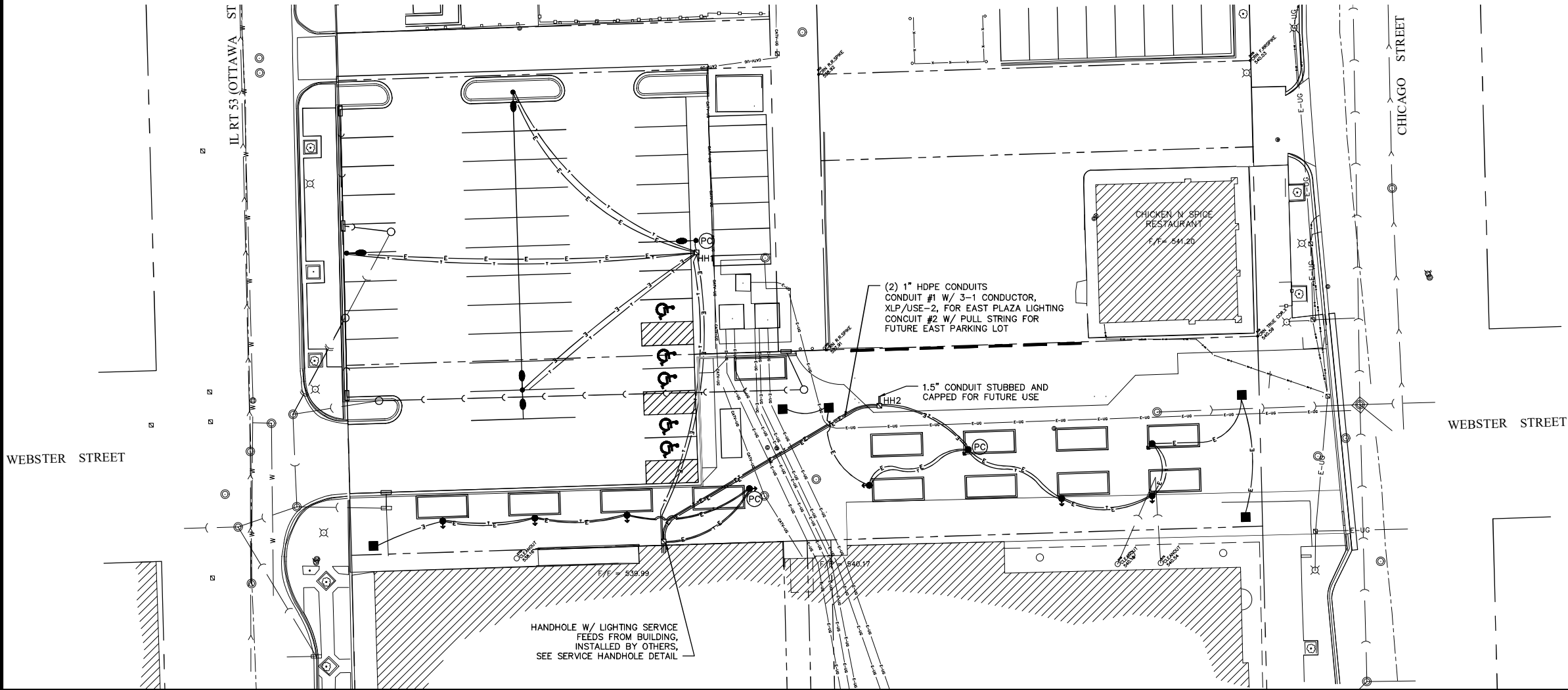
**PLAZA POLE FOUNDATION (PPF)
FOR LIGHTING**



**SERVICE HAND HOLE
DETAIL**

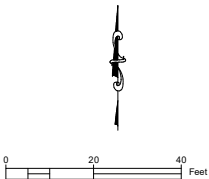


**24\"X24\" FRP STRAIGHT
WALL STACKABLE
HANDHOLE DETAIL**



SYMBOL LEGEND

- P1 POLE MOUNTED LUMINAIRE WITH ARM DIRECTION, TRAFFIC POLE FOUNDATION.
- P3 POLE MOUNTED LUMINAIRE WITH ARM DIRECTION SHOWN, TRAFFIC POLE FOUNDATION.
- P2 POLE MOUNTED LUMINAIRE WITH ARM DIRECTION SHOWN, PLAZA POLE FOUNDATION.
- LIGHTED DECORATIVE COLUMN AND FOUNDATION.
- PC PHOTO CELL LIGHTING CONTROLLERS IN POLE MOUNTED PANEL
- HH HANDHOLE, FRP
- 1.5\" HDPE CONDUIT, RED W/ 4-1 CONDUCTOR, #10, XLP/USE-2, 208V, 3PH
- 1.5\" HDPE CONDUIT, BLUE, W/ PULL STRING FOR FUTURE COMMUNICATION



**CITY CENTER CAMPUS
PARKING LOT AND PLAZA
LIGHTING PLAN**

**JOLIET JUNIOR COLLEGE
1215 HOUBOLT RD
JOLIET, IL 60431**

SCALE
1\"=20'
DATE
2-2-2021
DESIGN
JTS
CHECKED
HJH
DRAWN
DWS
PROJECT NO.
20904
SHEET

Schedule

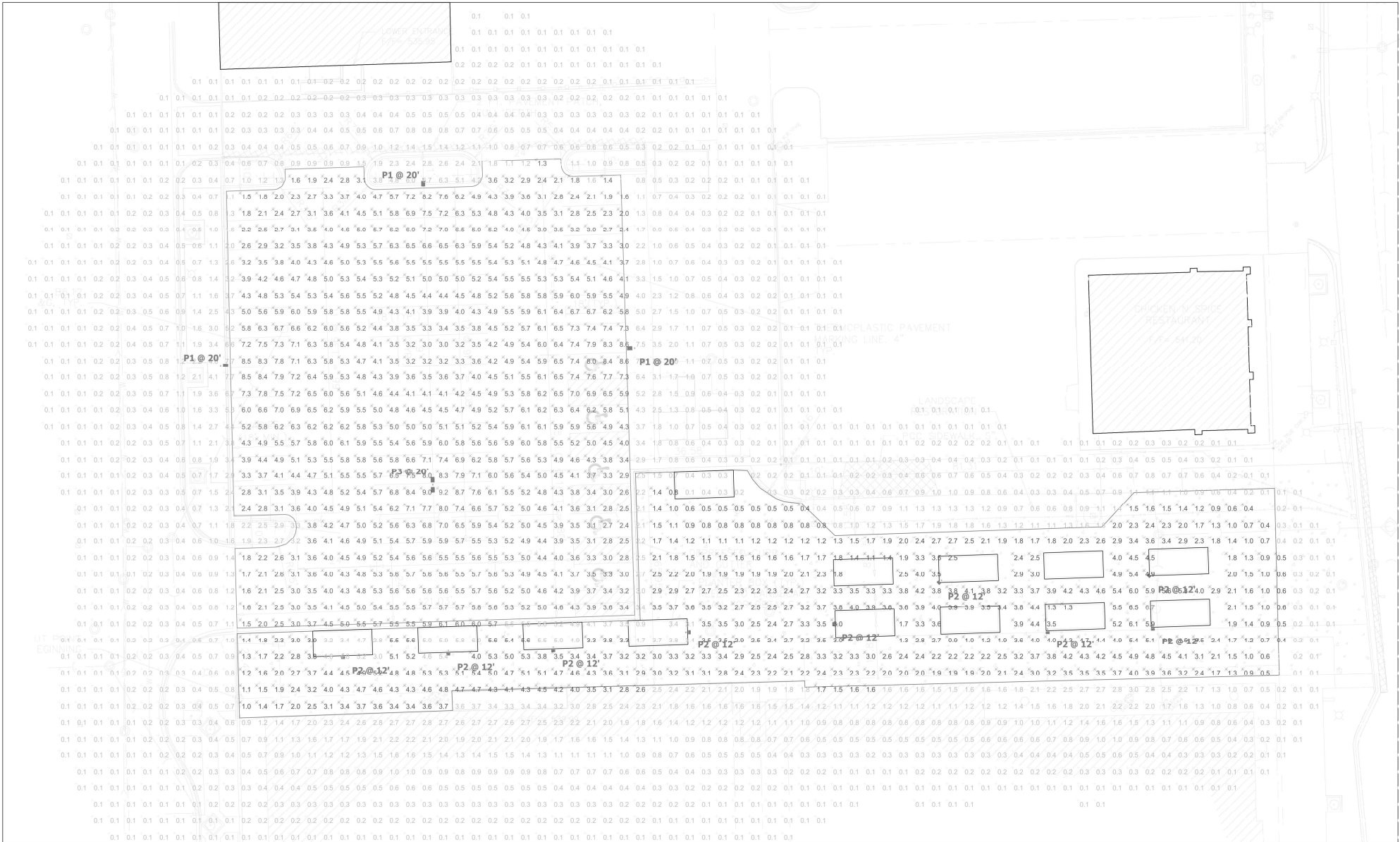
Symbol	Label	QTY	Manufacturer	Catalog Number	Description	Lamp	Filename	Lumens per Lamp	LLF
	P1	3	Lithonia Lighting	DSX2 LED P2 40K T4M MVOLT HS	DSX2 LED P2 40K T4M MVOLT with houseside shield	LED	DSX2_LED_P2_40K_T4M_MVOLT_HS.ies	18272	0.93
	P2	9	Lithonia Lighting	DSX0 LED P2 40K T5M MVOLT	DSX0 LED P2 40K T5M MVOLT	LED	DSX0_LED_P2_40K_T5M_MVOLT.ies	6236	0.93
	P3	1	Lithonia Lighting	DSX2 LED P2 40K T5W MVOLT	DSX2 LED P2 40K T5W MVOLT	LED	DSX2_LED_P2_40K_T5W_MVOLT.ies	24808	0.93
			Lithonia Lighting	DSX2 LED P2 40K T5W MVOLT	DSX2 LED P2 40K T5W MVOLT	LED	DSX2_LED_P2_40K_T5W_MVOLT.ies	24808	0.93
			Lithonia Lighting	DSX2 LED P2 40K T5W MVOLT	DSX2 LED P2 40K T5W MVOLT	LED	DSX2_LED_P2_40K_T5W_MVOLT.ies	24808	0.93

NOTES:						
1. CALCULATION POINTS ARE AT GROUND LEVEL.						
2. ALL FIXTURE HEIGHTS ARE NOTED ON THE PLAN						
3. CALCULATIONS POINTS ARE ON A 5' x 5' SPACING.						
4. CARS, SHRUBBERY, EQUIPMENT AND SIGNAGE CAN CAUSE REDUCED LIGHT LEVELS FROM WHAT IS EXPECTED.						
5. CALCULATIONS PROVIDED ARE NOT A GUARANTEE OF PERFORMANCE. ACTUAL LIGHT LEVELS MAY VARY.						
**FIELD VERIFICATION REQUIRED.						

Statistics

Description	Symbol	Avg	Max	Min	Max/Min	Avg/Min
Full Area Calc.	+	1.3 fc	9.2 fc	0.0 fc	N/A	N/A
Parking Lot Calc.	✕	4.9 fc	9.2 fc	1.2 fc	7.7:1	4.1:1
Pathway Calc.	✕	2.8 fc	6.7 fc	0.3 fc	22.3:1	9.3:1

**THIS DOCUMENT CONTAINS CONFIDENTIAL AND PROPRIETARY INFORMATION OF KSA LIGHTING & CONTROLS. THIS DOCUMENT MAY ONLY BE USED BY OR FOR THE BENEFIT OF KSA LIGHTING & CONTROLS REPRESENTATIVES AND CUSTOMERS. FOR LIGHTING DESIGNS THIS LIGHTING DESIGN IS NOT A PROFESSIONAL ENGINEERING DRAWING AND IS PROVIDED FOR INFORMATIONAL PURPOSES ONLY, WITHOUT WARRANTY AS TO ACCURACY, COMPLETENESS, RELIABILITY OR OTHERWISE. KSA LIGHTING & CONTROLS IS NOT RESPONSIBLE FOR SPECIFYING THE LIGHTING OR ILLUMINATION REQUIREMENTS FOR ANY SPECIFIC PROJECT, INCLUDING MUNICIPAL OR BUILDING CODE REQUIREMENTS. IT IS THE OBLIGATION OF THE END-USER TO CONSULT WITH A PROFESSIONAL ENGINEERING ADVISOR TO DETERMINE WHETHER THIS LIGHTING DESIGN MEETS THE APPLICABLE PROJECT REQUIREMENTS FOR LIGHTING SYSTEM PERFORMANCE, SAFETY, SUSTAINABILITY AND EFFECTIVENESS FOR USE IN A PARTICULAR APPLICATION. FIELD VERIFICATION IS RECOMMENDED WHEN CALIBRATIONS ARE BASED ON FNU-USER OR CUSTOMER-PROVIDED INFORMATION. FNU-USER ENVIRONMENT AND APPLICATION (INCLUDING, BUT NOT LIMITED TO, VOLTAGE VARIATION AND DIRT ACCUMULATION) CAN CAUSE ACTUAL FIELD PERFORMANCE TO DIFFER FROM THE CALCULATED PHOTOMETRIC PERFORMANCE REPRESENTED IN THIS LIGHTING DESIGN. IN NO EVENT WILL KSA LIGHTING & CONTROLS BE RESPONSIBLE FOR ANY LOSS RESULTING FROM ANY USE OF THIS LIGHTING DESIGN.



JOLIET JUNIOR COLLEGE - 1215 HOUBOLT RD - PHOTOMETRIC ANALYSIS

KSA LIGHTING & CONTROLS

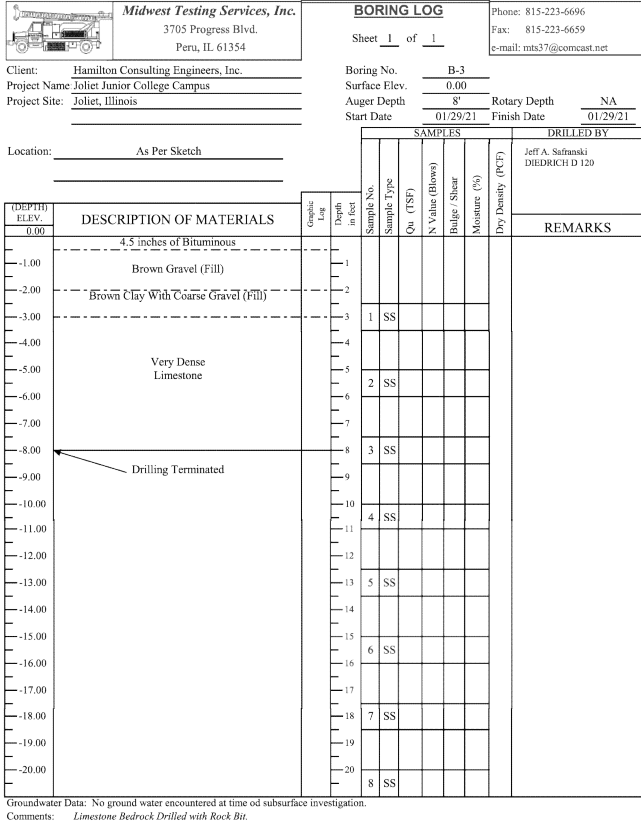
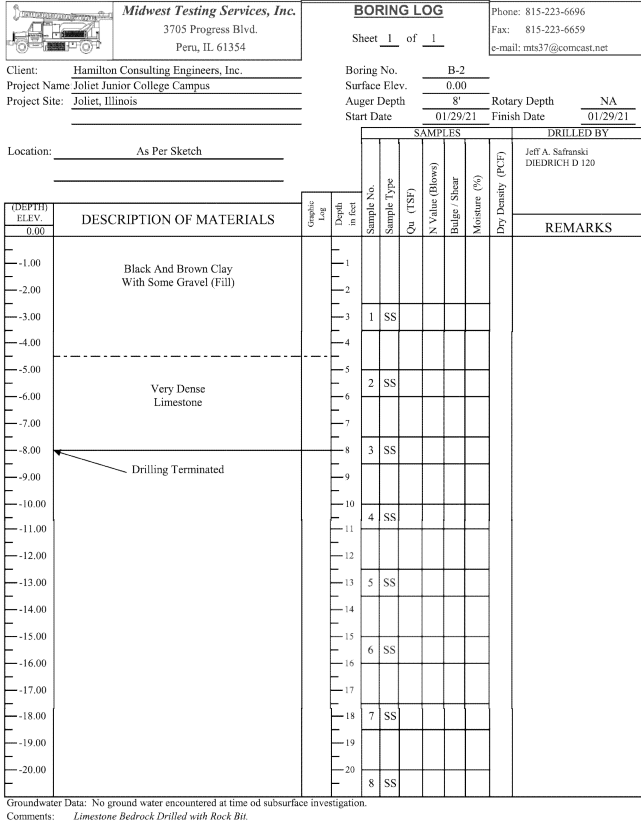
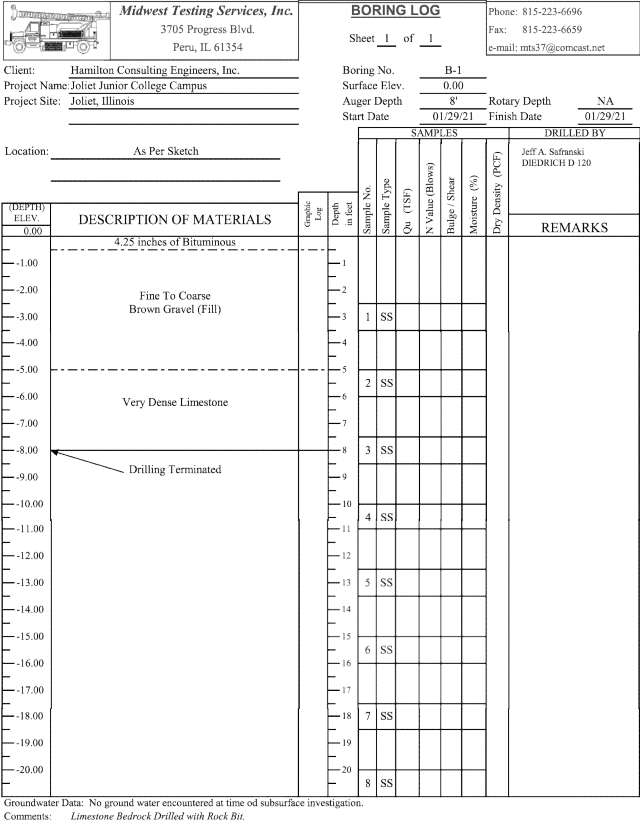
DRAFTED BY
JO
DATE
01/19/2021
SCALE
Not to Scale
KSA CONTACT
DRAWN
DWS
PAGE SIZE
ARCH E1
1 of 3



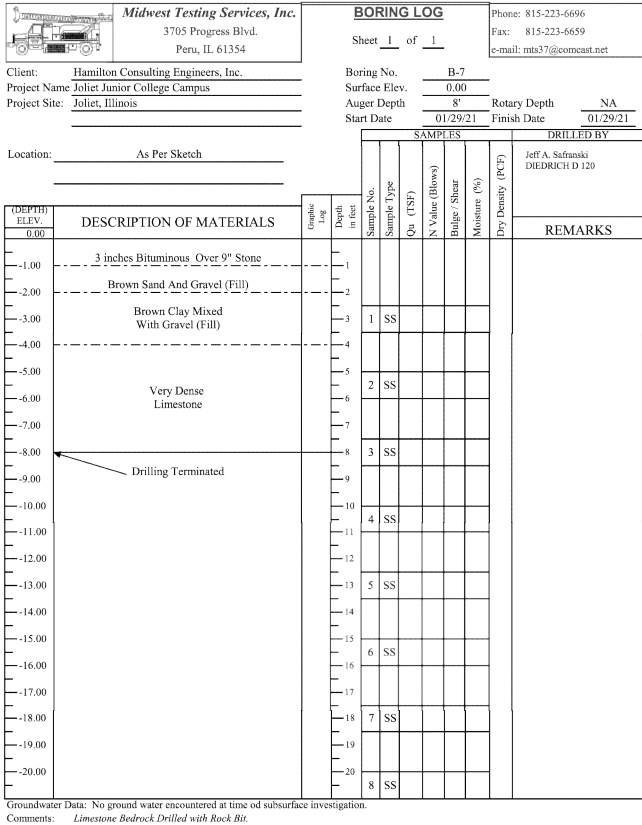
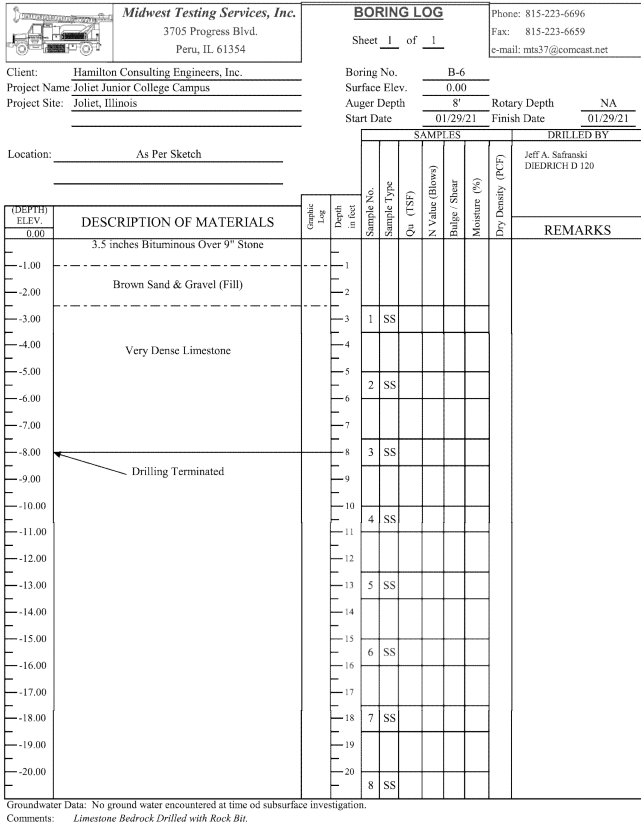
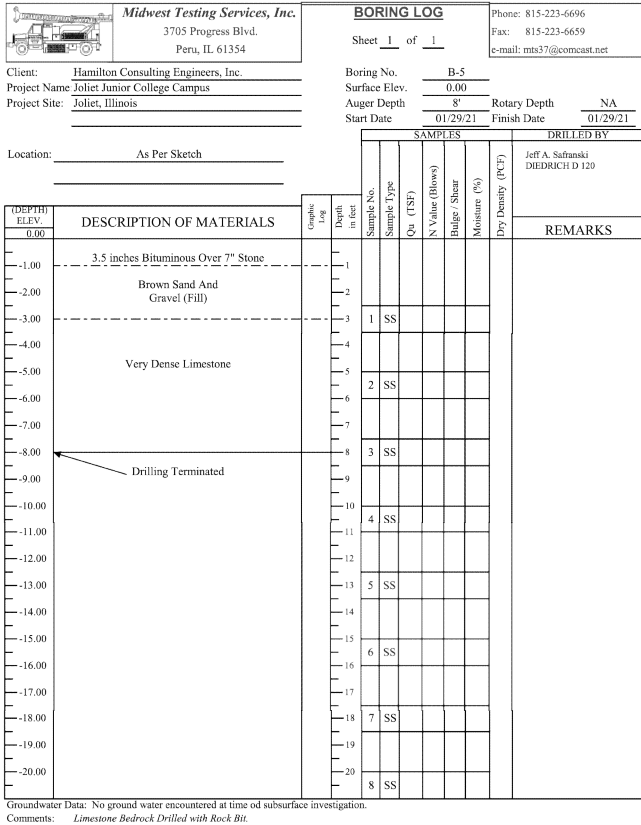
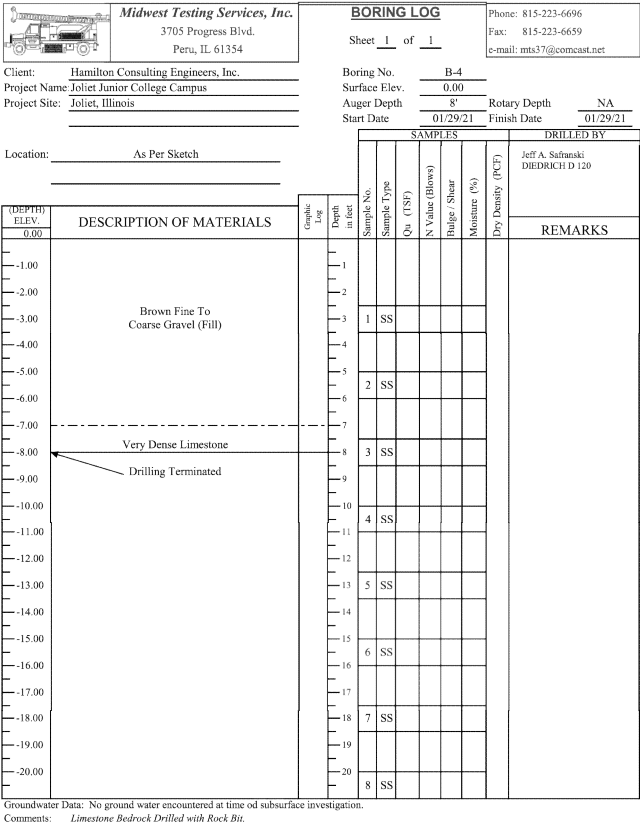
CITY CENTER CAMPUS
PARKING LOT AND PLAZA
PHOTOMETRIC PLAN

JOLIET JUNIOR COLLEGE
1215 HOUBOLT RD
JOLIET, IL 60431

SCALE
NONE
DATE
2-1-2021
DESIGN
JTS
CHECKED
HJH
PROJECT NO.
20904
SHEET
16 of 18



NOTE:
REFER TO EXISTING CONDITIONS SHEET FOR SOIL BORING LOCATIONS.



uplandDesign Ltd
Park Planning and Landscape Architecture
1250 W 18th St, Chicago, Illinois 60608
24042 Lockport St, Plainfield, Illinois 60544
815-254-0091 www.uplanddesign.com

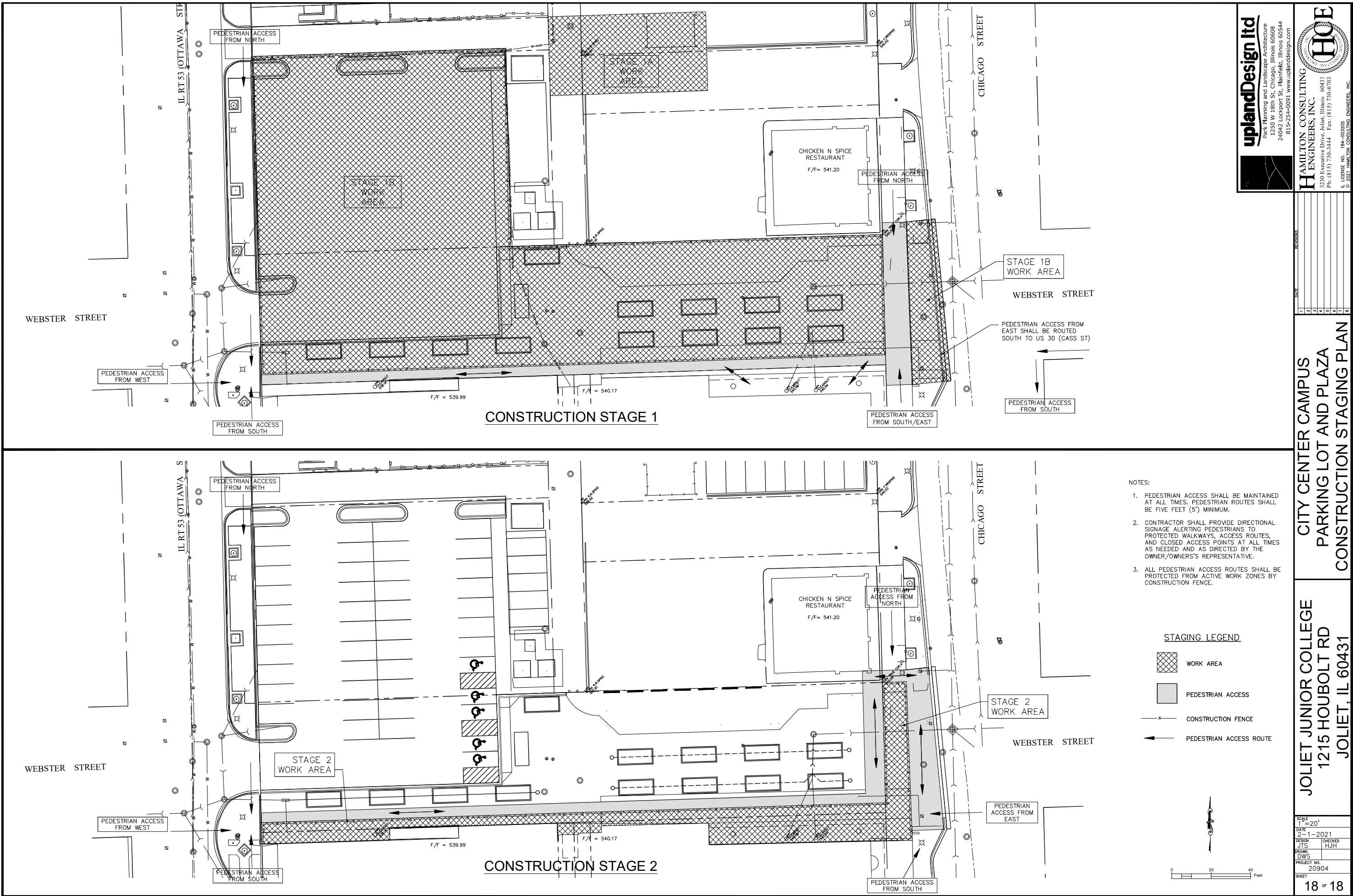


CITY CENTER CAMPUS
PARKING LOT AND PLAZA
SOIL BORINGS

JOLIET JUNIOR COLLEGE
1215 HOUBOLT RD
JOLIET, IL 60431

SCALE: NONE
DATE: 2-1-2021
DESIGN: JTS
DRAWN: DWS
PROJECT NO.: 20904
SHEET: 17 of 18

F:\Projects\Miscellaneous\20904\CAD\20904_LIC-Pr-ConstructionPlans.dwg
2/26/2021 11:11 AM
DWS



uplandDesign Ltd
Park Planning and Landscape Architecture
1250 W 18th St, Chicago, Illinois 60608
24042 Lockport St, Plainfield, Illinois 60544
815-254-0091 www.uplanddesign.com






HAMILTON CONSULTING ENGINEERS, INC.
3230 Executive Drive, Joliet, Illinois 60431
Ph: (815) 730-3444 Fax: (815) 730-6703
IL LICENSE NO. 184-003205
© 2021 HAMILTON CONSULTING ENGINEERS, INC.

Key	Item	Color	Quantity	Model	Manufacturer	Supplier
A	Twist Bench	Slate Grey	8	Q2TW108B	Quick Crete Products	Quick Crete Products
B	Light Column	Black Powdercoat	5	Custom	ICON	Parkreation

1. It is the responsibility of the Contractor to perform layout of all project elements and points for review by Owner prior to construction. (This work is considered incidental to the project and not paid as a separate bid item).
2. The contractor shall be responsible for all materials and quantities as required to complete the work in accordance with the plans and specifications. The contractor will notify the Owner's Representative in writing of any discrepancies or changes required to complete the work before any action may be taken. All changes or change orders must be approved by the Owner's Representative and Owner before any changes are executed.
3. Contractor shall follow City of Joliet permit requirements as part of the project.
4. Contractor shall confirm that all equipment use/safety zones specified by play equipment manufacturer are adhered to.

1. The Standard Specifications for Road and Bridge Construction (SSRBC), adopted April 1, 2016 adopted by the Illinois department of Transportation, and all amendments thereto the design manual, highway standards, and the culvert manual, also prepared by the Illinois Department of Transportation.
2. The Americans with Disabilities Act and the Illinois Accessibility Code.
3. The Illinois Procedures and Standards for Urban Soil Erosion and Sedimentation Control, and IEPA Standards and Specifications for Soil Erosion and Sedimentation Control.
4. U.S. Soil Conservation Service Field Engineering Handbook
5. All codes and ordinances of the City of Joliet, United States Army Corp of Engineers, Illinois Department of Natural Resources, XXX County Soil and Water Conservation Districts, and all agencies having jurisdiction.
6. All requirements of the Occupational Safety and Health Administration.
7. The cited standard specifications, codes and permits, with these construction plans and details, are all to be considered part of the work, incidental items or accessories necessary to complete this work may not be specifically noted but are considered a part of these improvements.
8. In case of conflict, the more restrictive provision shall apply.



	Pavers
	Concrete Paving
	Concrete Joint
	Expansion Joint
	Light Pole



PLANT LIST

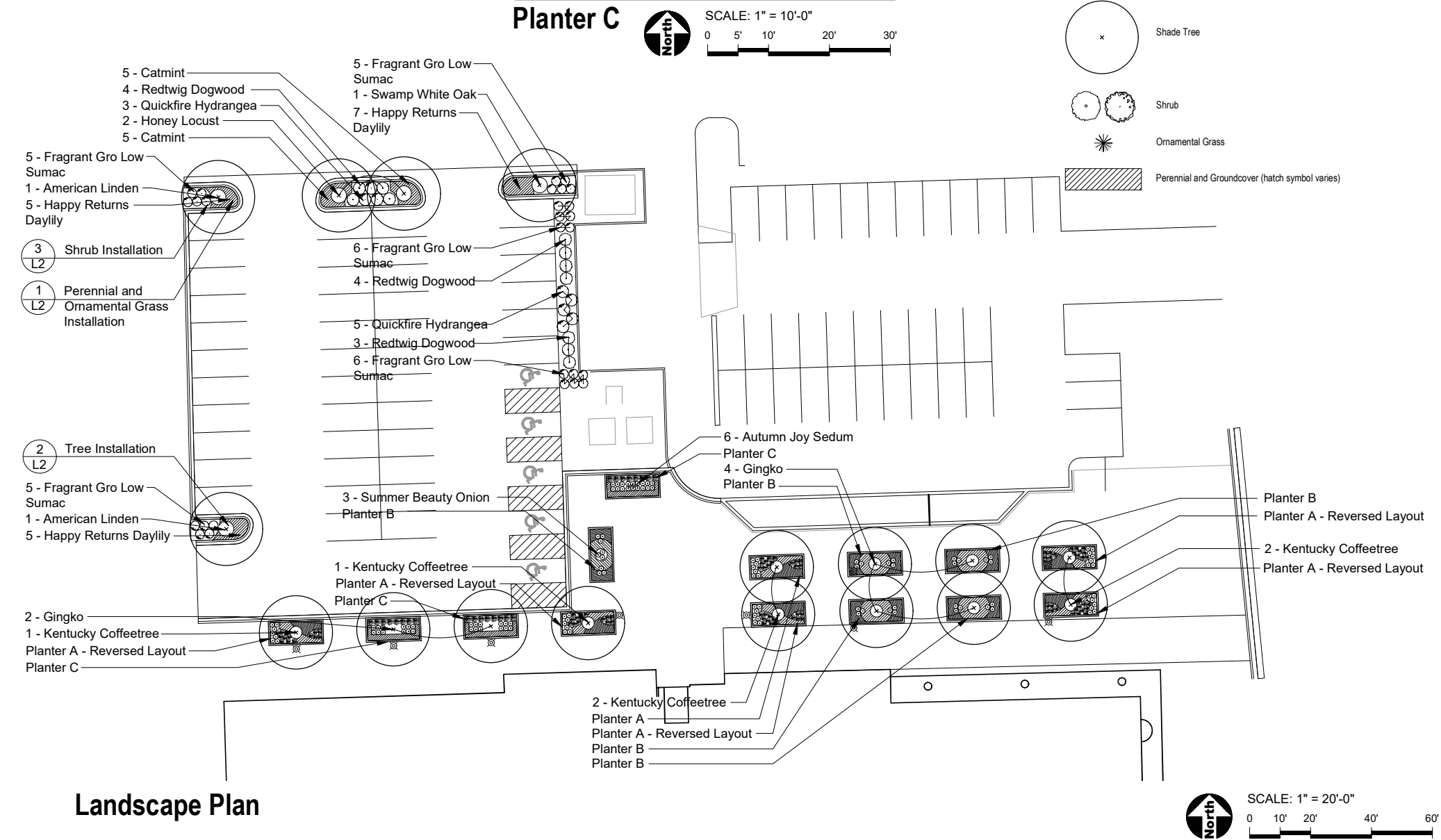
QTY	SIZE	BOTANICAL NAME	COMMON NAME	NOTES	Spacing
Shade Trees - Balled and Burlap					
6	2.5" Cal.	Gymnocladus dioicus	Kentucky Coffee Tree	Male	See Plans
6	2.5" Cal.	Ginkgo bilboa	Maidenhair Tree	Male	See Plans
2	2.5" Cal.	Gleditsia triacanthos	Honey Locust (Thornless)		See Plans
1	2.5" Cal.	Quercus bicolor	Swamp White Oak		See Plans
2	2.5" Cal.	Tilia cordata	American Linden		See Plans
17	Total				

Deciduous Shrubs - Balled and Burlap or Pot					
11	24" ht x 18" wide	Cornus sericea 'Cardinal'	Redtwig Dogwood		See Plans
8	24" ht x 18" wide	Hydrangea paniculata 'Quick Fire'	Little Quick Fire Hydrangea		See Plans
27	18" ht x 18" wide	Rhus aromatica 'Gro-Low'	Gro-Low Fragrant Sumac		See Plans
46	Total				

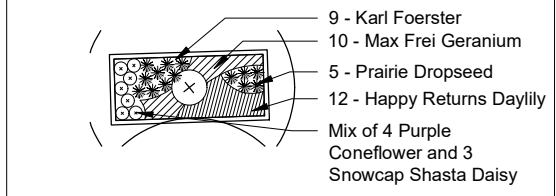
Perennials - Pots					
33	#1 cont.	Allium tanguticum 'Summer Beauty'	Summer Beauty Onion		18" o.c.
24	#1 cont.	Echinacea purpurea 'Magnus'	Purple Coneflower		18" o.c.
60	#1 cont.	Geranium x sanguineum 'Max Frei'	Max Frei Geranium		15" o.c.
89	#1 cont.	Hemerocallis 'Happy Returns'	Happy Returns Daylily		18" o.c.
18	#1 cont.	Leucanthemum x superbum 'Snowcap'	Snowcap Shasta Daisy		18" o.c.
110	#1 cont.	Nepeta racemosa 'Walker's Low'	Walker's Low Catmint		24" o.c.
45	#1 cont.	Salvia westerae	Westerae Salvia		18" o.c.
42	#1 cont.	Sedum spectabile 'Autumn Joy'	Autumn Joy Sedum		18" o.c.
421	Total				

Ornamental Grasses - Pots					
54	#1 cont.	Calamagrostis acutiflora 'Karl Foerster'	Karl Foerster Grass		24" o.c.
24	#1 cont.	Panicum virgatum	Switchgrass		24" o.c.
30	#1 cont.	Sporobolus heterolepis 'Tara'	Prairie Dropseed		18" o.c.
108	Total				

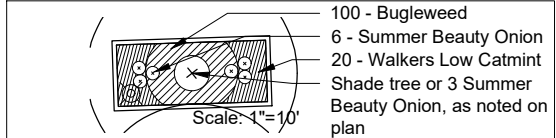
Groundcovers - 24 Cell Flat					
600	4" cell	Ajuga reptans	Bugleweed		18" o.c.
600	Total				



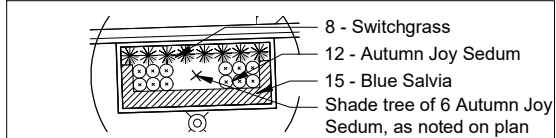
Landscape Plan



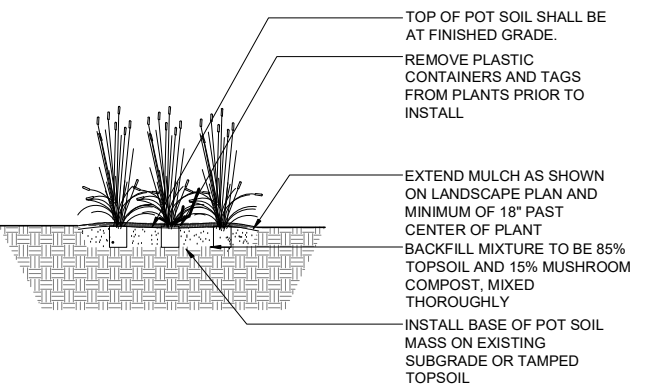
Planter A



Planter B

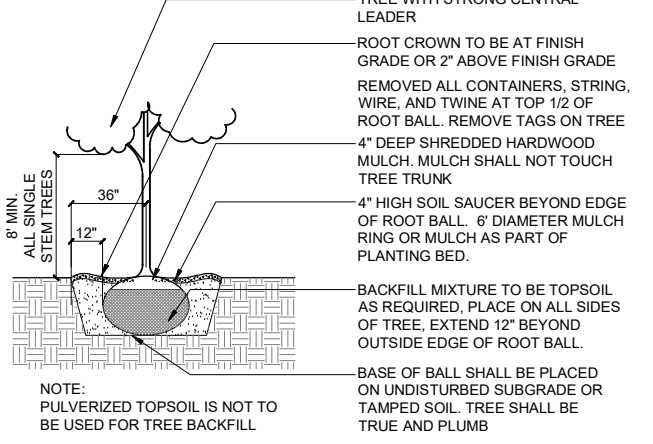
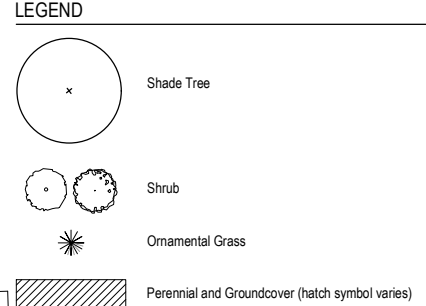


Planter C



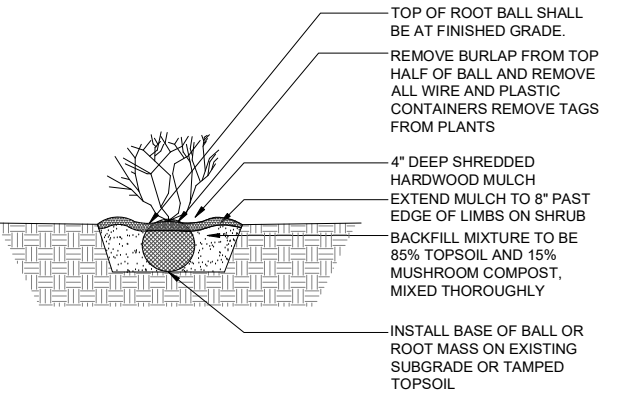
1 Perennial & Ornamental Grass Installation

SCALE: 1" = 1'-0" d-perennials



2 Tree Installation

SCALE: N.T.S. d-plant-tree_12



3 Shrub Installation

SCALE: N.T.S. d-plant-shrub_12

GENERAL NOTES: LANDSCAPE

- Notes indicated on grading plans shall pertain to landscape plans. Final grade of planting beds shall be as per grading plan.
- The landscape contractor shall be responsible for making themselves familiar with all underground utilities and structures.
- All existing plant material and trees shall be saved and protected unless otherwise noted. Contractor to protect new and existing trees and landscaping from damage and shall restore all areas disturbed as a result of construction.
- Plant material shall be supplied from Northern Illinois nursery stock, shall be dug the planting season it is installed, and shall conform to the American Association of Nurseryman's standards.
- Plant material shall be size and type specified. Substitution of plant material shall be on a case by case basis and approved in writing by the Owner's Representative. In no case shall plant material be smaller than indicated in the plans.
- Do not willfully proceed with plantings as designed when it is obvious that obstructions and/or grade differences exist that may not have been known during the design process. Such conditions shall be immediately brought to the attention of the Owner's Representative.
- All plant material shall be inspected and approved by the Owner's Representative prior to the installation of any and all plant material.
- Plant locations shall be flagged in field with Owner's Rep. Final location of all plant material shall be subject to approval of the Owner's Representative prior to digging any holes. The landscape contractor is responsible for providing Owner's Representative with 48 hour minimum advance notice prior to planting.
- Plants shall be watered on the day they are planted and maintained with watering until final acceptance of the project.
- Apply a pre-emergent as per manufacturer's specification prior to installing mulch.
- Beds and tree rings (6" diameter) shall have 3" of hardwood shredded mulch applied and a 4" deep spade edge at lawn. Trees that are not located in beds, shall have a tree ring. Do not add compost nor roto-till within drip line of existing trees.
- Landscape plant material shall be guaranteed for 12 months from final acceptance. Any plant 1/3 dead or more shall be replaced under the guarantee.
- Contractor to prepare landscape beds by roto-tilling 2" of Mushroom Compost into new beds. Do not add compost nor roto-till within drip line of existing trees.
- Lawn Seeding shall be under favorable weather conditions, and shall follow dates in specification.
- Turf mixes shall be installed and lawn established at all disturbed areas.
- Do not overseed into mulch beds, and paving.
- Contractor shall restore all areas disturbed as a result of construction.

uplandDesign ltd

Park Planning and Landscape Architecture
1250 W 18th St, Chicago, Illinois 60608
24042 Lockport St, Plainfield, Illinois 60544
815-254-0091 www.uplanddesign.com

HAMILTON CONSULTING ENGINEERS, INC.

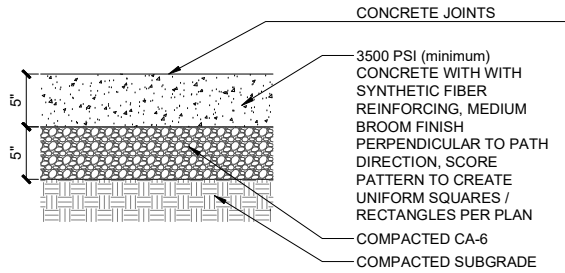
3230 Executive Drive, Joliet, Illinois 60431
Ph: (815) 750-3444 Fax: (815) 750-6703
ILL. LICENSE NO. 184-003036
© 2019 HAMILTON CONSULTING ENGINEERS, INC.

CITY CENTER CAMPUS
PARKING LOT AND PLAZA
LANDSCAPE PLAN

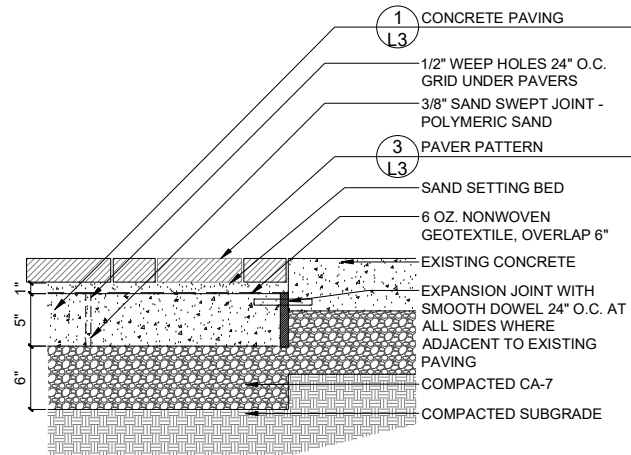
JOLIET JUNIOR COLLEGE
1215 HOUBOLT RD
JOLIET, IL 60431

SCALE	1" = 20'
DATE	03-01-2021
DESIGN	CHECKED
DRAWN	
PROJECT NO.	20904
SHEET	L2 OF L3

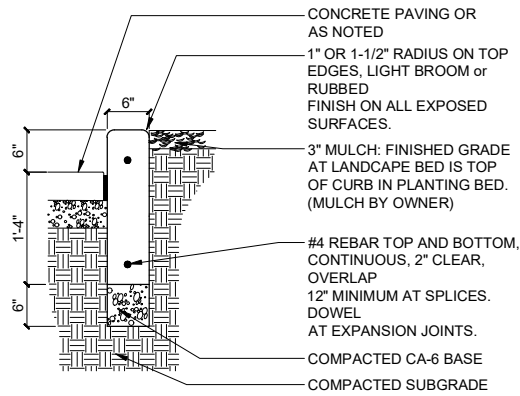
W:\860-JJC Parking-Hamilton Consulting Engineers\30-CO-files\20904_borders_upland.dwg
1/12/2021 2:54 PM
AZIBERT



1 Concrete Paving
SCALE: 1 1/2"=1'-0"
d-conc pav-5_8

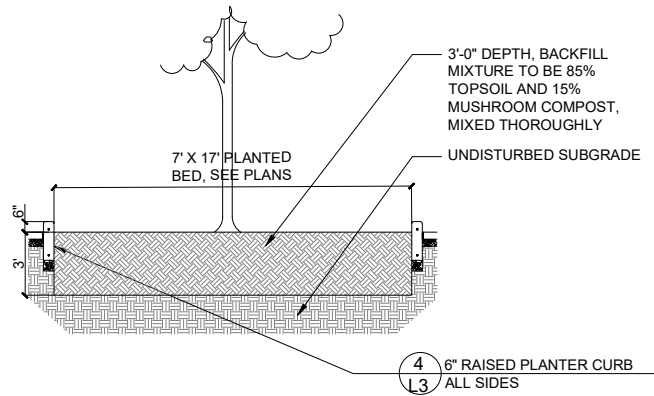


2 Pavers on Concrete
SCALE: 1 1/2"=1'-0"
d-paver on concrete entry_8.dwg

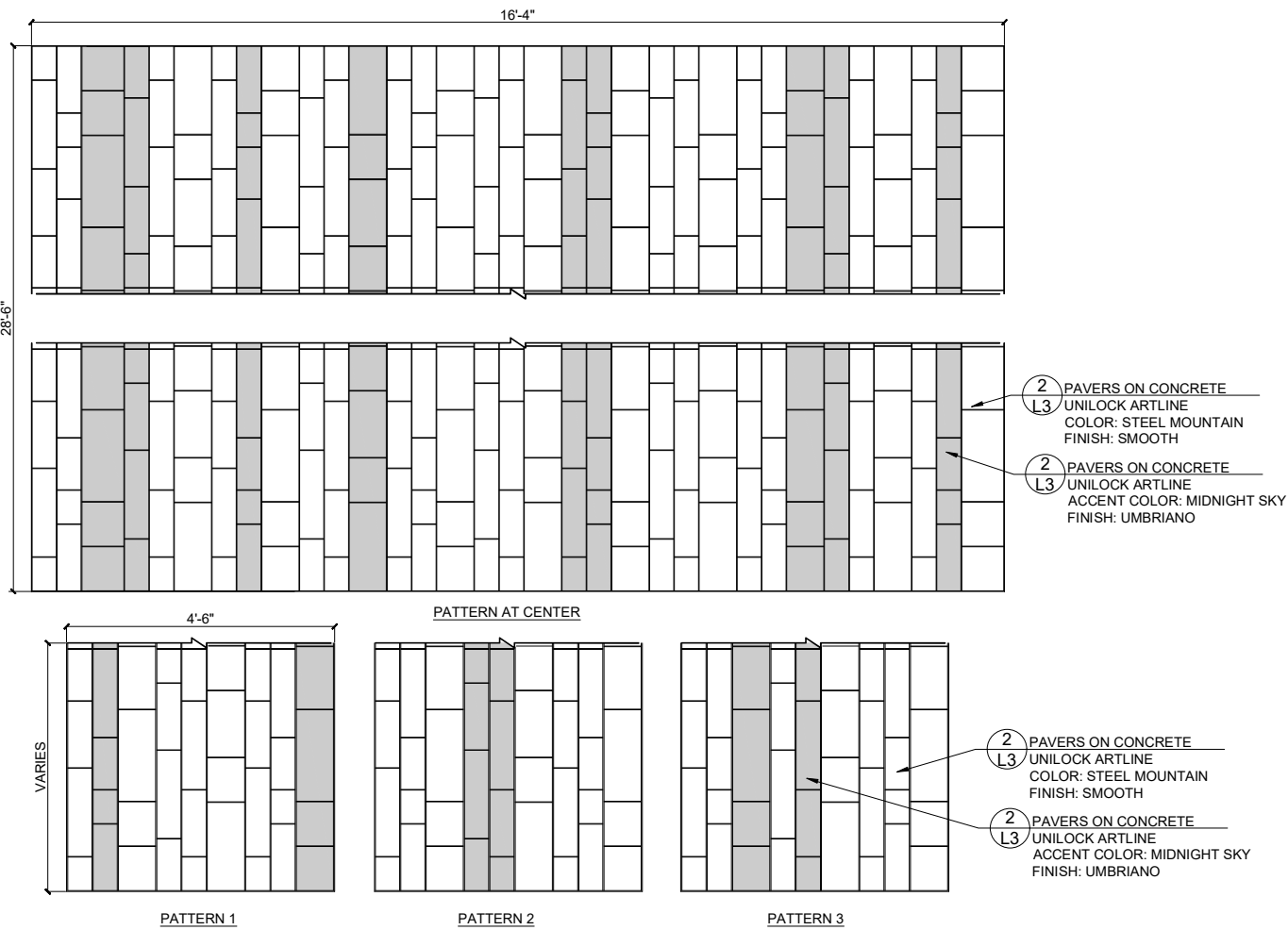


NOTES:
1. CONTRACTION JOINTS TO 10' O.C. MAXIMUM
2. EXPANSION JOINTS TO BE 30' O.C. MAXIMUM

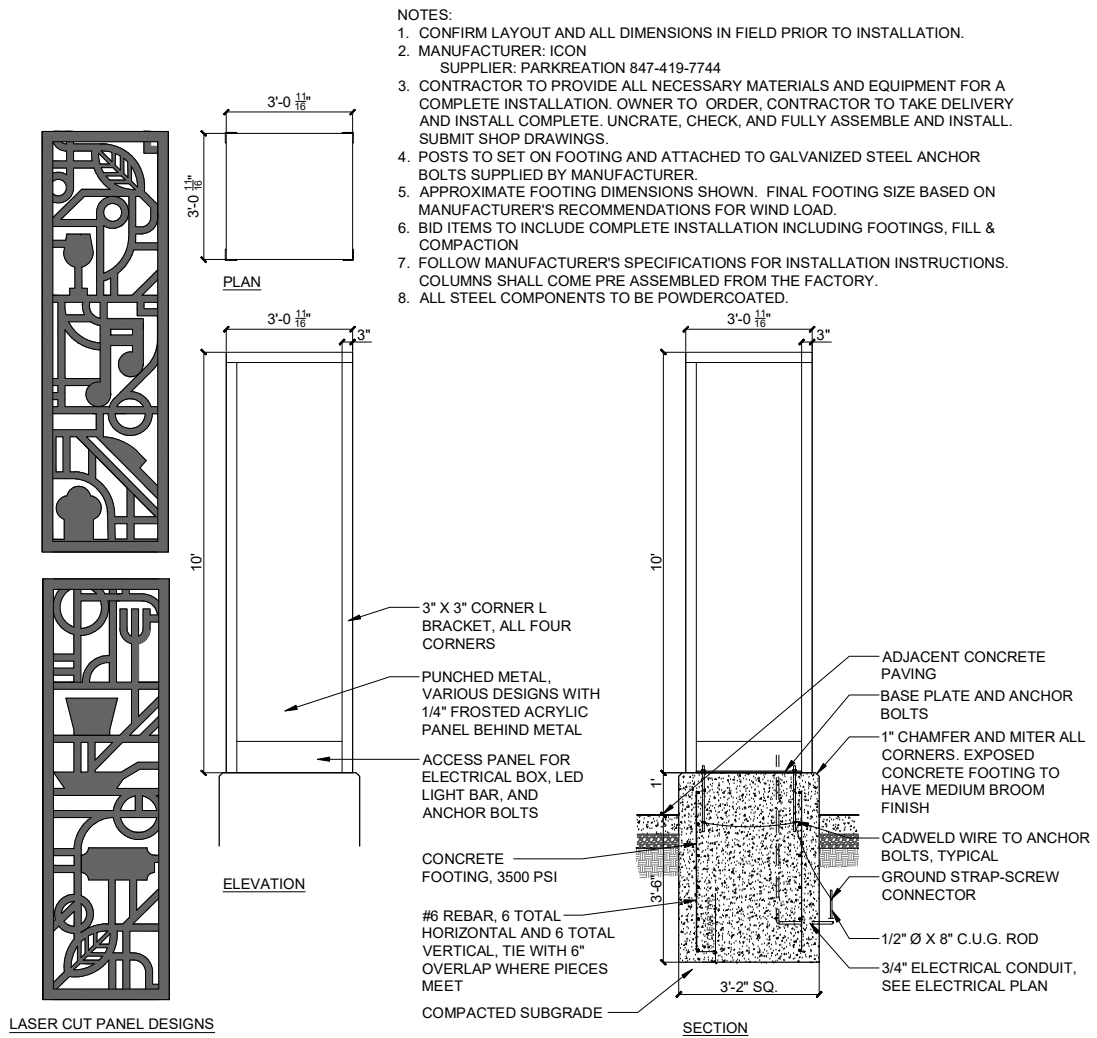
4 6" Raised Planter Curb
SCALE: 1"=1'-0"
d-curb_landscape bed_1_12.dwg



5 Planter Bed Section
SCALE: 1/4"=1'-0"
d-detail name_48



3 Paver Pattern
SCALE: 3/4"=1'-0"
d-paving PATTERN_16



6 Light Column
SCALE: 1/2"=1'-0"
d-light column_24

uplandDesign Ltd
Park Planning and Landscape Architecture
1250 W. 18th St, Chicago, Illinois 60608
24042 Lockport St, Plainfield, Illinois 60544
815-254-0091 www.uplanddesign.com

HAMILTON CONSULTING
ENGINEERS, INC.
3330 Executive Drive, Joliet, Illinois 60431
Ph: (815) 730-3444 Fax: (815) 730-6703
ILL. LICENSE NO. 184-003026
© 2018 HAMILTON CONSULTING ENGINEERS, INC.

CITY CENTER CAMPUS
PARKING LOT AND PLAZA
DETAILS

JOLIET JUNIOR COLLEGE
1215 HOUBOLT RD
JOLIET, IL 60431

SCALE
1"=20'
DATE
03-01-2021
DESIGN
CHECKED
DRAWN
PROJECT NO.
20904
SHEET
L3 OF L3