



Addendum No. 1
Page 1 of 2

DATE: February 5, 2020

Joliet Junior College
1215 Houbolt Road
Joliet, IL 60431

TO: Prospective Bidders
SUBJECT: Addendum No. 1
PROJECT NAME: Romeoville B Entrance Canopy
JJC PROJECT NO.: B20016

This Addendum forms a part of the Bidding and Contract Documents and modifies the original bidding document as posted on the JJC website. Acknowledge receipt of this addendum in the space provided on the Bid Form. FAILURE TO DO SO MAY SUBJECT BIDDER TO DISQUALIFICATION.

1. Drawing A-101, PARTIAL FLOOR PLAN, ELEVATIONS, SECTIONS AND DETAILS (Drawing revision dated 2/4/2020 is included with this addendum.)
 - a. Drawing 5/A-101, titled, ELEVATION - B.
 1. INCREASE HEIGHT OF AMC PANEL ABOVE STOREFRONT ENTRANCE:
 - a. REVISE HEIGHT OF AMC PANEL TO 3'-4".
 2. Details 10/A-101 & 11/A-101 & 14/A-101 & 17/A-101 & 18A-101, titled correspondingly, DETAIL - METAL PANEL CONNECTION & DETAIL - METAL PANEL CONNECTION AT BASE & DETAIL - AT TOP OF COLUMN & DETAIL - FLASHING AT TOP OF CANOPY & DETAIL - FLASHING AT TOP OF CANOPY
 - a. At LOCATION OF WEATHER BARRIER:
 - i. ADD $\frac{3}{4}$ " PLYWOOD AND WOOD BLOCKING AS INDICATED ON DRAWINGS
 - ii. REVISE DIMENSIONAL WOOD BLOCKING.
 - iii. RELOCATED WEATHER BARRIER OVER PLYWOOD
 3. Drawing 16/A-101, titled, DETAIL - METAL PANELS AT BEAMS.
 - a. AT BOTTOM OF BEAMS - REVISED WEEPING SOLUTION:
 - i. REVISE METAL PANEL. IN LIEU OF AMC METAL PANEL PROVIDE BRAKE METAL TO MATCH AMC PANEL COLOR.
2. Specification section 02 41 00 2.02 A 1 of the project documents called "obtain the required permit." We were told during the pre-bid that only the Architect would inspect the work; no permits nor inspection will be required from the Romeoville village. Please confirm.
 - a. *Answer: No permits or inspections are required from the Village of Romeoville.*
3. Please confirm all the subcontractors must be union subcontractors.
 - a. *Answer: All tradesmen require union affiliation per the bid documents under the Labor Management Project Agreement.*

Addendum No. 1

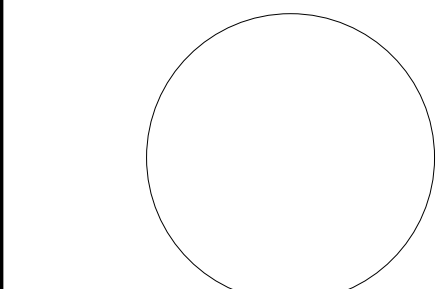
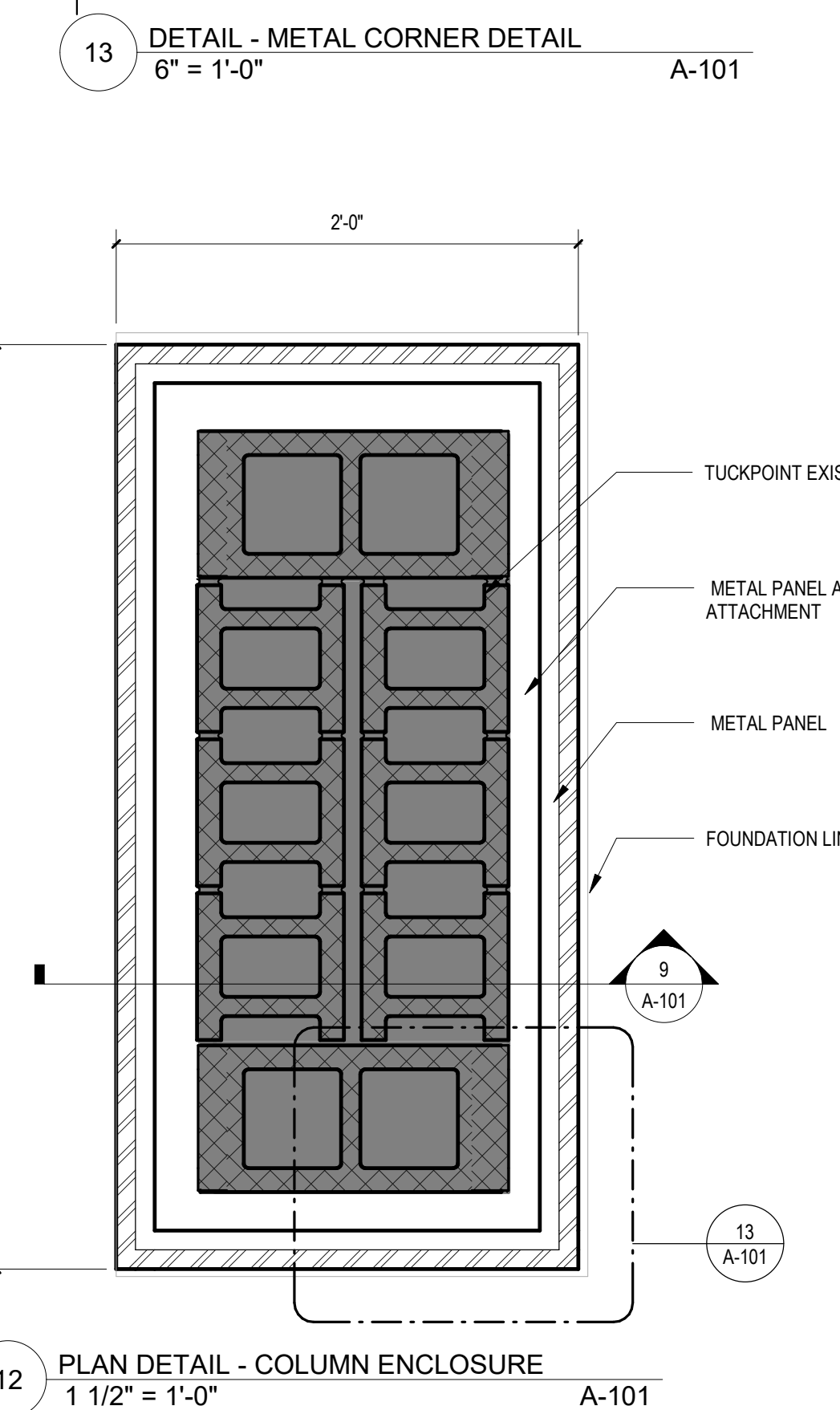
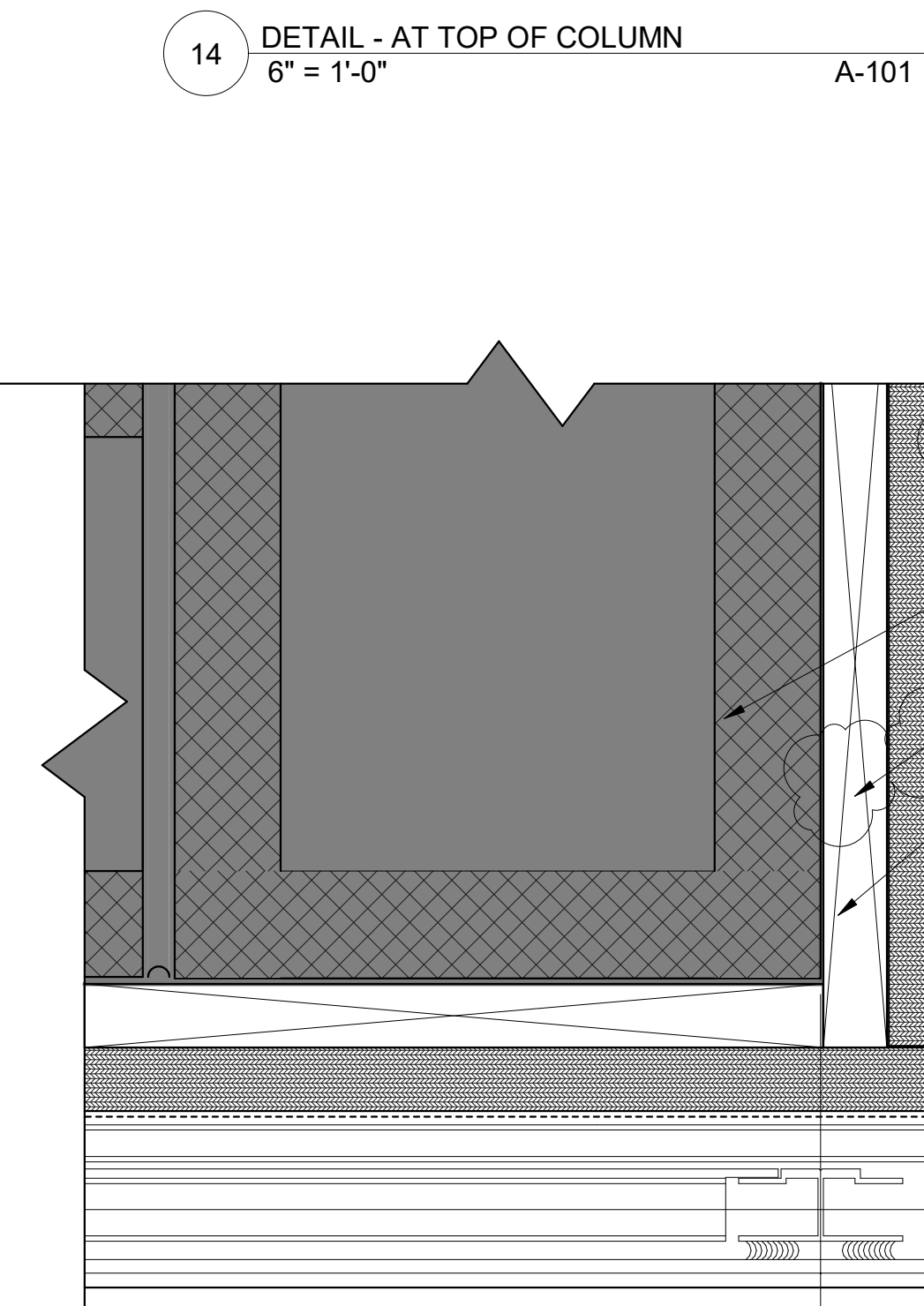
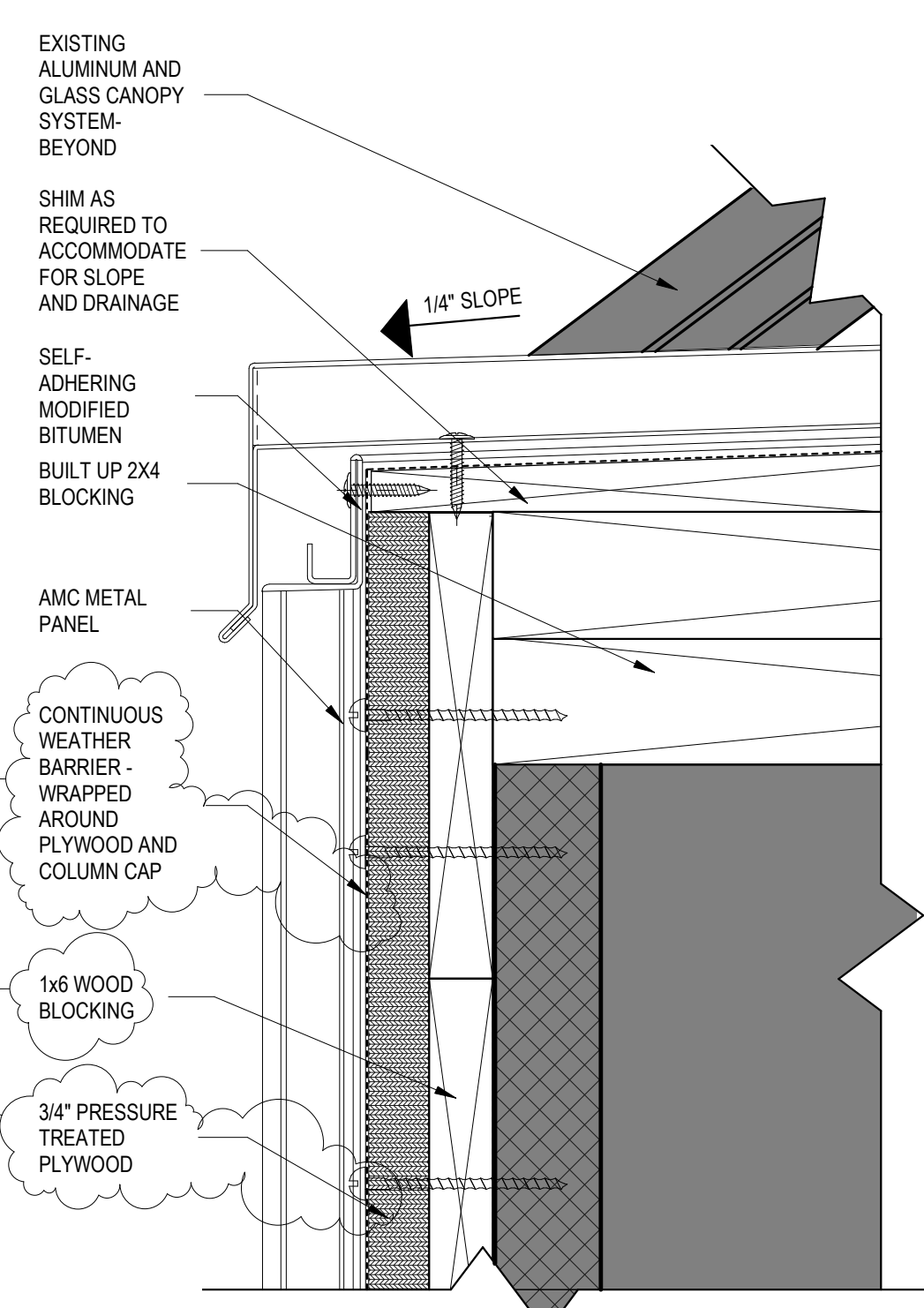
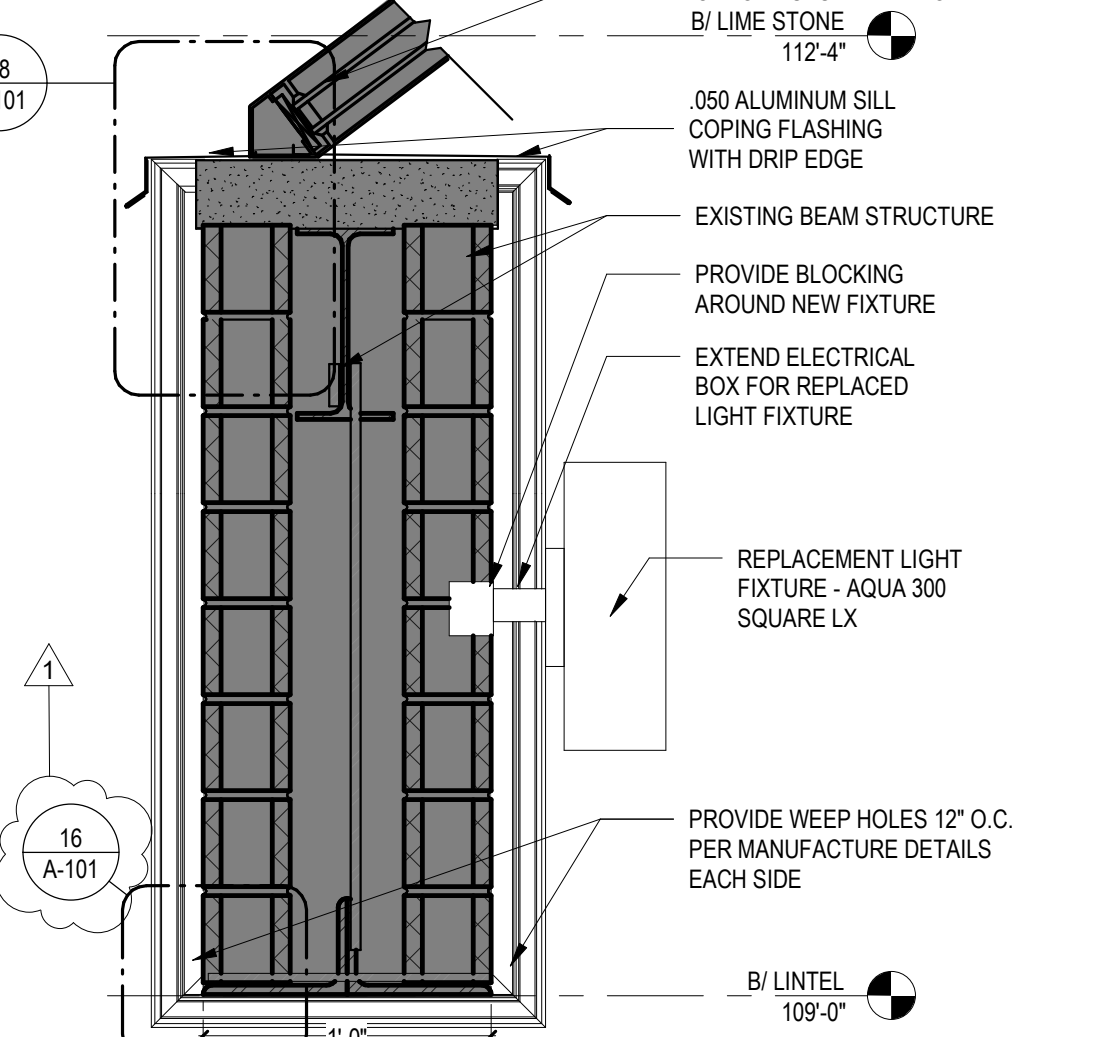
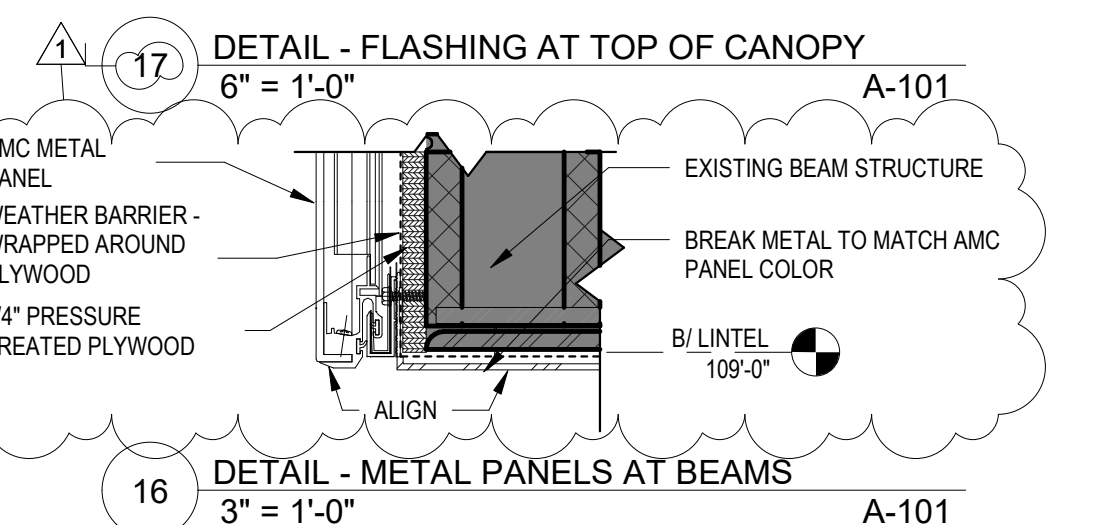
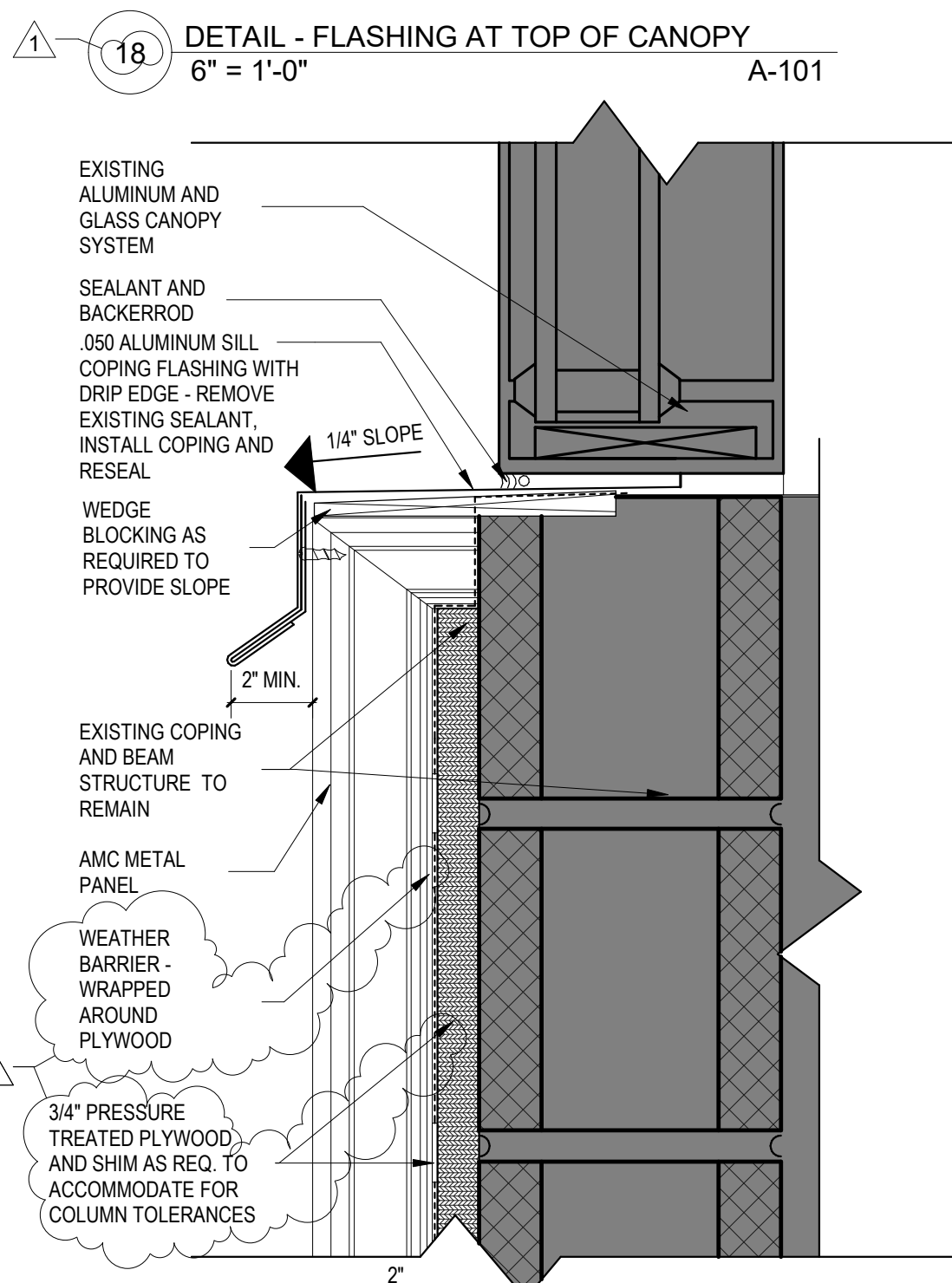
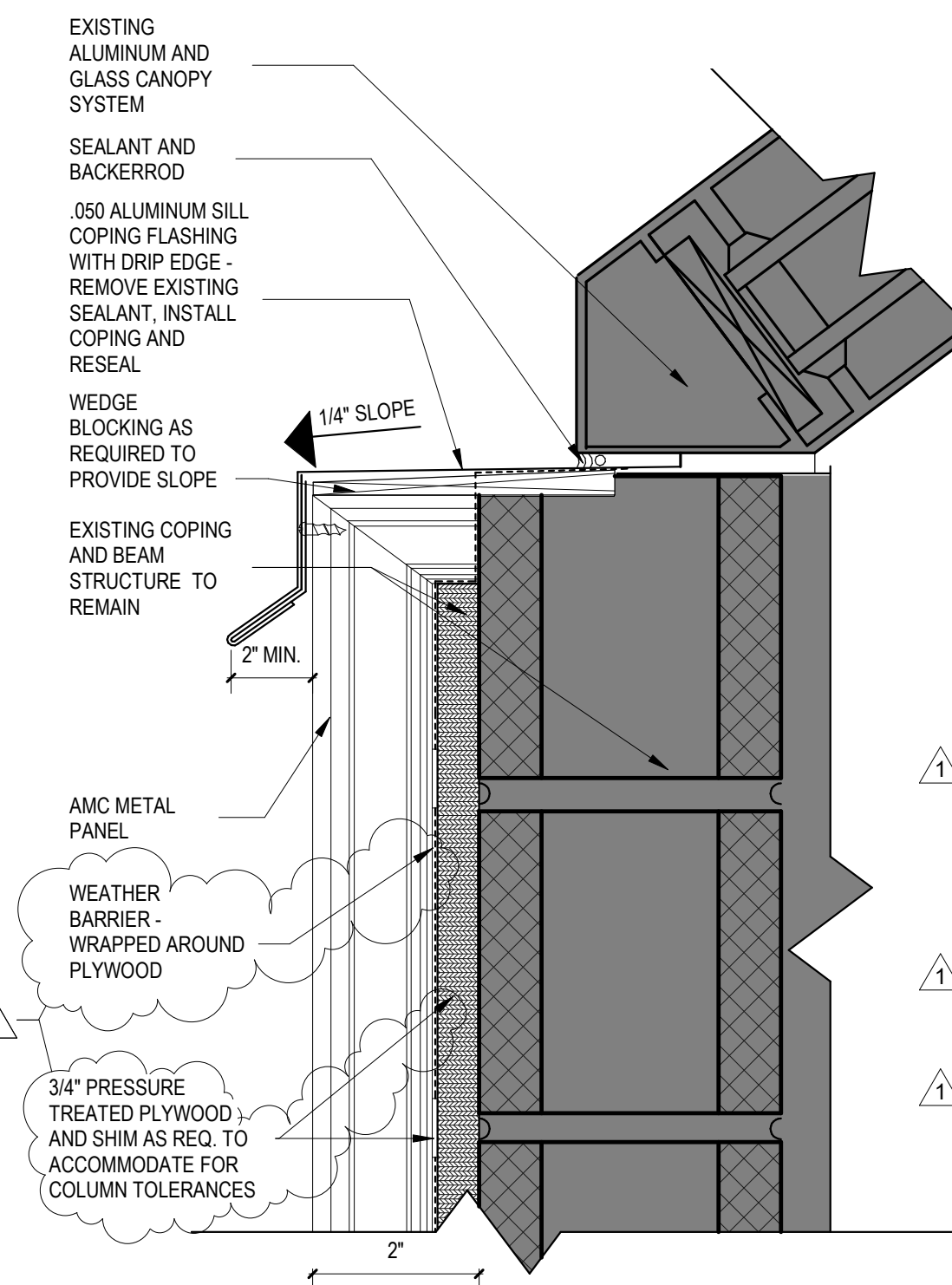
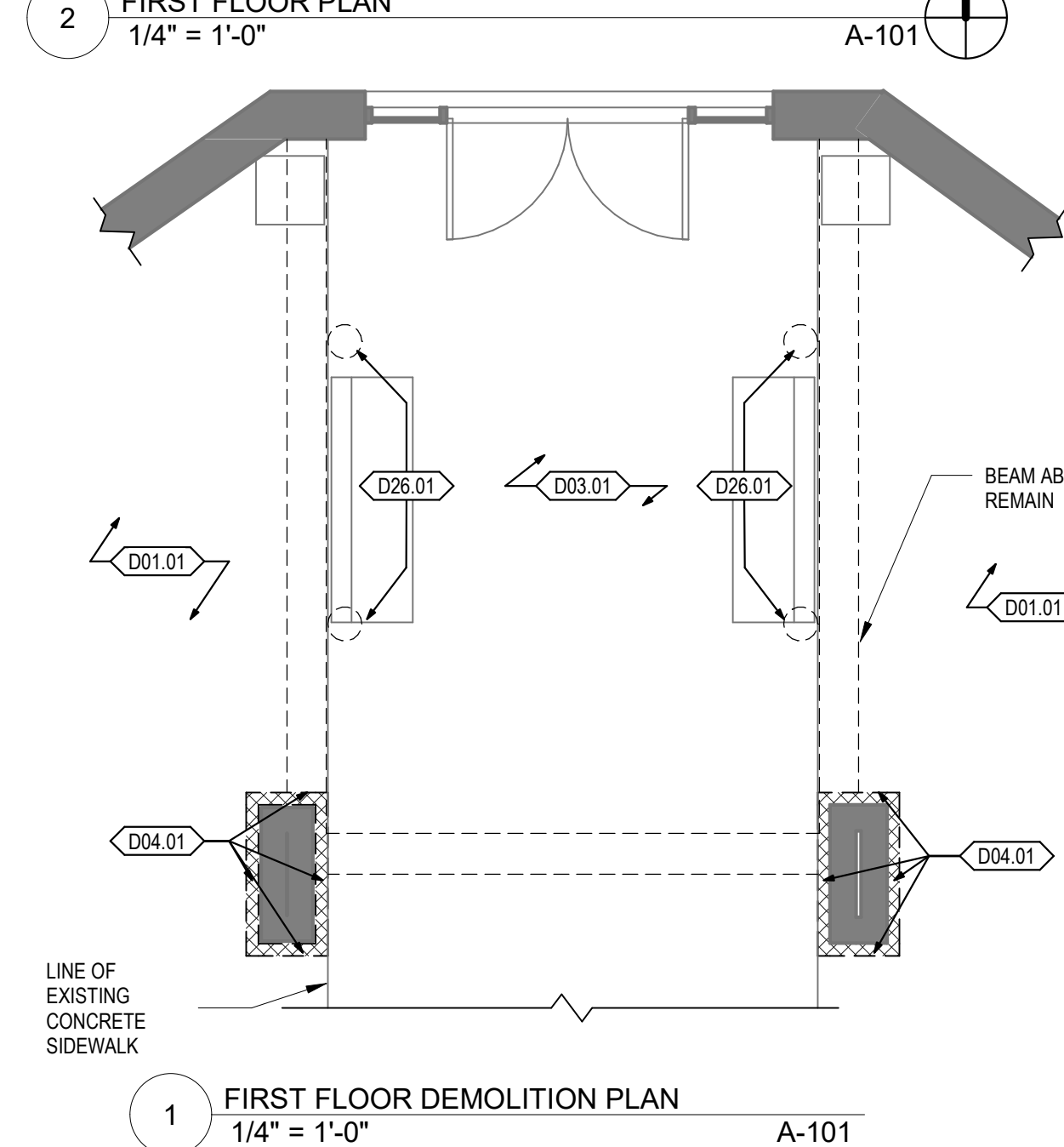
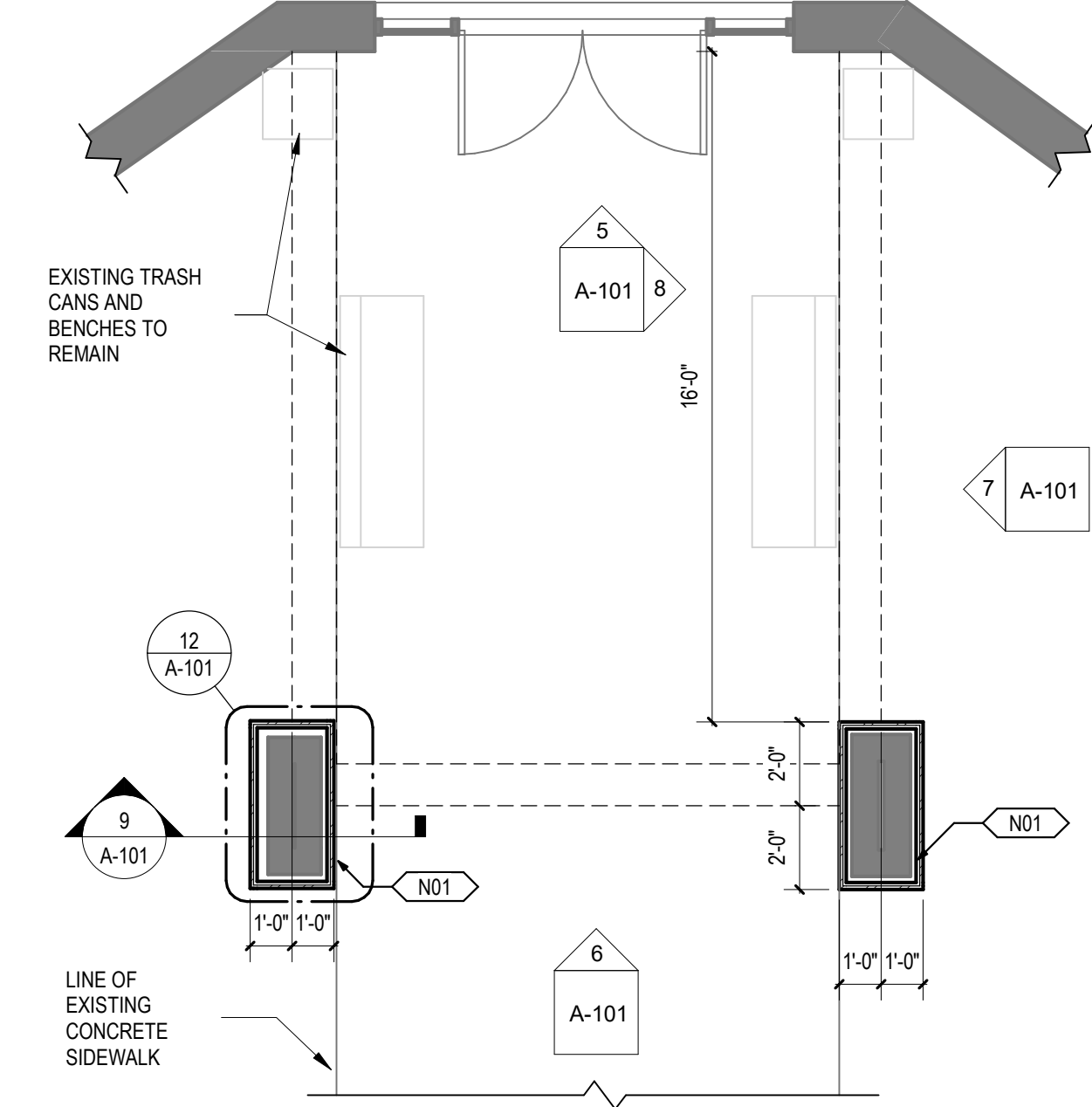
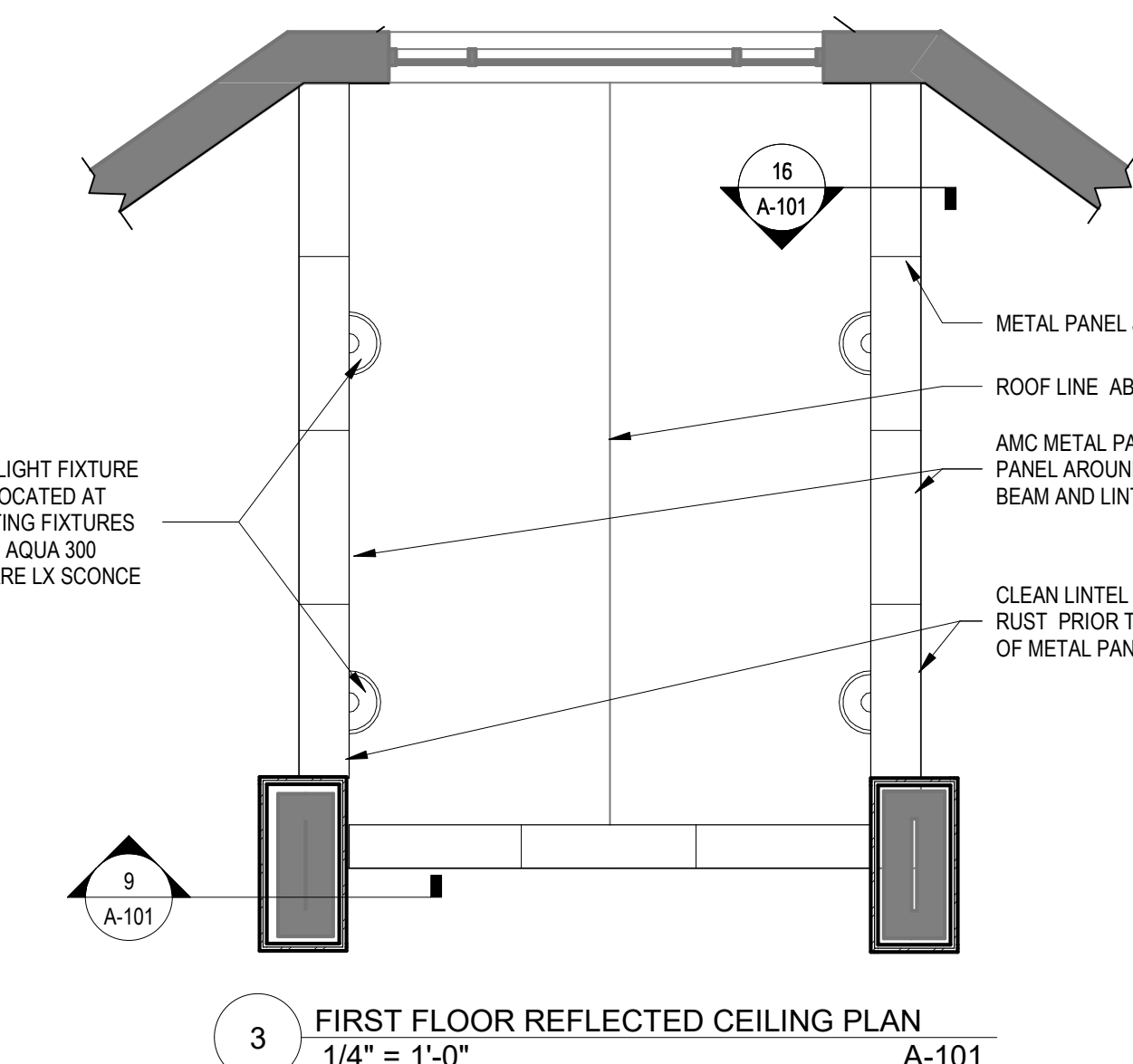
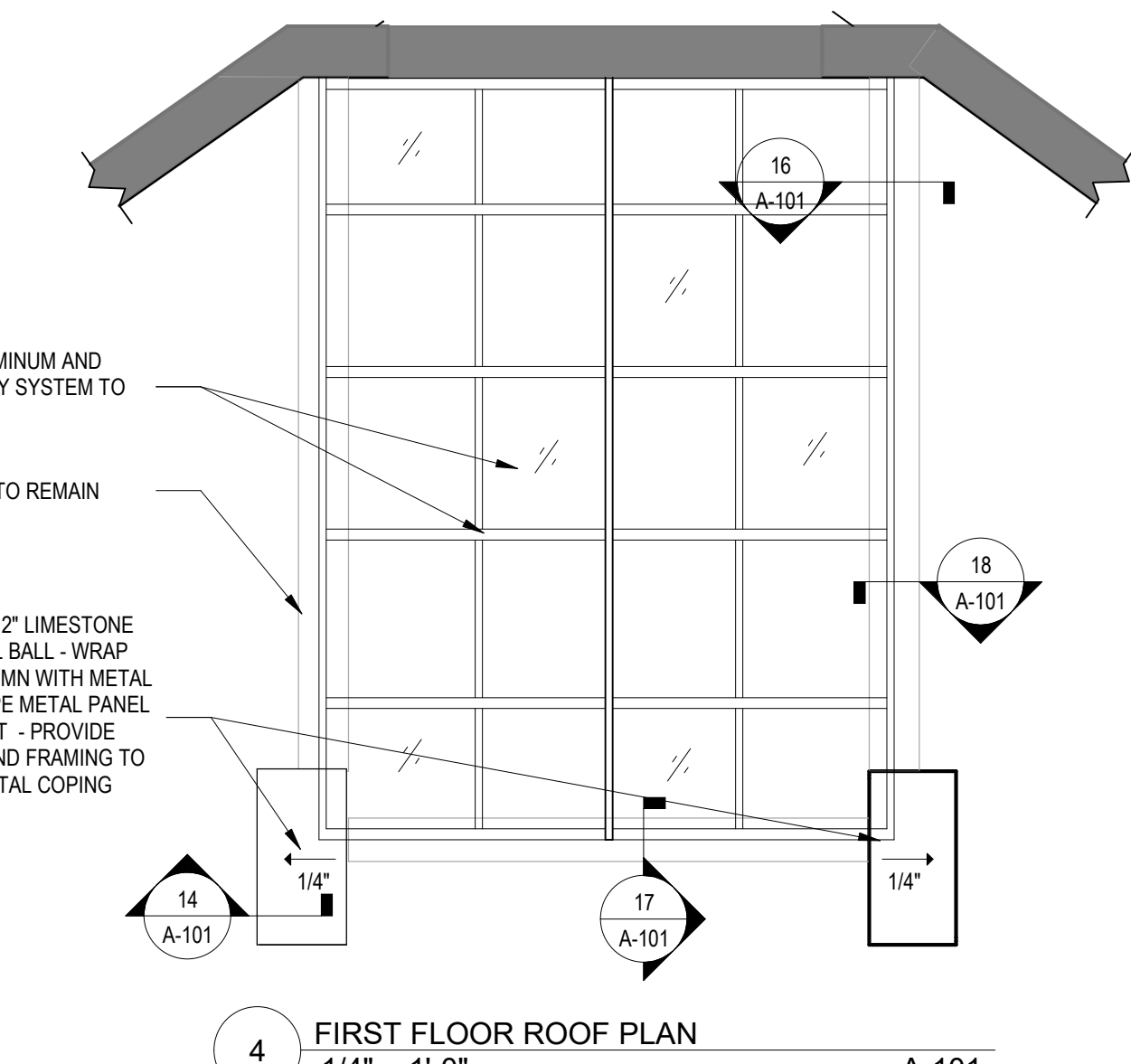
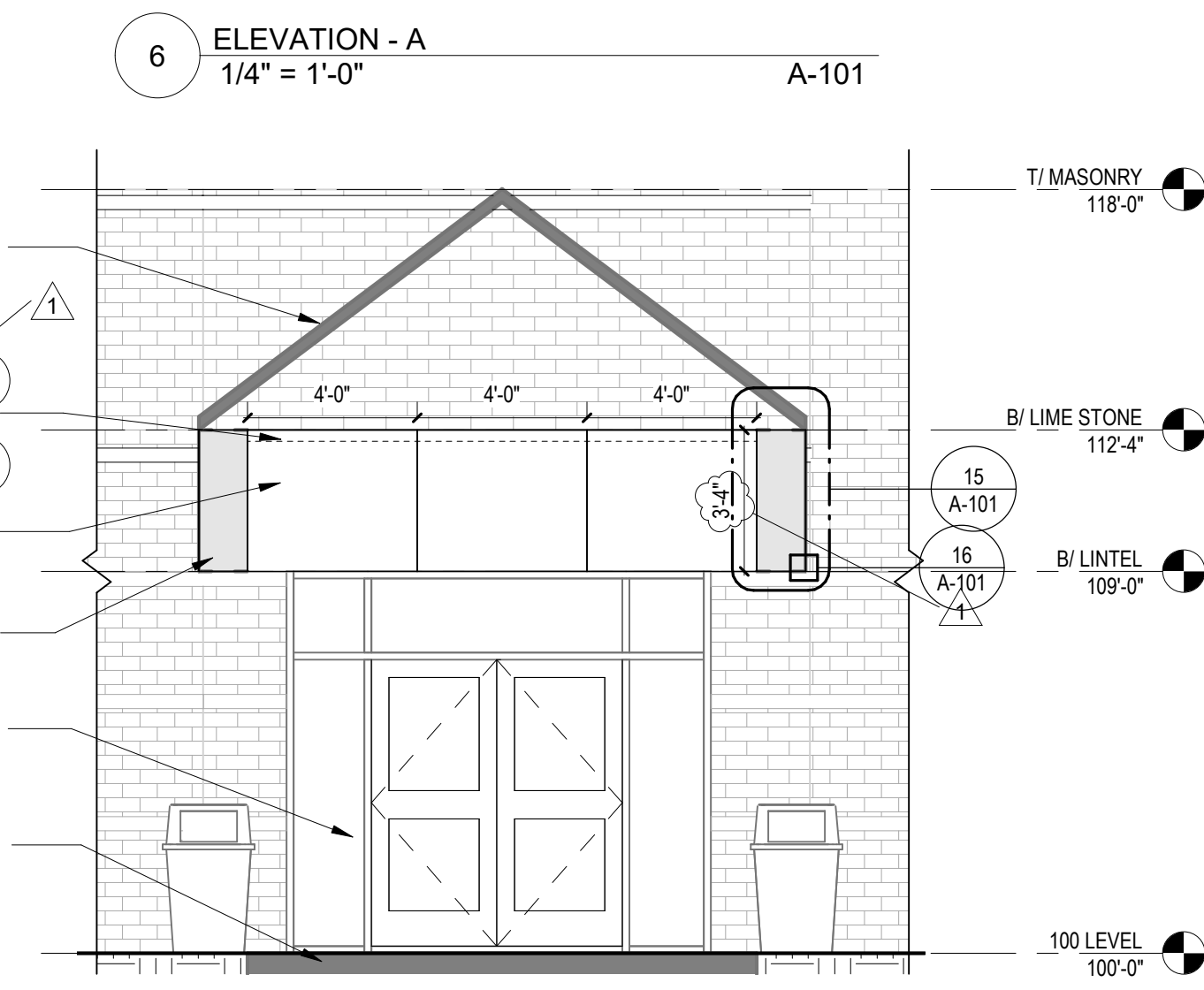
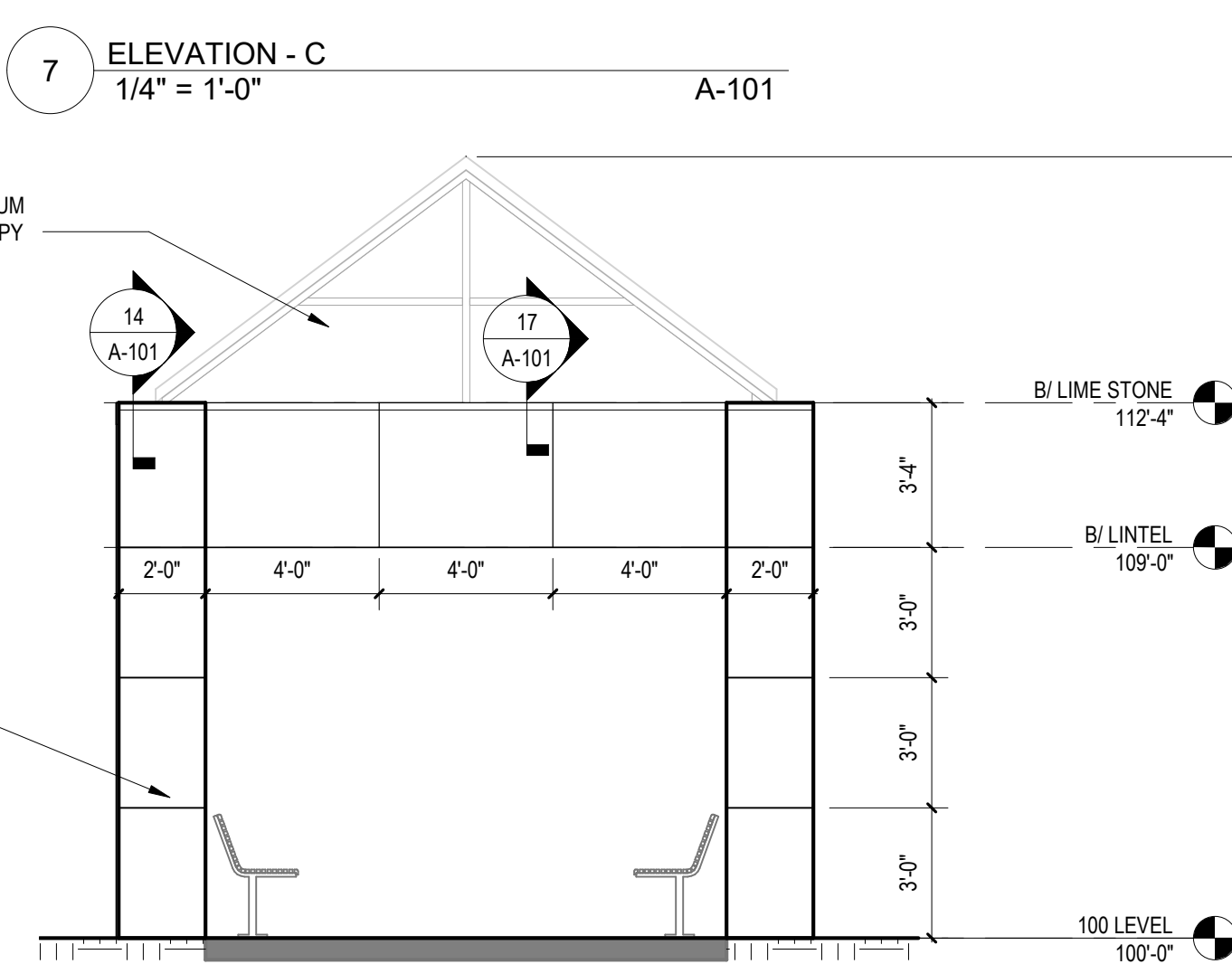
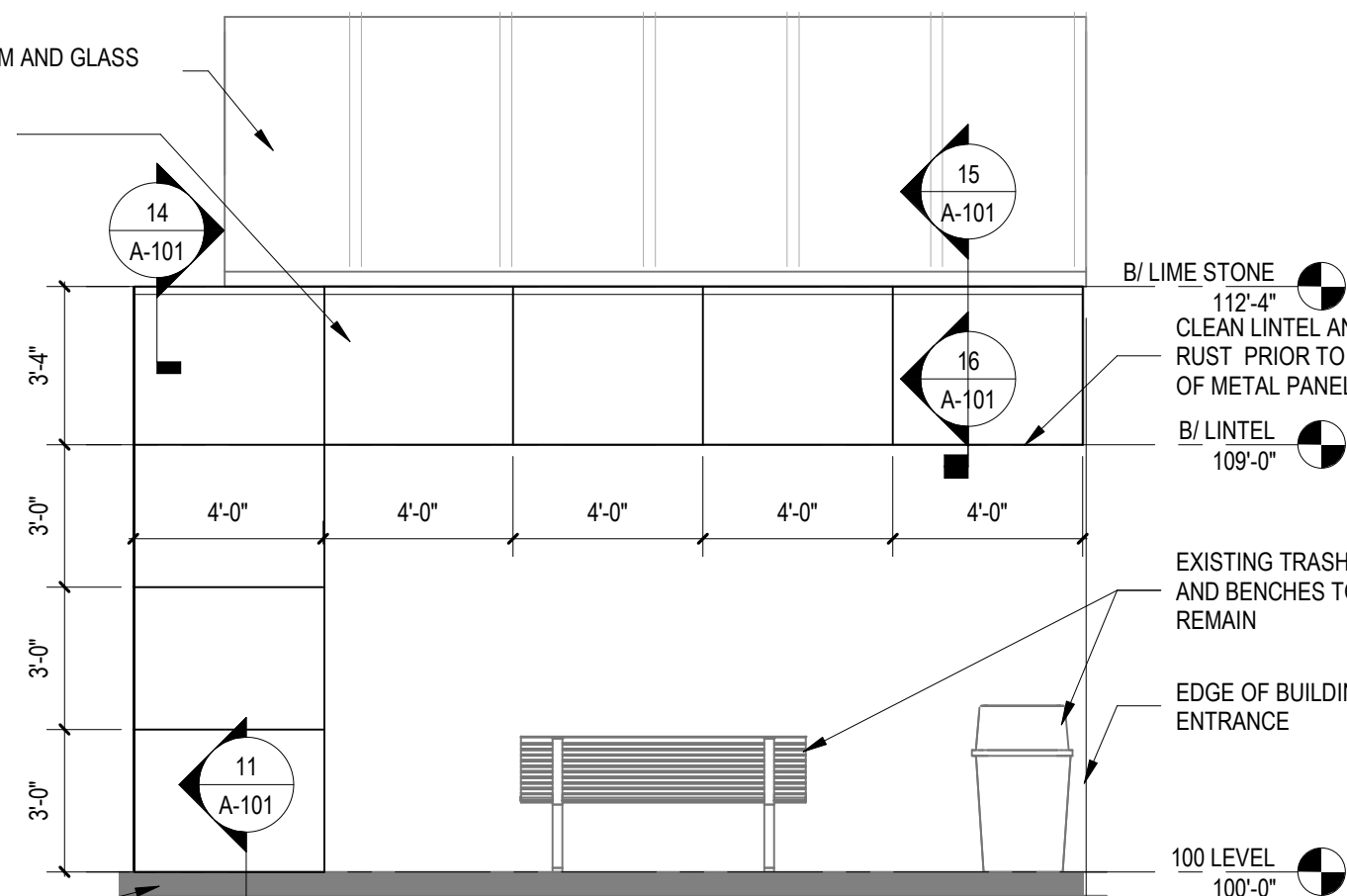
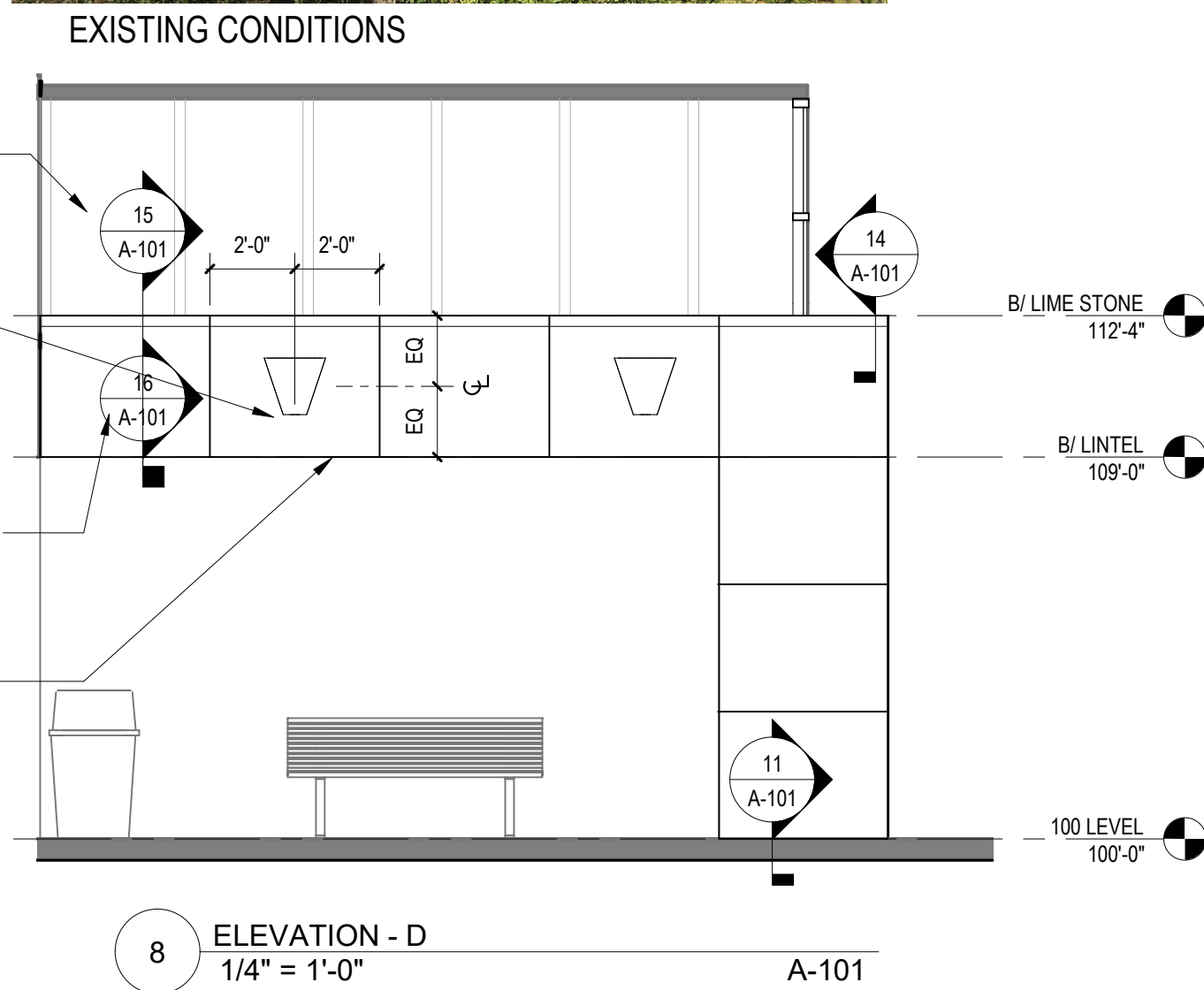
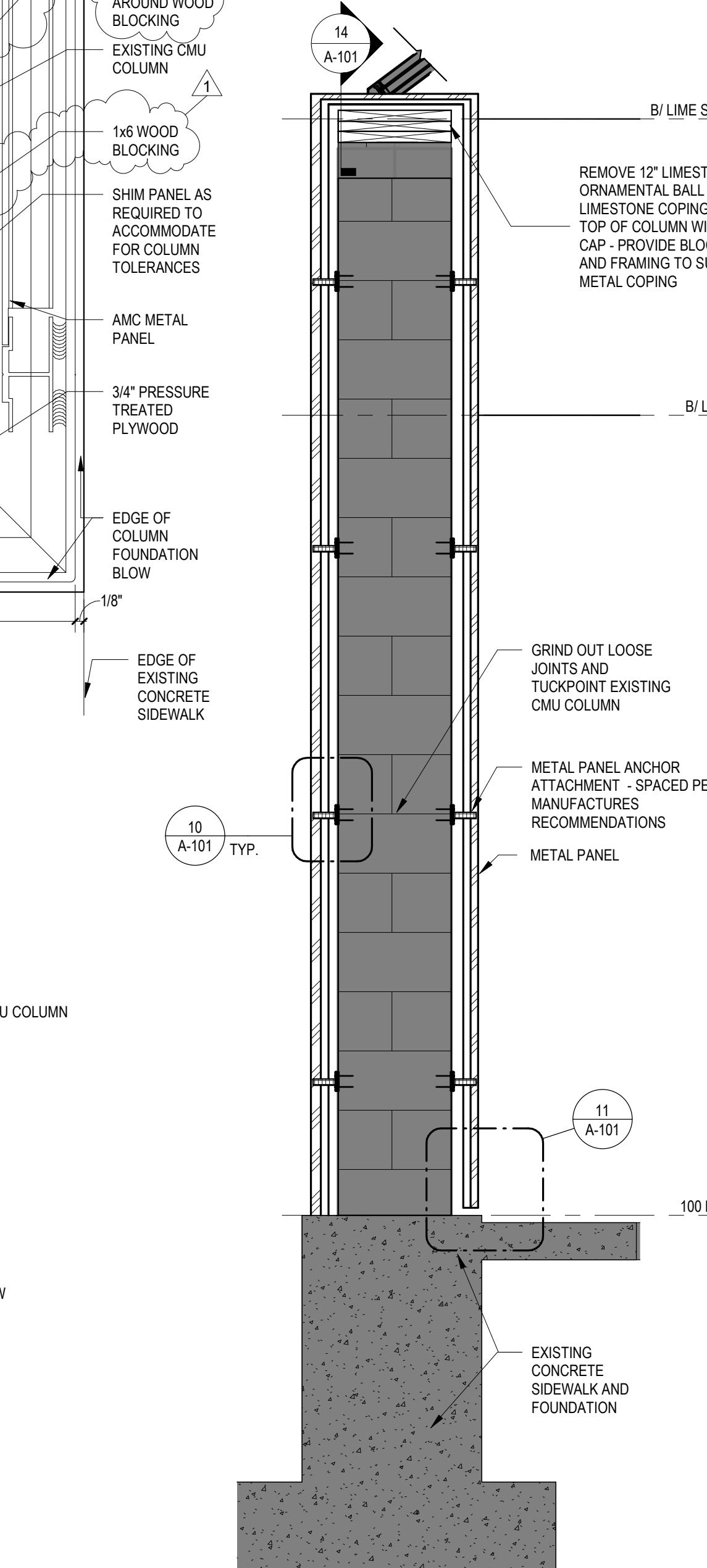
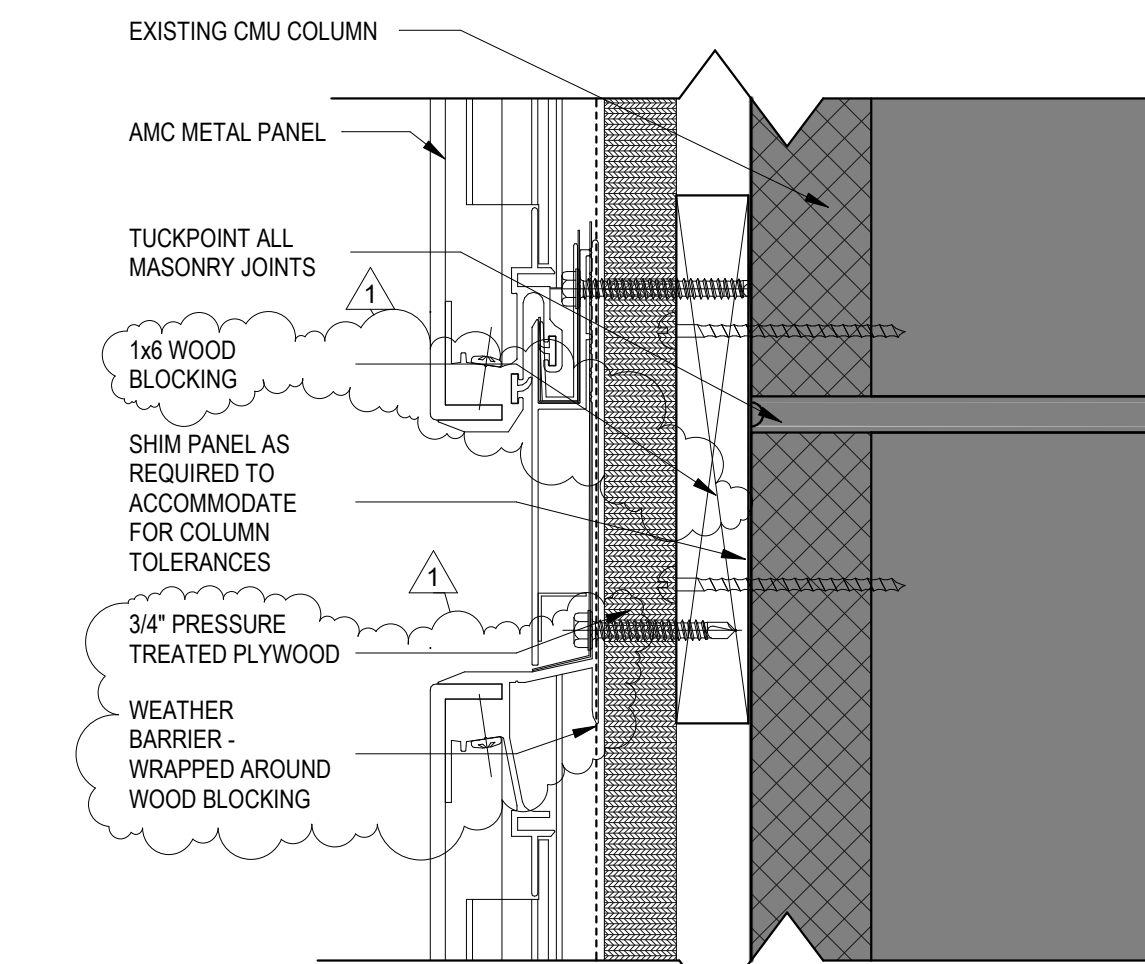
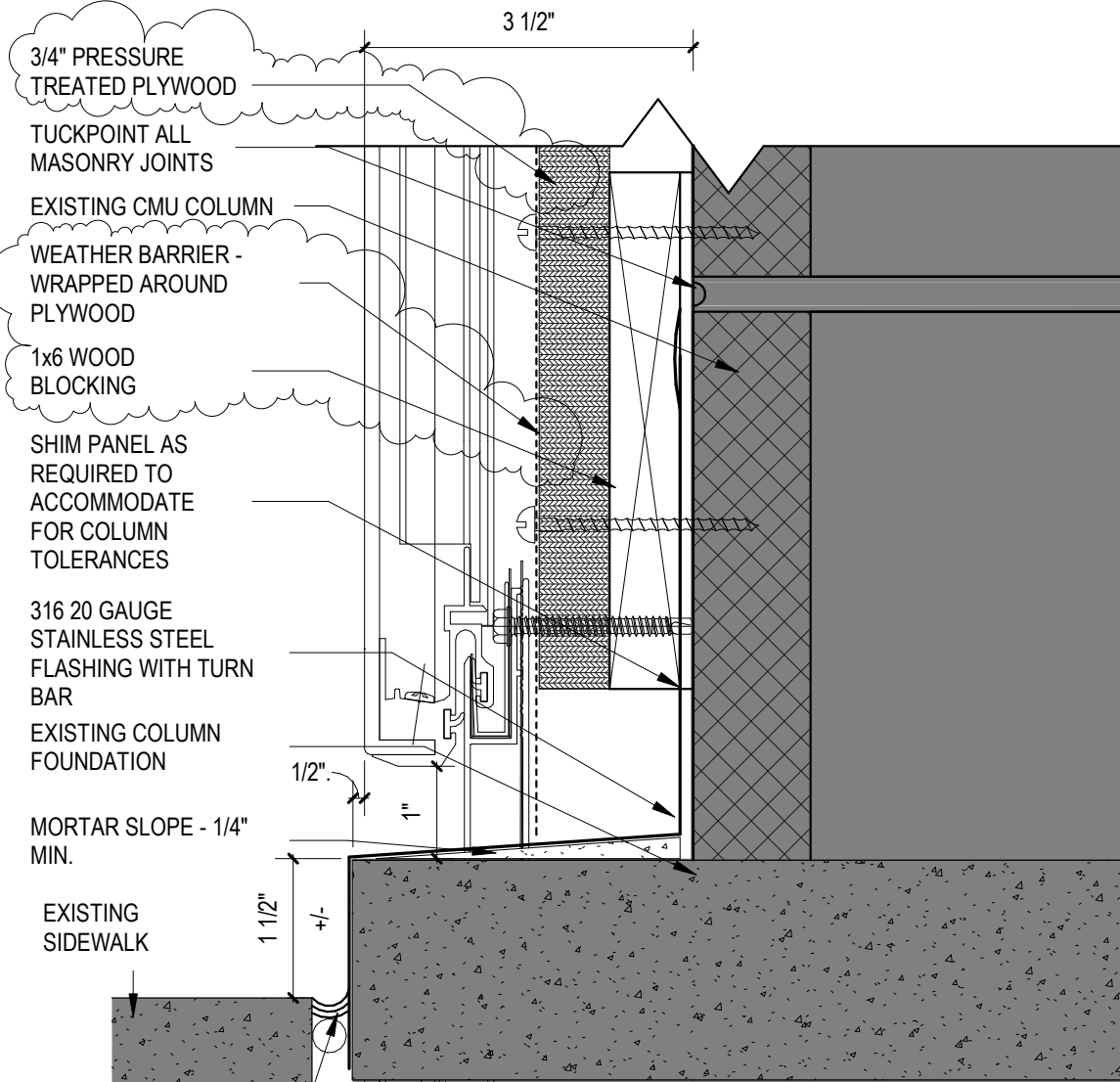
Page 2 of 2

4. We were told; the entrance B will be closed during the construction. Are we to provide temporary fencing around the construction area?
 - a. *Answer: No fencing is required, but you will need to provide barricades to block students and staff from using this entrance. Emergency egress must be maintained through the construction zone.*
5. Who is the current landscaping maintenance contractor at the college campus? Please provide the contact information.
 - a. *Answer: Landscaping maintenance is performed in-house. Contractor will have to hire a landscaping contractor to restore the landscaping back to its original state after construction on the canopy has been completed.*
6. Please confirm all the demo activity must be after hours (10 PM to 6 AM), as mentioned during the pre-bid.
 - a. *Answer: This is covered in the bid documents under the Preconstruction Conference Checklist under the Performance section B.4.*

End of Addendum #1

ARCHITECTURAL PLAN NOTES < N01 >	
NOTE	DESCRIPTION
N001	PROVIDE METAL PANEL AND ATTACHMENT SYSTEM

DEMOLITION NOTES	
NOTE	DESCRIPTION
D1.01	EXISTING LANDSCAPE TO REMAIN. PROVIDE PROTECTION DURING CONSTRUCTION
D3.01	PROTECT ALL CONCRETE SIDEWALK DURING DEMOLITION AND CONSTRUCTION
D4.01	REMOVE FACE BRICK AND ALL ASSOCIATED COMPONENTS
D5.01	REMOVE EXISTING LIGHTING FIXTURE AND RETURN TO OWNER



SIGNATU

DAT

REVISIONS		
NO.	DESCRIPTION	DATE
1	Addendum 1	2/4/2020

PROJECT 21915900.00
DATE OF ISSUE 12.20.19
DRAWN BY JMK
CHECKED BY ML

PARTIAL FLOOR PLAN,
ELEVATIONS, SECTIONS
AND DETAILS

A-101
ISSUE FOR BID