



Addendum No. 1
Page 1 of 1

DATE: May 11, 2018

Joliet Junior College
1215 Houbolt Road
Joliet, IL 60431

TO: Prospective Bidders
SUBJECT: Addendum No. 1
PROJECT NAME: Center for Excellence Remodel
JJC PROJECT NO.: B18011

This Addendum forms a part of the Bidding and Contract Documents and modifies the original bidding document as posted on the JJC website. Acknowledge receipt of this addendum in the space provided on the Bid Form. FAILURE TO DO SO MAY SUBJECT BIDDER TO DISQUALIFICATION.

JJC Items:

First floor offices D1004B and D1004C, as well as second floor office C2019C must be completed no later than July 20th. This may require the contractor to have subs mobilize out of sequence with first floor work in the D1005 area. It is understood that millwork cabinetry for D1004C may not be ready by July 20th, this is acceptable, but must be installed by the substantial completion date for the remainder of the project.

Questions Received:

1. Builder's Risk Insurance, is this required since it is not new construction? Our installation floater will more than satisfy the work to be performed for this project.
Awarded contractor is responsible to provide any and all insurance as described in the bid documents.
2. The height and width of the southernmost windows will not allow a manual shade to lift the weight of the fabric. This can be resolved by splitting each window into 2 separate units.
Window shades at south windows may be split into two separate units.
3. The ceiling height says 15'. I do not see a detail on the soffit. May I please receive an elevation drawing showing a different height for the windows?
The reflected ceiling plan shows the elevations and keynote 9.947 provides the construction information. No additional drawings needed or will be provided.
4. Is there any type of Fascia or pocket needed? If so, will there be blocking provided? Typically, drilling into window mullions will void the warranty.
Manufacturer's standard fascia panel is required at head.

Changes to Drawings:

1. See the attached revised Sheets (refer to revision cloud 1).
 - a. A210, A310, A810, ME310.

End of Addendum #1



KEYNOTES ARE NOT ALWAYS REPEATED ACROSS ALL DRAWINGS ON THIS SHEET. AN UN-KEYNOTED ITEM ON THIS SHEET IS THE SAME AS A KEYNOTED ITEM ON THIS SHEET HAVING THE SAME GRAPHIC APPEARANCE

- ## ROOM SCHEDULE

GENERAL NOTES

1. REFER TO DRAWING G100 FOR PROJECT GENERAL NOTES.
2. UNLESS NOTED OTHERWISE, WHERE EXISTING FLOOR, WALL, AND CEILING SURFACES ARE SCHEDULED TO RECEIVE FINISH, DISMANTLE EXISTING FINISH MATERIALS (EXCEPT PROPERLY ADHERED PAINT) AND SALVAGE SURFACE-MOUNTED ITEMS; PROPERLY PREPARE SURFACES TO RECEIVE NEW FINISHES; REINSTALL SURFACE-MOUNTED ITEMS AT NEW LOCATIONS DETERMINED BY OWNER UNLESS SPECIFIC LOCATIONS ARE INDICATED ON DRAWINGS.
3. STORE SALVAGED ITEMS AS DIRECTED BY OWNER.
4. REMOVE SALVAGED ITEMS THAT WILL NOT BE RE-USED TO OWNER'S DESIGNATED PERMANENT STORAGE LOCATION ON SITE.
5. REMOVE SALVAGED ITEMS THAT WILL ULTIMATELY BE RE-USED ON THIS PROJECT TO OWNER'S DESIGNATED TEMPORARY STAGING AREA ON SITE.
6. PROTECT SALVAGED ITEMS FROM DAMAGE UNTIL INCORPORATED INTO THE WORK OR UNTIL MOVED TO OWNER'S PERMANENT STORAGE.
7. ADDITIONAL DEMOLITION/RECONSTRUCTION AND REMOVAL/REPLACEMENT OF ARCHITECTURAL ELEMENTS IS REQUIRED TO COMPLETE THE WORK OF THIS PROJECT. COORDINATE WITH ARCHITECTURAL, MECHANICAL, PLUMBING, ELECTRICAL AND OWNER, AND PROVIDE DEMOLITION/RECONSTRUCTION AND REMOVAL/REPLACEMENT OF ALL ELEMENTS AS REQUIRED TO COMPLETE THE WORK SHOWN ON THOSE DRAWINGS.

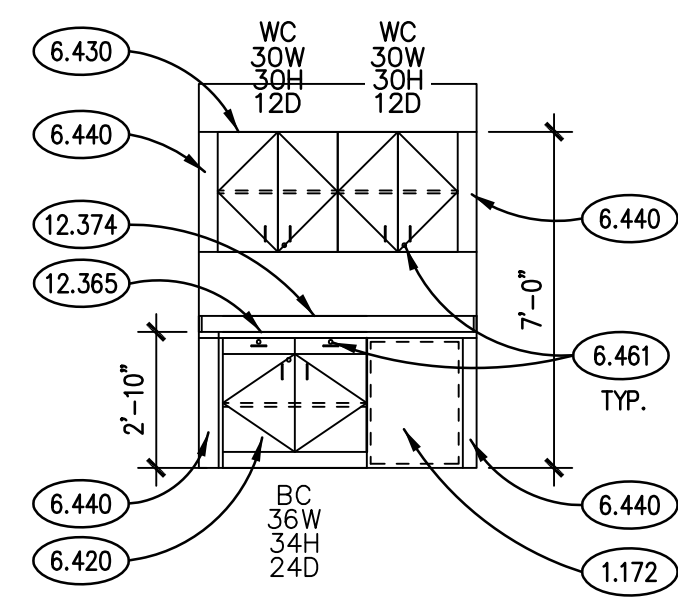
[illegible]

JOB NO.	18-292-118
DRAWN	VAD / PJT
CHECKED	CDH / JMB
APPROVED	CDH

SHEET TITLE
DEMOLITION PLANS ACADEMIC CENTER FOR EXCELLENCE AND SECOND FLOOR OFFICE

SHEET NUMBER

A210



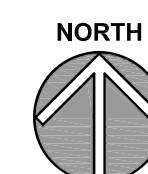
D1005D CASEWORK ELEVATION

SCALE: 1/4" = 1'-0"



SECOND FLOOR REFLECTED CEILING PLAN - OFFICE SPACE 4

SCALE: 1/8" = 1'-0"



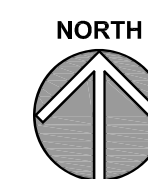
FIRST FLOOR REFLECTED CEILING PLAN - ACADEMIC CENTER FOR EXCELLENCE SCALE: 1/8" = 1'-0"



DIMENSIONS - ACADEMIC CENTER FOR EXCELLENCE 5
SCALE: 1/8" = 1'-0"




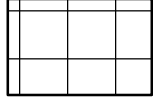



SECOND FLOOR PLAN - OFFICE SPACE



FIRST FLOOR PLAN - ACADEMIC CENTER FOR EXCELLENCE 1

GENERAL NOTES

SYMBOL	DESCRIPTION	SYMBOL	DESCRIPTION
	GYPSUM BOARD		LIGHT FIXTURES : 24"x24" LED;
			MECHANICAL DIFFUSER : SUPPLY
	ACOUSTICAL CEILING TILE : 24" X 24"		MECHANICAL DIFFUSER : RETURN

GENERAL NOTES

1. REFER TO DRAWING G100 FOR PROJECT GENERAL NOTES.
2. IN METAL STUD/GYPSUM BOARD PARTITIONS AND WALLS, PROVIDE 2X FIRE RETARDANT TREATED WOOD BLOCKING FOR WALL/MOUNTED ITEMS REQUIRING MECHANICAL ANCHORAGE.
3. REPAIR/PATCH ALL WALLS PRIOR TO PAINTING, INCLUDING ELECTRICAL AND DATA/IT DEVICES CURRENTLY SURFACE MOUNTED TO BE RECESSED INTO WALL CONSTRUCTION.

1. REFER TO DRAWING G100 FOR PROJECT GENERAL NOTES.
2. IN METAL STUD/GYPSUM BOARD PARTITIONS AND WALLS, PROVIDE 2X FIRE RETARDANT TREATED WOOD BLOCKING FOR WALL-MOUNTED ITEMS REQUIRING MECHANICAL ANCHORAGE.
3. REPAIR/PATCH ALL WALLS PRIOR TO PAINTING, INCLUDING ELECTRICAL AND DATA/IT DEVICES CURRENTLY SURFACE MOUNTED TO BE RECESSED INTO WALL CONSTRUCTION.

[illegible]

JOB NO.	18-292-1185
DRAWN	VAD / PJT
CHECKED	CDH / JMB
APPROVED	CDH
SHEET TITLE	
NEW WORK PLANS - ACADEMIC CENTER FOR EXCELLENCE AND SECOND FLOOR OFFICE	

A310

DOOR SCHEDULE

ROOM NO. NO.	ROOM NAME	DOOR NO.	DOOR														FRAME					DETAILS			HDWR SET	FIRE RATING (MIN.)	
			QTY.	W	H	THK.	TYPE	MAT.	H.M. DOORS			WOOD DOORS				FINISH	GLASS	TYPE	MAT.	GA.	FINISH	GLASS	HEAD	JAMB			SILL
									GA.	GRD.	MDL.	SPECIES	GRD.	CUT	MATCH												
C2019C	PRIVATE OFFICE	C2019C.1	1	3'-0"	7'-10"	1 3/4"	C	STL	18	ii	1	-	-	-	-	P4/PD	FGI	1	STL	16	P4/PD	-	10/A810	10/A810	-	1	-
D1005A	PRIVATE OFFICE	D1005A.1	1	3'-0"	7'-10"	1 3/4"	A	STL	18	ii	1	-	-	-	-	P4/PD	-	2	STL	16	P4/PD	FGI	10/A810	10/A810	-	1	-
D1005B	COLLABORATION ROOM	D1005B.1	1	3'-0"	7'-10"	1 3/4"	B	STL	18	ii	1	-	-	-	-	P4/PD	FGI	4	AL	-	A	FGI	7.8/A810	7.8.9/A810	-	1	-
		D1005B.2	-	-	-	-	-	-	-	-	-	-	-	-	-	-	-	3	STL	16	P4/PD	FGI	10/A810	10/A810	-	-	-
D1005C	OPEN OFFICE	-	-	-	-	-	-	-	-	-	-	-	-	-	-	-	-	-	-	-	-	-	-	-	-	-	-
D1005D	STORAGE ROOM	-	-	-	-	-	-	-	-	-	-	-	-	-	-	-	-	-	-	-	-	-	-	-	-	-	-
D1005E	CORRIDOR	D1005E.1	1	3'-0"	7'-10"	1 3/4"	B	STL	18	ii	1	-	-	-	-	P4/PD	FGI	2	STL	16	P4/PD	FGI	10/A810	10/A810	-	2	-

HARDWARE SCHEDULE

SET NO.	HINGES	LOCK SET	EXIT DEVICE	CLOSER	HOLDER	STOP	THRES-HOLD	KICK PLATE	MOP PLATE	WEATHER STRIPPING	SWEEP	CARD READER	ELEC. STRIKE	REMARKS
SET 1	BUTTS	CYLINDRICAL	--	--	--	WALL	--	--	--	--	--	YES	YES	1, 2
SET 2	BUTTS	MORTISE	--	YES	--	WALL	--	YES	--	--	--	YES	YES	1, 2

HARDWARE SCHEDULE REMARKS

1. CYLINDER LOCKSET FURNISHED BY OWNER AND INSTALLED BY CONTRACTOR.
2. PROVIDE VONDUPRIN 6211 DOOR STRIKES.

FINISH SCHEDULE

RM. NO.	ROOM NAME	FLOOR		BASE	NORTH WALL	SOUTH WALL	EAST WALL	WEST WALL	CEILING	ROOM HEIGHT	REMARKS					
		FIN.	CC.									FIN.	CC.	FIN.	CC.	FIN.
C2019C	PRIVATE OFFICE	F1	CAA	B1	VBA	P1	PA	P1	PA	C3	ACTA	V.I.F.				
D1005A	PRIVATE OFFICE	F1	CAA	B1/B2	VBA	P1	PA	P1	PA	P1	PA	C1	ACTA	VARIES	4, 5	
D1005B	COLLABORATION ROOM	F1	CAA	B1/B2	VBA	P1	PA	P1	PA	P1	PA	P1	C1	ACTA	VARIES	4, 5
D1005C	OPEN OFFICE	F1	CAA	B1	VBA	P1	PA	P1	PA	P1	PB	PA	C1	ACTA	10'-0"	4
D1005D	STORAGE ROOM	F1	CAA	B1	VBA	P1	PA	P1	PA	P1	PA	PA	C1	ACTA	8'-0"	4
D1005E	CORRIDOR	F1/F2	CAA	B1	VBA	P1	PA	P1	PA	P1	PA	PA	C1	ACTA	VARIES	1, 2, 3
D1004B	OPEN OFFICE	EX	EX	B1	VBA	P1	PA	PC	PA	EX	EX	EX	EX	EX	V.I.F.	6
D1004C	PRIVATE OFFICE	EX	EX	EX	EX	EX	EX	EX	EX	EX	EX	EX	EX	EX	V.I.F.	

DOOR SCHEDULE ABBREVIATIONS

MATERIAL
AL : ALUMINUM
STL : STEEL

GRADE (HOLLOW METAL)
I : STANDARD DUTY
II : HEAVY DUTY
III : EXTRA HEAVY DUTY

MODEL
1 : FULL FLUSH

FINISH:
P4: PAINT-ENAMEL "SEMI-GLOSS"
A: ANODIZED

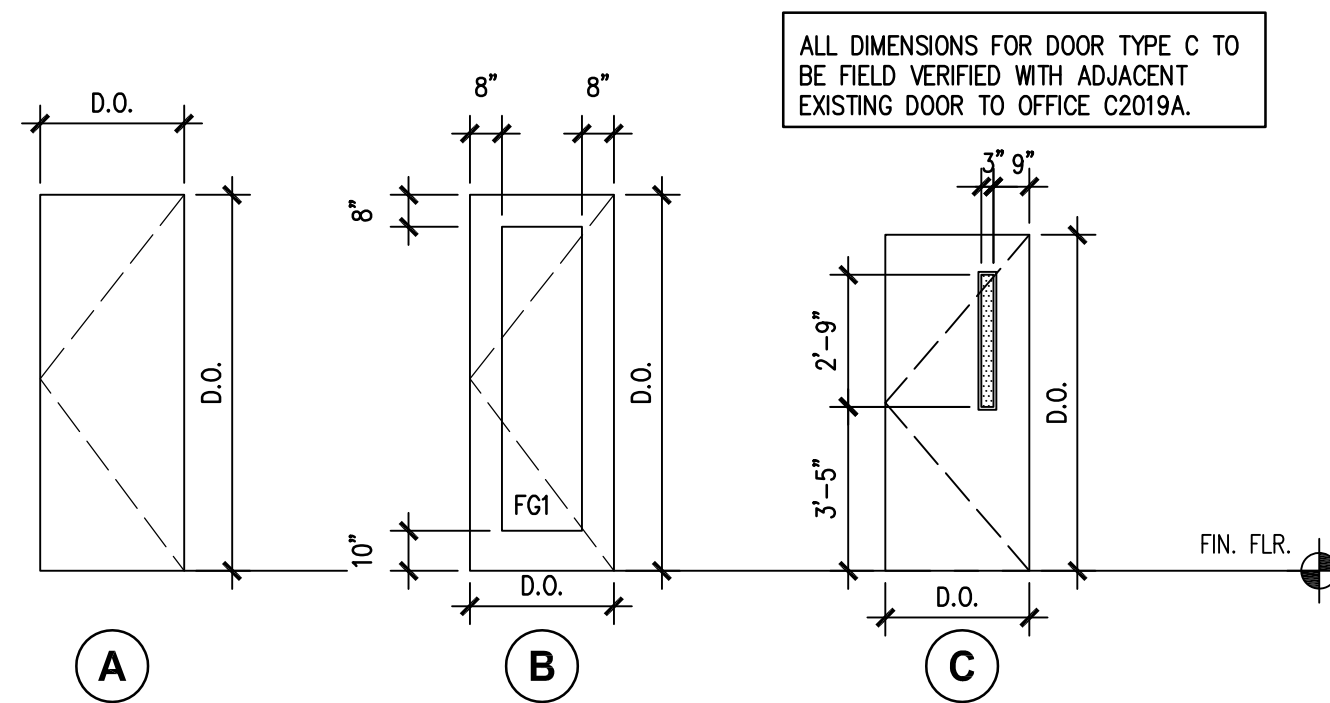
FINISH SCHEDULE REMARKS

1. USE F2 AT STAIR TREADS AND F1 AT BOTTOM OF STAIR.
2. PAINT SOUTH DOOR AND FRAME: PAINT ON BOTH EXTERIOR AND INTERIOR FACE.
3. 8'-0" CEILING MEASURE AT DOOR D1005E.1. CEILING TO REMAIN FLAT / LEVEL ACROSS ENTIRE LENGTH OF CORRIDOR.
4. PAINT CONCRETE COLUMNS COLOR PA.
5. PROVIDE B2 BASE AT VERTICAL FACE OF PERIMETER CONCRETE FOUNDATION WALL.
6. PAINT NEW PARTITION WALLS COLOR PA.

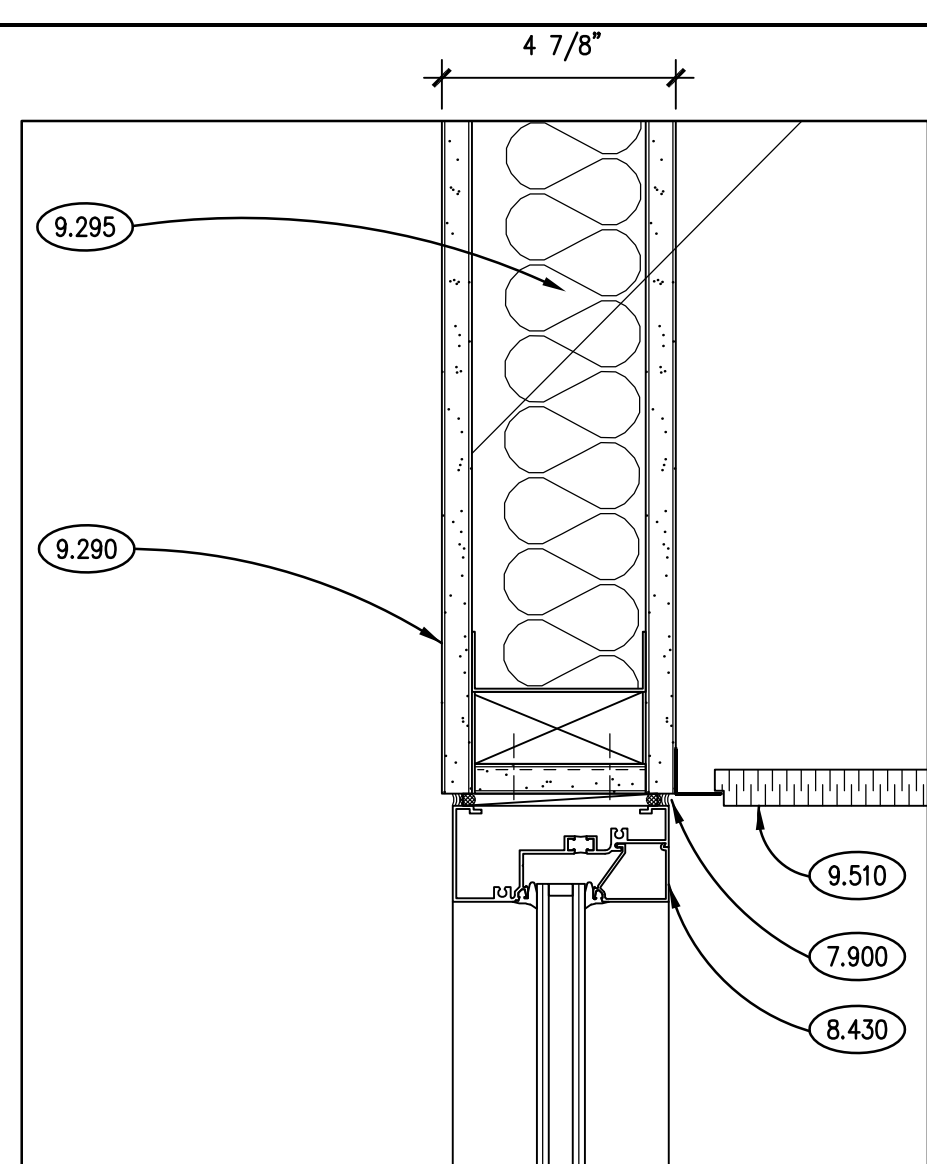
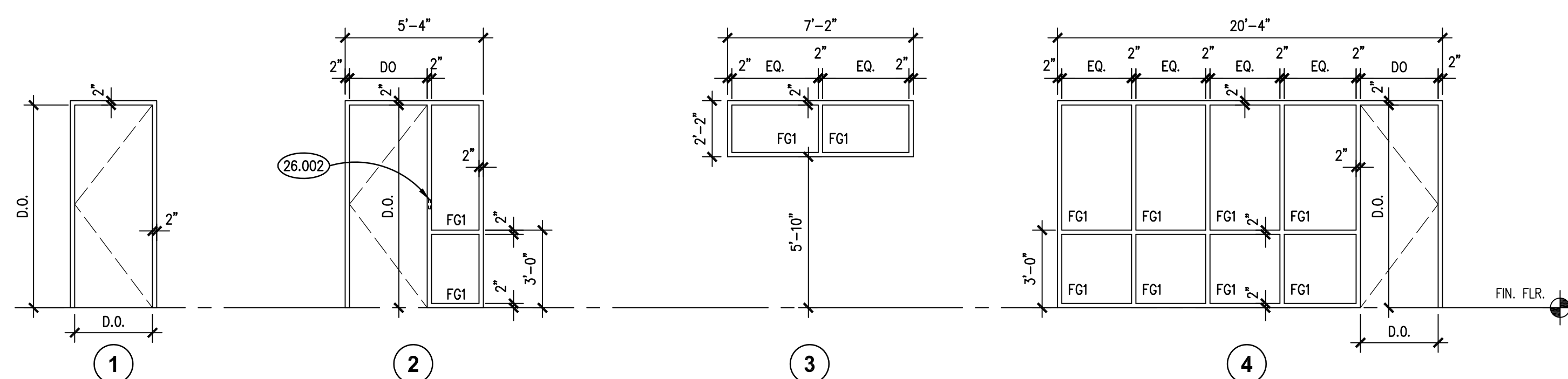
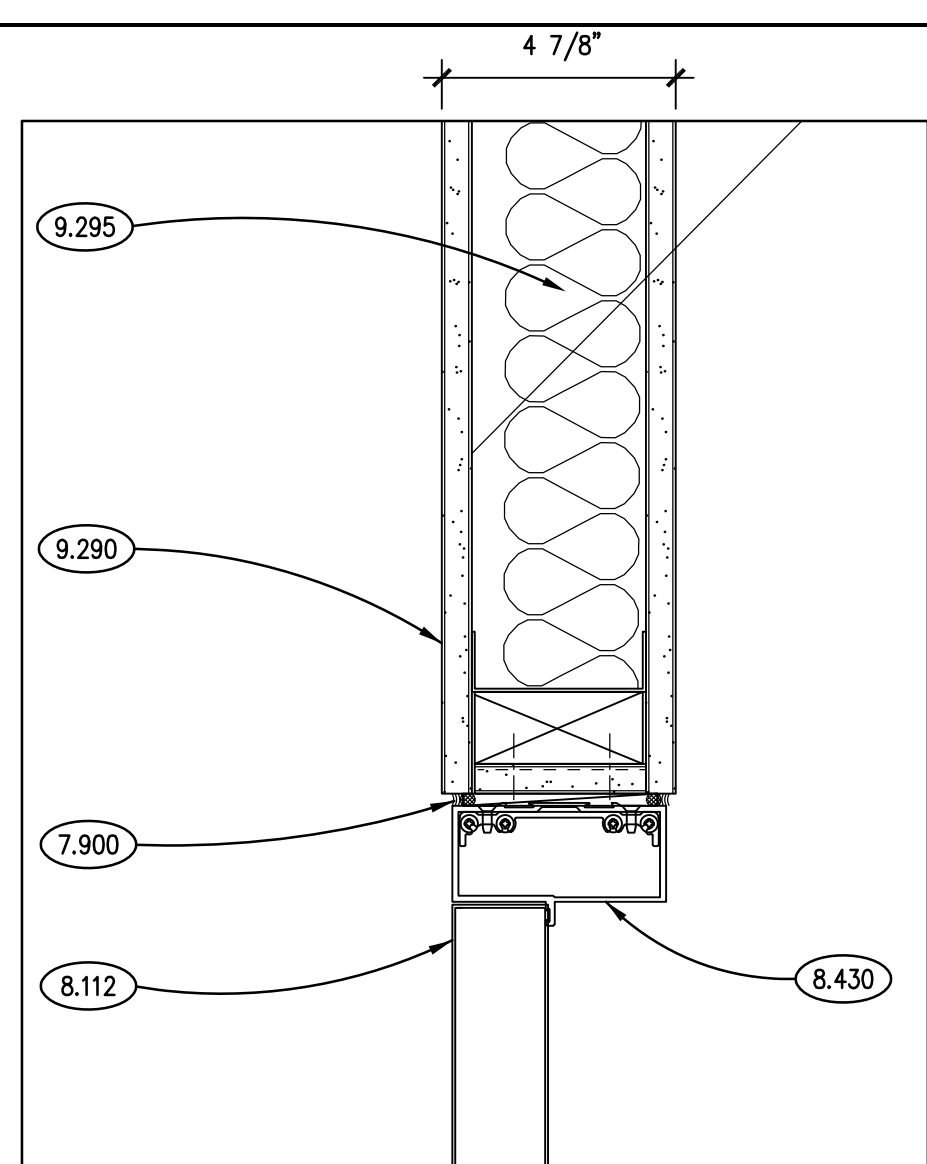
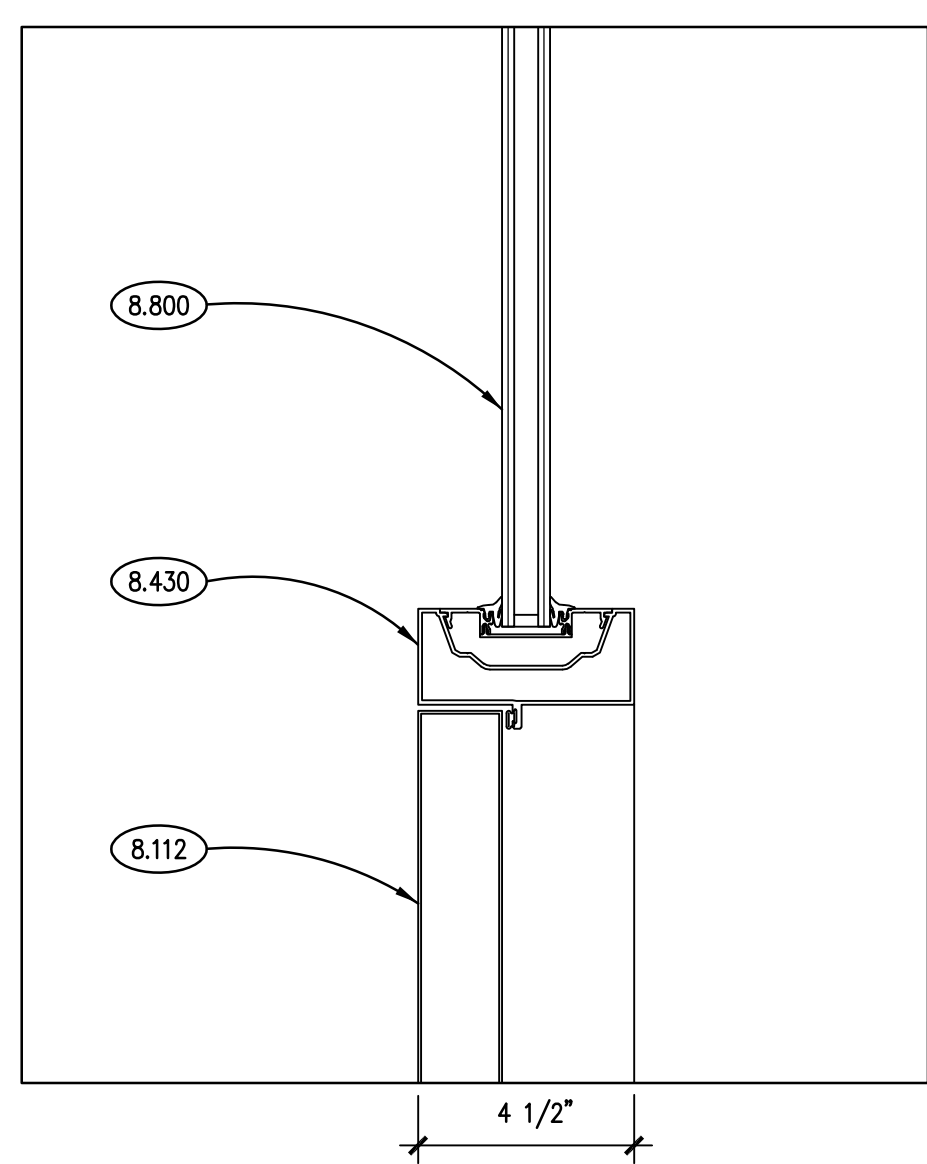
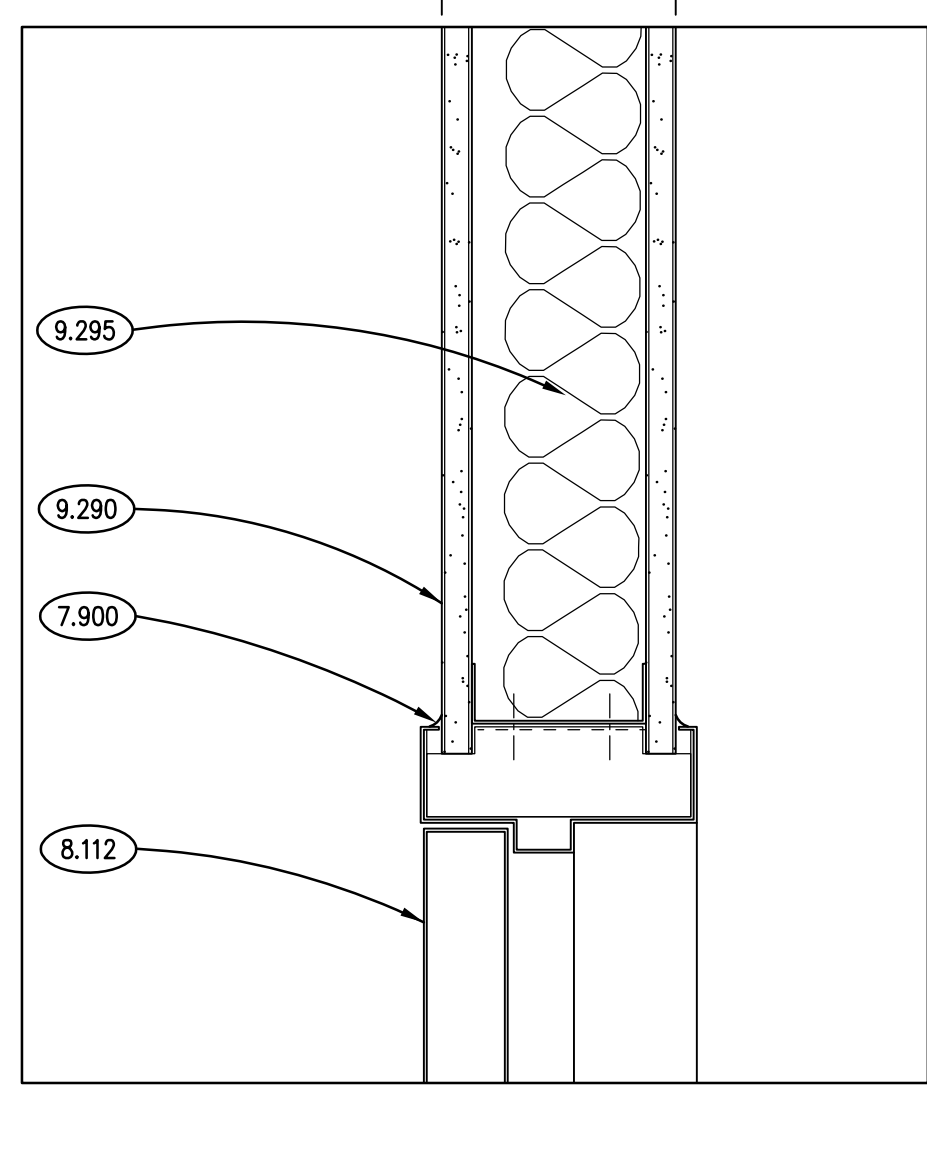
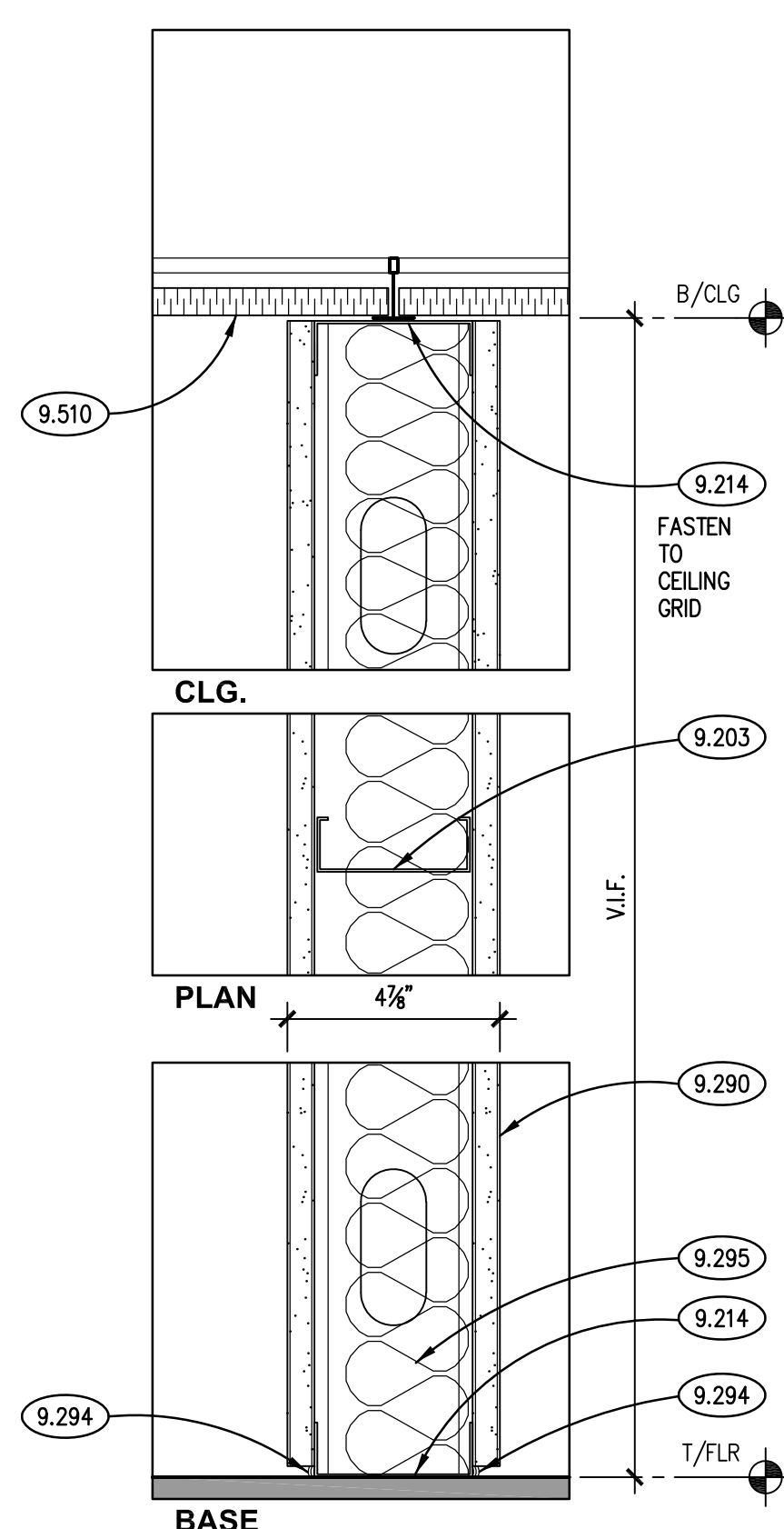
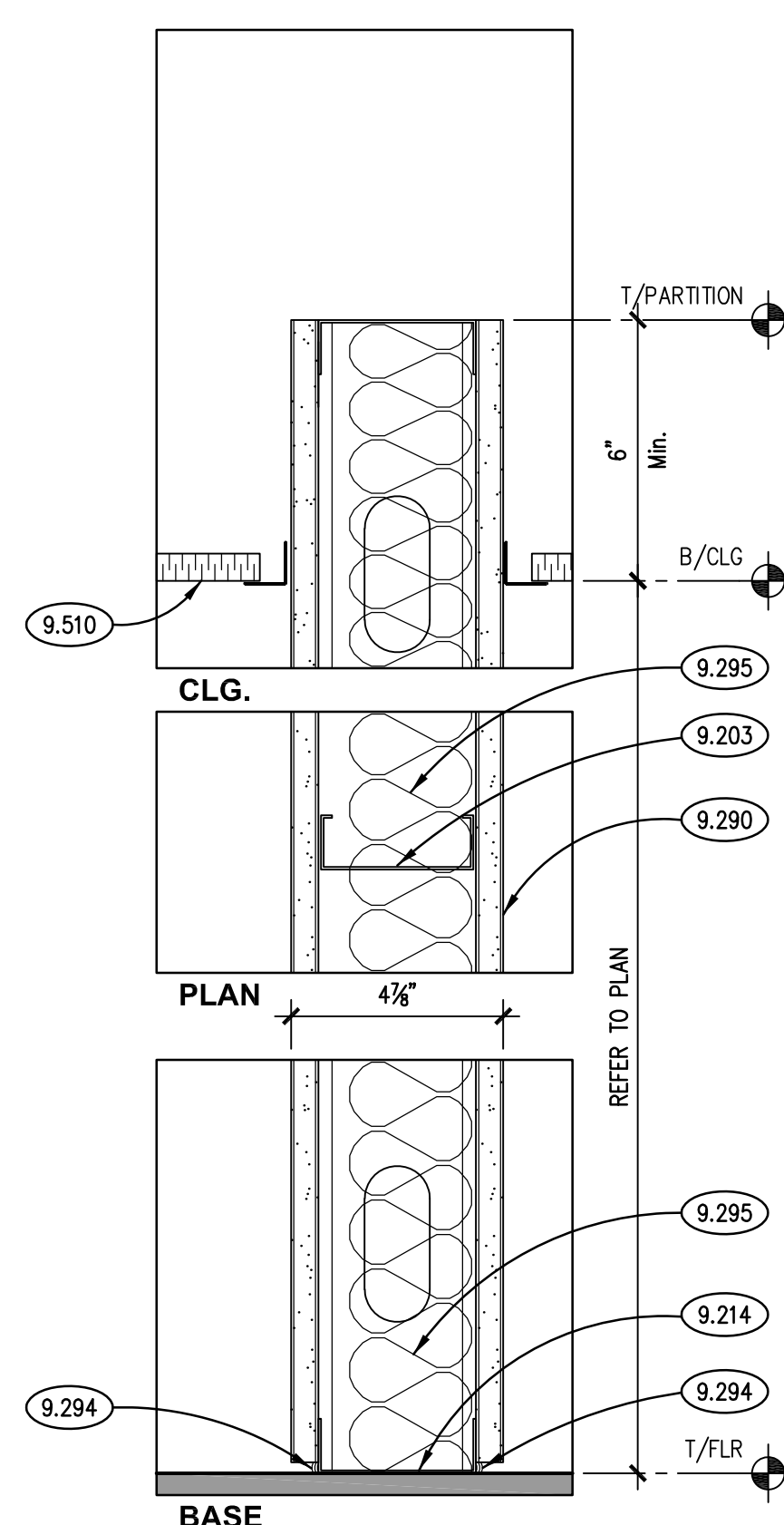
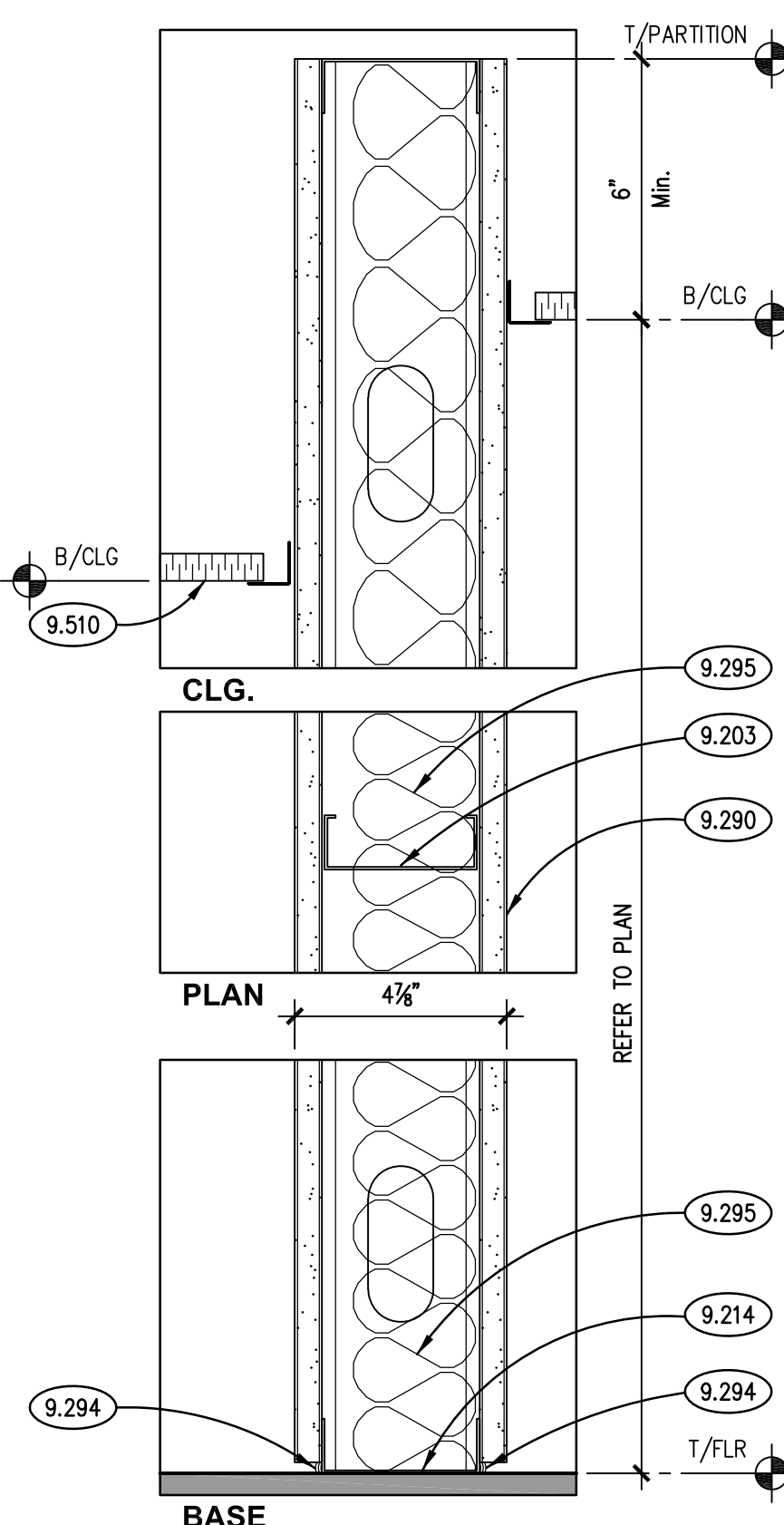
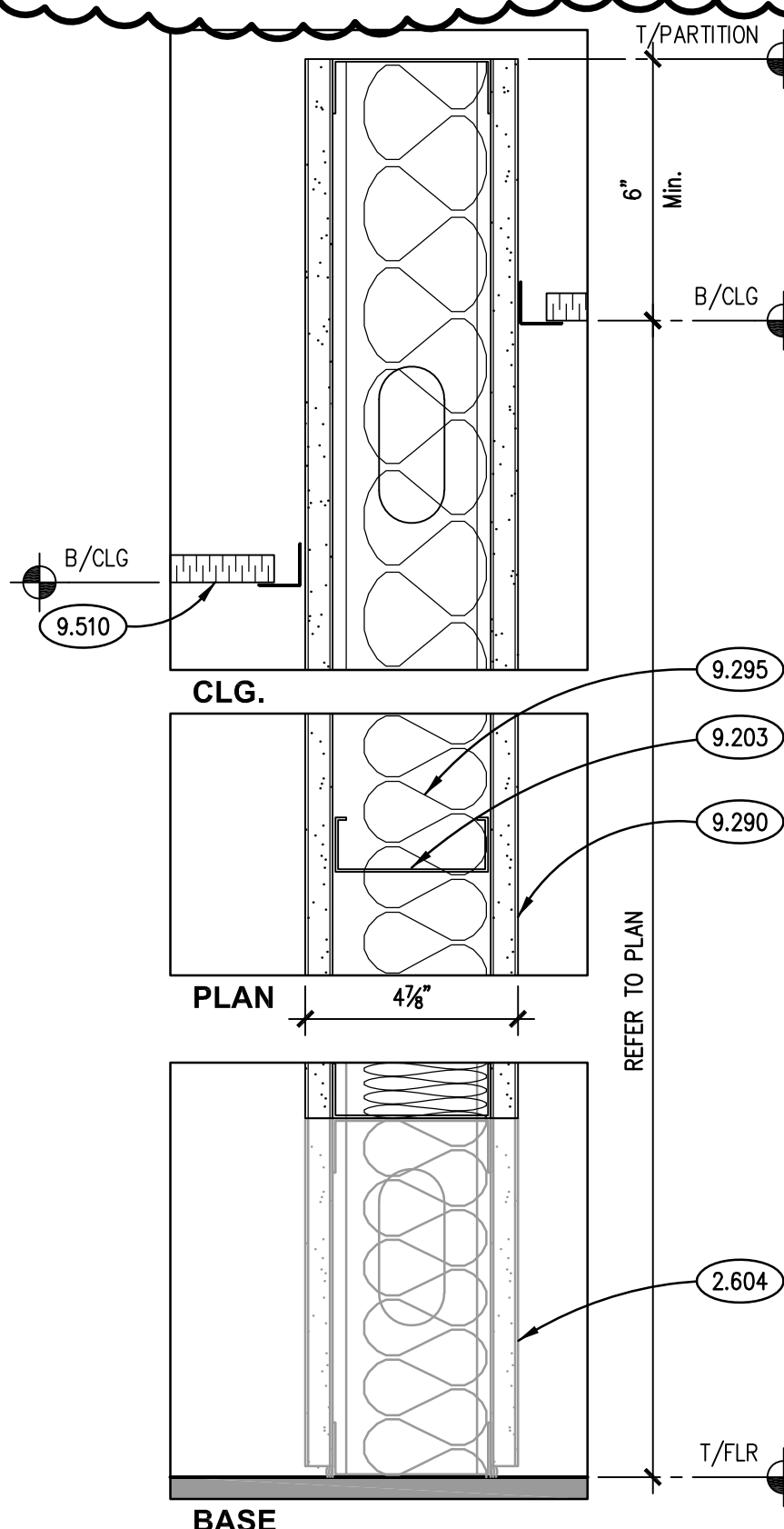
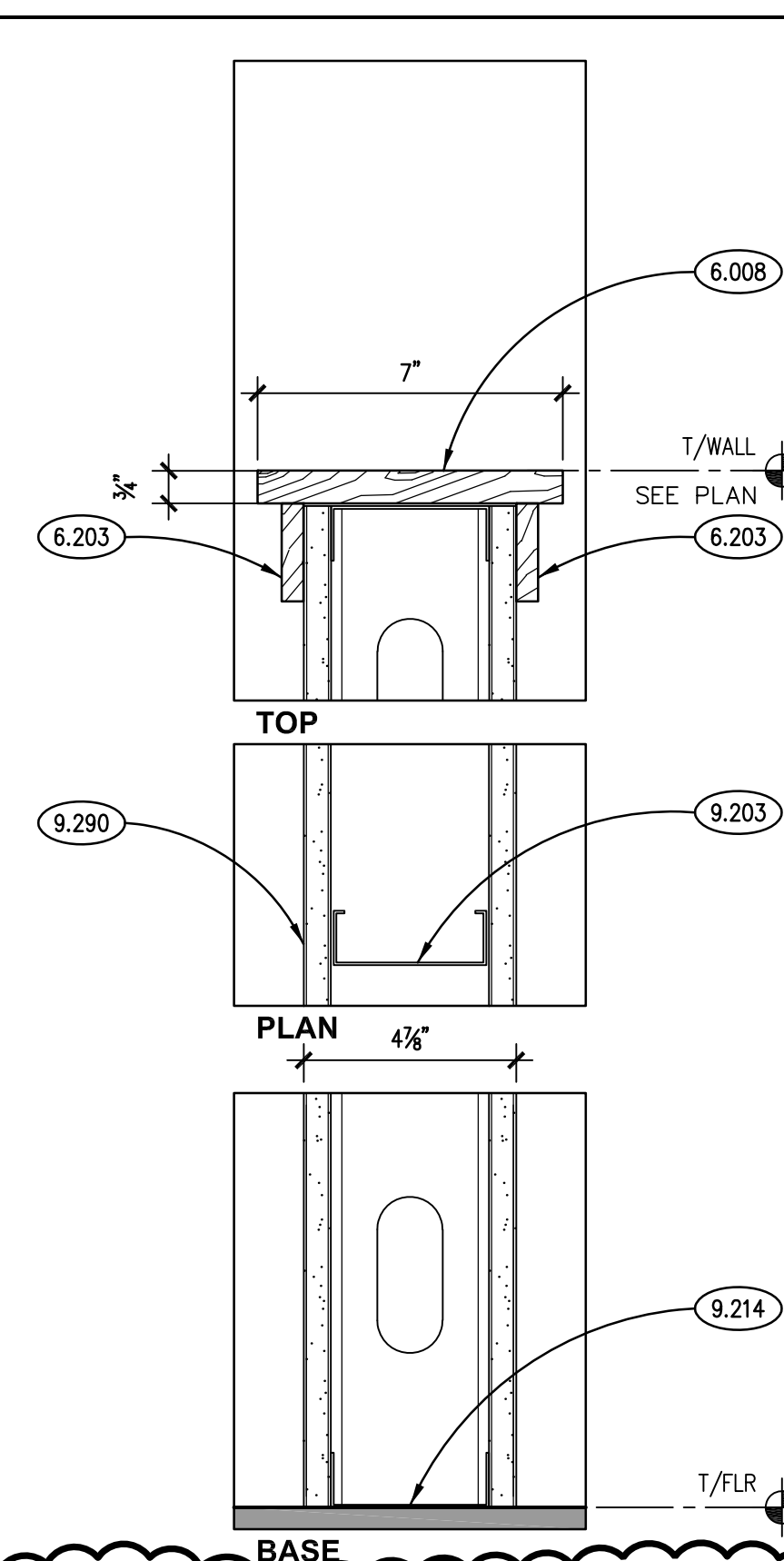
KEYNOTES

- 2.604 EXISTING HALF WALL TO REMAIN.
- 6.008 HARDWOOD LUMBER: SIZE AND SHAPE AS INDICATED; SPECIES: OAK, STAIN AND FINISH PER OWNER SELECTION.
- 6.203 FINISH CARPENTRY: 1/2" X 2-1/4" WOOD TRIM; SPECIES: OAK, STAIN AND FINISH PER OWNER SELECTION.
- 7.900 JOINT SEALANT: REFER TO SCHEDULE; PROVIDE BACKER ROD OR BOND BREAKER.
- 8.112 STEEL DOOR: REFER TO DOOR, FRAME AND BORROWED LIGHT SCHEDULE.
- 8.430 ALUMINUM STOREFRONT FRAMING.
- 8.800 GLAZING: REFER TO DOOR SCHEDULE OR ROOM FINISH SCHEDULE.
- 8.800 GLAZING: REFER TO DOOR/FRAME/WINDOW SCHEDULES FOR TYPE.
- 9.203 METAL STUD FRAMING: 3-5/8" STUD; 16" O.C. SPACING; 20 GAUGE UNLESS NOTED OTHERWISE; ANCHORAGE TO SUIT APPLICATION.
- 9.214 METAL STUD FRAMING: STUD RUNNER: SIZE TO MATCH METAL STUDS.
- 9.290 GYPSUM BOARD: 5/8" THICK; TYPE "X".
- 9.294 GYPSUM BOARD ACCESSORY: ACOUSTICAL SEALANT.
- 9.295 GYPSUM BOARD ACCESSORY: ACOUSTICAL INSULATION: SOUND ATTENUATION BATTS; THICKNESS AS SPECIFIED.
- 9.510 ACOUSTICAL CEILING PANELS AND GRID.
- 26.002 CARD ACCESS: REFER TO ELECTRICAL DRAWINGS; COORDINATE FRAME PREPARATION REQUIREMENTS AND DEVICE INSTALLATION WITH ELECTRICAL CONTRACTOR.

DOOR TYPES



FRAME TYPES

HEAD/JAMB DET. 7
SCALE: 3" = 1'-0"DOOR HEAD/JAMB DET. 8
SCALE: 3" = 1'-0"DOOR JAMB DET. 9
SCALE: 3" = 1'-0"TYP. DOOR HEAD/JAMB DETAIL 10
SCALE: 3" = 1'-0"NON-RATED PARTITION G3
SCALE: 3" = 1'-0"NON-RATED PARTITION G3
SCALE: 3" = 1'-0"NON-RATED PARTITION G3
SCALE: 3" = 1'-0"NON-RATED PARTITION G3
SCALE: 3" = 1'-0"PART HT. PARTITION G3
SCALE: 3" = 1'-0"

FINISH TYPES

AREA	FIN.	DESCRIPTION	AREA	FIN.	DESCRIPTION
FLOOR	F1	CARPET TILE - CARPET MATERIAL FURNISHED BY OWNER. CONTRACTOR TO INSTALL AND PROVIDE ADHESIVE, SKIM COAT ETC. REFER TO SPECIFICATIONS.	CEILING	C1	ACP: 24"x24" (MTL. SUSP. SYS.)
	F2	JOHNSONITE RUBBER TREADS WITH INTEGRAL RISERS. COLOR: #44 DARK BROWN. PROVIDE BLACK GRIT STRIPS.		C2	NOT USED
	F2	JOHNSONITE RUBBER TREADS WITH INTEGRAL RISERS. COLOR: #44 DARK BROWN. PROVIDE BLACK GRIT STRIPS.		C3	EXISTING TO REMAIN. INSTALL OWNER-FURNISHED TILES AS REQUIRED.
BASE	B1	RESILIENT BASE: 4" COVE JOHNSONITE	PAINT	P1	LATEX - "EGGSHELL"
	B2	CARPET TILE: 6"x6" HIGH		P2	LATEX - "FLAT"
	B2	CARPET TILE: 6"x6" HIGH		P3	LATEX - "SEMI-GLOSS"
				P5	WB LIGHT INDUSTRIAL COATING - "SEMI-GLOSS"
			GLASS	FG1	1/4" TEMPERED; CLEAR

COLOR CODE SCHEDULE

AREA	FIN.	MANUFACTURER	COLOR/CAT. #
CEILING-ACOUSTICAL	ACTA	USG OR APPROVED EQUAL	2' X 2' PANEL; CLIMA PLUS; ASTRO; SLT EDGE; 15/16" WIDE FACE GRID; WHITE. OWNER TO FURNISH TILES FOR CONTRACTOR INSTALL.
FLOOR-CARPET	CAA	CARPET TILE: FURNISHED BY OWNER	STYLE: BY OWNER.
PAINT	PA	SHERWIN WILLIAMS	COLOR: #SW7004 "SNOWBOUND"
	PB	BENJAMIN MOORE	COLOR: #BM2121-20 "STEEL WOOL"
	PC	BENJAMIN MOORE	COLOR: TBD BY OWNER
	PD	SHERWIN WILLIAMS	COLOR: #SW6354 "ARCHITECTURAL BROWN"
BASE	VBA	JOHNSONITE	COLOR: 40 "BLACK"
	SSA	DUPONT CORIAN	COLOR: AS SELECTED FROM FULL COLOR RANGE
SOLID SURFACE			

GENERAL NOTES

1. REFER TO DRAWING G100 FOR PROJECT GENERAL NOTES.
2. REFER TO REFLECTED CEILING PLAN DRAWINGS FOR CEILING HEIGHTS AND FOR LOCATIONS OF SOFFITS AND HEADERS.
3. REFER TO FLOOR PLAN DRAWINGS AND WALL TYPE DRAWINGS FOR WALL SUBSTRATE SURFACE MATERIALS.
4. REPAIR HOLES AND BLEMMISHES ON SURFACES PRIOR TO PAINTING.
5. PAINT SHEENS INDICATED IN FINISH TYPES ARE MPI DESIGNATIONS.
6. PAINT EXPOSED GYPSUM BOARD SURFACES UNLESS NOTED OTHERWISE; USE FINISH TYPE P1 FOR GYPSUM BOARD WALLS; USE FINISH TYPE P1 FOR GYPSUM BOARD SOFFITS AND CEILINGS.
7. PAINT EXPOSED UNFINISHED (EXCEPT STAINLESS STEEL) OR PRIMED INTERIOR METAL SURFACES UNLESS NOTED OTHERWISE; USE FINISH TYPE P3. EXAMPLES INCLUDE, BUT ARE NOT LIMITED TO: HANDRAILS, GUARDRAILS, STAIR COMPONENTS. REFER PLAN AND ELEVATION DRAWINGS FOR LOCATIONS.
8. PAINT EXPOSED UNFINISHED (EXCEPT STAINLESS STEEL), PRIMED OR GALVANIZED EXTERIOR METAL SURFACES UNLESS NOTED OTHERWISE; USE FINISH TYPE P5. EXAMPLES INCLUDE, BUT ARE NOT LIMITED TO: EXTERIOR DOOR. REFER PLAN AND ELEVATION DRAWINGS FOR LOCATIONS.



NOTES

1. MODEL BASED ON TITUS
2. INLET S.P. = 0.75



1. DEMOLISH ALL EXISTING DATA CABLING FROM DATA RECEPTACLES TO BE REMOVED BACK TO ROOM C2021. ALL NEW DATA CABLES TO BE PULLED BACK TO ROOM D2027 FOR OWNER TERMINATION. ALL DATA CABLES TO BE PANDUIT, CAT 6 U/UTP CABLE, P/N: PUP604WH-UY.
2. ALL DOOR ACCESS CABLES TO BE PULLED BACK TO ROOM D2027 FOR OWNER TERMINATION. AT EACH DOOR LOCATION, CONTRACTOR TO COIL EXCESS CABLE ABOVE CEILING FOR OWNER TERMINATION. CABLE TO BE WINDY CITY WIRE, SECURITY/ACCESS CONTROL SMARTWIRE, P/N: 446100.

23.100 DISCONNECT AND PROTECT ELECTRIC RADIANT CEILING PANEL AND ASSOCIATED THERMOSTAT FOR RELOCATION. SEE NEW WORK PLANS FOR NEW LOCATION.

23.101 REMOVE DIFFUSER/GRILLES. REMOVE BRANCH DUCTWORK BACK TO LOCATIONS SHOWN. PROVIDE TEMPORARY CAP ON DUCTWORK FOR NEW CONNECTION. PROVIDE PERMANENT CAP ON TAKEOFFS NOT BEING REUSED.

23.102 THERMOSTAT BEING REMOVED OR RELOCATED UNDER A SEPARATE AIR HANDLING UNIT REPLACEMENT PROJECT. FIELD VERIFY LOCATION OF THERMOSTAT FOR AIR HANDLING UNIT. REMOVE THERMOSTAT AND TURN OVER TO THE OWNER.

23.201 DISCONNECT PROTECT AND RELOCATE SUPPLY DIFFUSER IN AREA WHERE CEILING IS BEING DEMOLISHED. RELOCATE SUPPLY DIFFUSER ONE CEILING TILE WEST AS SHOWN. PROVIDE ALL MATERIALS AND LABOR TO EXTEND DUCTWORK AS REQUIRED FOR RELOCATION.

23.202 REMOVE ELECTRIC RADIANT CEILING PANELS AND ASSOCIATED THERMOSTAT. CONFIRM FINAL LOCATION WITH OWNER PRIOR TO ROUGH-IN AND INSTALLATION.

23.203 PROVIDE NEW CEILING DIFFUSERS AS SHOWN. PROVIDE ALL MATERIALS AND LABOR TO EXTEND BRANCH DUCTWORK TO NEW LOCATION.

23.204 PROVIDE NEW RETURN GRILLE AND SOUND BOOT FOR ROOM C2019.

23.205 THERMOSTAT BEING REMOVED OR RELOCATED UNDER A SEPARATE PROJECT. COORDINATE WITH AIR HANDLING UNIT REPLACEMENT PROJECT CONTRACTOR.

23.206 PROVIDE NEW THERMOSTAT FOR VAV BOX.

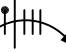


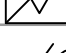




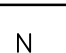

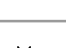
23.207 PROVIDE NEW VAV BOX. BOX SHALL BE A SINGLE DUCT VARIABLE AIR VOLUME TERMINAL UNIT AS SCHEDULED. MINIMUM 22-GA GALVANIZED STEEL CASING WITH A 1/2" LAYER INSULATION. ROUND INLET COLLAR WITH RECTANGULAR DISCHARGE. 24 VOLT BI-DIRECTIONAL DAMPER ACTUATOR WITH POWERED COILS, SPRING RETURN OPEN. PRESSURE INDEPENDENT AIR VOLUME CONTROLLER. PROVIDE WITH DIFFERENTIAL PRESSURE AIRFLOW SENSOR MEASURING TOTAL, STATIC, AND WAKE PRESSURES. PROVIDE WITH FACTORY-INSTALLED, UNLIMITED DIRECTIONAL FLOW CONTROL AND IE N TO EXISTING BUILDING AUTOMATION SYSTEM.

23.208 PROVIDE MATERIALS AND LABOR TO CHANGE AHU-19B RETURN FROM SINGLE ZONE VAV TO DUCT CONTROL PRESSURE CONTROL.

23.209 INCORPORATE FAN TUBE CONTROL VALVE INTO VAV BOX SEQUENCE FOR HEATING.

26.100 PANELS LP2 AND RP2 ARE LOCATED IN STORAGE ROOM D1002. REUSE EXISTING SPARE 20 AMPERE, SINGLE POLE BREAKERS FOR ALL NEW BRANCH CIRCUITS.

- 26.201 RADIANT CEILING PANEL TO BE RELOCATED, DISCONNECT BRANCH CIRCUITRY AND DEMOLISH ANY ABANDONED IN PLACE WIRING AND CONDUIT.
- 26.202 DISCONNECT EXISTING LIGHT SWITCH IN WALL TO BE REMOVED, RELOCATE EXISTING SWITCH IN NEW WORK AREA.
- 26.301 RADIANT CEILING PANEL TO BE RELOCATED (NEW LOCATION), HOLEMUR 2 1/2" x 12G 1/2" TO PANEL LP2-2, CONFIRM FINAL LOCATION WITH OWNER PRIOR TO ROUGH-IN AND INSTALLATION.
- 26.301 LOCATE AND INTERCEPT EXISTING RECEPTACLE BRANCH CIRCUITRY AND EXTEND TO NEW RECEPTACLE TO BE ADDED.
- 26.302 PROVIDE CONNECTION TO PRE-WIRED SYSTEMS FURNITURE. COORDINATE ACCESS POWER REQUIREMENTS WITH OFFICE FURNITURE VENDOR PRIOR TO ROUGH-IN
- 26.303 PROVIDE ROUGH-IN AND JUNCTION BOX WITH COVER PLATE WITH 2" CONDUIT STUBBUST TO ACCESSIBLE CEILING FOR A/V RECEPTACLE TO PROJECTOR.
- 26.401 PROVIDE NEW LED LUMINAIRE AS SPECIFIED, EXTEND EXISTING BRANCH CIRCUITRY TO NEW LUMINAIRES FROM LIGHTING PANEL LP2-2.
- 26.402 PROVIDE EXISTING LUMINAIRE TO ACCOMMODATE NEW CONSTRUCTION, EXTEND EXISTING BRANCH CIRCUITRY AS REQUIRED TO NEW LUMINAIRE LOCATION TO ENSURE A COMPLETE AND OPERATIONAL SYSTEM.
- 27.100 WIRELESS ACCESS POINT LOCATION, PROVIDE CATEGORY 6 CABLE, AS SPECIFIED, FROM DATA IT ROOM D2027 TO WIRELESS ACCESS POINT LOCATION, EQUIPMENT AND FINAL CONNECTIONS BY OWNER.
- 27.101 SECURITY CAMERA DEVICE LOCATION, PROVIDE CATEGORY 6 CABLE, AS SPECIFIED, FROM DATA IT ROOM D2027 TO DEVICE LOCATION, EQUIPMENT AND FINAL CONNECTIONS BY OWNER.
- 27.102 DATA RECEPTACLE, CONFIRM EXISTING ROUGH-IN LOCATION WITH OWNER PRIOR TO INSTALLATION, CUT AND PATCH WALL TO ROUGH-IN NEW DATA RECEPTACLE
- 27.200 DEMOLISH EXISTING DATA RECEPTACLE INCLUDING CATEGORY 6 CABLEING TO SOURCE, ABANDON IN PLACE TO BE RELOCATED, CLEAN AND REINSTALL AT NEW LOCATION SHOWN, EXTEND WIRING OVER DATA RECEPTACLE LOCATION FOR POTENTIAL FUTURE USE BY OWNER, ALL CABLES TO BE REMOVED BACK TO ROOM C2021.
- 28.103 FIRE ALARM DEVICE TO BE EFFECTED BY WALL DEMOLITION, DISCONNECT AND PROTECT DEVICES AND WIRING TO BE RELOCATED, CLEAN AND REINSTALL AT NEW LOCATION SHOWN, EXTEND WIRING AS NECESSARY TO ENSURE A COMPLETE AND OPERATIONAL SYSTEM.

SYMBOL	DESCRIPTION
	2X2 LIGHT FIXTURE.
	BRANCH CIRCUIT WIRING IN CONDUIT HOMERUN TO PANEL. ONE OR MORE PER HOMERUN. SLASHES INDICATE NUMBER OF CONDUCTORS.
	FLEXIBLE CONDUIT CONNECTION.
	COMMUNICATIONS OUTLET @18" AFF. STUB 3/4" E.C. TO ACCESSIBLE CEILING.
	COMMUNICATIONS OUTLET. CEILING.
	DUPLEX RECEPTACLE. 20A 125V 2P 3W GRD. NEMA5-20R. @18" AFF. D=DEDICATED CIRCUIT. '1' = @48" AFF. OR @6" ABOVE COUNTER.
	DUPLEX RECEPTACLE. 20A 125V 2P 3W GRD. NEMA5-20R. CEILING.
	FIRE ALARM HORN/STORBE COMBINATION. @80" AFF.
	NUMBER INDICATES CANDLE LEVEL (110C) UNLESS NOTED OTHERWISE.
	SINGLE POLE TOGGLE SWITCH. 15A OR 20A AS REQUIRED. 120/277V '3' = 3 WAY SWITCH. 'D' = DIMMER SWITCH.
	JUNCTION BOX.
DEMOLITION NOTATION	
N	NEW DEVICE OR EQUIPMENT.
D	EXISTING ELECTRICAL OUTLET OR EQUIPMENT TO BE DEMOLISHED. REMOVE. ABANDONED IN PLACE. WIRING IN ITS ENTIRETY. EXTEND BRANCH CIRCUITRY AFFECTED BY THIS DEMOLITION TO ELECTRICAL OUTLET OR EQUIPMENT TO REMAIN.
X	EXISTING ELECTRICAL OUTLET OR EQUIPMENT TO REMAIN. (CIRCUIT # = REROUTE EXISTING CIRCUIT TO NEW CIRCUIT NUMBER)
R	EXISTING ELECTRICAL OUTLET OR EQUIPMENT RELOCATED. (NEW LOCATION)
XR	EXISTING ELECTRICAL OUTLET OR EQUIPMENT TO BE REMOVED & RELOCATED(OLD LOCATION).