

GENERAL NOTES

ALL CONSTRUCTION SHALL BE IN ACCORDANCE WITH THE REQUIREMENTS SET FORTH BY 2003 IBC AND SHALL CONFORM TO ALL OTHER APPLICABLE MUNICIPAL, STATE, AND FEDERAL REGULATIONS INCLUDING THE ILLINOIS ACCESSIBILITY CODE (1997) AND THE AMERICANS WITH DISABILITIES ACT.

A. GENERAL NOTES

- ALL CONTRACTORS ARE REQUIRED TO VISIT THE SITE AND BE KNOWLEDGEABLE REGARDING EXISTING CONDITIONS AND THEIR EFFECT ON THE PROPOSED WORK. CONTRACTORS SHALL VERIFY AND BE RESPONSIBLE FOR ANY CONDITIONS REQUIRING MODIFICATION BEFORE PROCEEDING WITH THE PROJECT.
- NOTIFY THE OWNER'S REPRESENTATIVE A MINIMUM OF 72 HOURS PRIOR TO THE INTERRUPTION OF ANY UTILITY.
- CONTRACTORS AND SUBCONTRACTORS SHALL COORDINATE THEIR WORK WITH THAT OF OTHER TRADES.
- NO WORK WILL BE PERMITTED TO BE INSTALLED WITHOUT RECEIPT AND SUBSEQUENT REVIEW OF FULL AND COMPLETE SUBMITTALS BY THE ARCHITECT/ENGINEER.
- DO NOT SCALE DRAWINGS, DIMENSIONS INDICATED TAKE PRECEDENCE OVER SCALE.
- VERIFY ALL DIMENSIONS AND ELEVATIONS IN THE FIELD, WHERE DISCREPANCIES ARE FOUND BETWEEN DIMENSIONS OR ELEVATIONS SHOWN AND ACTUAL FIELD CONDITIONS, NOTIFY ARCHITECT/ENGINEER.
- DEFINITIONS:
 - FURNISH:** SUPPLY, DELIVER TO AND UNLOAD AT PROJECT SITE READY FOR ASSEMBLY AND INCORPORATION INTO THE WORK.
 - INSTALL:** AT THE PROJECT SITE, UNPACK/UNCRATE ASSEMBLE, PLACE, ANCHOR, FINISH, PROTECT, CLEAN, AND PERFORM ALL OTHER SIMILAR OPERATIONS REQUIRED TO FULLY AND PROPERLY INCORPORATE AN ITEM INTO THE WORK, LEGALLY DISPOSE OF OR RECYCLE PACKAGING AND EXTRA MATERIAL OFF-SITE.
 - PROJECT SITE:** THE SPACE AVAILABLE TO THE CONTRACTOR FOR PERFORMANCE OF CONSTRUCTION ACTIVITIES. THE EXTENT OF THE PROJECT SITE IS THE AREAS TO BE REMODELED AS INDICATED ON THE DRAWINGS, AND EXTENDS TO SUCH AREAS AS CONTAIN TERMINATIONS FOR POWER, DATA AND OTHER SERVICES.
 - OFF-SITE:** OUTSIDE THE PROPERTY IN WHICH THE PROJECT SITE IS LOCATED.
 - PROVIDE:** FURNISH AND INSTALL, AS DEFINED ABOVE.
- WHERE CONFLICTS MAY EXIST BETWEEN THE REQUIREMENTS OF PORTIONS OF THE CONTRACT DOCUMENTS, THE GREATER QUANTITY, HIGHER QUALITY OR MORE STRINGENT REQUIREMENT SHALL GOVERN. THEREFORE, BY EXECUTING A CONTRACT FOR CONSTRUCTION, THE CONTRACTOR AGREES THAT, IF IT RAISED NO QUESTIONS REGARDING SUCH CONFLICTS DURING THE BIDDING PROCESS, AND IN THE ABSENCE OF A CLARIFYING ADDENDUM ISSUED DURING THE BIDDING PROCESS, IT HAS VOLUNTEERED TO COMPLY WITH THE MORE EXPENSIVE REQUIREMENT AS PART OF ITS BASE BID AND IS NOT ENTITLED TO ANY ADDITIONAL COMPENSATION TO RESOLVE THE CONFLICT.
- THE CONTRACT DOCUMENTS REQUIRE THE CONTRACTOR TO FURNISH AND INSTALL COMPLETE PRODUCTS, SYSTEMS AND SERVICES. BY EXECUTING A CONTRACT FOR CONSTRUCTION, THE CONTRACTOR AGREES THAT THE DRAWINGS SET FORTH THE DESIGN INTENT AND, THEREFORE, MAY NOT EXPRESSLY DEPICT EVERY LENGTH, SEGMENT, PIECE, PART, COMPONENT OR UNIT OF A PRODUCT, SYSTEM OR SERVICE. THE CONTRACTOR FURTHER AGREES THAT, AS PART OF ITS BID, IT MUST FURNISH AND INSTALL EVERY LENGTH, SEGMENT, PIECE, PART, COMPONENT OR UNIT OF A PRODUCT, SYSTEM OR SERVICE AND, CONSEQUENTLY, THE CONTRACTOR IS NOT ENTITLED TO ANY ADDITIONAL COMPENSATION FOR ANY LENGTH, SEGMENT, PIECE, PART COMPONENT OR UNIT OF A PRODUCT, SYSTEM OR SERVICE BECAUSE IT IS NOT EXPRESSLY DEPICTED HEREIN.
- ARCHITECT SHALL BE NAMED AS ADDITIONAL INSURED ON ALL REQUIRED INSURANCE POLICIES.

B. MISCELLANEOUS AND DEMOLITION NOTES

- DEFINITIONS:
 - DEMOLISH:** DISCONNECT FROM SERVICES, UNFASTEN, REMOVE, DISASSEMBLE AND LEGALLY DISPOSE OF OR RECYCLE OFF-SITE.
 - SALVAGE:** CAREFULLY, SO AS TO PRESERVE INTEGRITY AND USEFULNESS, DISCONNECT FROM SERVICES, UNFASTEN, REMOVE, DISASSEMBLE IF NECESSARY, AND STORE TEMPORARILY FOR REINCORPORATION INTO THE WORK OR FOR DELIVERY/TURN-OVER TO THE OWNER AS INDICATED IN THE CONSTRUCTION DOCUMENTS.
 - SALVAGE IN PLACE:** PROTECT, RE-USE, CLEAN, RE-CONDITION IF NECESSARY, REFINISH IF INDICATED IN THE DRAWINGS, EXISTING INSTALLED ITEM/COMPONENT WITHOUT DISCONNECTING, UNFASTENING OR REMOVING FROM THE WORK.
- COORDINATE PENETRATIONS AND/OR SLEEVES REQUIRED IN WALLS, FLOORS, CEILING OR ROOFS FOR MECHANICAL AND ELECTRICAL WORK REQUIRED BY ARCHITECTURAL, MECHANICAL, ELECTRICAL, AND PLUMBING DRAWINGS.
- SEAL WITH UL APPROVED MATERIALS PENETRATIONS OF DUCTWORK, CONDUIT AND PIPES THROUGH FIRE-RATED ASSEMBLIES, TO MAINTAIN THE RATING INTEGRITY OF THOSE ASSEMBLIES. PROVIDE FIRE DAMPERS AS INDICATED ON THE DRAWINGS.
- SEAL WITH ACOUSTICAL SEALANT PENETRATIONS OF DUCTWORK, CONDUIT AND PIPES THROUGH NON-RATED FLOORS, FULL-HEIGHT WALLS/PARTITIONS, ACOUSTICALLY INSULATED WALLS/PARTITIONS, AND SOUND-RATED WALLS/PARTITIONS, TO MAINTAIN THE ACOUSTICAL INTEGRITY OF THOSE ASSEMBLIES.
- APPLY APPROPRIATE & COMPATIBLE SEALANT MATERIALS AS REQUIRED TO SEPARATE DISSIMILAR METALS, FILL GAPS IN EXISTING ASSEMBLIES OR WHERE NEW AND EXISTING ASSEMBLIES MEET OR WHERE OTHERWISE REQUIRED BY THE SPECIFICATIONS.
- BRING ANY UNFORESEEN OR CONFLICTING CONDITIONS TO THE IMMEDIATE ATTENTION OF THE ARCHITECT/ENGINEER BEFORE PROCEEDING WITH THE WORK.
- REPAIR, PATCH, OR REPLACE FINISH MATERIALS OR VISIBLE ASSEMBLIES THAT ARE SOILED, CUT OR DAMAGED IN ANY FASHION DURING THE COURSE OF THE WORK. PERFORM PATCHING SUCH THAT EDGES BLEND INTO CONTIGUOUS SURFACES SMOOTHLY, MATCHING TEXTURE AND COLOR OF ADJACENT SURFACES.
- OWNER WILL CONTINUE TO OCCUPY AREAS ADJACENT TO THE PROJECT AREAS DURING THE CONSTRUCTION PERIOD. COORDINATE WITH OWNER TO MINIMIZE CONFLICT AND TO FACILITATE OWNER'S OPERATIONS. LIMIT CONDUCT OF ESPECIALLY NOISY OR DISRUPTIVE WORK TO ONLY THOSE TIMES MUTUALLY AGREED TO BY OWNER. REQUEST MUTUALLY AGREEABLE TIME FROM OWNER PRIOR TO CONDUCTING SUCH WORK, AND PROCEED WITH SUCH WORK ONLY AFTER RECEIVING OWNER'S EXPRESS PERMISSION TO DO SO.

C. BIDDING NOTES

- GENERAL CONTRACTOR TO PROVIDE A \$5,000 ALLOWANCE IN HIS/HER BID FOR UNFORESEEN/MISCELLANEOUS CONDITIONS. WHEN FIGURING THIS ALLOWANCE IN THE BID, CONTRACTOR IS TO INCLUDE ALL NECESSARY OVERHEAD AND PROFIT. THIS ALLOWANCE IS NOT FOR THE CONTRACTOR'S BENEFIT, AND IS ONLY AUTHORIZED TO CHARGE AGAINST THIS ALLOWANCE WHEN DIRECTED AND APPROVED BY JOLIET JUNIOR COLLEGE. THE CONTRACTOR WILL BE ALLOWED TO INVOICE FOR MATERIAL AND RAW LABOR COST ONLY.
- CONSTRUCTION SCHEDULE:

START: MAY 19, 2014
COMPLETE: MAY 30, 2014

STANDARD ABBREVIATIONS

Ⓢ	— AT	EXP	— EXPANSION	PL	— PLATE
A-B	— ANCHOR BOLT	EXP CONST	— EXPOSED CONSTRUCTION	PL LAM	— PLASTIC LAMINATE
ABR	— ABRASIVE	FD	— FOUNDATION	PL	— PLASTER
AT-(1)	— ACOUSTIC TILE CEILING (TYPE)	FDN	— FOUNDATION	PLB'G	— PLUMBING
AF	— ABOVE FINISH FLOOR	FE	— FIRE EXTINGUISHER	PLB'G CONTR	— PLUMBING CONTRACTOR
AFG	— ABOVE FINISH GRADE	FEC	— FIRE EXTINGUISHER CABINET	PLYWD	— PLYWOOD
ACOUS	— ACOUSTIC	FHC	— FIRE HOSE CABINET	PNT	— PAINT
ADD'N	— ADDITION	FIN	— FINISH	PVC	— POLYVINYL CHLORIDE
ADD'L	— ADDITIONAL	FLN	— FLOOR	PL-(1)	— GYPSUM PLASTER (TYPE)
ADJ	— ADJACENT	FRT	— FIRE RETARDANT TREATED (RATED)	R OR RAD	— RADIUS
ADJT	— ADJUSTABLE	FUR CHN'L	— FURRING CHANNEL	R	— RISER
AL	— ALUMINUM	FTG	— FOOTING	RD	— ROOF DRAIN
ALT	— ALTERNATE	GA	— GAUGE	RO	— ROUGH OPENING
ANCH	— ANCHOR	GALV	— GALVANIZED	RF (1)	— RUBBER FLOORING (TYPE)
AP	— ACCESS PANEL	GEN CONTR	— GENERAL CONTRACTOR	RH	— RIGHT HAND
APPROX	— APPROXIMATE	GC	— GENERAL CONTRACTOR	REF	— REFERENCE
ASPH	— ASPHALT	GL	— GLASS	REINF	— REINFORCING
AUTO	— AUTOMATIC	GYP DB-(1)	— GYPSUM WALL BOARD (DRYWALL)(TYPE)	REQ'D	— REQUIRED
AVG	— AVERAGE	GYP PL-(1)	— GYPSUM PLASTER (TYPE)	RM	— ROOM
B5MT	— BASEMENT	H	— HIGH	SF	— SQUARE FOOT
BD	— BOARD	HD	— HEAVY DUTY	SI	— SQUARE INCH
BITUM	— BITUMINOUS/BITUMASTIC	HD	— HARD	SK	— SINK
BLDG	— BUILDING	HDNR	— HARDENER	SS	— STAINLESS STEEL
BLK'G	— BLOCKING (WOOD)	HD WD-(1)	— HARD WOOD (TYPE)	SSK	— SERVICE SINK
BM	— BEAM	HDWRE	— HARDWARE	SQ	— SQUARE
B.M.	— BENCH MARK	HGT	— HEIGHT	SCHED	— SCHEDULE
BT STL PL	— BENT STEEL PLATE	HM	— HOLLOW METAL	SEAL/HDNR	— SEALER/HARDENER
BRG	— BEARING	HP	— HIGH POINT	SEC	— SECTION
BRKT	— BRACKET	HORIZ	— HORIZONTAL	SHT	— SHEET
BRK	— BRICK	HTG	— HEATING	SIM	— SIMILAR
BTM	— BOTTOM	HVAC	— HEATING/VENTILATING/AIR CONDITIONING	SOG	— SLAB ON GRADE
BTWN	— BETWEEN	IN	— INCH	SPEC	— SPECIFICATION(S)
CJ	— CONSTRUCTION/CONTRACTION JOINT	ID	— INSIDE DIAMETER	SPC'G	— SPACING
CAB	— CABINET	INCL	— INCLUDE (D)	SPK'R	— SPEAKER
CEM PL-(1)	— CEMENT PLASTER (TYPE)	INSUL	— INSULATION OR INSULATING	STN	— STN
CT PAV-(1)	— CERAMIC PAVEMENT TILE (TYPE)	JT	— JOINT	STD	— STANDARD
CIP	— IN-PLACE CONCRETE	KD	— KNOCK DOWN	STD WGT	— STANDARD WEIGHT
CLG	— CEILING	L	— LONG	L	— STEEL
CLR	— CLEAR	LAM	— LAMINATED	STRUCT	— STRUCTURAL OR STRUCTURE
CO	— CLEAN OUT	LAV	— LAVATORY	SUSP	— SUSPEND(ED)
OMU	— CONCRETE MASONRY UNIT	LH	— LEFT HAND	SYM	— SYMMETRICAL
COL	— COLUMN	LP	— LOW POINT	T&G	— TONGUE AND GROOVE
COMB	— COMBINATION	LGT WGT	— LIGHTWEIGHT	T/B	— TOP OF BEAM
COMP	— COMPRESSIBLE	LL	— LIVE LOAD	T/C	— TOP OF CURB
COMP'D	— COMPACTED	LLH	— LONG LEG HORIZONTAL	T/F	— TOP OF FOUNDATION
CONC	— CONCRETE	LLV	— LONG LEG VERTICAL	T/S	— TOP OF SLAB
CONC OPNG	— CONCRETE OPENING	LVR	— LOUVER	T/STL	— TOP OF STEEL
COND	— CONDITION	MO	— MASONRY OPENING	T/W	— TOP OF WALL
CONT	— CONTINUOUS	MT	— METAL THRESHOLD	TB (4)	— TACKBOARD (LENGTH)
CONTR	— CONTRACT (OR)	MAS'Y	— MASONRY	TOM	— TOP OF MASONRY
CPT-(1)	— CARPET (TYPE)	MATL	— MATERIAL	TYP	— TYPICAL
CT-(1)	— CERAMIC TILE (TYPE)	MAX	— MAXIMUM	UNO	— UNLESS NOTED OTHERWISE
CTR	— COUNTER	MB-(16)	— MARKERBOARD-- (LENGTH)	VBC	— VINYL BASE COVERED
CTR SK	— COUNTER SINK	MECH	— MECHANICAL	VBS	— VINYL BASE STRAIGHT
CTS	— CENTER(S)	MFR CONTR	— MECHANICAL CONTRACTOR	VCT	— VINYL COMPOSITION TILE
CUH	— CABINET UNIT HEATER	MFR	— MANUFACTURER	VEN PL (1)	— VENEER PLASTER (TYPE)
CUV	— CABINET UNIT VENTILATOR	MIN	— MINIMUM	VERT	— VERTICAL
DIA	— DIAMETER	MISC	— MISCELLANEOUS	W	— WIDE OR WIDTH
DIM	— DIMENSION	MSB	— MOP SERVICE BASIN (SINK)	W/	— WITH
DN	— DOWN	MT(D)	— METAL	W/O	— WITHOUT
DR	— DOOR	MTL	— METAL	WCG	— WALL CORNER GUARD
DWG'S	— DRAWINGS	NIC	— NOT IN CONTRACT	WD	— WOOD
DTL	— DETAIL	NOM	— NOMINAL	WDN	— WINDOW
DWL'S	— DOWELS	NTS	— NOT TO SCALE	WGT	— WEIGHT
EA	— EACH	NO	— NUMBER	WF	— WATER PROOF
EJ	— EXPANSION JOINT	OA	— OVERALL	WWF	— WELDED WIRE FABRIC
EL	— ELEVATION	OC	— ON CENTER	WSB	— WALL SERVICE BASIN
ELEC	— ELECTRIC/ELECTRICAL	OD	— OUTSIDE DIAMETER		
ELEC CONTR	— ELECTRICAL CONTRACTOR	OF	— OUTSIDE FACE		
ELEV	— ELEVATOR	OPN'G	— OPENING		
EMBED	— EMBEDMENT	OPP	— OPPOSITE		
EMER	— EMERGENCY	OPP HD	— OPPOSITE HAND		
EP PNT	— EPOXY PAINT	PSF	— POUNDS PER SQUARE FOOT		
EQ	— EQUAL	PSI	— POUNDS PER SQUARE INCH		
EW	— EACH WAY	PT	— PRESSURE TREATED		
EWV	— ELECTRIC WATER COOLER	PTN	— PARTITION		
EWVH	— ELECTRIC WATER HEATER	PAYVT	— PAVEMENT		
EXH (26)	— EXHIBIT RAIL (LENGTH)	PC	— PIECE		
EXIST	— EXISTING	PFM	— PERMANENT FLOOR MAT		

THE MATERIALS, ABBREVIATIONS, AND DRAFTING SYMBOLS LEGEND ARE EACH AN ALL INCLUSIVE MASTER LIST USED BY THIS FIRM. THE INCLUSION OF THESE LEGENDS INTO THESE DOCUMENTS DOES NOT IMPLY THAT ALL THE SYMBOLS OR MATERIALS INCLUDED IN THESE LEGENDS ARE INCORPORATED INTO THIS PROJECT.

DRAFTING MATERIALS LEGEND

DETAIL NUMBER DRAWING NUMBER	8 412.24
DETAIL NUMBER DRAWING NUMBER	23 A7.19
DETAIL NUMBER DRAWING NUMBER	1 A6.05
KEYNOTE IDENTIFICATION	15.21
	INSULATION RIGID
	BLOCKING DISCONTINUOUS
	BLOCKING CONTINUOUS



PROJECT JOLIET JUNIOR COLLEGE -
ROMEOVILLE CAMPUS
BOILER REPLACEMENT
JJC PROJECT NO. JJC-14-582

OWNER JOLIET JUNIOR COLLEGE
1215 HOUBOLT ROAD
JOLIET, IL 60431

**ARCHITECT/
ENGINEER** KLUBER, INC.
10 S. SHUMWAY AVE.
BATAVIA, ILLINOIS 60510
TEL 630-406-1213
FAX 630-406-9472
www.kluberinc.com

SEALS & CERTIFICATES

MECHANICAL ENGINEER'S SEAL	ELECTRICAL ENGINEER'S SEAL
"G" SERIES "ME" SERIES	"G" SERIES "ME" SERIES

I HAVE PREPARED, OR CAUSED TO BE PREPARED UNDER MY DIRECT SUPERVISION, THE ATTACHED PLANS AND SPECIFICATIONS AND STATE THAT TO THE BEST OF MY KNOWLEDGE AND BELIEF, AND TO THE EXTENT OF MY CONTRACTUAL OBLIGATION, THEY ARE IN COMPLIANCE WITH IBC 2003 EDITION, THE ENVIRONMENTAL BARRIERS ACT AND THE ILLINOIS ACCESSIBILITY CODE.

KLUBER, INC. ILLINOIS PROFESSIONAL DESIGN FIRM LICENSE #184-001284

INDEX OF DRAWINGS

G100	COVER SHEET, GENERAL NOTES, SYMBOLS, & DRAWING INDEX
ME310	MECHANICAL & ELECTRICAL FLOOR PLANS
M410	MECHANICAL SCHEDULES AND DETAILS

KLUBER Architects + Engineers

Kluber, Inc.
Batavia, Illinois 60510
Tel. 630.406.1213
Gurnee, Illinois 60031
Tel. 847.730.9470
www.kluberinc.com

JOLIET JUNIOR COLLEGE - ROMEOVILLE CAMPUS- BOILER REPLACEMENT

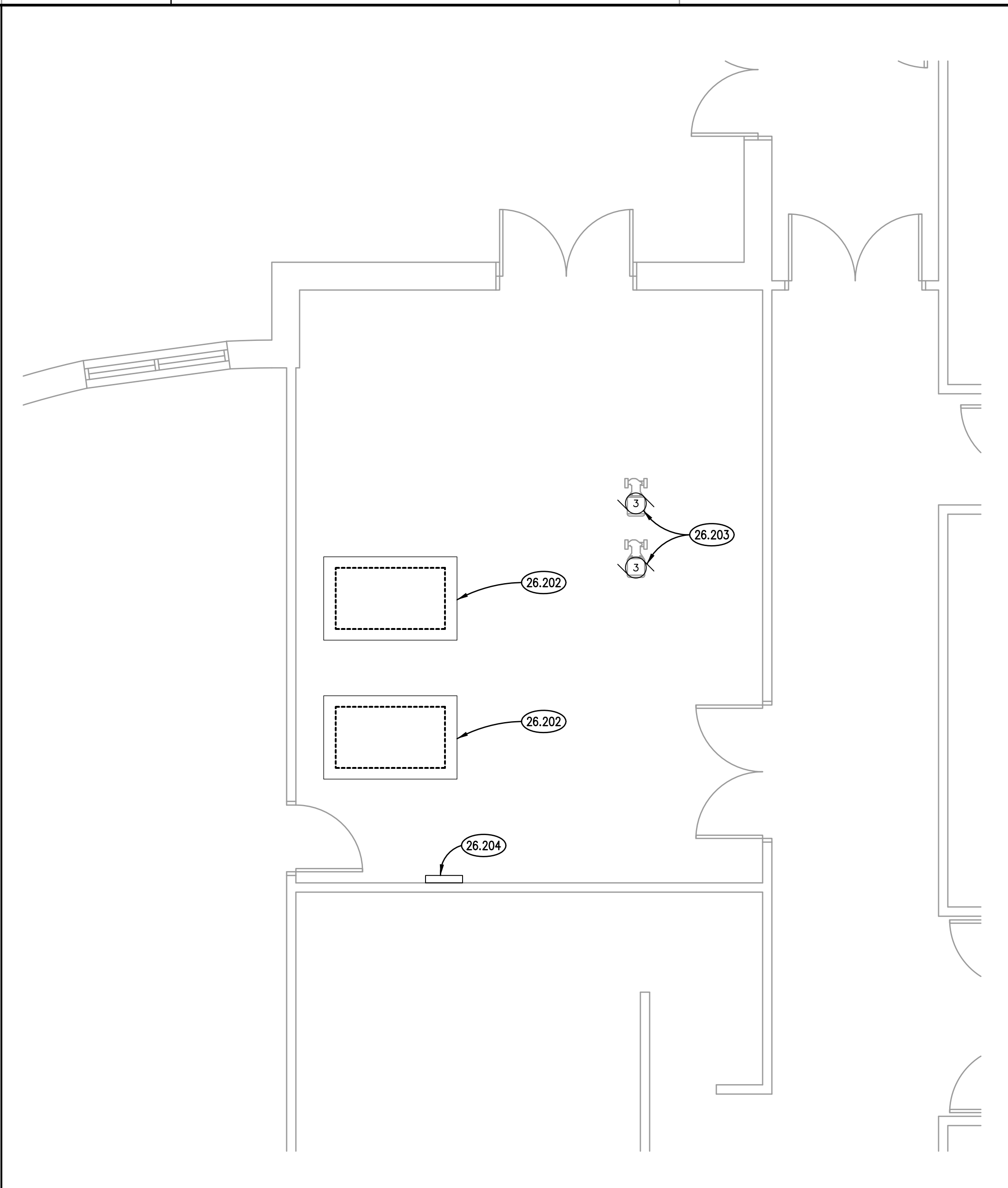
JOLIET JUNIOR COLLEGE
1125 WEST ROMEO ROAD
ROMEOVILLE, IL 60446

ISSUED
02/27/14 BID DOCUMENTS

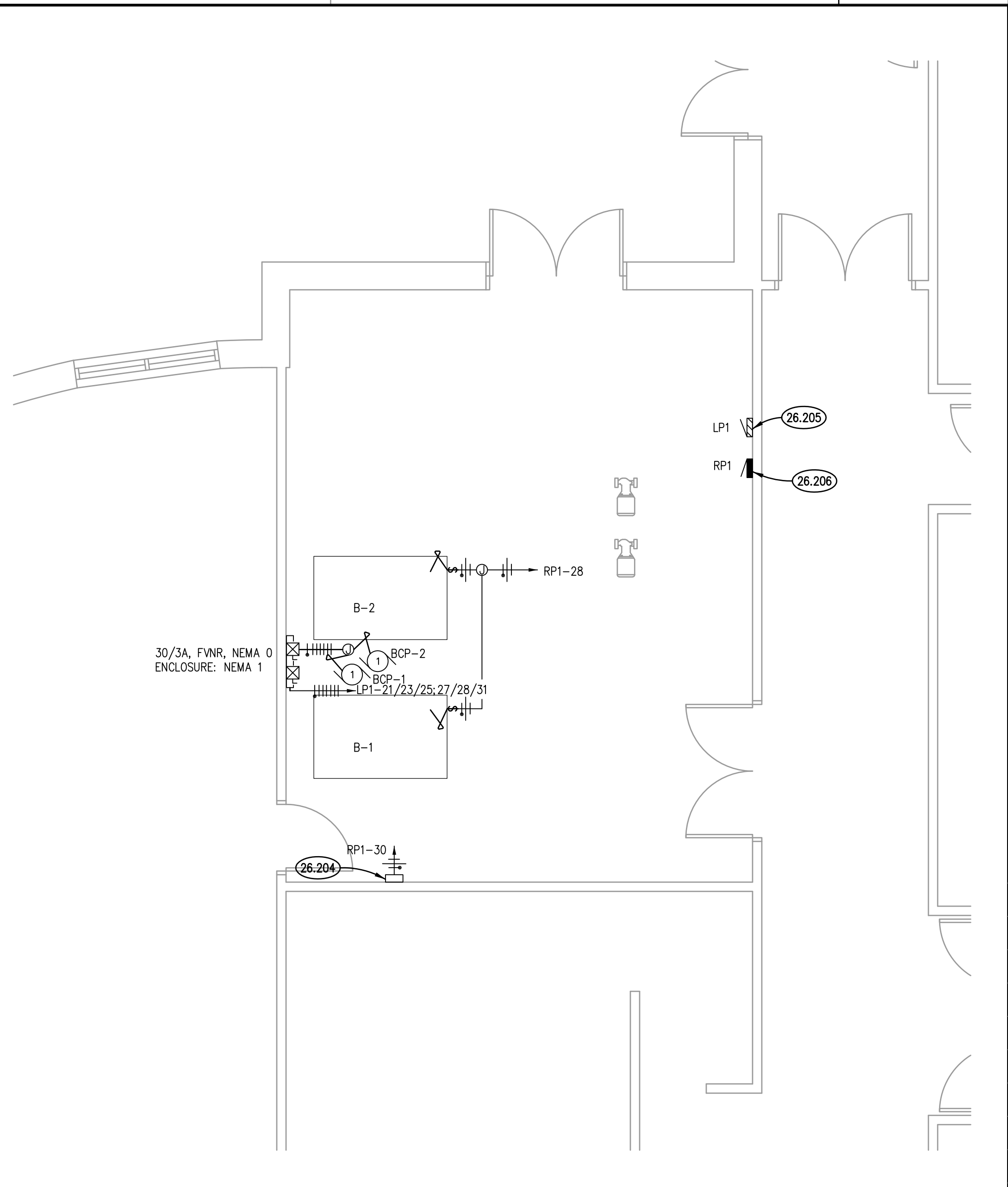
JOB NO.	14-292-879
DRAWN	JMB
CHECKED	JMB
APPROVED	JMB

SHEET TITLE
COVER SHEET

SHEET NUMBER
G100



ELECTRICAL DEMOLITION PLAN
SCALE: 1/4" = 1'-0" ②



ELECTRICAL PLAN
SCALE: 1/4" = 1'-0" ②

KEYNOTES

- 3.012 EXISTING CONCRETE SLAB.
- 23.101 REMOVE ALL ASSOCIATED TEMPERATURE CONTROL WIRING AND INTERFACE TO CAMPUS BUILDING AUTOMATION SYSTEM.
- 23.102 REMOVE BOILER AND ALL ASSOCIATED SPECIALTIES. REMOVE GAS PIPE AND SPECIALTIES PROVIDE TEMPORARY CAP FOR NEW CONNECTION.
- 23.103 REMOVE SECTIONS OF HYDRONIC PIPE AND PROVIDE TEMPORARY CAP ON SECTIONS TO REMAIN FOR NEW CONNECTION. REFER TO NEW WORK PLAN FOR NEW PIPING CONFIGURATION.
- 23.104 EXISTING COMBUSTION AIR DUCTWORK AND DAMPERS TO REMAIN.
- 23.105 REMOVE BOILER EXHAUST VENT IN ITS ENTIRETY UP THROUGH THE ROOF. CAP PENETRATION THROUGH THE ROOF AIR TIGHT AND INSULATE BELOW THE ROOF WITH MINIMUM 6 INCHES THICK FACED FIBERGLASS.
- 23.106 REMOVE SECTION OF BOILER EXHAUST VENT. RECONFIGURE EXHAUST VENT FOR CONNECTION TO NEW BOILER VENTS. REFER TO NEW WORK PLAN.
- 23.201 PROVIDE NEW BOILER, ALL ASSOCIATED SPECIALTIES AND PIPING.
- 23.202 PROVIDE COMBINED BOILER EXHAUST VENT AND CONNECT TO EXISTING EXHAUST VENT. EXHAUST VENT SHALL BE OF MATERIAL, SIZE AND CONFIGURATION AS APPROVED BY BOILER MANUFACTURER.
- 23.203 PROVIDE BOILER INLINE PUMP, ALL ASSOCIATED SPECIALTIES AND PIPING.
- 23.204 PROVIDE INTERFACE OF BOILER CONTROL PANEL AND POINTS TO BUILDING AUTOMATION SYSTEM. PROVIDE ACCURATE GRAPHICS FOR NEW BOILER TYPE. REMOVE ALL DEMO'D EQUIPMENT AND ASSOCIATED POINTS FROM CONTROL SYSTEM AND GRAPHICS.
- 23.205 PROVIDE EMERGENCY SHUT DOWN SWITCH CONNECTIONS TO NEW BOILERS.
- 23.206 PROVIDE GAS CONNECTION TO BOILERS FROM EXISTING GAS MAIN. PROVIDE PRESSURE REGULATOR FOR EACH BOILER AS REQUIRED. FIELD VERIFY MECHANICAL ROOM GAS PRESSURE.
- 26.202 REMOVE EXISTING ELECTRICAL FEED TO BOILER. PROVIDE NEW CIRCUIT AND FINAL CONNECTION TO NEW BOILER AS REQUIRED.
- 26.203 EXISTING PUMP P1 AND P2 TO REMAIN.
- 26.204 EXISTING ELECTRICAL FEED TO CONTROL PANEL TO REMAIN. PROVIDE NEW CIRCUIT AND FINAL CONNECTION AS REQUIRED.
- 26.205 PROVIDE 2 (QUANT) 20/3 BREAKER AT PANELBOARD LP1 FOR NEW PUMPS BCP-1 AND BCP-2 (SQUARE D NEHB, 22K AIC).
- 26.206 REUSE 20/2 BREAKER SPARE BREAKER AT RP1-28/30 (ABAONDED UPS BRANCH CIRCUIT).

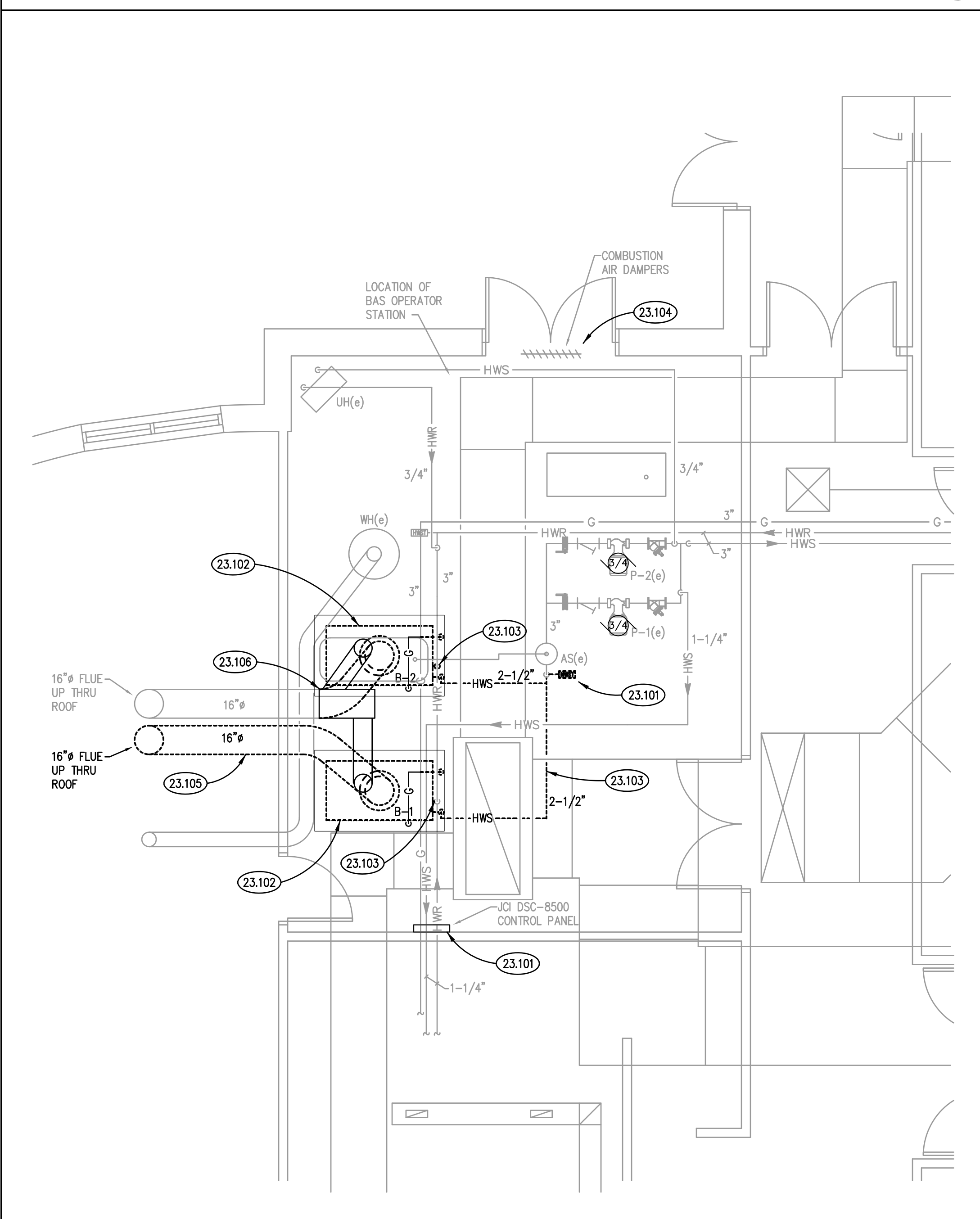
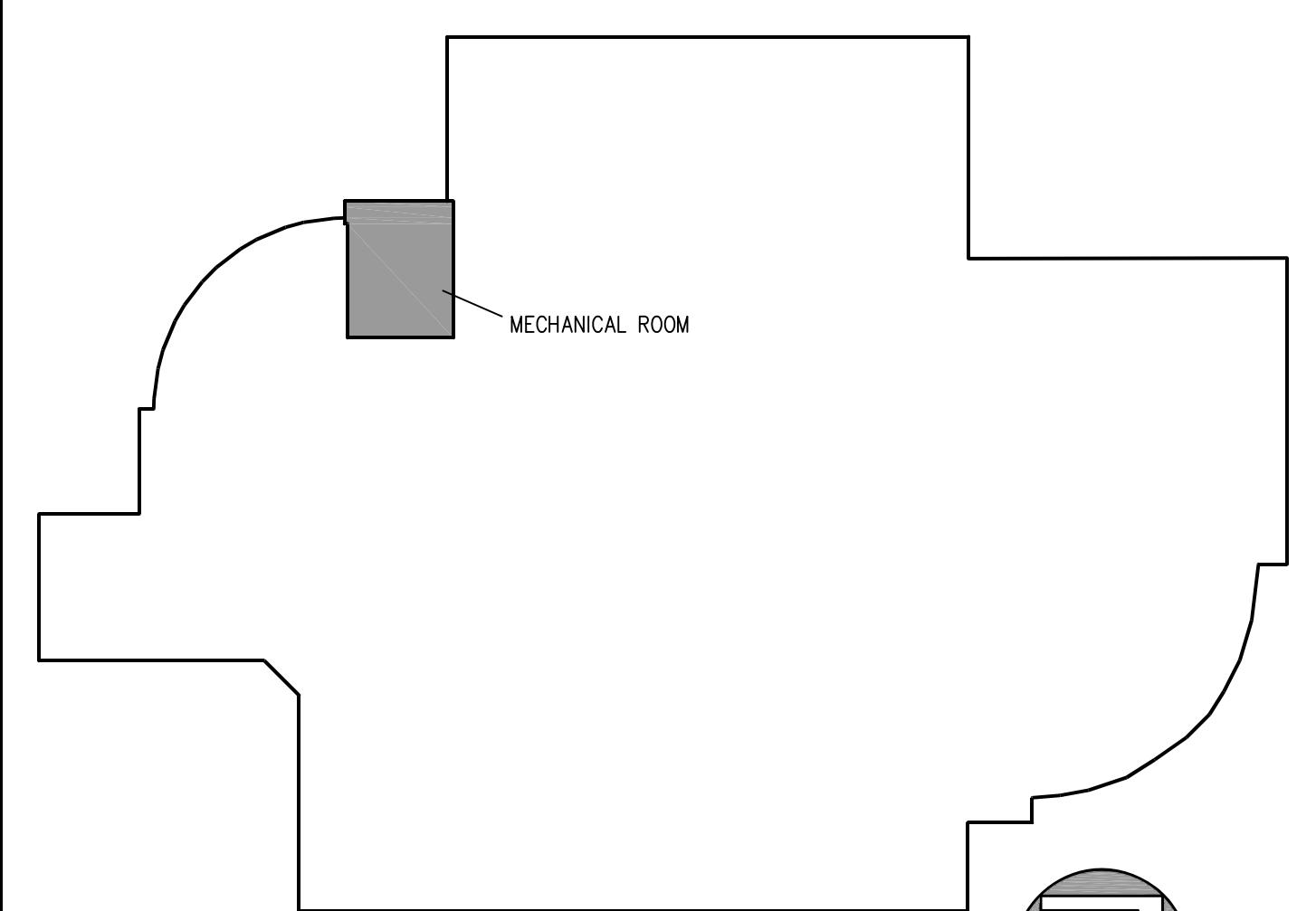
ELECTRICAL SYMBOLS LIST

	MANUAL SWITCH, POLES AS INDICATED (SINGLE POLE OTHERWISE).
	DUPLX RECEPTACLE, 20A 125V 2P 3W GRD. NEMAS-20R. Ø1/8" AFF. Ø=DEDICATED CIRCUIT. 1" = MTD. Ø4/8" AFF. OR Ø6" ABOVE COUNTER.
	MOTOR. HP= HORSE-POWER RATING.
	COMBINATION FVNR STARTER/DISCONNECT.
	PANEL 240V & BELOW.
	PANEL ABOVE 240V.
	JUNCTION BOX.
	FLEXIBLE CONDUIT CONNECTION.
	WIRING IN CONDUIT CONCEALED ABOVE CEILING, IN WALL AND UNDER FLOOR OR UNDERGROUND.
	WIRING IN CONDUIT EXPOSED ON CEILING OR WALL.
	BRANCH CIRCUIT WIRING IN CONDUIT HOMERUN TO PANEL, ONE ARROW PER HOMERUN, SLASHES INDICATE NUMBER OF CONDUCTORS.
	INDICATES GROUND CONDUCTOR.
	KEYNOTE IDENTIFICATION
	FIRE ALARM CONTROL PANEL

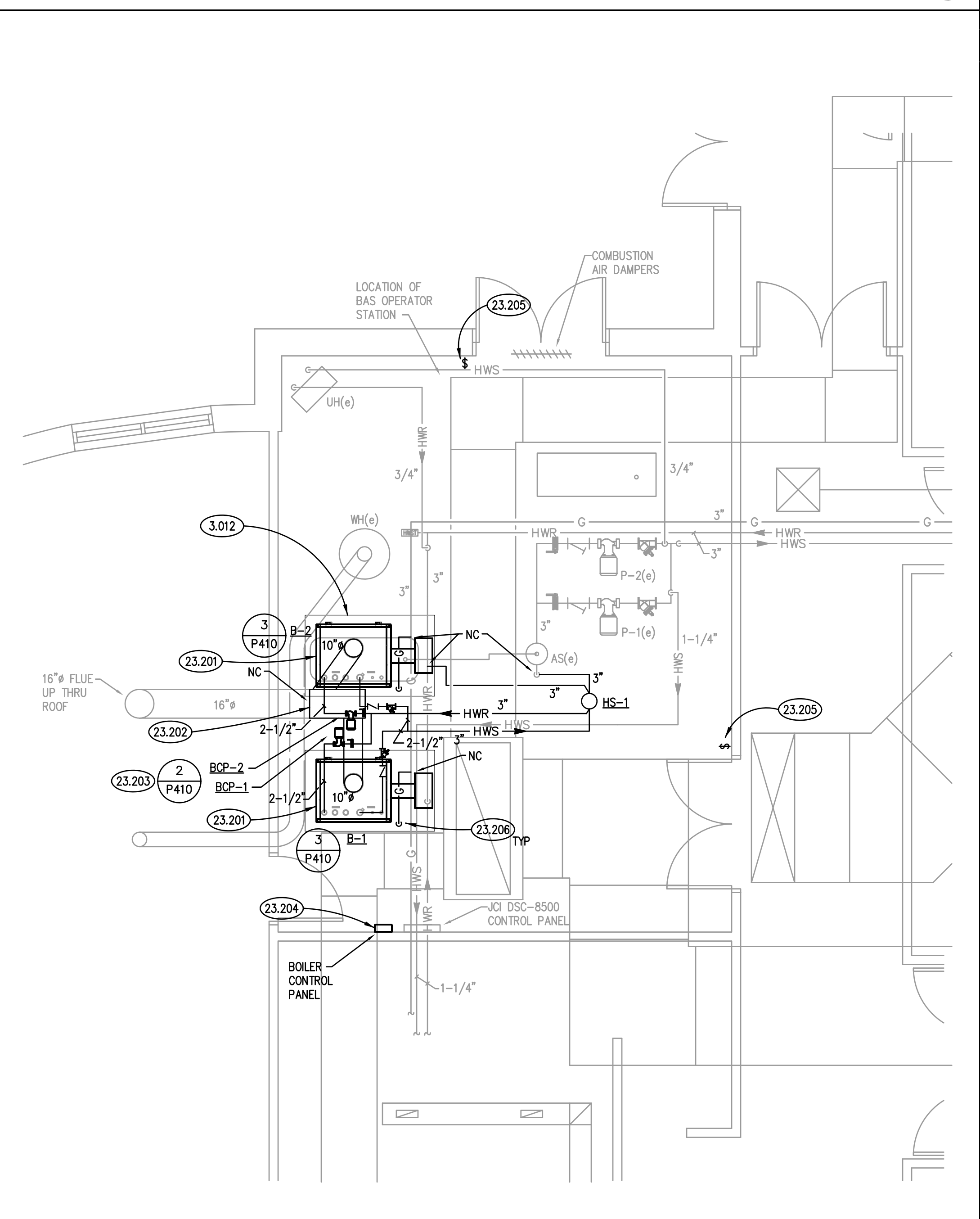
GENERAL NOTES

- REFER TO DRAWING G100 FOR PROJECT GENERAL NOTES.
- ALL PIPING IS SHOWN DIAGRAMMATICALLY AND DOES NOT SHOW ALL REQUIRED FITTINGS, OFFSETS, DROPS AND RISES. THE CONTRACTOR IS RESPONSIBLE TO PROVIDE ALL MATERIAL AND LABOR FOR A COMPLETE AND WORKING SYSTEM. COORDINATE WITH OTHER TRADES FOR SPACE AVAILABLE AND RELATIVE LOCATIONS OF EQUIPMENT, PIPING, CONTROLS, ETC.
- GENERALLY, SMALL DIAMETER PIPE RUNS FROM DRIPS, CONDENSATE PANS AND OTHER SERVICES ARE NOT SHOWN BUT MUST BE PROVIDED.
- SPACE ALLOCATION, COORDINATION WITH ELECTRICAL, ARCHITECTURAL & OTHER MECHANICAL COMPONENTS HAVE BEEN MADE WITH RESPECT TO ALL EQUIPMENT SCHEDULED ON THESE DRAWINGS AND IN THE SPECIFICATIONS OF THE FIRST NAMED MANUFACTURER ONLY. OTHER MANUFACTURERS ARE ACCEPTABLE PROVIDED THEY MEET PERFORMANCE REQUIREMENTS AND AFOREMENTIONED COORDINATION.

KEY PLAN



MECHANICAL DEMOLITION PLAN
SCALE: 1/4" = 1'-0" ③



MECHANICAL PLAN
SCALE: 1/4" = 1'-0" ③

ISSUED
10/27/14 BID DOCUMENTS

JOB NO.	14-292-879
DRAWN	xxx
CHECKED	xxx
APPROVED	xxx

SHEET TITLE
MECHANICAL AND ELECTRICAL FLOOR PLANS

SHEET NUMBER
ME310

PLAN NORTH

