



JOLIET JUNIOR COLLEGE
—1901—

2023-2027 Environmental Scan District 525 Demographics and Labor Market Trends

Joliet Junior College

January 2023

Institutional Research and Effectiveness

Table of Contents

Introduction	1
Characteristics by Race/Ethnicity	3
Characteristics by Age	4
Characteristics by Gender	7
Geographic Distribution of 525 District.....	9
Educational Attainment.....	14
Industry and Labor Market Analysis	19
Occupational Analysis.....	24
Labor Force.....	27



Introduction

Environmental scanning can be viewed as a kind of radar to scan the world systematically and signal the new, the unexpected, the major, and the minor¹. Institutions scan their environment to try and understand the external forces of change, as well as, to develop effective strategies to gain a competitive advantage by identifying threats and opportunities that may influence its current and future plans. The primary purpose of this document is to provide Joliet Junior College with a brief overview of key trends in the area of the district's demographics and labor market trends.

The scope of this report is to provide projections about demographics and workforce trends in the Joliet Junior College District for 2023-2027. The report breaks down the demographic composition of the JJC district in terms of race/ethnicity, age, gender, the geographic distribution of district residents, educational attainment, and labor market trends including labor force participation and occupational sector changes.

The Joliet Junior College district spans seven counties and covers 1,442 square miles. The information used for the compilation of demographics and labor market trends is calculated using zip code level data for the JJC district where available. The JJC district characteristics are compiled based on the following zip codes:

JJC District 525 Zip Codes Utilized			
60403	60432	60446	60481
60404	60433	60447	60487
60407	60434	60448	60490
60408	60435	60450	60491
60410	60436	60451	60541
60416	60437	60460	60544
60420	60439	60467	60585
60421	60440	60468	60586
60423	60441	60470	60935
60424	60442	60474	61313
60431	60444	60479	61360

¹ Developing Environmental Scanning/Forecasting Systems to Augment Community College Planning. (Morrison and Held, 1988).

-This Page Intentionally Left Blank-

Characteristics by Race/Ethnicity

The following Table is a brief analysis of all racial groups for the Joliet Junior College District. The information presented examines the characteristics aggregated from all zip codes, within the JJC district, as described in the introduction.

Table 1: Projected Overall Population Change (Number, Percent, and Racial/Ethnic Group) (2023-2027)

Race/Ethnicity	2023 Population	2027 Population	% of Total Projected	# Change	% Change
White, Non-Hispanic	474,876	451,932	62.5%	-22,944	-4.8%
Hispanic	140,349	150,354	20.8%	10,005	7.1%
Black/African American	70,027	71,645	9.9%	1,618	2.3%
Asian	33,254	35,104	4.9%	1,850	5.6%
Unknown/Other	12,106	12,811	1.8%	705	5.8%
American Indian or Alaskan Native	1,021	1,102	0.2%	81	7.9%
Native Hawaiian or Pacific Islander	164	205	0.0%	42	25.6%
Total	731,796	723,152	100.0%	-8,644	-1.2%

Table 1 informs us over the next 5 years:

- The JJC District Population has 731,796 residents
- The population for the JJC District is projected to decrease by 1.2% or -8,644 residents.
- The population of Hispanics/Latinos is projected to increase by 7.1% or +10,105 residents.
- The White, Non-Hispanic population is projected to decrease by 4.8% or -22,944 residents.
- The Asian population is projected to increase by 5.6% or +1,850 residents.
- The Black/African American population is projected to increase by 2.3% or +1,618 residents.

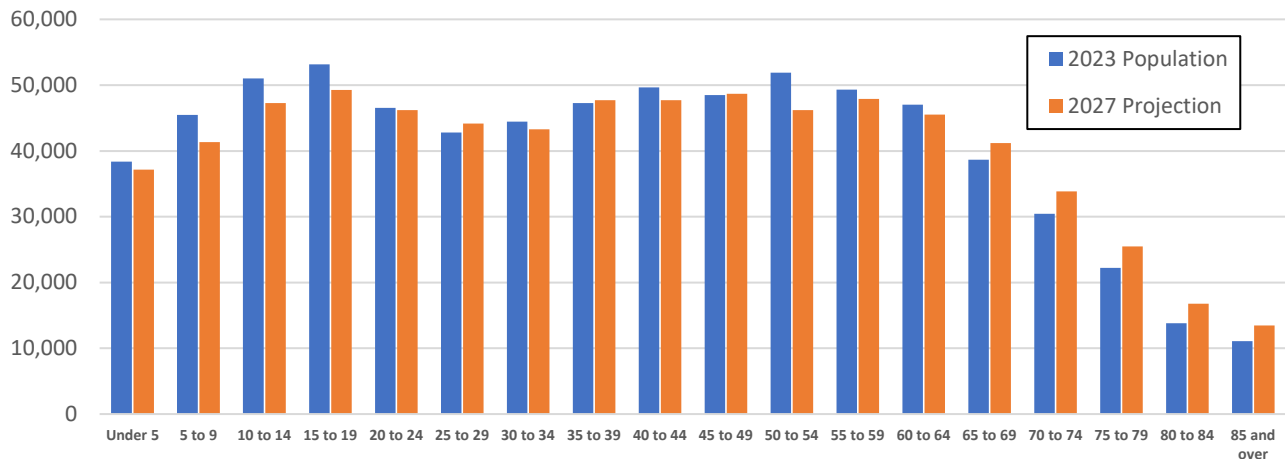
Possible Implications:

Changing educational needs for shifting demographics of the population within the JJC District.

Characteristics by Age

This section displays the age distribution in regards to District population estimates by age category.

Figure 1: Population by Age Category (2023-2027)



Age Category	2023 Population	2027 Population	# Change	% Change
Under 5	38,395	37,139	-1,256	-3.3%
5 to 9	45,458	41,329	-4,130	-9.1%
10 to 14	51,025	47,256	-3,768	-7.4%
15 to 19	53,161	49,248	-3,913	-7.4%
20 to 24	46,551	46,196	-355	-0.8%
25 to 29	42,800	44,179	1,379	3.2%
30 to 34	44,442	43,289	-1,153	-2.6%
35 to 39	47,279	47,717	438	0.9%
40 to 44	49,670	47,695	-1,975	-4.0%
45 to 49	48,498	48,698	200	0.4%
50 to 54	51,888	46,223	-5,665	-10.9%
55 to 59	49,336	47,915	-1,421	-2.9%
60 to 64	47,039	45,508	-1,531	-3.3%
65 to 69	38,641	41,192	2,551	6.6%
70 to 74	30,458	33,872	3,413	11.2%
75 to 79	22,240	25,459	3,219	14.5%
80 to 84	13,825	16,768	2,943	21.3%
85 and over	11,090	13,468	2,379	21.4%
Total	731,796	723,152	-8,644	-1.2%

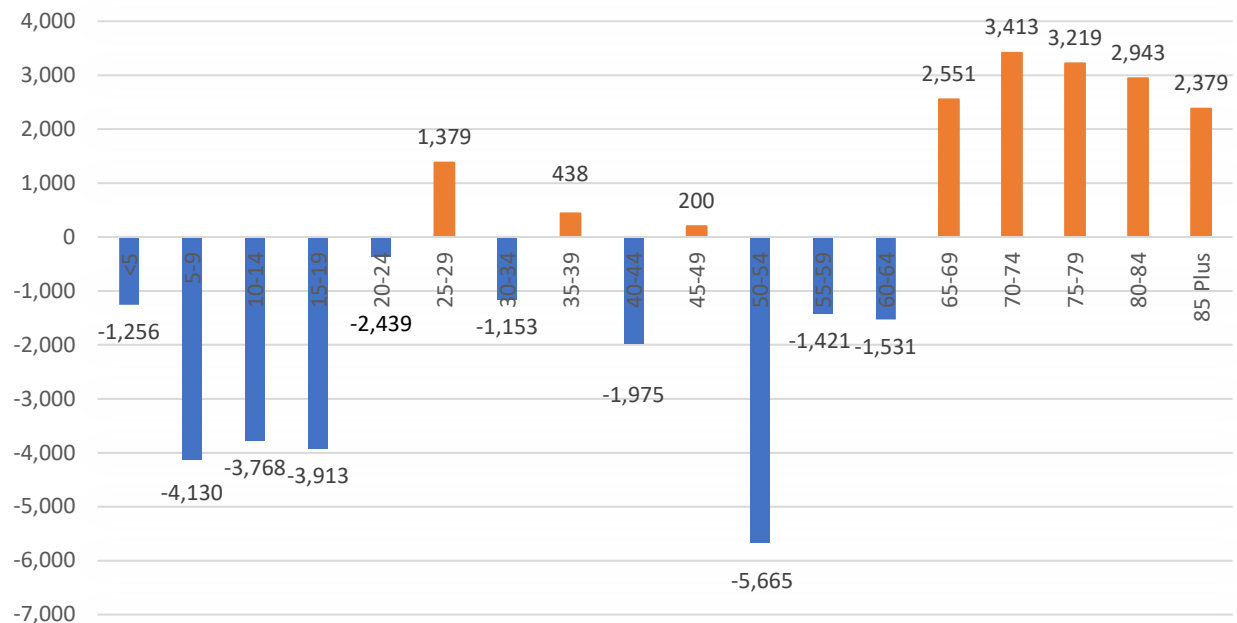
Figure 2: Projected Population Change by Age (2023-2027)

Figure 2 informs us from 2023-2027:

- Projections reflect a decrease among residents in those under 5 years through the 20-24 age groups, -13,421 individuals.
- Projections reflect an increase among residents in the age groups 25-29, 35-39, and 45-49, +2,017 individuals.
- Projections reflect an increase among residents 65- and above, +14,505 individuals.

Possible Implications:

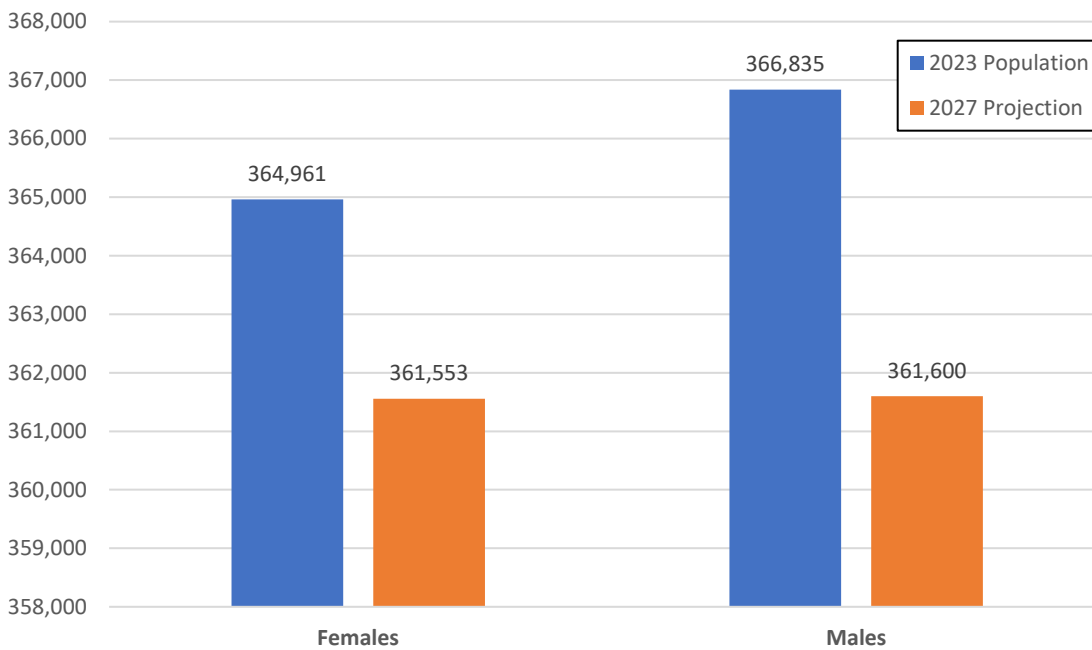
- Changing educational needs of an aging population as reflected by residents in the 65 and above age groups.
- Decline of new students based on those in age categories from under 5 to 24 years of age.
- Decline in enrollment for those under 64 years of age.
- Decline in pipeline of traditional students is flattening or decreasing

-This Page Intentionally Left Blank-

Characteristics by Gender

The section demonstrates the gender distribution District population estimates. The analysis reflects the projected characteristics for the next 5 years.

Figure 3: Projected Population Change by Age (2023-2027)



Gender	2023 Population	2027 Population	# Change	% Change
Females	364,961	361,553	-3,409	-0.9%
Males	366,835	361,600	-5,235	-1.4%
Total	731,796	723,152	-8,644	-1.2%

Figure 3 informs us from 2023-2027:

- Projections reflect a decrease among residents for both genders.

Possible Implications:

Further exploration by gender and racial and ethnic areas of stakeholders (included in subsequent scanning sections).

-This Page Intentionally Left Blank-

Geographic Distribution of District Population

The current section displays the geographic distribution of the 2019 District population by zip code. This section also demonstrates the projected percent change in the estimated population for the JJC district by zip code through 2027 on the following page.

Table 2: Projected Overall Population Change Number and Percent by JJC District Zip Codes (2023-2027)

Zip Code	City	2023 Population	2027 Projection	# Change	% Change
60440	Bolingbrook	57,818	59,085	1,267	2.2%
60435	Joliet	52,669	53,344	675	1.3%
60446	Romeoville	44,211	44,482	270	0.6%
60586	Plainfield	42,830	42,844	14	0.0%
60441	Lockport	38,358	37,677	-681	-1.8%
60451	New Lenox	35,175	33,984	-1,192	-3.4%
60423	Frankfort	33,562	32,167	-1,395	-4.2%
60544	Plainfield	29,828	29,210	-618	-2.1%
60448	Mokena	26,812	25,768	-1,044	-3.9%
60491	Homer Glen	24,384	23,395	-989	-4.1%
60450	Morris	23,764	23,633	-131	-0.6%
60467	Orland Park	23,669	22,213	-1,457	-6.2%
60585	Plainfield	23,647	23,607	-40	-0.2%
60432	Joliet	22,357	23,134	777	3.5%
60439	Lemont	22,217	20,964	-1,253	-5.6%
60490	Bolingbrook	21,694	21,959	265	1.2%
60404	Shorewood	20,454	19,817	-637	-3.1%
60431	Joliet	19,599	19,591	-7	0.0%
60436	Joliet	18,801	18,997	196	1.0%
60403	Crest Hill	18,535	18,303	-232	-1.3%
60487	Tinley Park	18,203	17,283	-920	-5.1%
60433	Joliet	17,058	17,333	276	1.6%
60481	Wilmington	12,101	11,462	-639	-5.3%

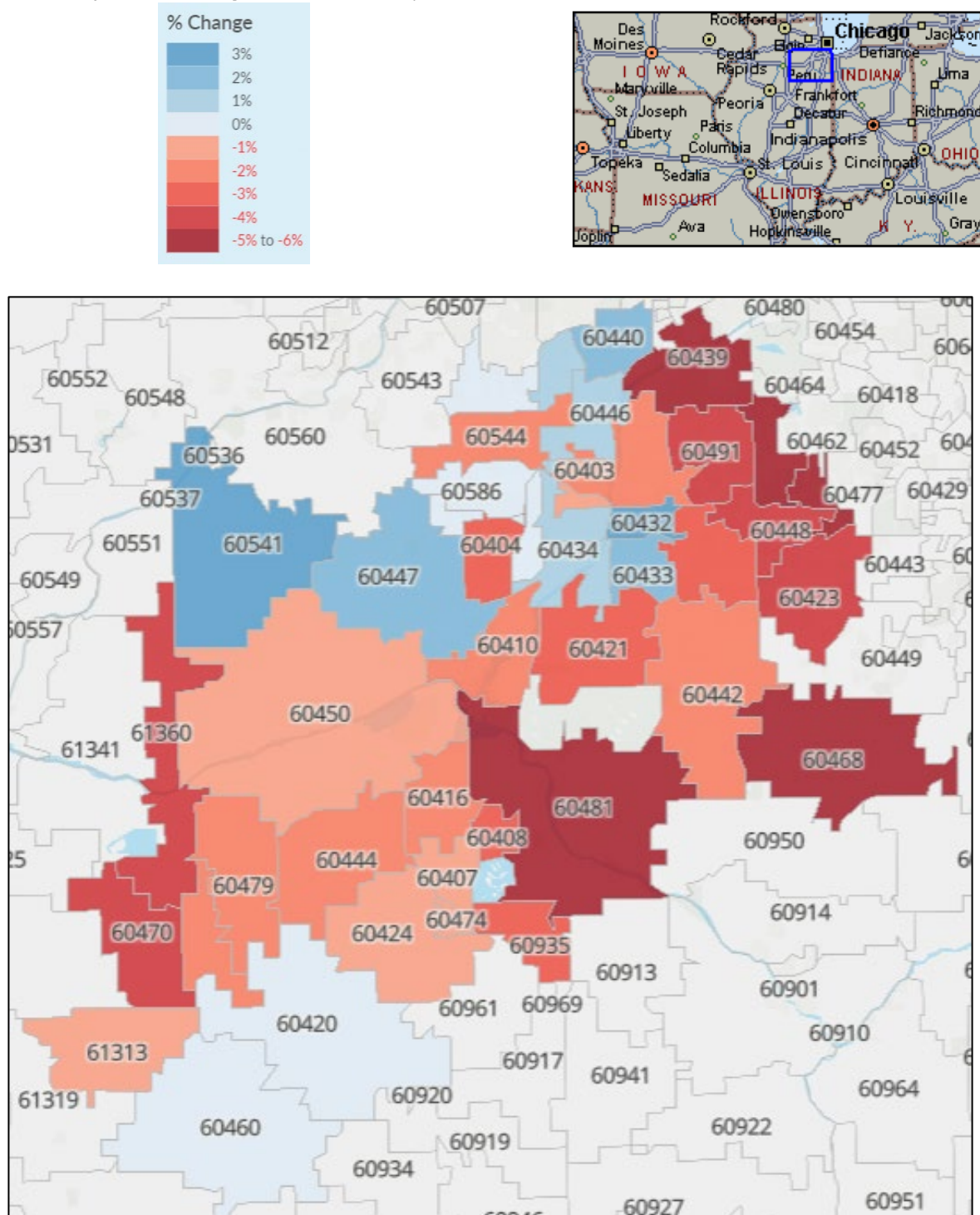
Zip Code	City	2023 Population	2027 Projection	# Change	% Change
60447	Minooka	11,258	11,531	273	2.4%
60442	Manhattan	11,187	10,924	-262	-2.3%
60410	Channahon	10,040	9,818	-221	-2.2%
60416	Coal City	9,920	9,696	-224	-2.3%
60468	Peotone	5,981	5,692	-289	-4.8%
60408	Braidwood	5,550	5,357	-193	-3.5%
60420	Dwight	4,645	4,667	22	0.5%
60434	Joliet	3,671	3,722	51	1.4%
60421	Elwood	3,663	3,549	-114	-3.1%
60541	Newark	3,442	3,554	113	3.3%
61360	Seneca	2,995	2,878	-117	-3.9%
60424	Gardner	2,814	2,782	-32	-1.1%
60444	Mazon	2,182	2,131	-51	-2.3%
60460	Odell	1,400	1,405	5	0.4%
60935	Essex	1,312	1,274	-38	-2.9%
60407	Braceville	1,223	1,211	-13	-1.0%
60474	South Wilmington	911	901	-9	-1.0%
60479	Verona	794	779	-15	-1.9%
60470	Ransom	543	519	-25	-4.5%
61313	Blackstone	264	262	-2	-0.8%
60437	Kinsman	256	250	-7	-2.6%
Total		731,796	723,152	-8,644	-1.2%

Figure 4: Geographic Distribution of JJC District Population 2023



Figure 5 below represents the projected percent change in the population for the JJC District by zip code (2023-2027) and was created using Microsoft MapPoint software. Please note the darker the area indicates the expected percent change is higher than the projected number of residents within that zip code.

Figure 5: Projected % Change in JJC District Population (2023-2027)



-This Page Intentionally Left Blank-

Educational Attainment

This section on Educational Attainment characterizes and describes the educational attainment of the JJC District population for adults 25 years old and above. Adult educational attainment is broken out by the following categories: (1) less than 9th grade (high school); (2) 9th to 12th grade; (3) high school diploma; (4) some college*; (5) associate's degree; (6) bachelor's degree; and (7) graduate degree or higher. Furthermore, educational attainment levels of the adult populations will be analyzed with a focus on associate and bachelor's degree attainment within the JJC District by gender and race/ethnicity. This information may be useful for determining educational needs for different race/ethnic segments of the population.

**The "some college" category includes individuals who attended college but did not successfully obtain a degree and individuals who have received a post-secondary vocational award or professional certification but did not receive an associate or bachelor's degree.*

The figures on the following pages reflect the educational attainment of the adult population over the age of 25 years. This may be utilized in identifying potential target markets and/or population segments with significant education attainment deficiencies.

Figure 6: Educational Attainment of Residents Over the Age of 25 Years (2023 Baseline 497,206)

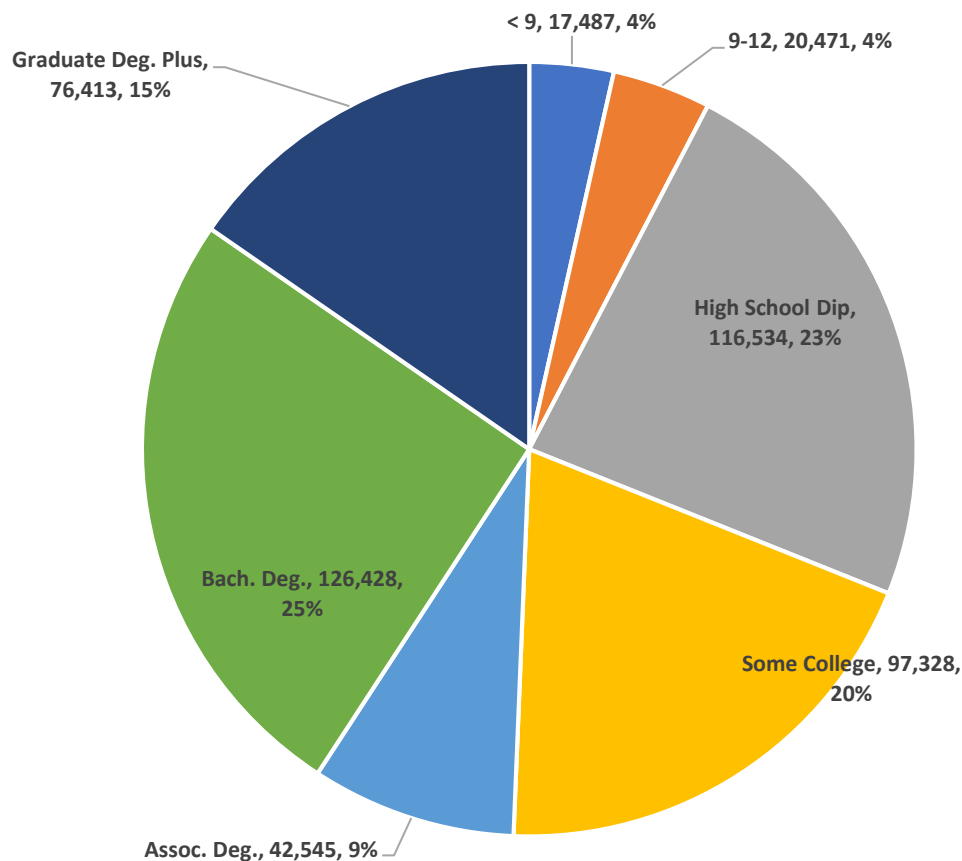


Figure 6 informs us in 2023:

- 23% of residents will have attained a high school diploma.
- 20% of residents will have had some college*.
- 25% of residents had attained a bachelor's degree.
- 15% of residents will have a graduate degree or higher.
- 9% of residents will have attained an associate's degree
- 4% of residents will have had between and 9-12 grade education.
- 4% of residents had less than a less than 9th grade (high school) education.

**The "some college" category includes individuals who attended college but did not successfully obtain a degree and individuals who have received a post-secondary vocational award or professional certification but did not receive an associate or bachelor's degree*

Figure 7: Projected Change in Educational Attainment of Residents Over the Age of 25 Years (2023-2027)

Education Level	2023 Population	2027 Population	# Change	% Change
Less Than 9th Grade	17,487	17,519	32	0.2%
9th Grade to 12th Grade	20,471	19,754	-717	-3.5%
High School Diploma	116,534	116,413	-121	-0.1%
Some College	97,328	95,740	-1,588	-1.6%
Associate's Degree	42,545	44,045	1,500	3.5%
Bachelor's Degree	126,428	130,069	3,641	2.9%
Graduate Degree and Higher	76,413	78,413	2,000	2.6%
Total	497,206	501,953	4,747	1.0%

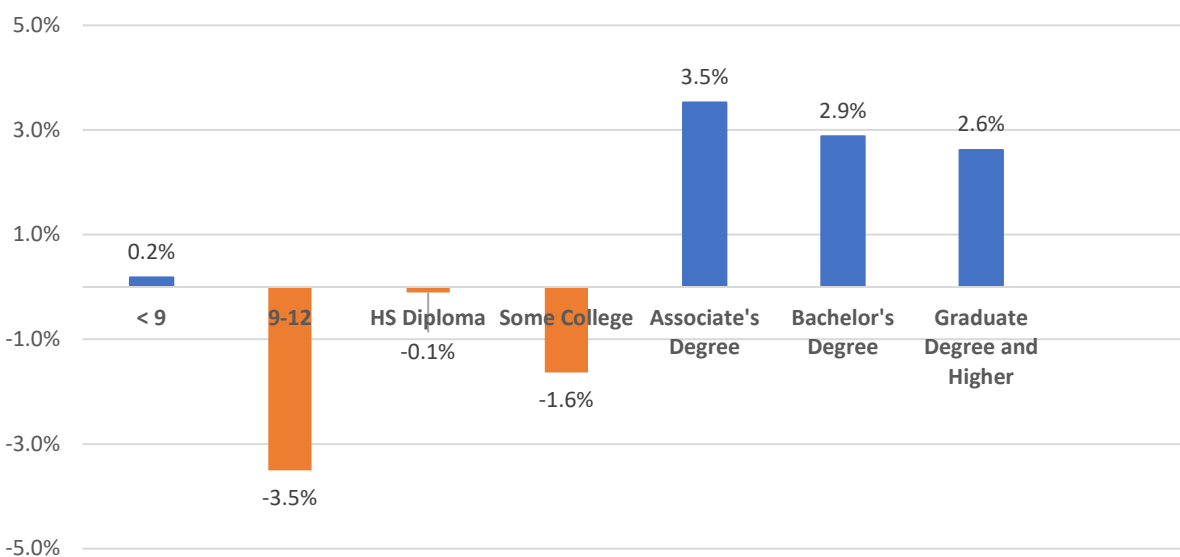


Figure 7 informs us in between 2023-2027:

- Educational attainment for residents' of a 9-12 grade education is projected to decrease by 3.5%, suggesting more residents will advance to high school, but may not obtain a high school diploma.

Possible Implications:

- Setting measurable recruitment and enrollment goals to enroll more area residents.
- Setting measurable goals to increase area residents' attainment of associate's degree.
- Increased demand for access to college coursework through Dual Credit offerings.

Table 2: Distribution in Educational Attainment of Residents Over the Age of 25 Years for Condensed Categories by Race/Ethnicity (2023-2027)

Race/Ethnicity	2023 Population	2027 Population	2023 < Than HS	2023 HS Diploma	2023 College
White, Non-Hispanic	341,245	331,599	12,133	151,260	177,852
Black, Non-Hispanic	68,872	77,196	18,085	33,094	17,693
American Indian or Alaskan Native, Non-Hispanic	38,126	40,370	3,601	19,341	15,184
Asian, Non-Hispanic	43,184	46,113	3,346	7,362	32,476
Native Hawaiian or Pacific Islander, Non-Hispanic	4,970	5,742	636	2,453	1,881
Two or More Races, Non-Hispanic	651	733	145	280	225
White, Hispanic	158	201	12	72	74
Total	497,206	501,953	37,959	213,862	245,386

-This Page Intentionally Left Blank-

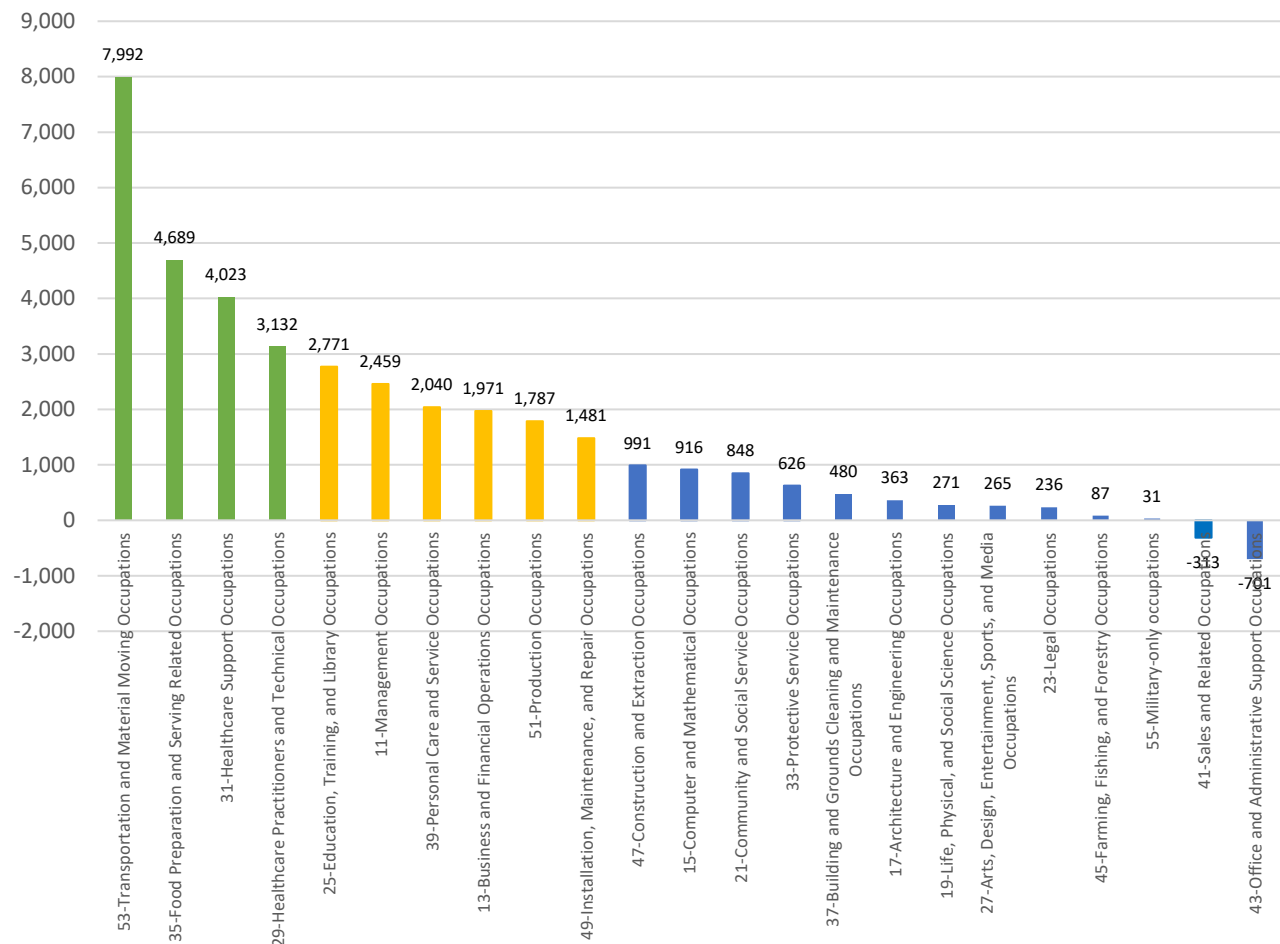
Industry and Labor Market Analysis

The following section includes industry projections not only for the JJC District zip codes, but also the seven counties JJC spans that may overarch the zip code areas to include all Will, Livingston, Grundy, Kendall, DuPage, La Salle, and Kankakee counties. The industry and occupation analysis below pulls data from these 44 zip codes and separate analysis for the seven counties from EMSI. Although JJC may not completely encompass these counties, understanding the needs of industry in and adjacent to the region is important.

The following table reflects the employment projections by the 2-Digit North American Industry Classification System (NAICS) code for the counties JJC spans. The North American Industry Classification System (NAICS) is the standard used by Federal statistical agencies in classifying business establishments for the purpose of collecting, analyzing, and publishing statistical data related to the U.S. business economy.

Table 3: Employment Projections by 2-NAICS Code and 7 County Area (2023-2027)

2-Digit NAICS	Description	2023 Jobs	2027 Jobs	# Change	% Change
11	Management Occupations	81,736	84,195	2,459	3.0%
13	Business and Financial Operations Occupations	62,291	64,263	1,971	3.2%
15	Computer and Mathematical Occupations	32,365	33,281	916	2.8%
17	Architecture and Engineering Occupations	13,725	14,088	363	2.6%
19	Life, Physical, and Social Science Occupations	7,580	7,851	271	3.6%
21	Community and Social Service Occupations	14,839	15,687	848	5.7%
23	Legal Occupations	5,548	5,784	236	4.3%
25	Education, Training, and Library Occupations	57,480	60,251	2,771	4.8%
27	Arts, Design, Entertainment, Sports, and Media Occupations	11,151	11,416	265	2.4%
29	Healthcare Practitioners and Technical Occupations	57,381	60,512	3,132	5.5%
31	Healthcare Support Occupations	37,592	41,614	4,023	10.7%
33	Protective Service Occupations	20,420	21,046	626	3.1%
35	Food Preparation and Serving Related Occupations	69,272	73,961	4,689	6.8%
37	Building and Grounds Cleaning and Maintenance Occupations	30,785	31,265	480	1.6%
39	Personal Care and Service Occupations	19,144	21,184	2,040	10.7%
41	Sales and Related Occupations	93,864	93,552	-313	-0.3%
43	Office and Administrative Support Occupations	132,266	131,564	-701	-0.5%
45	Farming, Fishing, and Forestry Occupations	2,215	2,302	87	3.9%
47	Construction and Extraction Occupations	37,414	38,405	991	2.6%
49	Installation, Maintenance, and Repair Occupations	40,684	42,166	1,481	3.6%
51	Production Occupations	69,950	71,737	1,787	2.6%
53	Transportation and Material Moving Occupations	134,307	142,299	7,992	6.0%
55	Military-only occupations	2,198	2,228	31	1.4%
Total		1,034,207	1,070,652	36,445	3.5%

Figure 8: Employment Projections – Change by 2-Digit NAICS Code and 7 County Area (2023-2027)

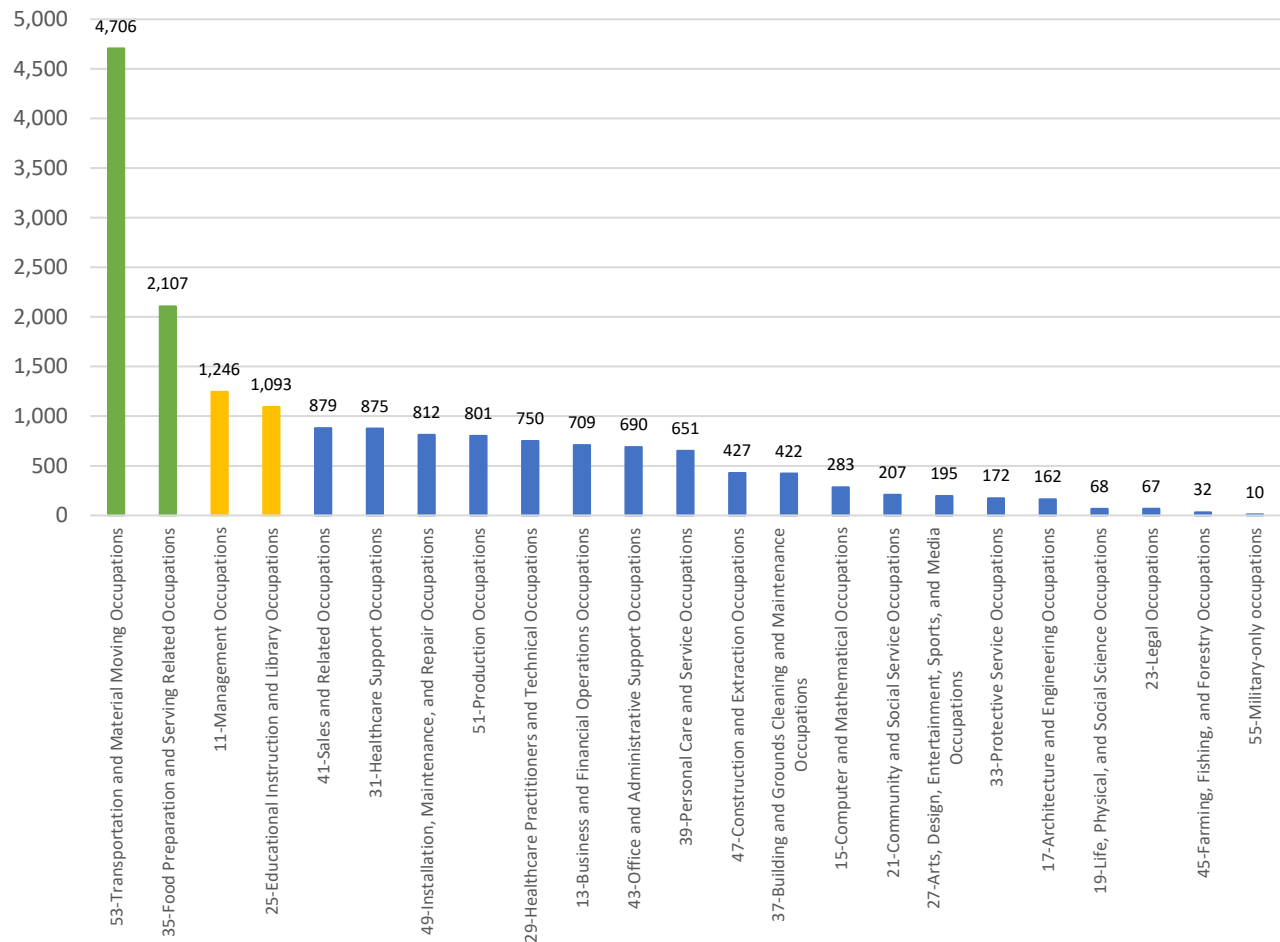
Projected Number Growth > or = to 3,000 Employees (2023-2027)

Projected Number Growth 1,000 – 2,999 Employees (2023-2027)

Projected Number Growth < or = to 1,000 Employees (2023-2027)

Table 4: Employment Projections by 2-NAICS Code and JJC District Zip Codes (2023-2027)

2-Digit NAICS	Description	2023 Jobs	2027 Jobs	# Change	% Change
11	Management Occupations	19,799	21,045	1,246	6.3%
13	Business and Financial Operations Occupations	12,537	13,246	709	5.7%
15	Computer and Mathematical Occupations	4,819	5,103	283	5.9%
17	Architecture and Engineering Occupations	3,036	3,198	162	5.3%
19	Life, Physical, and Social Science Occupations	1,765	1,833	68	3.8%
21	Community and Social Service Occupations	3,773	3,980	207	5.5%
23	Legal Occupations	1,174	1,241	67	5.7%
25	Education, Training, and Library Occupations	17,703	18,796	1,093	6.2%
27	Arts, Design, Entertainment, Sports, and Media Occupations	2,729	2,924	195	7.1%
29	Healthcare Practitioners and Technical Occupations	14,930	15,680	750	5.0%
31	Healthcare Support Occupations	9,057	9,932	875	9.7%
33	Protective Service Occupations	5,647	5,819	172	3.0%
35	Food Preparation and Serving Related Occupations	23,056	25,162	2,107	9.1%
37	Building and Grounds Cleaning and Maintenance Occupations	8,166	8,588	422	5.2%
39	Personal Care and Service Occupations	5,532	6,183	651	11.8%
41	Sales and Related Occupations	27,591	28,470	879	3.2%
43	Office and Administrative Support Occupations	32,396	33,086	690	2.1%
45	Farming, Fishing, and Forestry Occupations	542	574	32	5.9%
47	Construction and Extraction Occupations	11,482	11,909	427	3.7%
49	Installation, Maintenance, and Repair Occupations	12,163	12,976	812	6.7%
51	Production Occupations	17,267	18,068	801	4.6%
53	Transportation and Material Moving Occupations	52,396	57,102	4,706	9.0%
55	Military-only occupations	747	757	10	1.4%
Total		288,306	305,671	17,365	6.0%

Figure 9: Employment Projections – Change by 2-Digit NAICS Code and JJC District Zip Codes (2023-2027)

Projected Number Growth > or = to 3,000 Employees (2023-2027)



Projected Number Growth 1,000 – 2,999 Employees (2023-2027)



Projected Number Growth < or = to 1,000 Employees (2023-2027)



Growing Industry Sector within 7 County Region (2023-2027)

The following table summarizes the 2-digit Industry categories projected to experience significant growth (greater than or equal to 3,000 jobs) from the previous county analysis expanded by the 3-digit SOC sector for the JJC seven county region.

Table 5: Employment Projections expanded by 3-Digit SOC for Overall 2-Digit NAICS with # Change Greater Than or Equal to 3,000 Employees within 7 County Region (2023-2027)

3-Digit SOC	Description	2023 Jobs	2027 Jobs	# Change	% Change
53-1000	Supervisors of Transportation and Material Moving Workers	4,213	4,484	271	6.4%
53-2000	Air Transportation Workers	521	563	42	8.1%
53-3000	Motor Vehicle Operators	39,630	42,467	2,837	7.2%
53-4000	Rail Transportation Workers	1,544	1,592	48	3.1%
53-5000	Water Transportation Workers	544	612	69	12.7%
53-6000	Other Transportation Workers	1,447	1,575	128	8.9%
53-7000	Material Moving Workers	86,409	91,005	4,597	5.3%
Subtotal		134,307	142,299	7,992	6.0%
35-1000	Supervisors of Food Preparation and Serving Workers	7,616	8,230	614	8.1%
35-2000	Cooks and Food Preparation Workers	21,449	22,767	1,318	6.1%
35-3000	Food and Beverage Serving Workers	34,372	36,758	2,386	6.9%
35-9000	Other Food Preparation and Serving Related Workers	5,835	6,206	371	6.4%
Subtotal		69,272	73,961	4,689	6.8%
31-1100	Home Health and Personal Care Aides; and Nursing Assistants, Orderlies, and Psychiatric Aides	25,331	28,427	3,096	12.2%
31-2000	Occupational Therapy and Physical Therapist Assistants and Aides	2,084	2,369	285	13.7%
31-9000	Other Healthcare Support Occupations	10,177	10,819	642	6.3%
Subtotal		37,592	41,614	4,023	10.7%
29-1000	Healthcare Diagnosing or Treating Practitioners	37,196	39,357	2,160	5.8%
29-2000	Health Technologists and Technicians	19,507	20,446	939	4.8%
29-9000	Other Healthcare Practitioners and Technical Occupations	677	709	32	4.7%
Subtotal		57,381	60,512	3,132	5.5%
Overall Total		298,552	318,387	19,835	6.6%

Growing Industry Sector for JJC District Zip Codes (2023-2027)

The following table summarizes the 2-digit Industry categories projected to experience significant growth (greater than or equal to 1,000 jobs) from the previous zip code analysis expanded by the 3-digit SOC sector for the JJC zip codes that make up the district.

Table 6: Employment Projections expanded by 3-Digit SOC for Overall 2-Digit NAICS with # Change Greater Than or Equal to 1,000 Employees within JJC District Zip Codes (2023-2027)

3-Digit SOC	Description	2023 Jobs	2027 Jobs	# Change	% Change
11-1000	Top Executives	7,534	7,983	450	6.0%
11-2000	Advertising, Marketing, Promotions, Public Relations, and Sales Managers	2,337	2,445	107	4.6%
11-3000	Operations Specialties Managers	4,632	4,913	282	6.1%
11-9000	Other Management Occupations	5,297	5,704	407	7.7%
Subtotal		19,799	21,045	1,246	6.3%
25-1000	Postsecondary Teachers	1,397	1,489	92	6.6%
25-2000	Preschool, Elementary, Middle, Secondary, and Special Education Teachers	10,163	10,769	-606	-6.0%
25-3000	Other Teachers and Instructors	2,127	2,301	173	8.2%
25-4000	Librarians, Curators, and Archivists	461	472	10	2.3%
25-9000	Other Educational Instruction and Library Occupations	3,555	3,766	210	5.9%
Subtotal		17,703	18,796	1,093	6.2%
35-1000	Supervisors of Food Preparation and Serving Workers	2,589	2,853	264	10.2%
35-2000	Cooks and Food Preparation Workers	6,895	7,495	600	8.7%
35-3000	Food and Beverage Serving Workers	11,835	12,916	1,081	9.1%
35-9000	Other Food Preparation and Serving Related Workers	1,736	1,898	162	9.3%
Subtotal		23,056	25,162	2,107	9.1%
53-1000	Supervisors of Transportation and Material Moving Workers	1,654	1,823	168	10.2%
53-2000	Air Transportation Workers	151	162	11	7.3%
53-3000	Motor Vehicle Operators	14,736	16,233	1,497	10.2%
53-4000	Rail Transportation Workers	923	971	47	5.1%
53-5000	Water Transportation Workers	211	218	7	3.5%
53-6000	Other Transportation Workers	475	519	44	9.2%
53-7000	Material Moving Workers	34,245	37,176	2,931	8.6%
Subtotal		52,396	57,102	4,706	9.0%
Overall Total		112,954	122,105	9,152	8.1%

Occupational Analysis

Analyzing the top occupations in an area helps provide a better picture of a local community, including the types of work most individuals do as well as the skills required from the local labor force. The table below describes the top occupations and median hourly wages pulled from EMSI arranged by the 5-digit Standard Occupational Classification (SOC) code. The information reflects occupations with greater than or equal to 500 projected jobs between 2023-2027 for the seven-county area of Will, Grundy, Livingston, Kendall, DuPage, LaSalle, and Kankakee.

Table 7: Occupational Projections by SOC with # Change Greater Than or Equal to 500 Employees (2023-2027)

SOC	Description	2023 Jobs	2027 Jobs	# Change	% Change	Median Hourly Earnings
11-1021	General and Operations Managers	27,192	28,007	815	3.0%	\$47.19
15-1252	Software Developers	9,852	10,429	577	5.9%	\$47.54
29-1141	Registered Nurses	17,740	18,656	916	5.2%	\$36.50
31-1128	Home Health and Personal Care Aides	17,362	20,043	2,681	15.4%	\$15.86
35-1012	First-Line Supervisors of Food Preparation and Serving Workers	6,695	7,245	549	8.2%	\$15.89
35-2014	Cooks, Restaurant	6,908	7,906	997	14.4%	\$14.09
35-3023	Fast Food and Counter Workers	19,932	21,246	1,313	6.6%	\$11.67
35-3031	Waiters and Waitresses	9,835	10,380	545	5.5%	\$11.09
53-3032	Heavy and Tractor-Trailer Truck Drivers	18,251	19,651	1,400	7.7%	\$26.36
53-3033	Light Truck Drivers	11,927	12,651	725	6.1%	\$21.97
53-7051	Industrial Truck and Tractor Operators	9,153	9,846	694	7.6%	\$20.64
53-7062	Laborers and Freight, Stock, and Material Movers, Hand	44,855	47,298	2,443	5.4%	\$14.82
53-7065	Stockers and Order Fillers	19,480	20,288	807	4.1%	\$14.77

The following table describes the top occupations and median hourly wages pulled from EMSI arranged by the 5-digit Standard Occupational Classification (SOC) code. The information reflects occupations with greater than or equal to 250 projected jobs 2023-2027 for all JJC District Zip Codes.

Table 8: Occupational Projections by SOC Greater Than or Equal to 250 Employees (2023-2027)

SOC	Description	2023 Jobs	2027 Jobs	# Change	% Change	Median Hourly Earnings
11-1021	General and Operations Managers	27,192	28,007	815	3.0%	\$47.19
15-1252	Software Developers	9,852	10,429	577	5.9%	\$47.54
29-1141	Registered Nurses	17,740	18,656	916	5.2%	\$36.50
31-1128	Home Health and Personal Care Aides	17,362	20,043	2,681	15.4%	\$15.86
35-1012	First-Line Supervisors of Food Preparation and Serving Workers	6,695	7,245	549	8.2%	\$15.89
35-2014	Cooks, Restaurant	6,908	7,906	997	14.4%	\$14.09
35-3023	Fast Food and Counter Workers	19,932	21,246	1,313	6.6%	\$11.67
35-3031	Waiters and Waitresses	9,835	10,380	545	5.5%	\$11.09
53-3032	Heavy and Tractor-Trailer Truck Drivers	18,251	19,651	1,400	7.7%	\$26.36
53-3033	Light Truck Drivers	11,927	12,651	725	6.1%	\$21.97
53-7051	Industrial Truck and Tractor Operators	9,153	9,846	694	7.6%	\$20.64
53-7062	Laborers and Freight, Stock, and Material Movers, Hand	44,855	47,298	2,443	5.4%	\$14.82
53-7065	Stockers and Order Fillers	19,480	20,288	807	4.1%	\$14.77

Labor Force

The labor force participation rate represents the proportion of the population that is in the labor force. Labor force participation rate is sensitive to demographic change because the participation rates vary across age and gender categories. The participation rate below demonstrates the distribution of the labor force across different age groups by gender.

The current labor force for the JJC District is estimated to be 1,034,207 for the seven-county area of Will, Grundy, Livingston, Kendall, DuPage, LaSalle, and Kankakee. The figure below reflects the current labor force distribution participation rates by age category and race/ethnicity.

Figure 10: Labor Force Participation Rate by Age Category

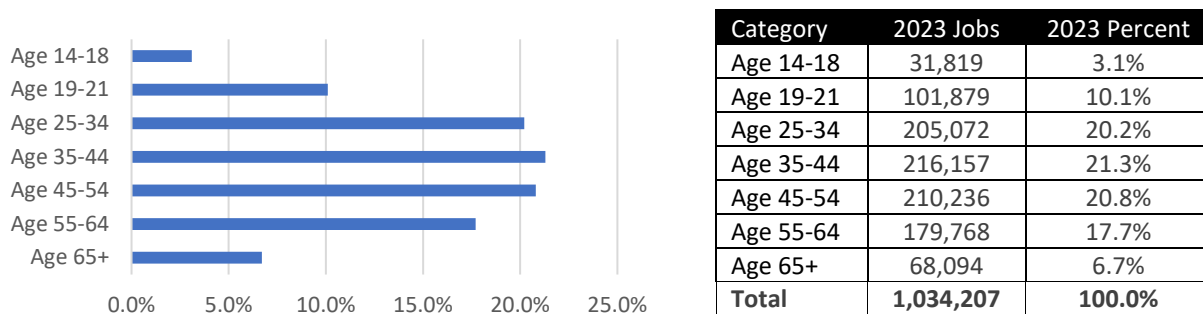


Figure 11: Labor Force Participation Rate by Gender

